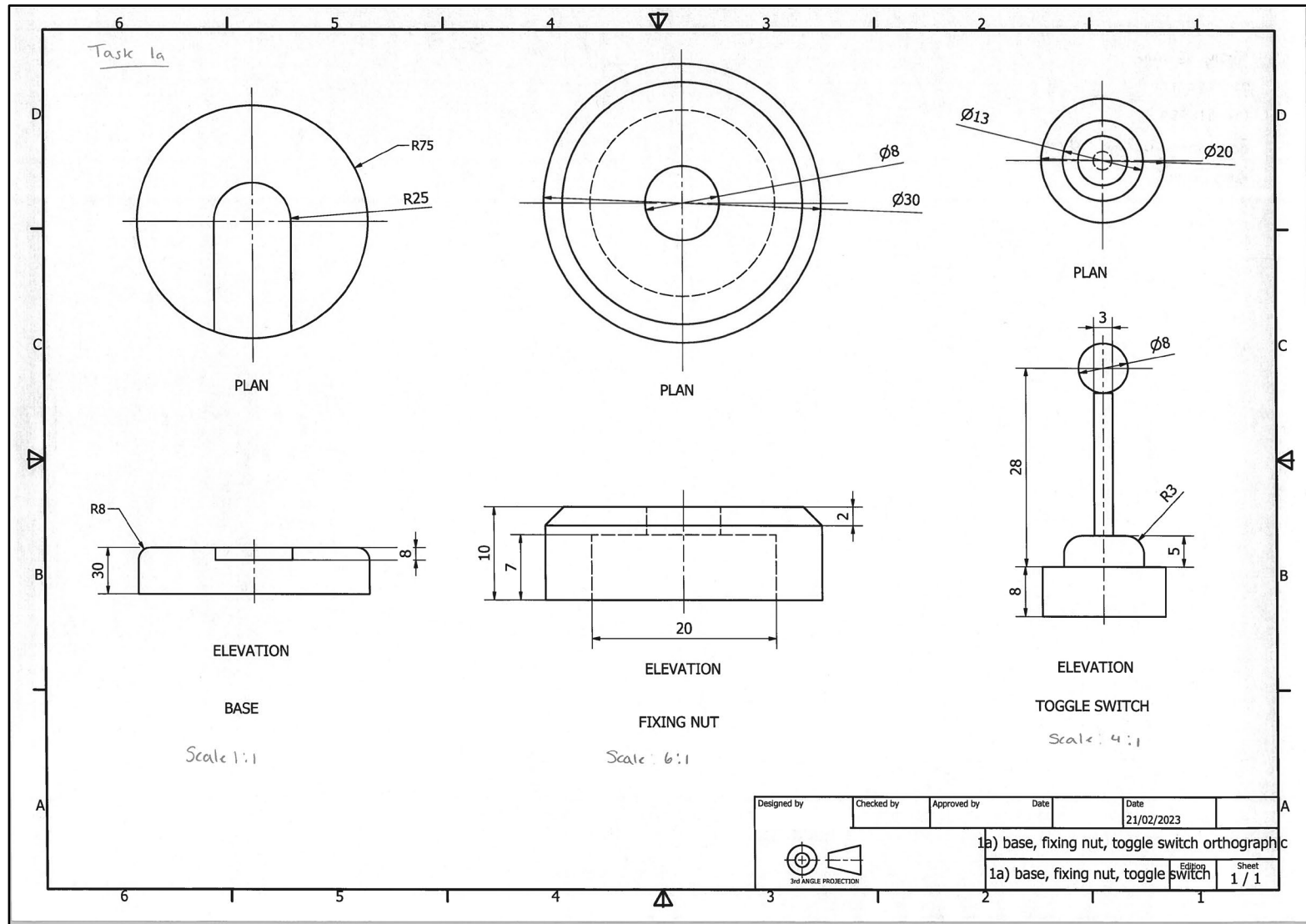
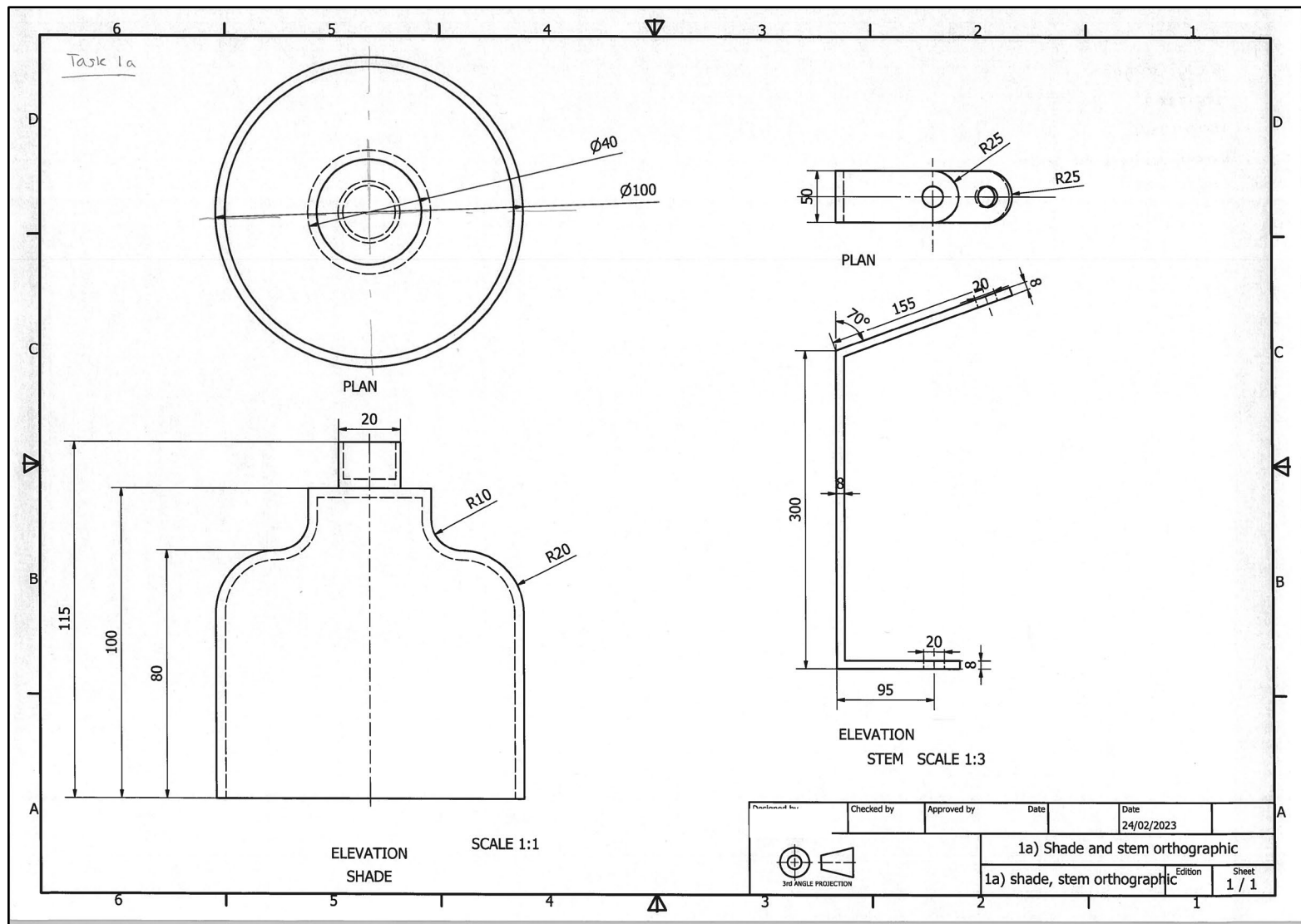
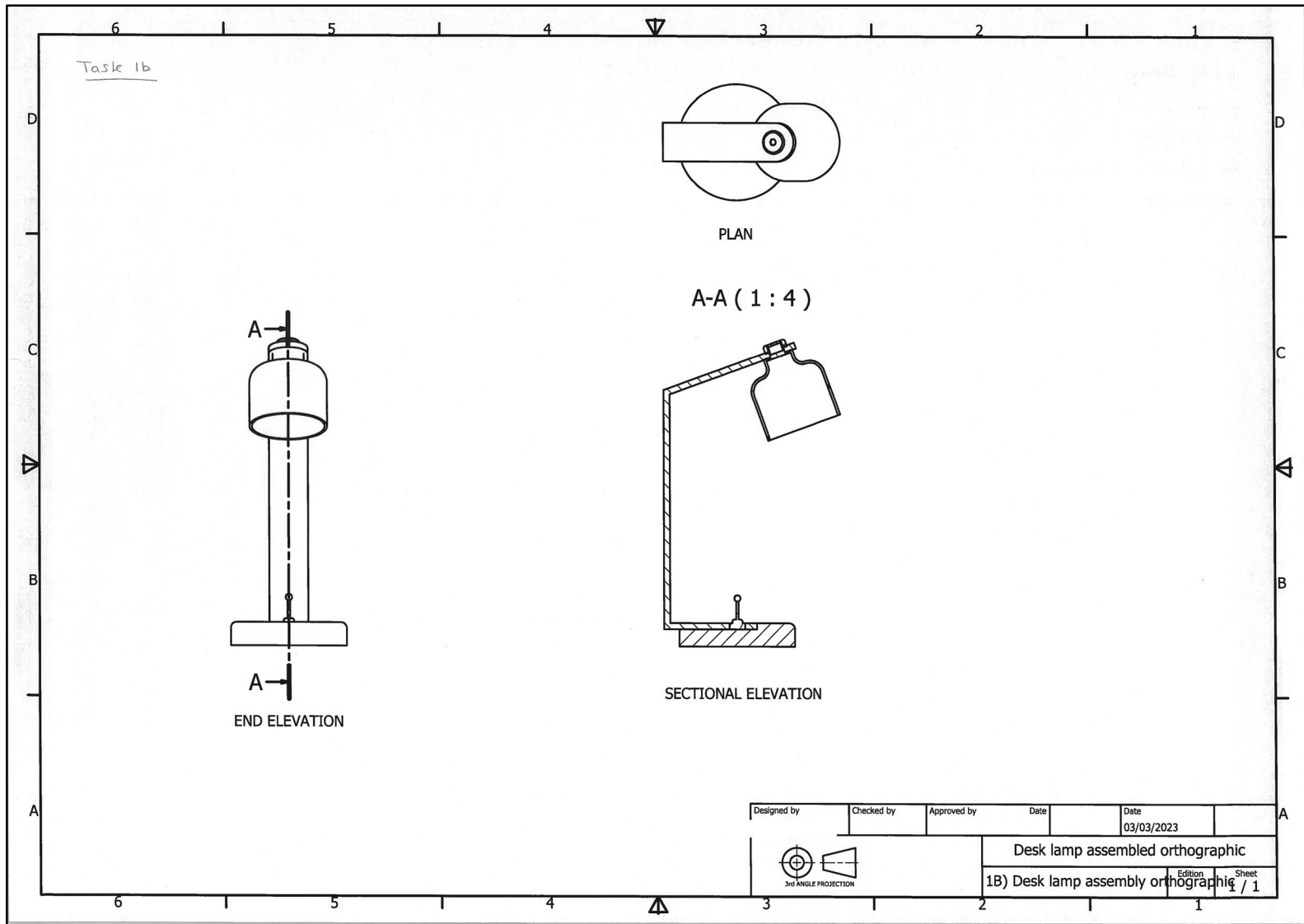
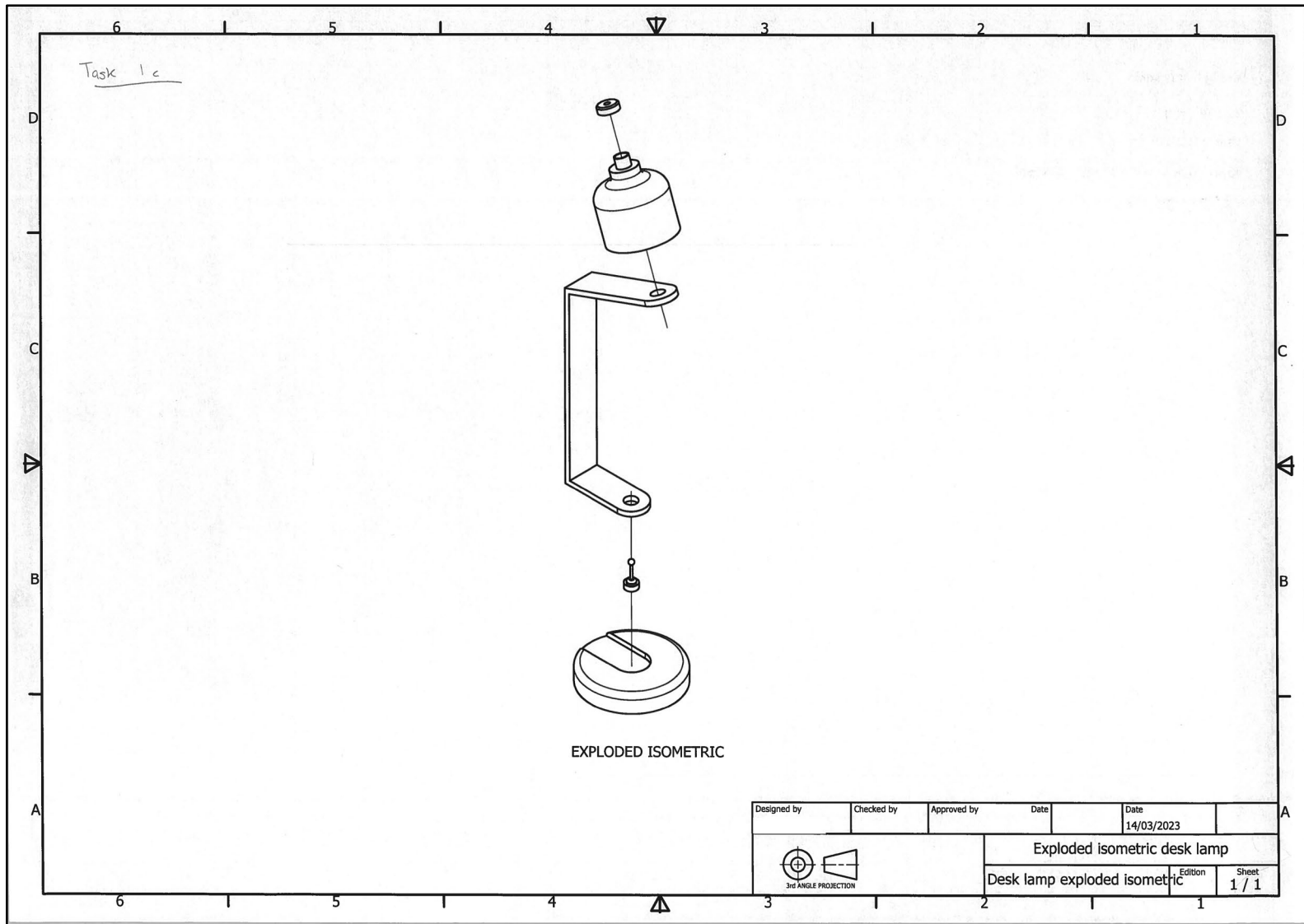


Candidate 1 evidence









Task 2a



Task 2b

Depth is created by scaling up the size of the desk lamp to make it bigger and more noticeable, making it stand out from the rest of the poster.

LUMO DESK LAMP

Light up your life with the amazing Lumo desk lamp!
☆☆☆☆☆

DOMINANCE is created by using an underline, this emphasizes the name of the product making it clear what the product is.

line is used to lead your eye across the layout, making it flow more and make it easier on the eye.

A radial balance is used surrounding the lamp in the center making it stand out that it's the main focal point, making it reason the eye.

White space is created by leaving a gap in the poster and not overfilling it. This makes it easier on the eye, and makes the main images/text stand out.

Depth is created by the layering of images, drawing the viewer's eye straight to the lamp making it very eye-catching and stand out as the main product on the poster.

LUMO DESK LAMP

Task 3c

Task 2c

The use of **contrast** makes the poster very eye catching and makes it stand out. This is created by the use of light and dark colours, which therefore create a contrast making parts of the poster very prominent, leading to a great visual impact.

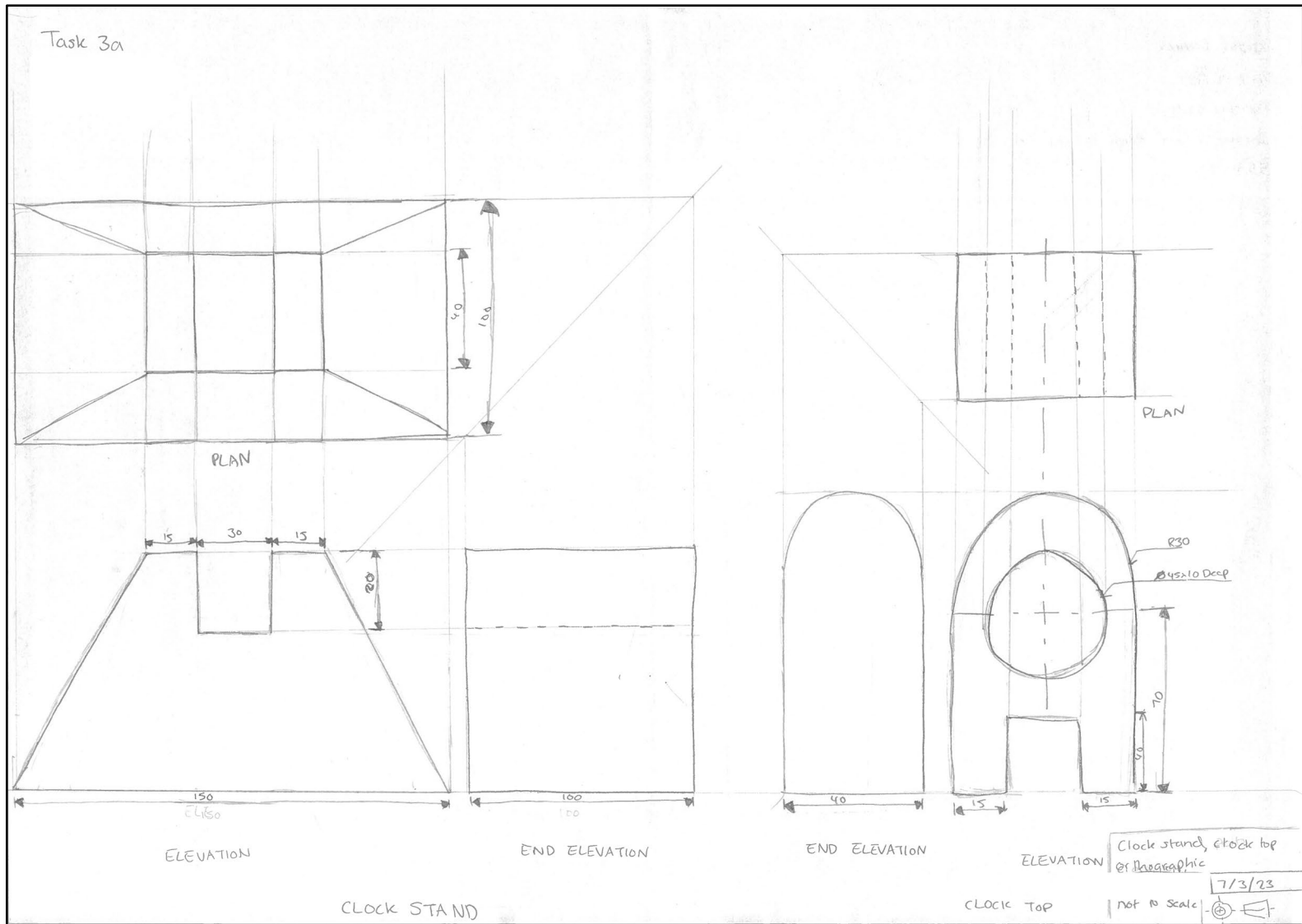
Unity is created by the use of a simplified colour pallet. The only colours used are yellow and blue this helps to help connect the poster together and make it look more aesthetically pleasing., drawing your eye to the lamp at the centre, making it stand out.

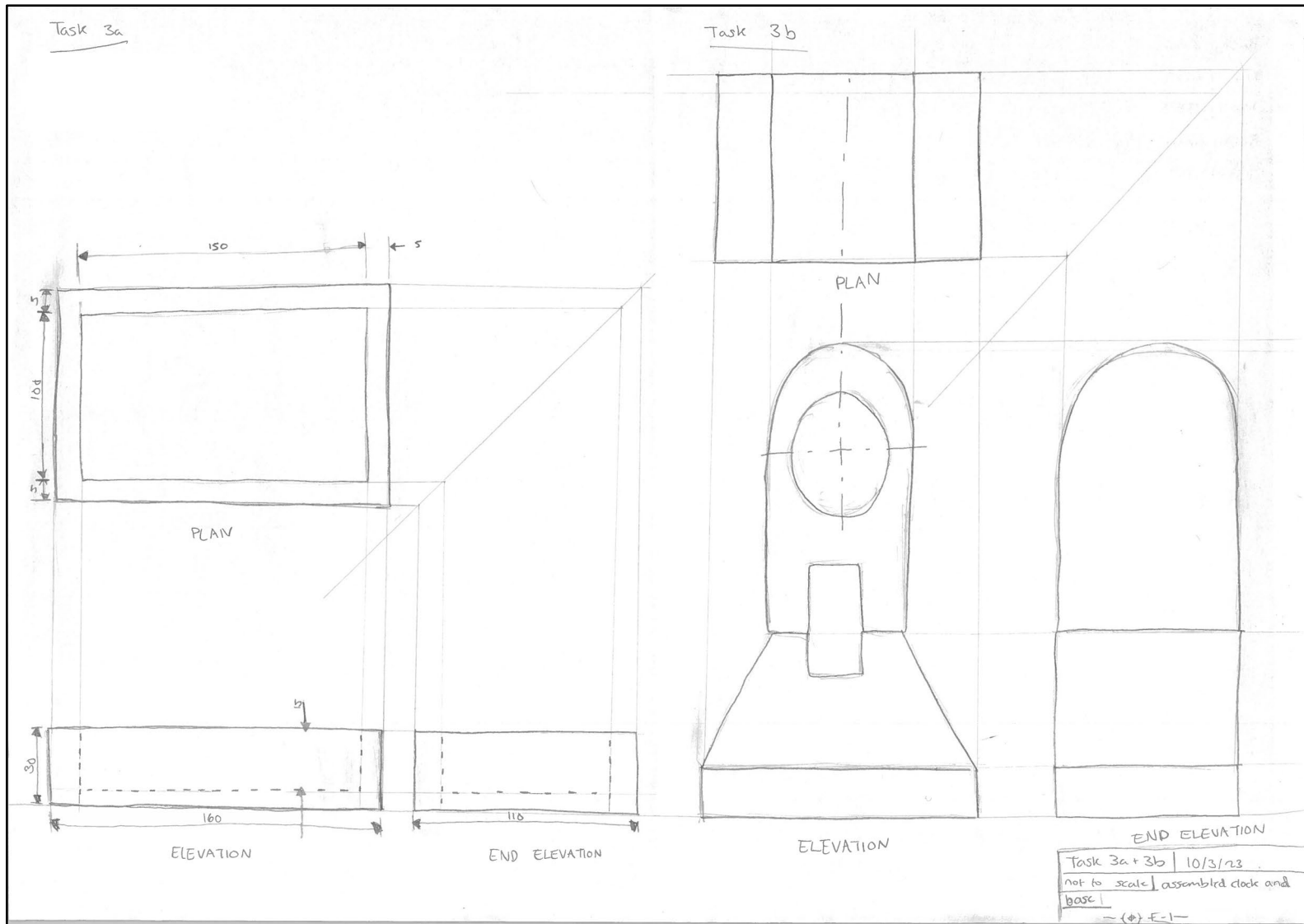
Packaging panel dimensions: 340mm x 170mm



Depth is created by the use of layering shapes. By having the desk lamp layered on top of the yellow oval and on top of the background it creates depth and helps to draw the eye to the lamp and make it the main focus of the poster.

Repetition is created as the shape of rectangles with a white outline is repeated. This gives the poster a visual impact and creates depth too. The repetition helps to connect the poster up and easily lead the eye through it.





Candidate 2 evidence

Desk Lamp

Base

Plan

Elevation

Shade

Plan

Elevation

Stem

Plan

Elevation

Fixing nut

Plan

Elevation

Toggle switch

Plan

Elevation

1 a.

Drawing Title	Desk Lamp	
Course	National 5 Graphic Communication	
Scale	1 / 2	
Drawn By		

ALL SIZES IN MM

23, 2c

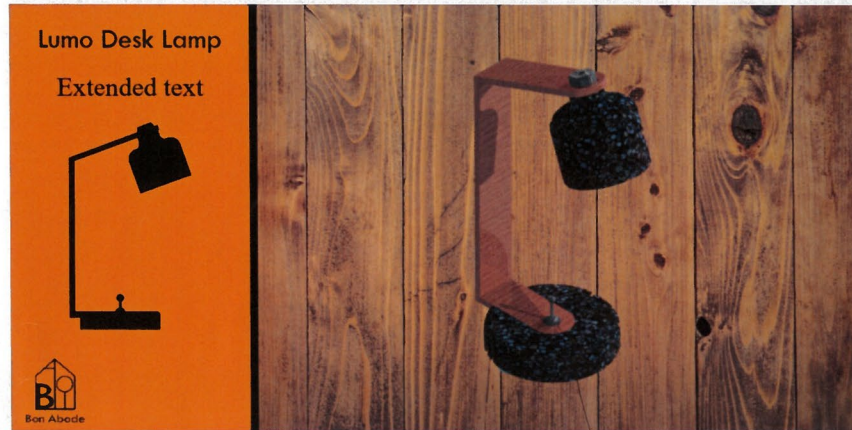
Assembled Desk Lamp

The drawing consists of four views of a desk lamp:

- Plan:** A top-down view showing a circular base with a central hole and a horizontal arm extending to the left. Section lines 'A-A' are shown at both ends of the arm.
- SECTION B-B:** A cross-sectional view of the lamp's neck and base, showing the internal structure and the mounting point of the lamp head.
- End Elevation:** A side view of the lamp showing the cylindrical base, a long vertical neck, and a rounded lamp head.
- Exploded Isometric:** An isometric view showing the lamp's components separated to show their assembly relationship. The components include the base, neck, lamp head, and a rectangular mounting plate.

Drawing Title	Desk Lamp		
Course	National 5 Graphic Communication		
Scale	1 / 4		ALL SIZES IN MM
Drawn By	_____		

2b.



Large image of Lamp on top of background creates depth

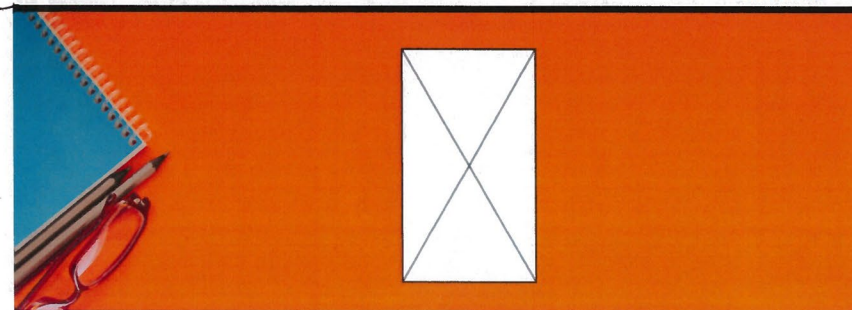
separating with depth
~~*white background and black background*~~

Lumo desk lamp

Extended Text here



orange background and black line separating white and orange background creates depth



20.

Size and drop shadow of lamp creates dominance. This grabs the readers attention onto the lamp
grabs the readers attention towards the product

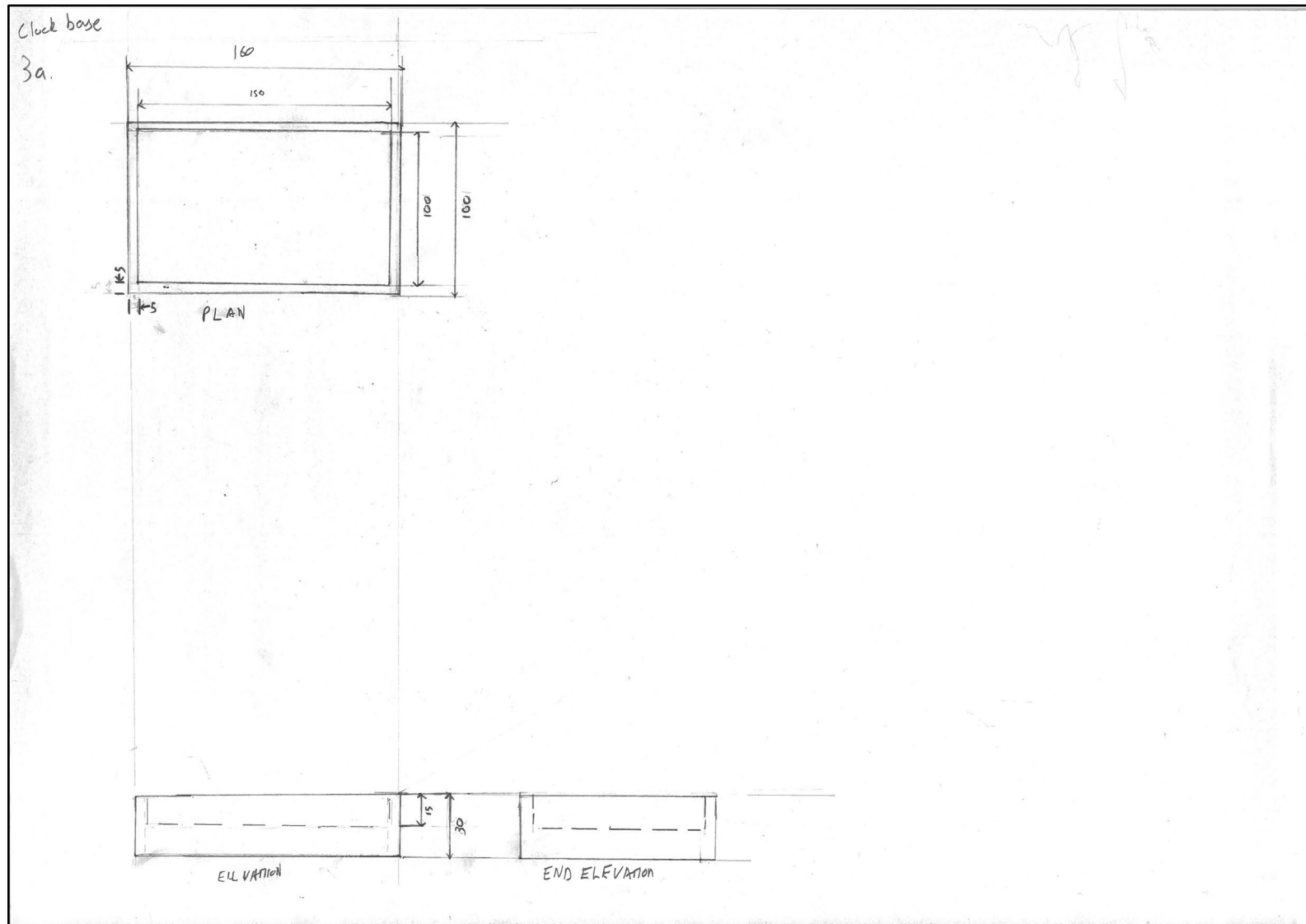
Centre alignment with Logo and black lamp creates structure and makes the page look neater

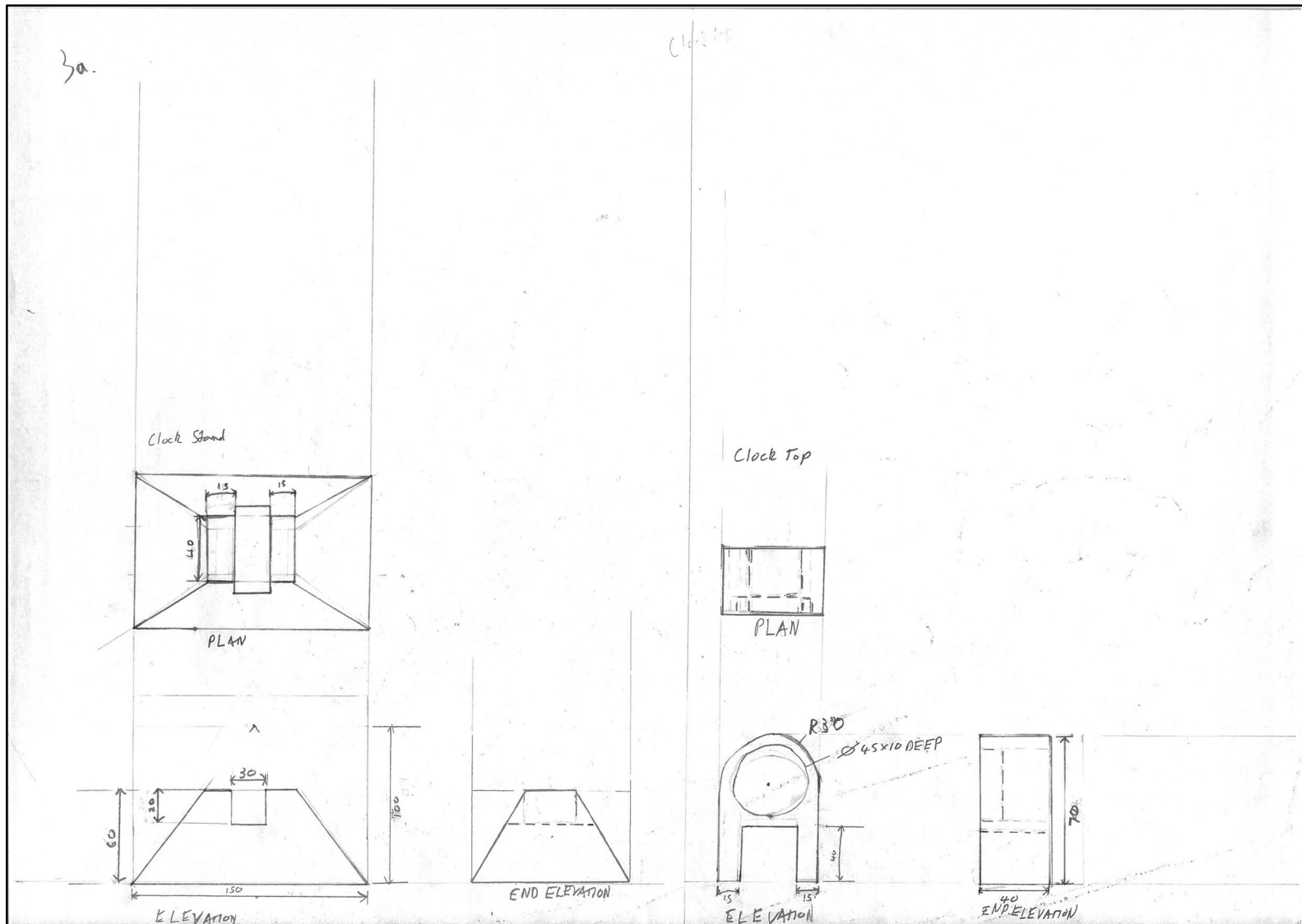
Bon Abode

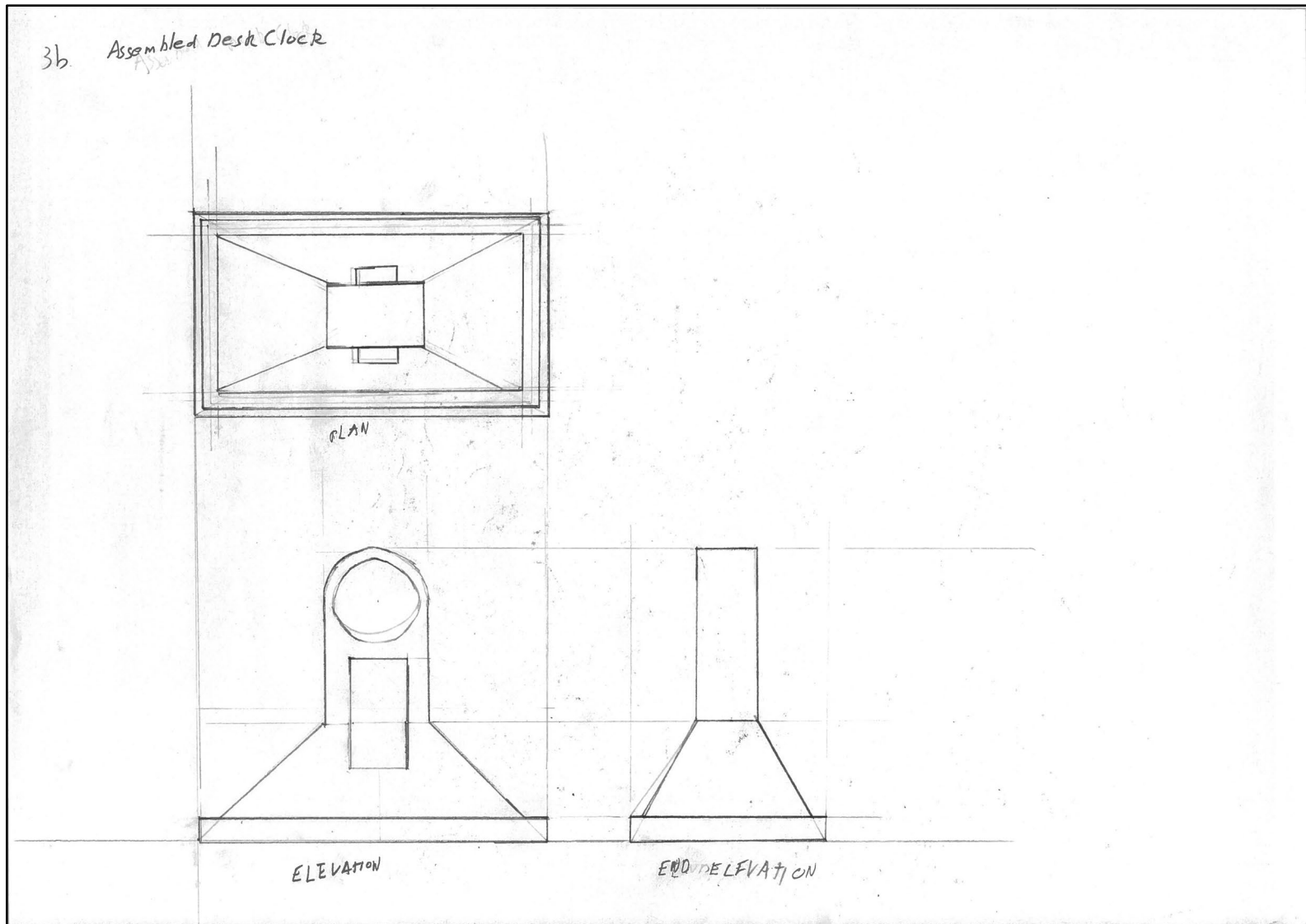
Black on logo, lamp and line creates contrast. Makes it stand out. The line divides the main section (lamp) with text. Title and additional text at the bottom of the page.

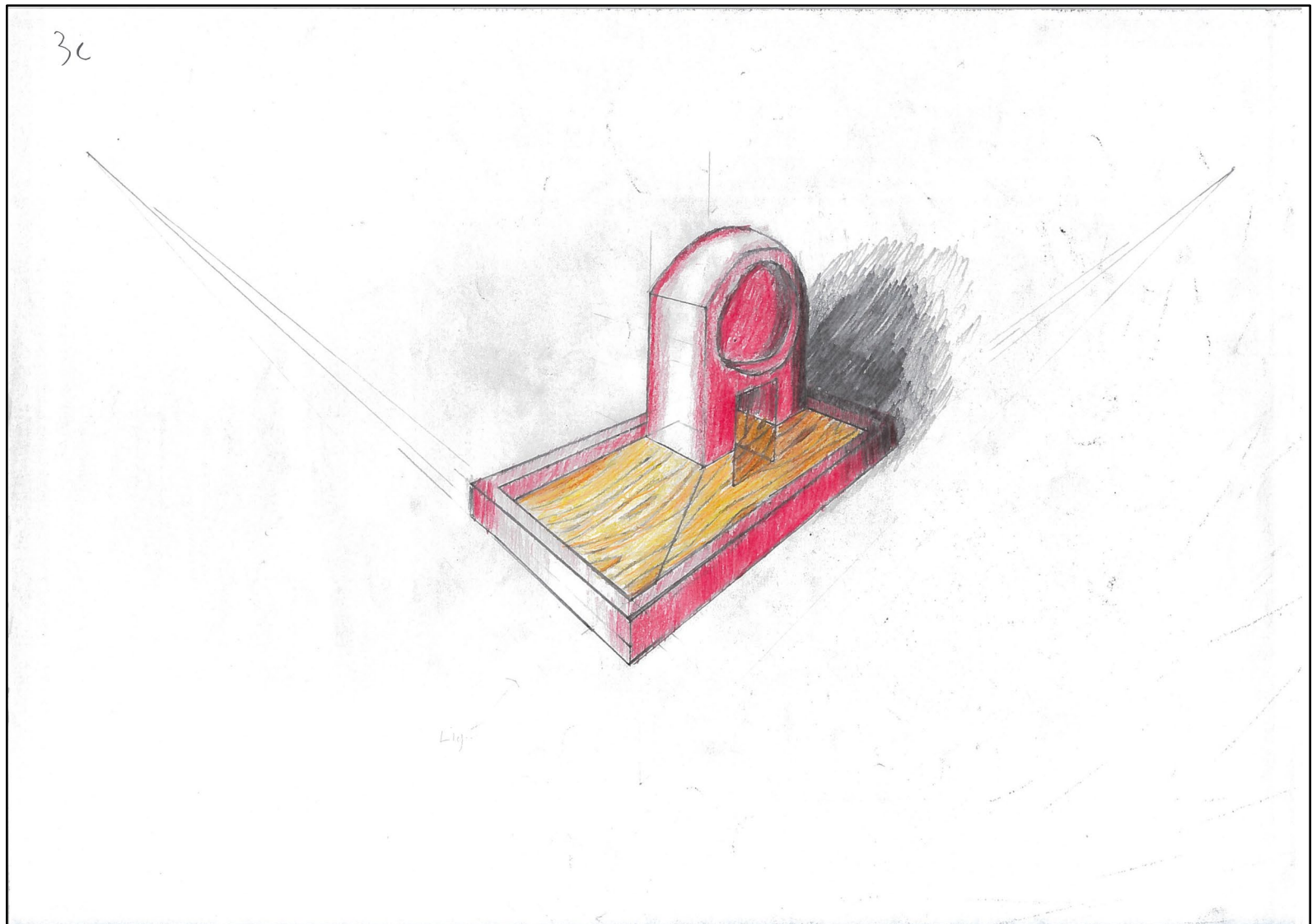
Lumo desk lamp
- Energy Efficient Bulb

CE









Candidate 3 evidence

<p>BASE 1:4</p> <p>PICTORIAL VIEW</p> <p>PLAN</p> <p>ELEVATION</p>	<p>FIXING NUT 1:1</p> <p>PLAN</p> <p>PICTORIAL VIEW</p> <p>ELEVATION</p>	<p>STEM 1:4</p> <p>PLAN</p> <p>ELEVATION</p> <p>PICTORIAL VIEW</p>		
<p>BASE 1:2</p> <p>PICTORIAL VIEW</p> <p>PLAN</p> <p>ELEVATION</p>	<p>TOGGLE SWITCH 1:1</p> <p>PLAN</p> <p>PICTORIAL VIEW</p> <p>ELEVATION</p>	<p>STEM 1:4</p> <p>PLAN</p> <p>ELEVATION</p> <p>PICTORIAL VIEW</p>		
<p>School:</p> <p>Pupil Name:</p>	<p>Course: Graphic Communication</p> <p>Level Study: National 5</p>	<p>Project Title: Course Assessment</p> <p>Drawing Title: Lamp Parts</p>	<p>Date: 02.03.23</p> <p>Sheet No: 1 of 2</p>	<p>Scale: as noted</p>

PLAN

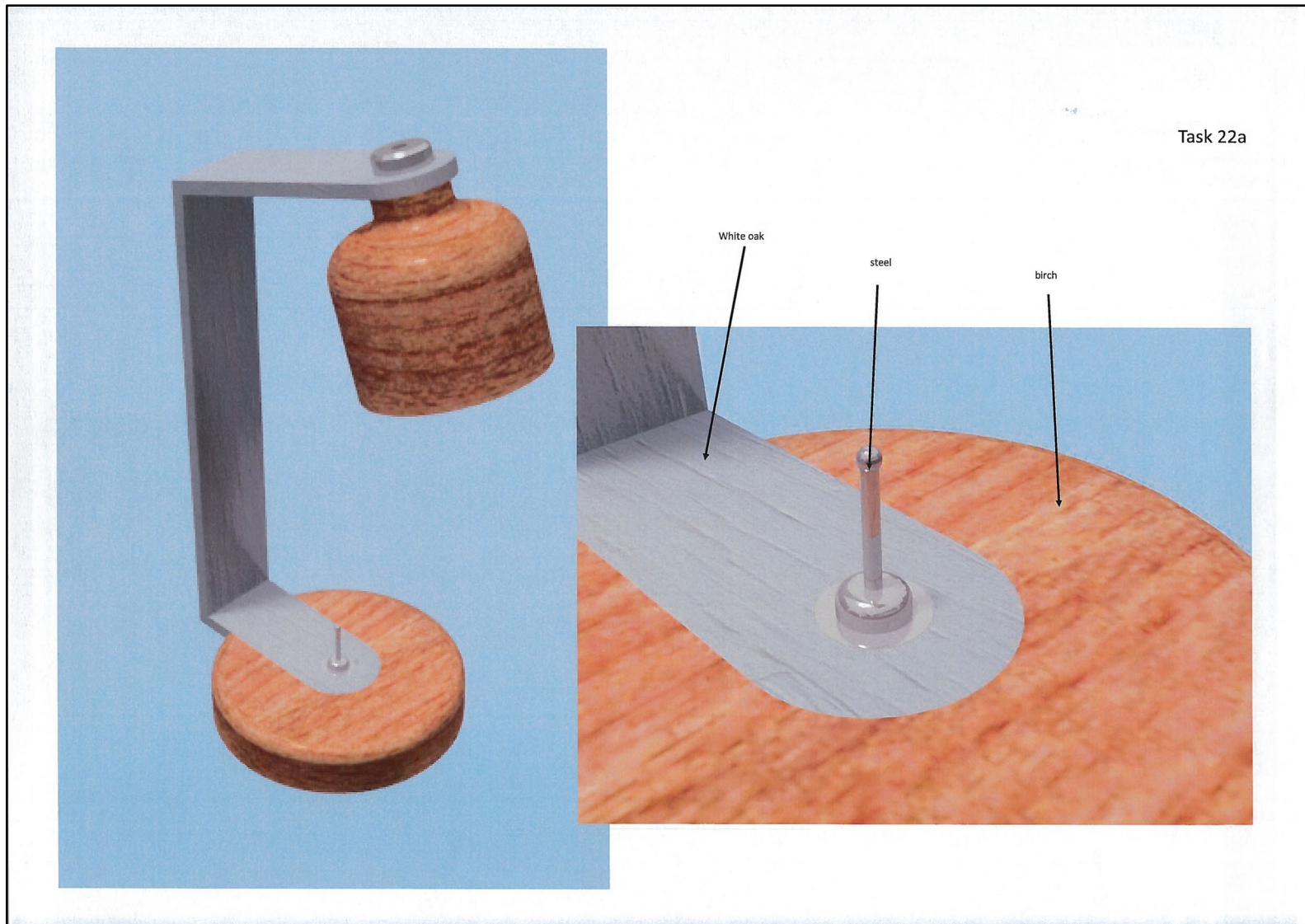
END ELEVATION

SECTIONAL ELEVATION

END ELEVATION

EXPLODED PICTORIAL VIEW

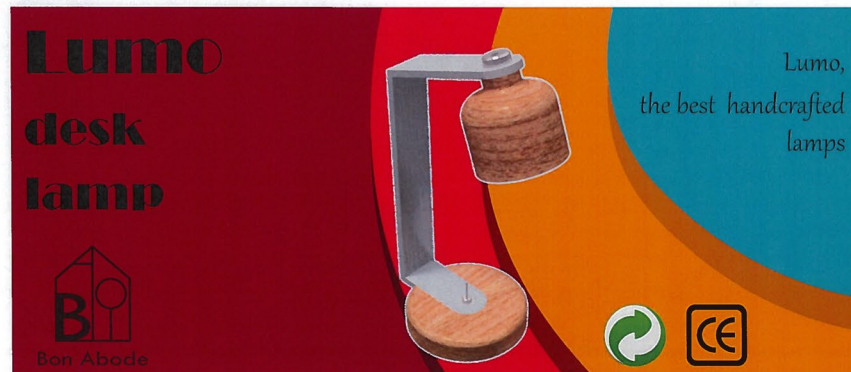
School:	Course: Graphic Communication	Project Title: Course Assessment	Date: 02.03.23	Scale: 1:4	
Pupil Name:	Level Study: National 5	Drawing Title: Assembled Lamp & Exploded View	Sheet No: 1 of 2		



Task 2b



Depth where lamp overlaps grey shapes.

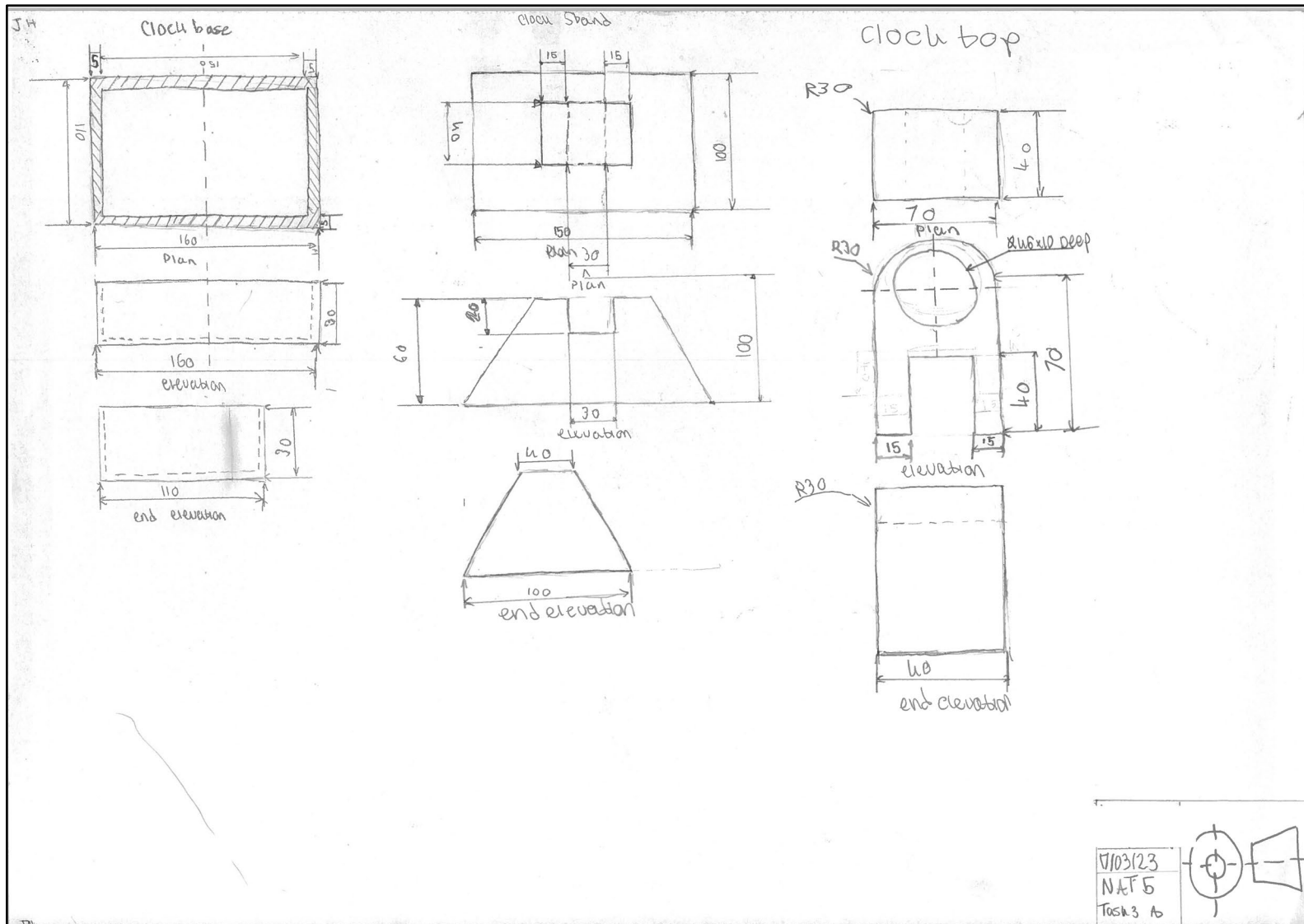


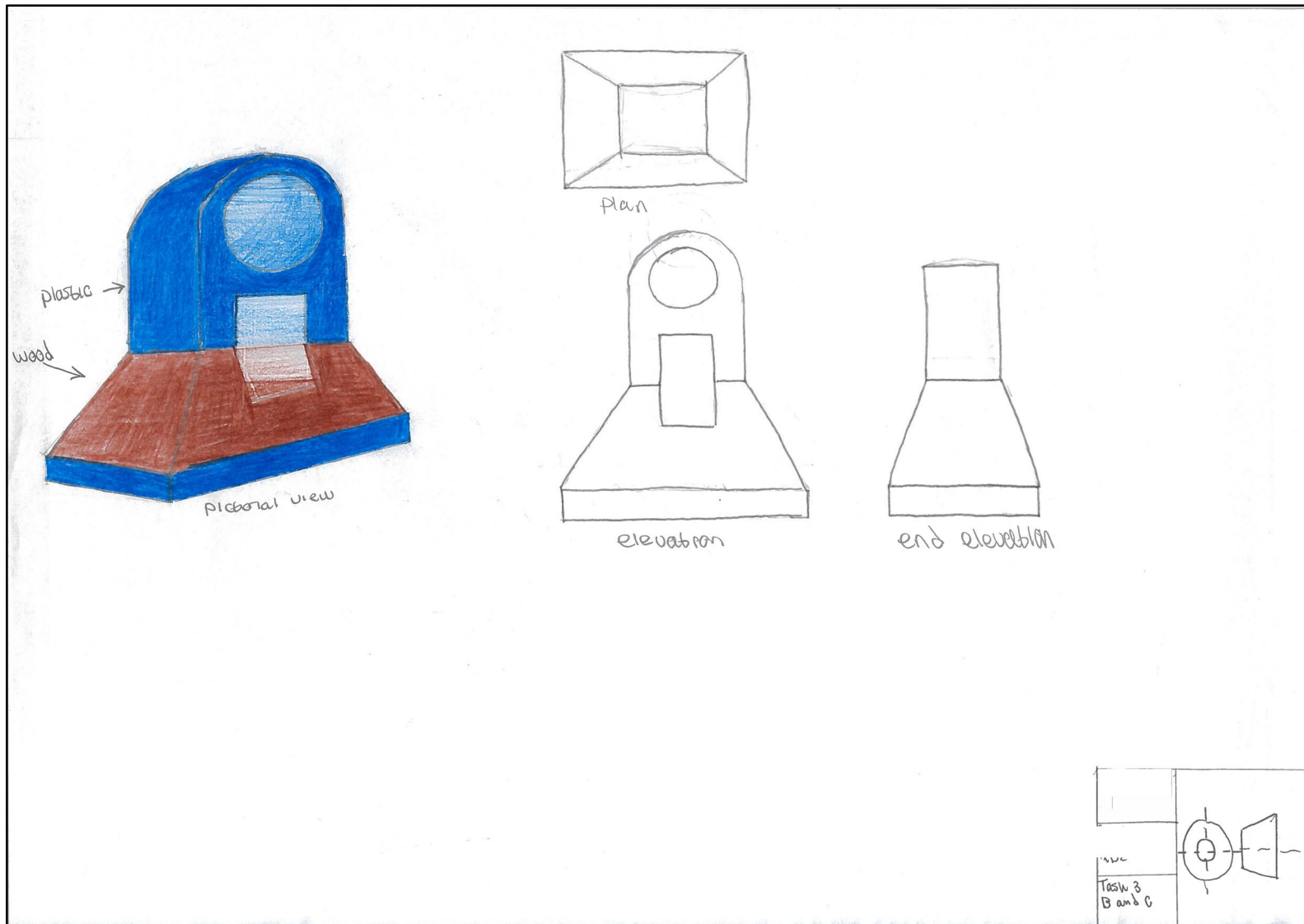
Depth where lamp overlaps colour background curves.

Task 2c



Depth with lamp overlaps grey shapes. **Alignment** of text to the right and logos horizontally. **Dominant** large lamp image. **Contrast** of big outline text and smaller reverse text. **White space** left for eye to rest. **Texture** of wood image to reflect wooden lamp.



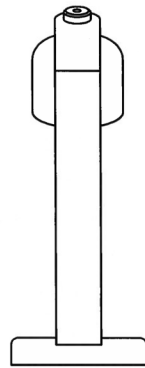
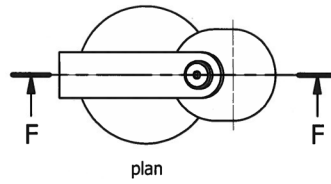


Candidate 4 evidence

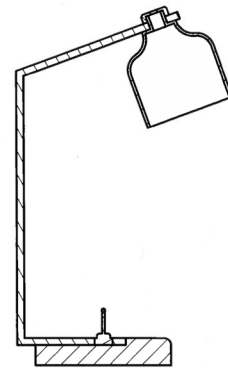
<p>desk lamp - 1A</p>	<p>The Shade</p> <p>plan (3mm wall thickness) elevation</p>	<p>(scale 2:1) Toggle Switch</p> <p>plan elevation</p>
<p>The stem.</p> <p>plan elevation</p>	<p>The Base</p> <p>plan elevation</p>	<p>(scale 1:1) The fixing nut</p> <p>plan elevation</p>
<p>Author -</p>	<p>Date - 09/02/2023</p>	
<p>Scale - 1 : 4</p>	<p>Drawing no. - 1/8</p>	

1B and 1C

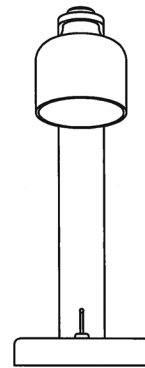
assembled desk lamp



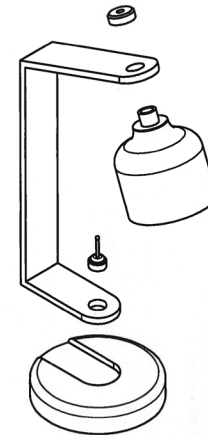
sectional end elevation



elevation



sectional end elevation



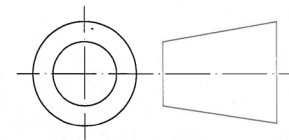
exploded isometric view

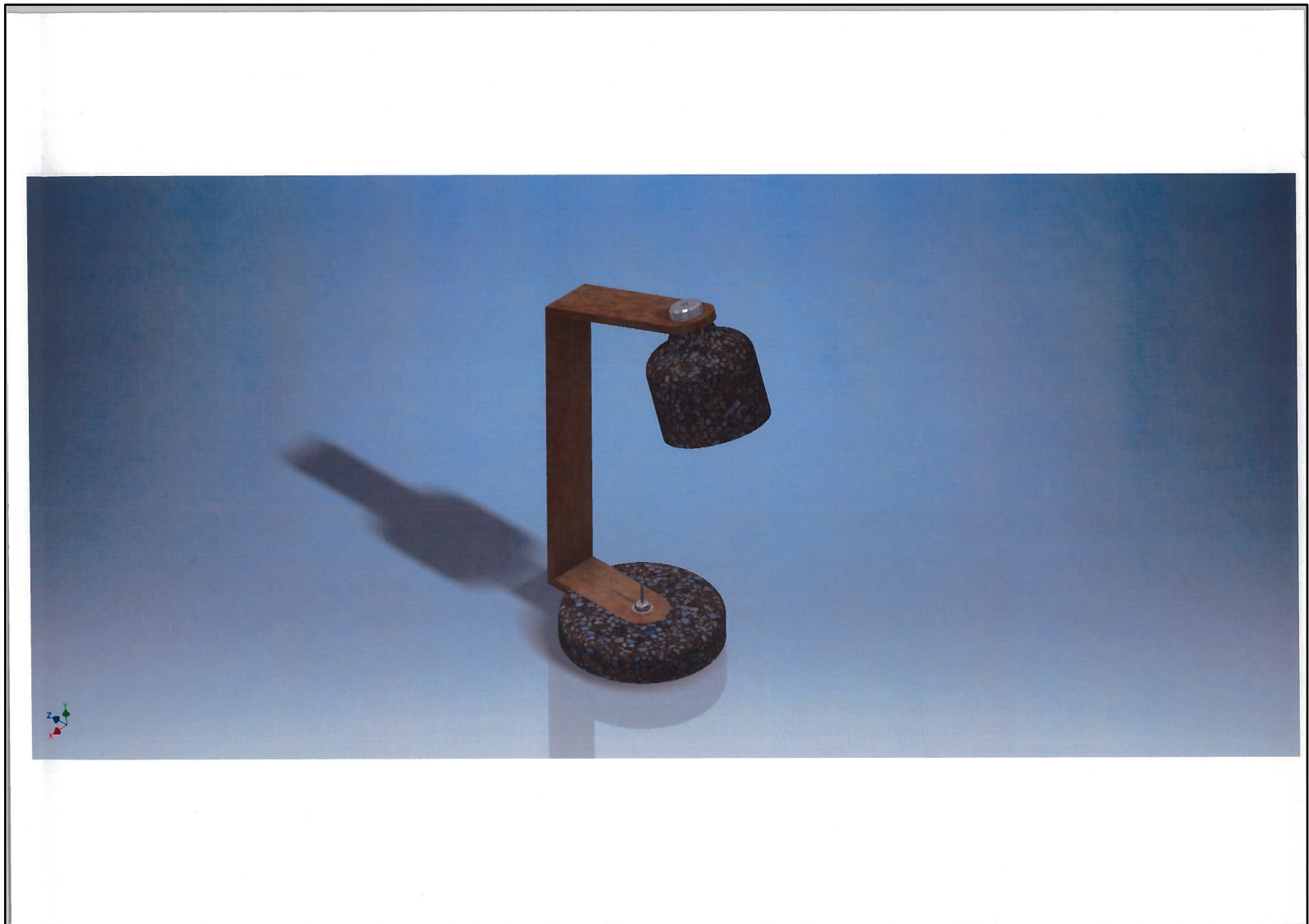
Author -

Date- 15/02/2023

Scale - 1 : 4

Drawing no. - 2/8







Depth is created by the layering of the lamp and the wood pattern

Bleed is created as the wood pattern has gone off the page

Alliance is created as the company logo is aligned with The safety warning on the left of the thumbnail.



Depth it created with the logo being layered on top of the Lamp.

Dominance is used by the lamp being black of a wood Background, this makes it stand out.

A plain layout had been created as there isn't much Extra information and lots of blank space.

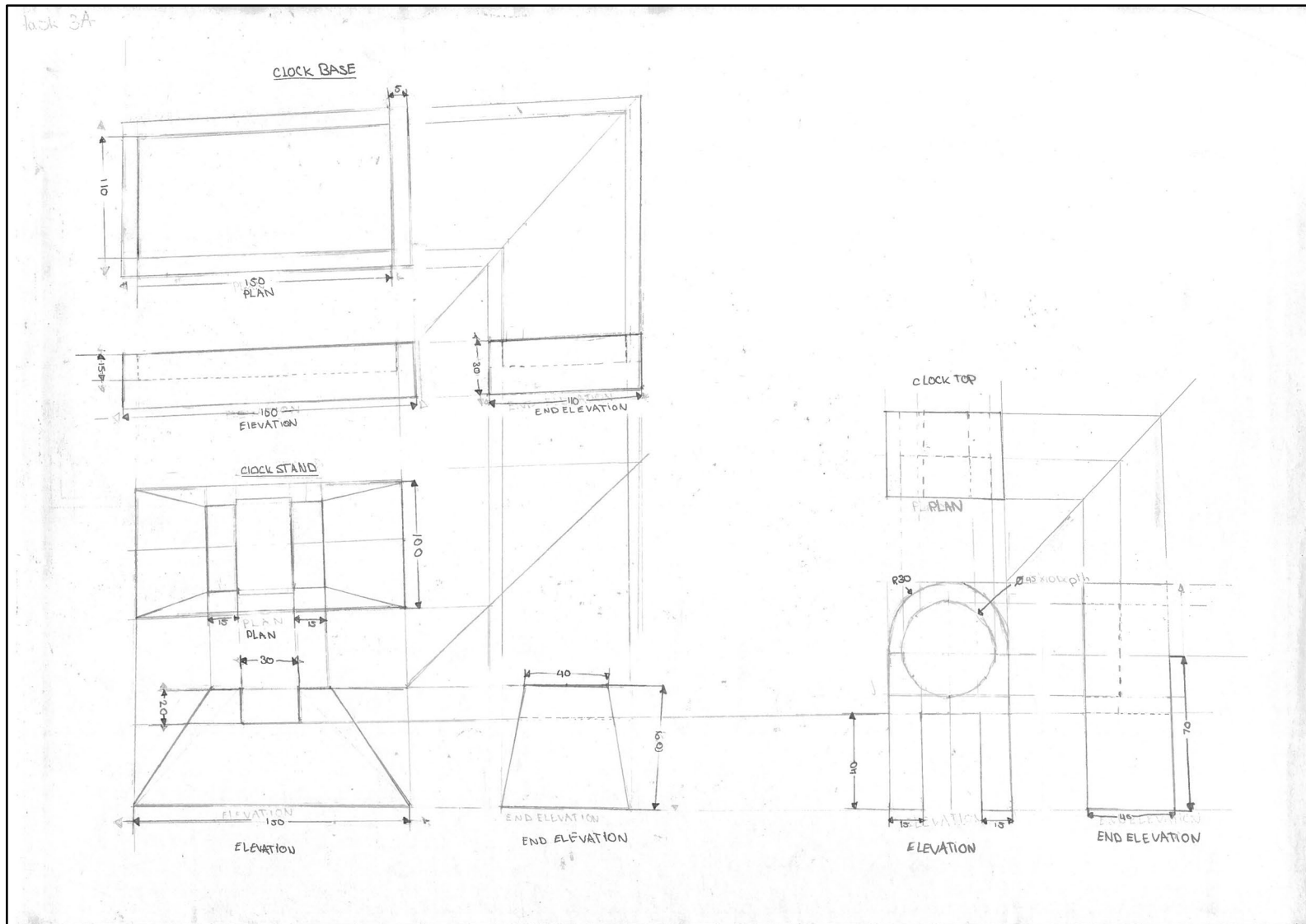
A asymetrical layout has been used here as it creates a more stylised look compaired to if it was a symetrical layout. The aysemetrical layout also allows for to see the importance for the lamp.

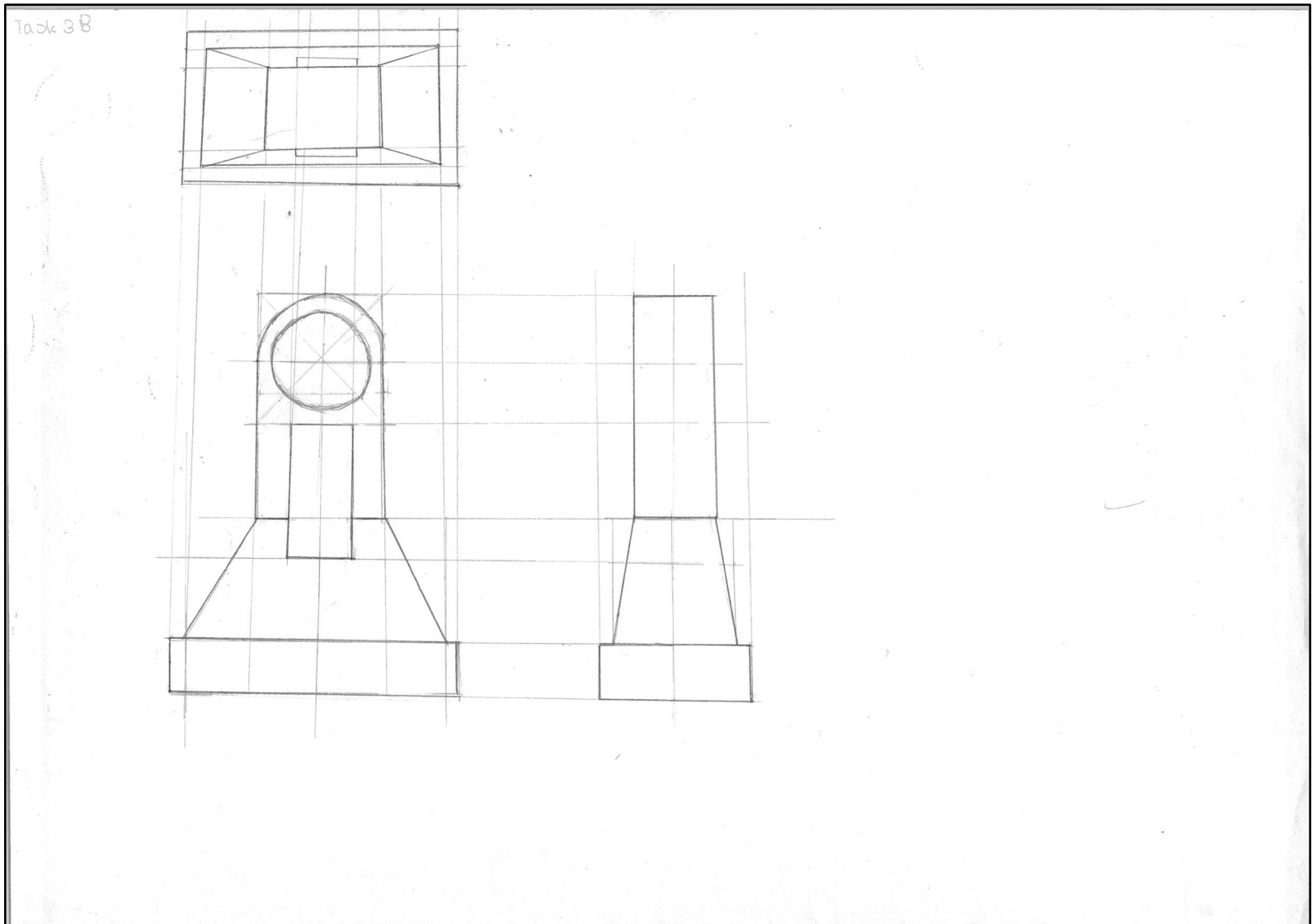
Blank space is created here as there into a lot of need for extra information and it gives it a more clean layout.

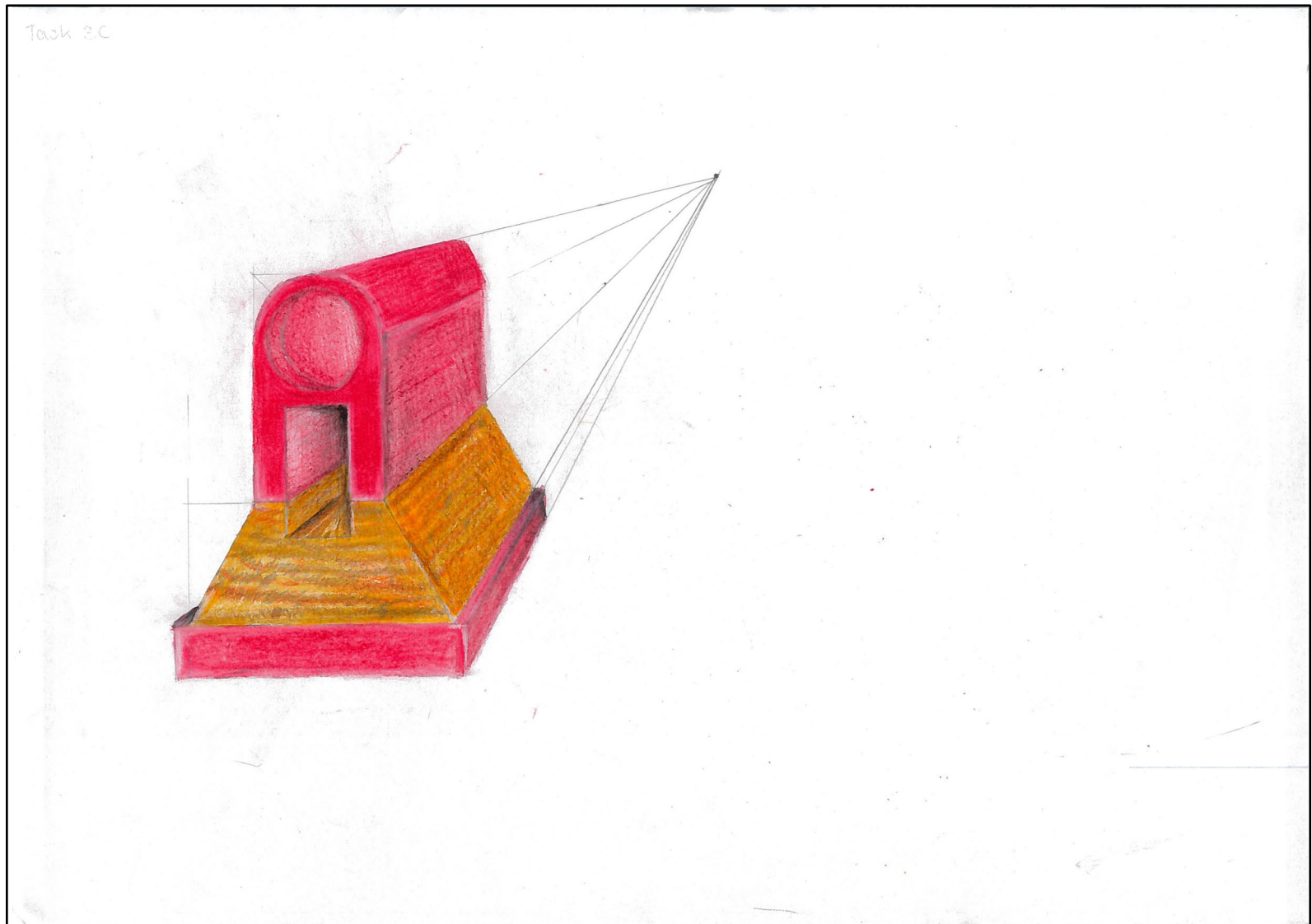


Deapth is created here as the lamp siloette is layered over the wood pattern. This adds visual impact and creates domanance to the the lamp siloette.

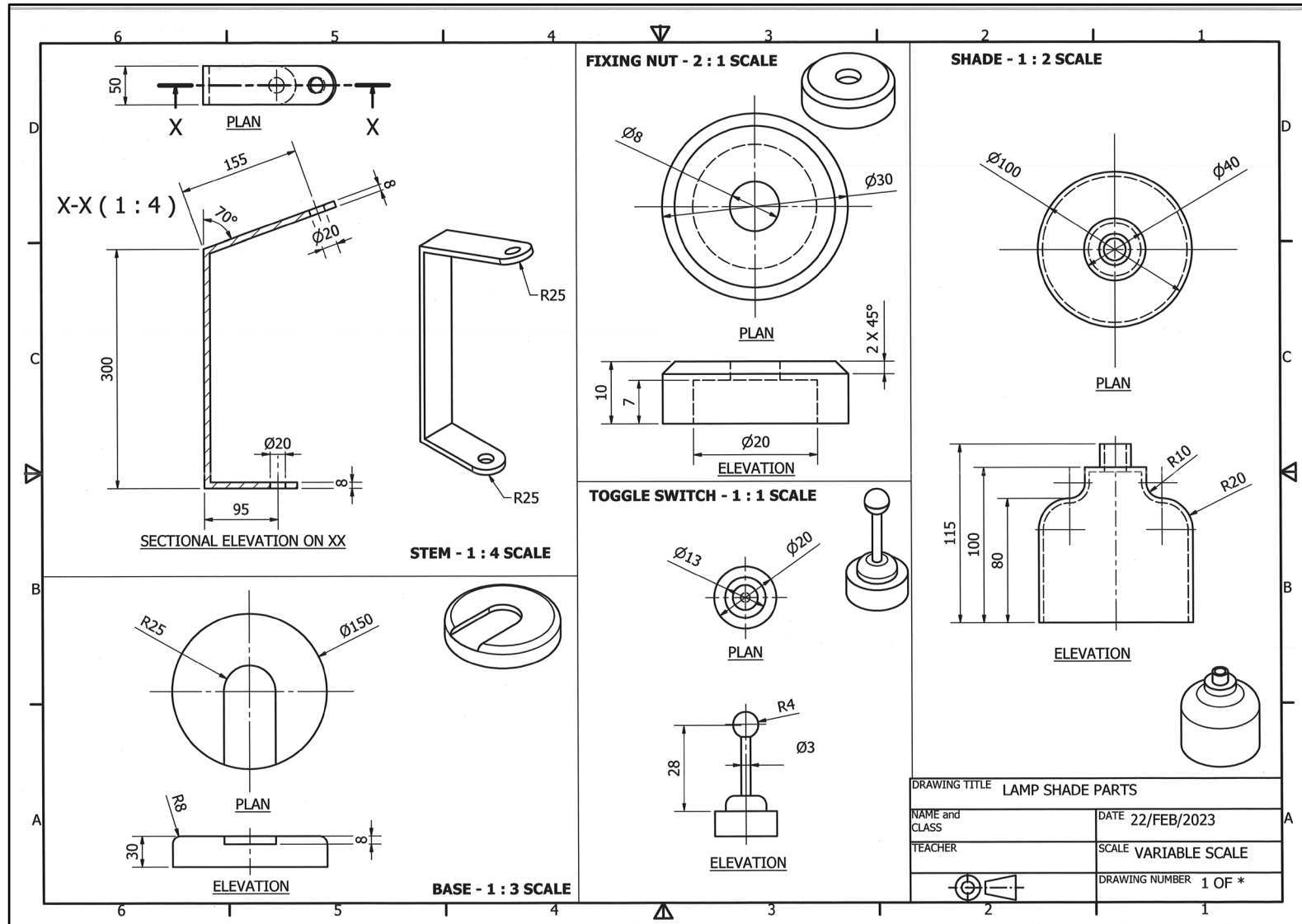
A drop shadow ls used at the brand name because it makes it look like it has been illuminated by the lamp. And the yellow colour of the brand name make is seem like the lamp has shined down on the brand

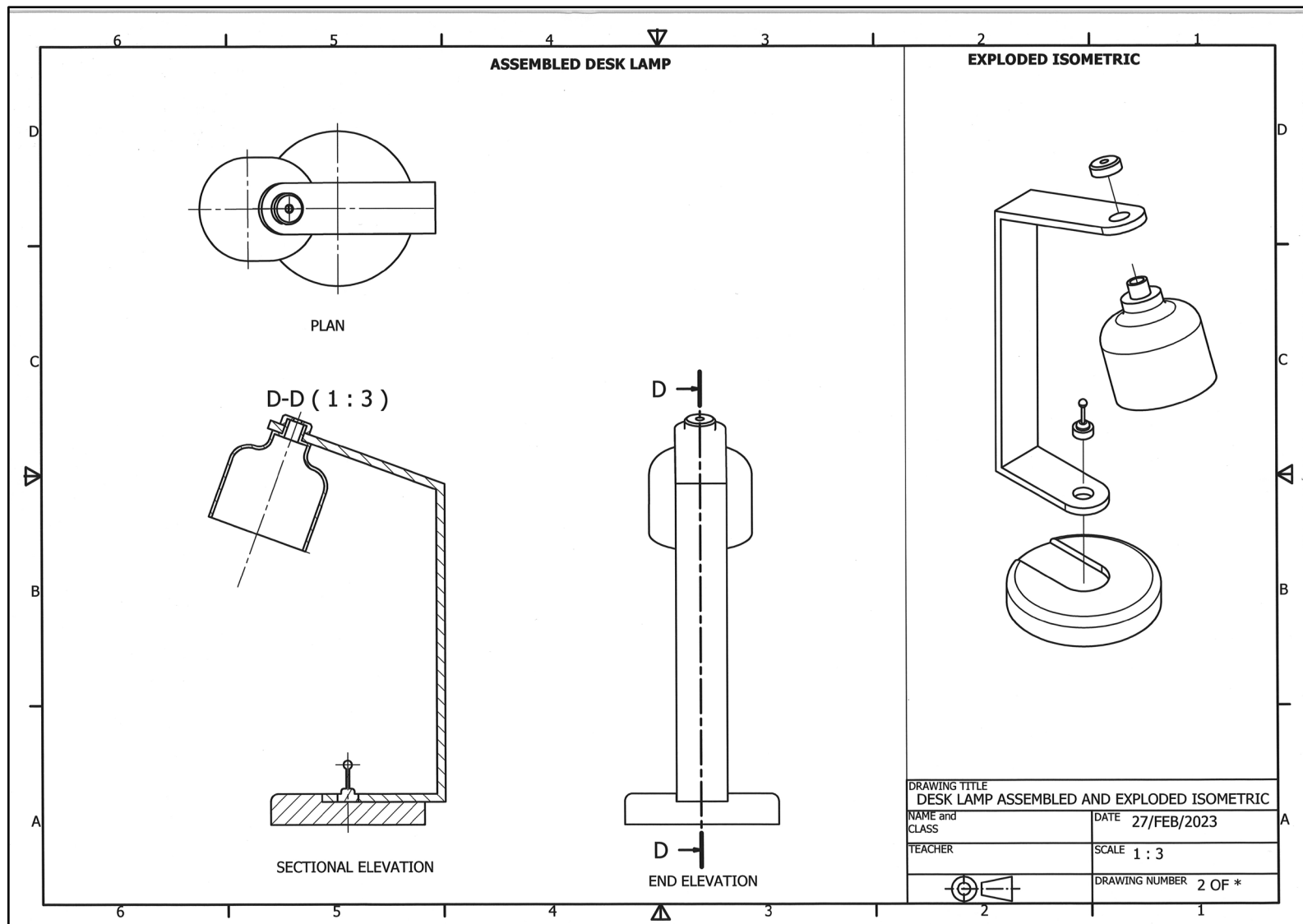




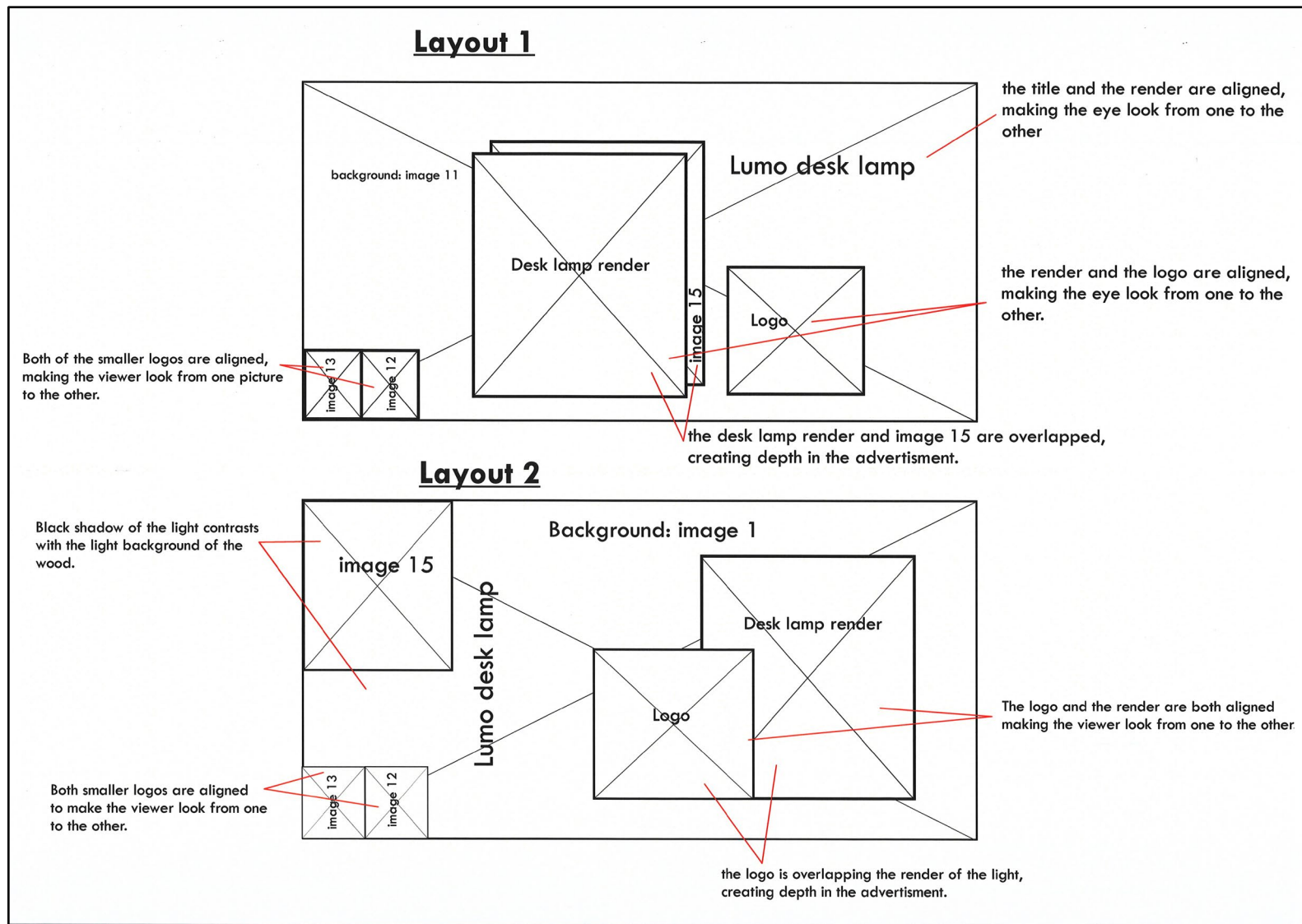


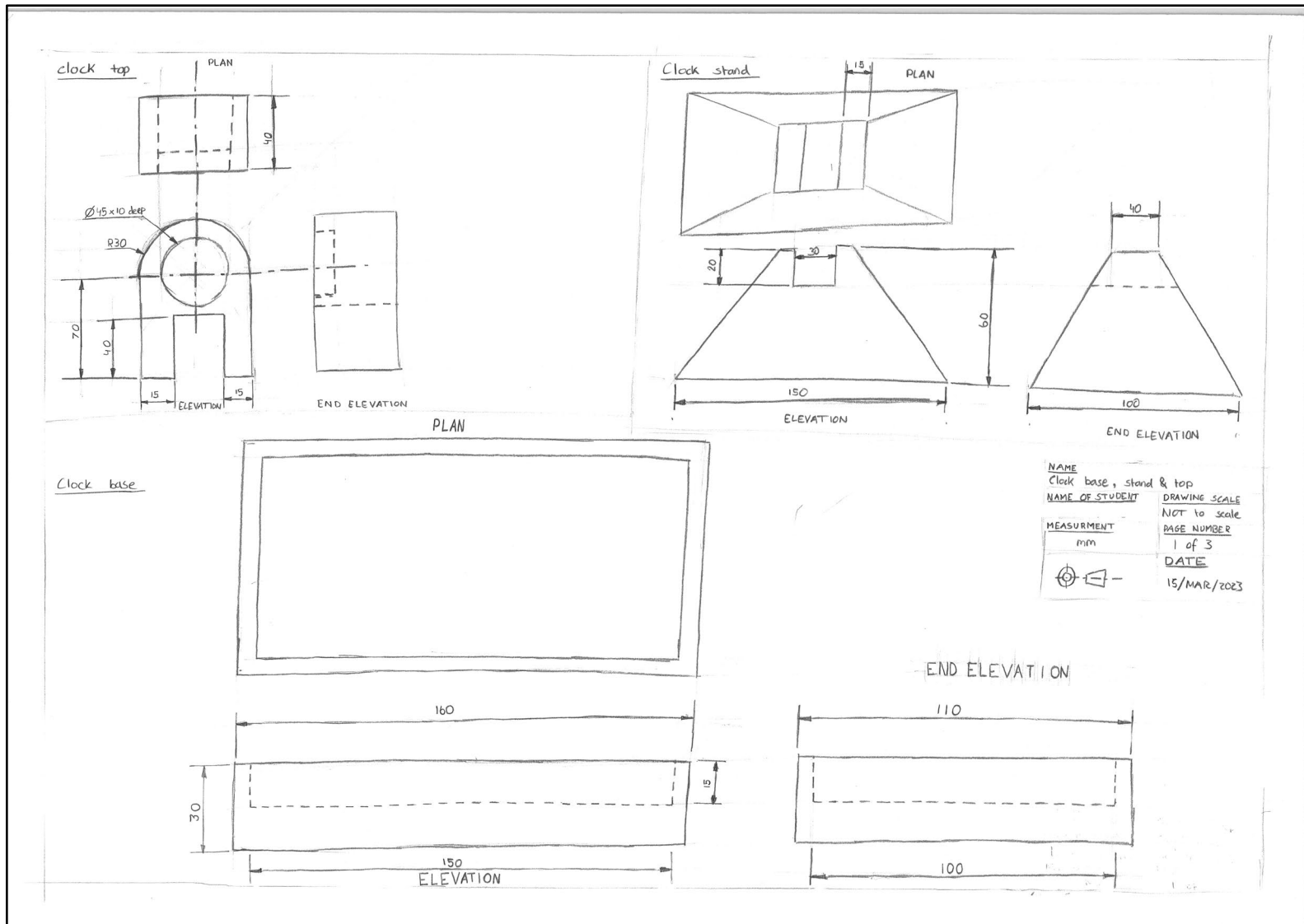
Candidate 5 evidence

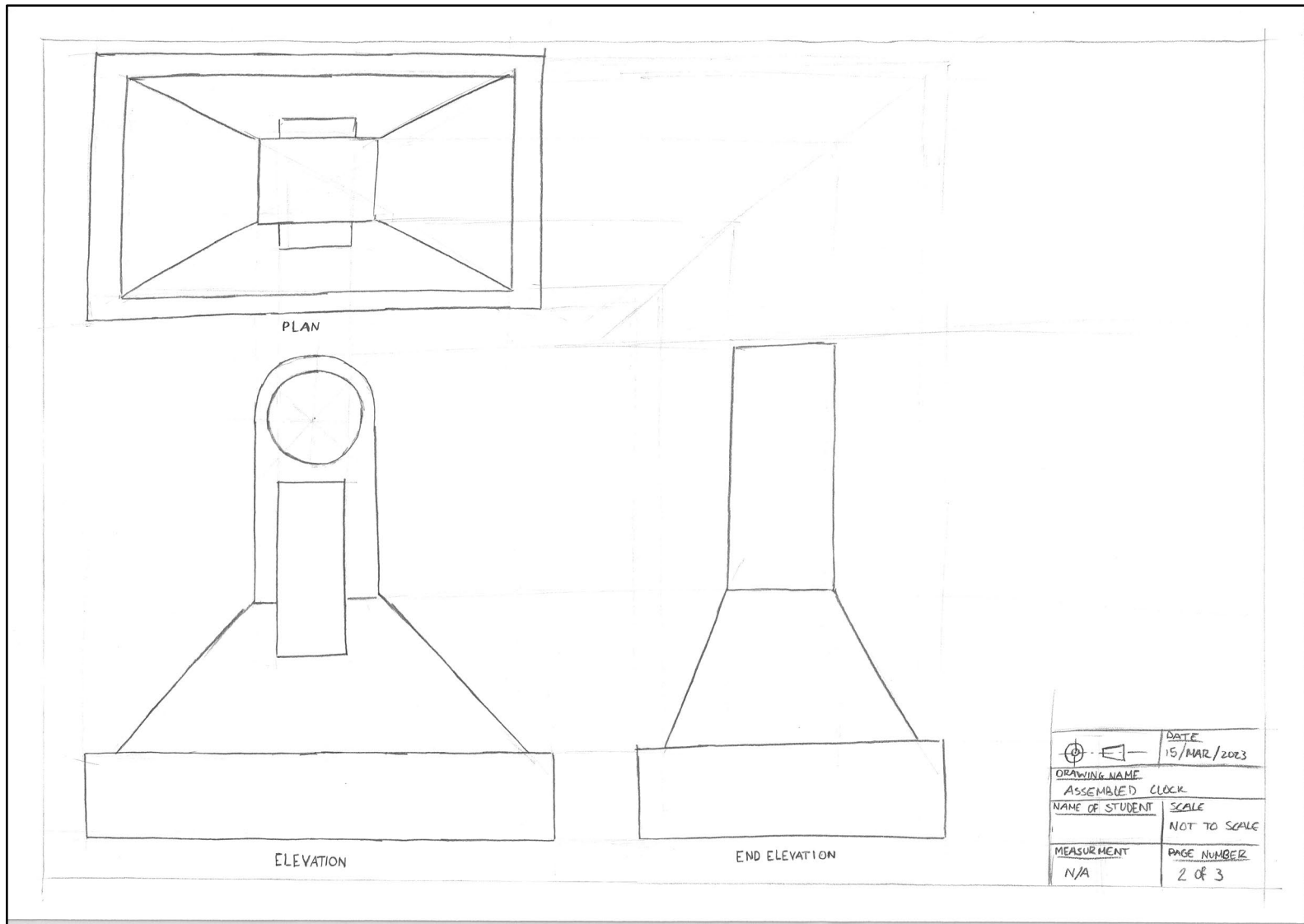


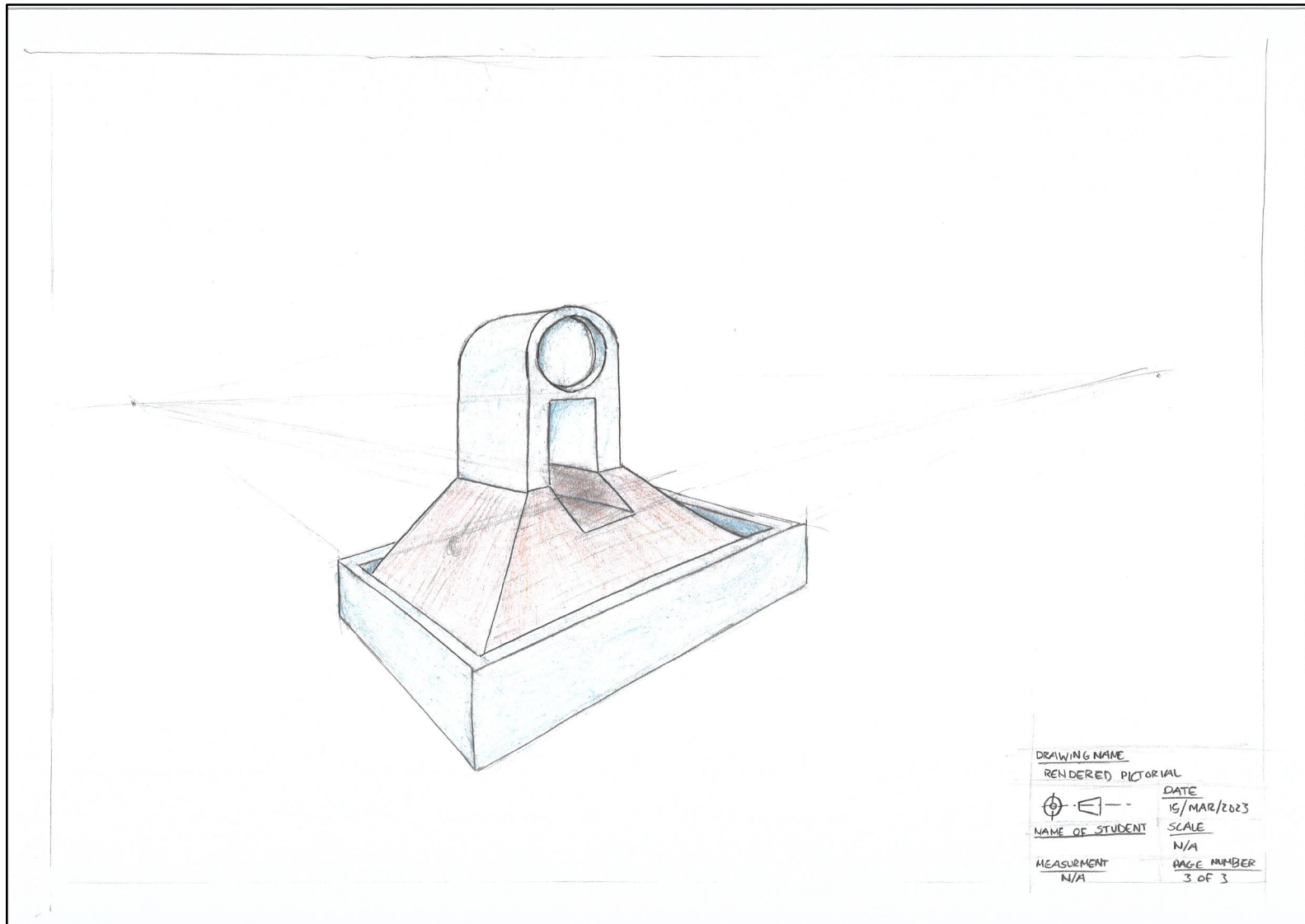






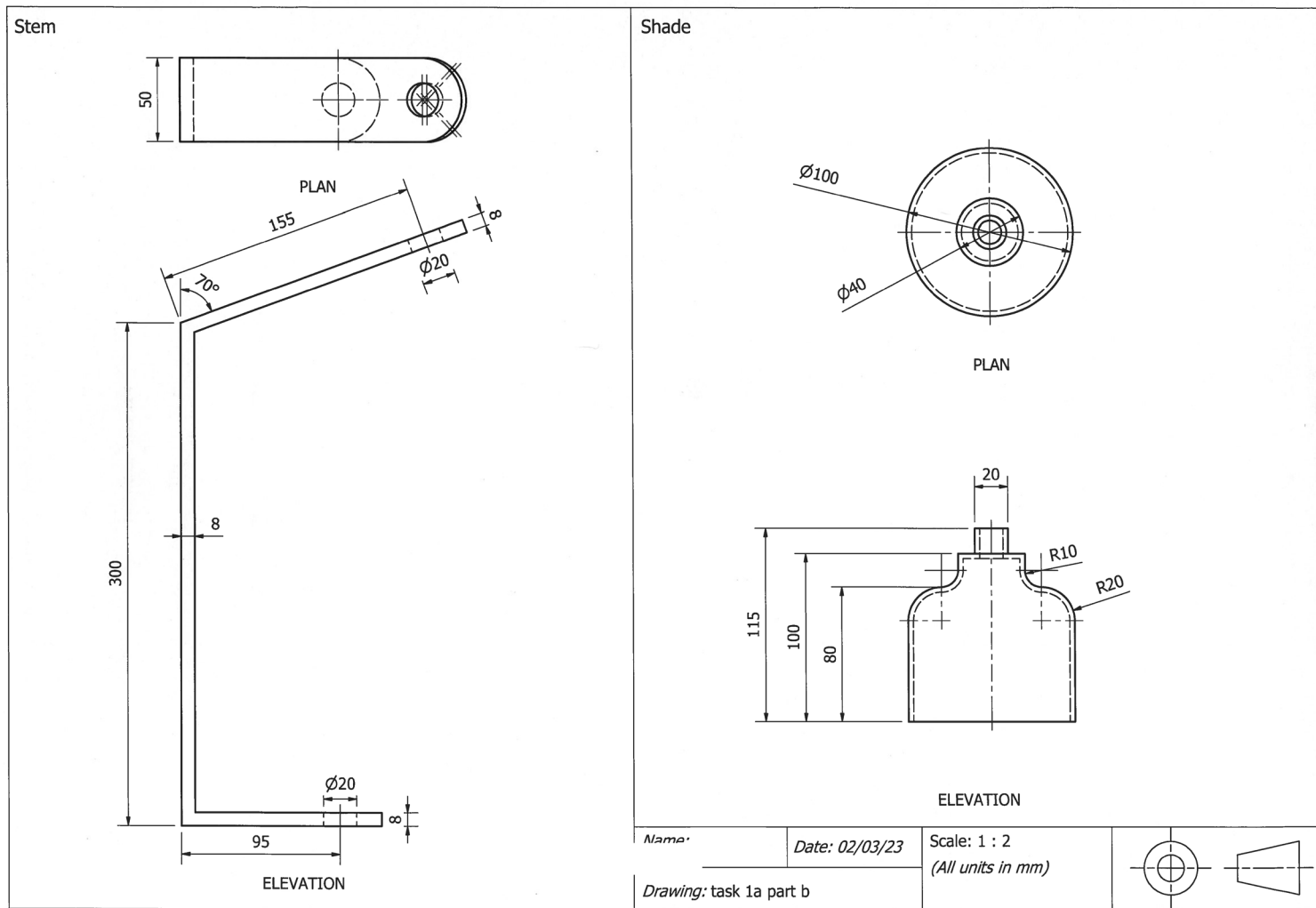


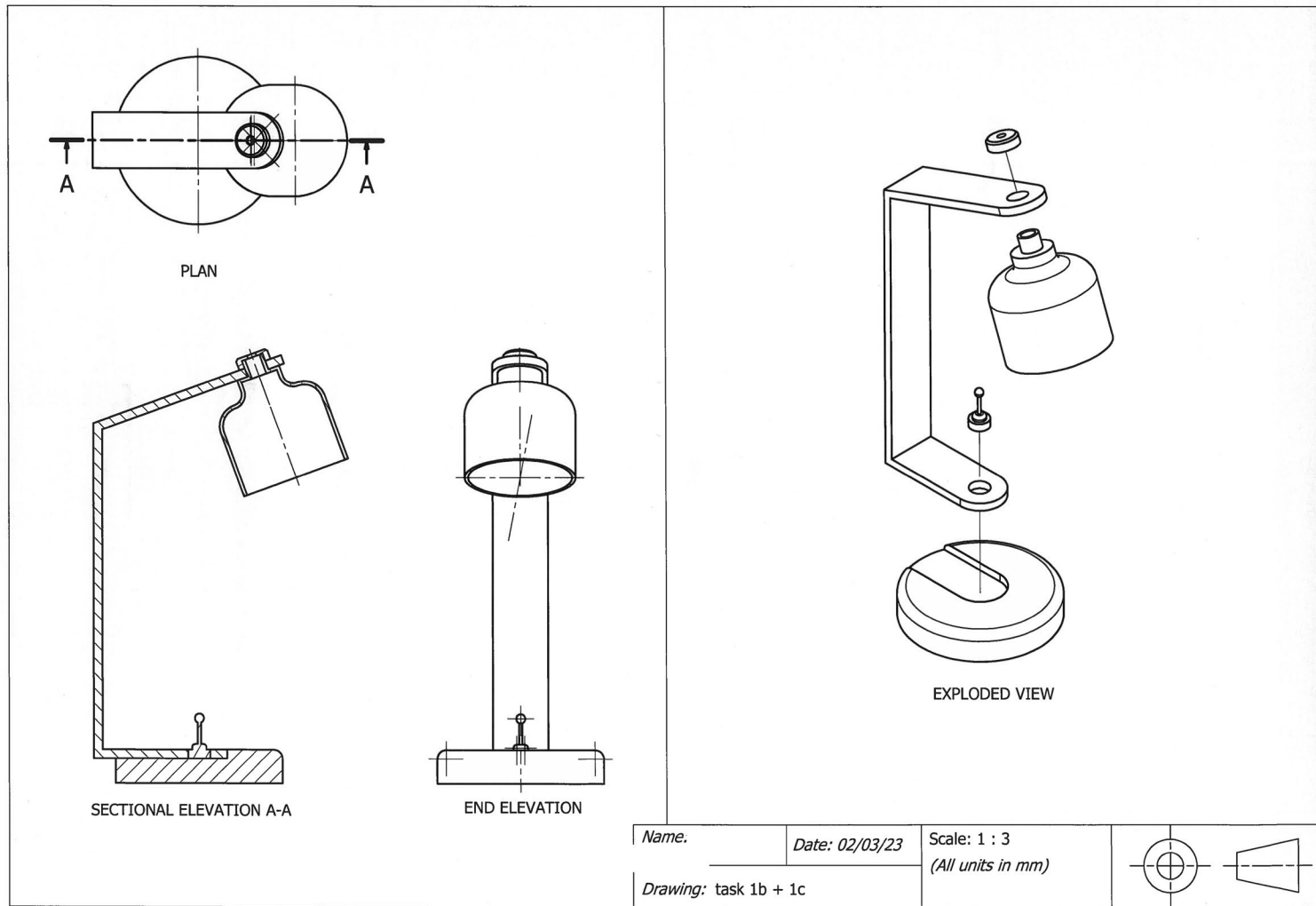


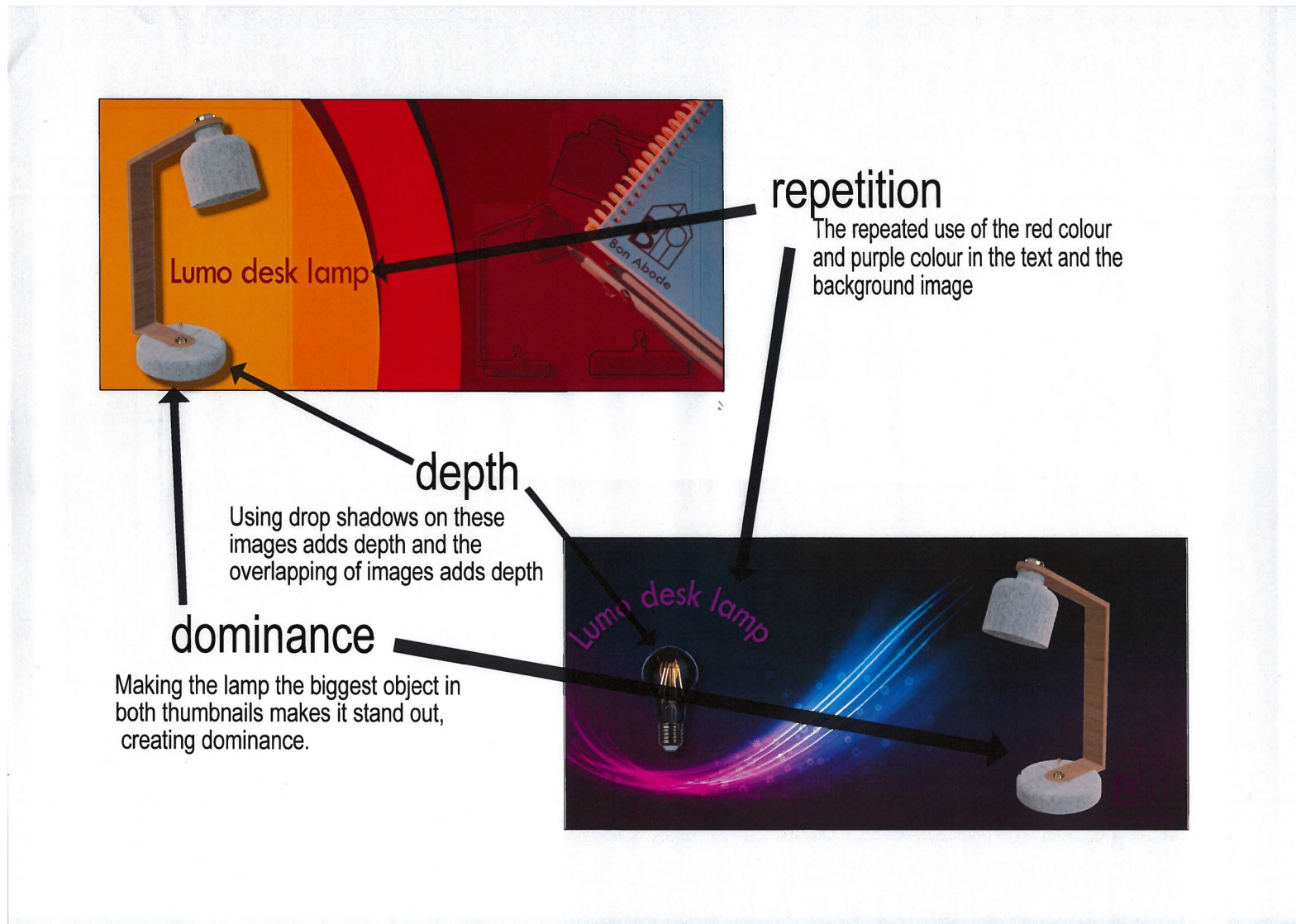


Candidate 6 evidence

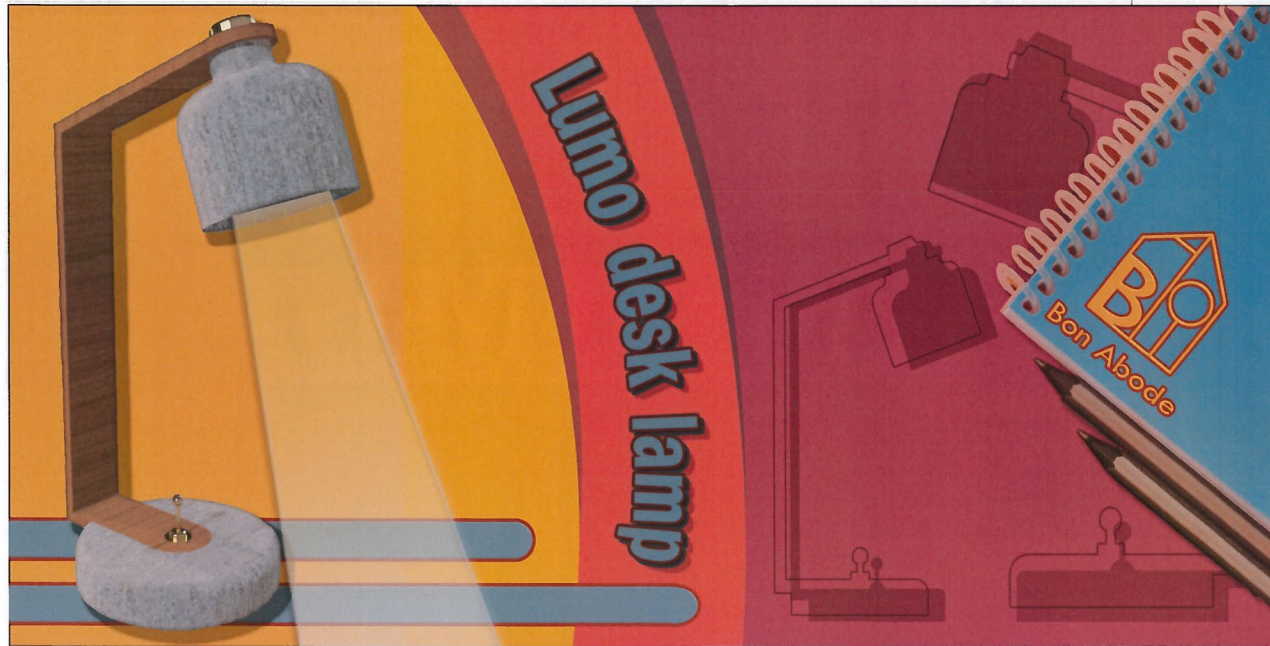
<p>Base - Scale 1 : 2</p> <p>PLAN</p> <p>ELEVATION</p>	<p>Fixing Nut</p> <p>PLAN</p> <p>ELEVATION</p>	<p>Toggle Switch</p> <p>PLAN</p> <p>ELEVATION</p>
<p>Name: _____</p> <p>Date: 27/2/23</p> <p>Drawing: task 1a part a</p>		<p>Scale - 2 : 1 (unless otherwise specified) (All units in mm)</p>








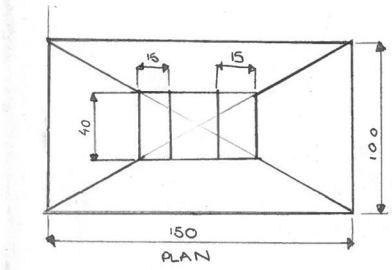
Dominance has been used in the layout by making the lamp the largest object on the page. This makes the product stand out the most and draws the eye to it. This helps to create a high visual impact as the lamp is the first thing you see when you look at the layout.



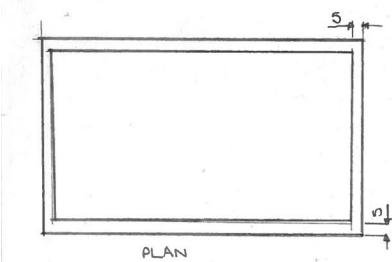
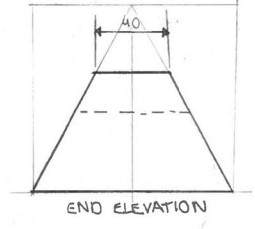
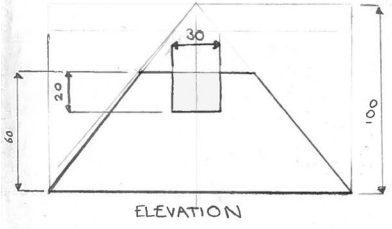
Unity and repetition have been used in the layout by repeating the colours of red, blue, and yellow in the text and background images. The usage of the primary colours creates a warm, playful atmosphere and repeating the colours adds harmony and brings the layout together.

TASK 3A

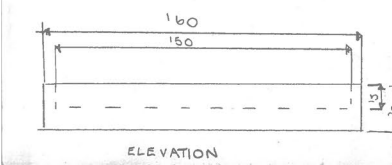
NAME:
DRAWING: 3A




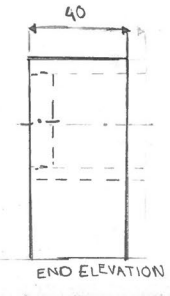
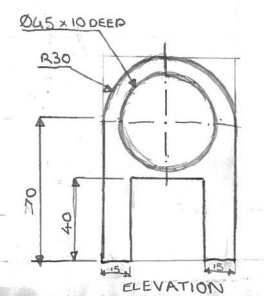
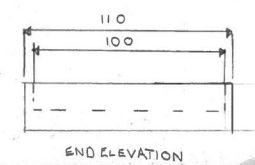
clock stand



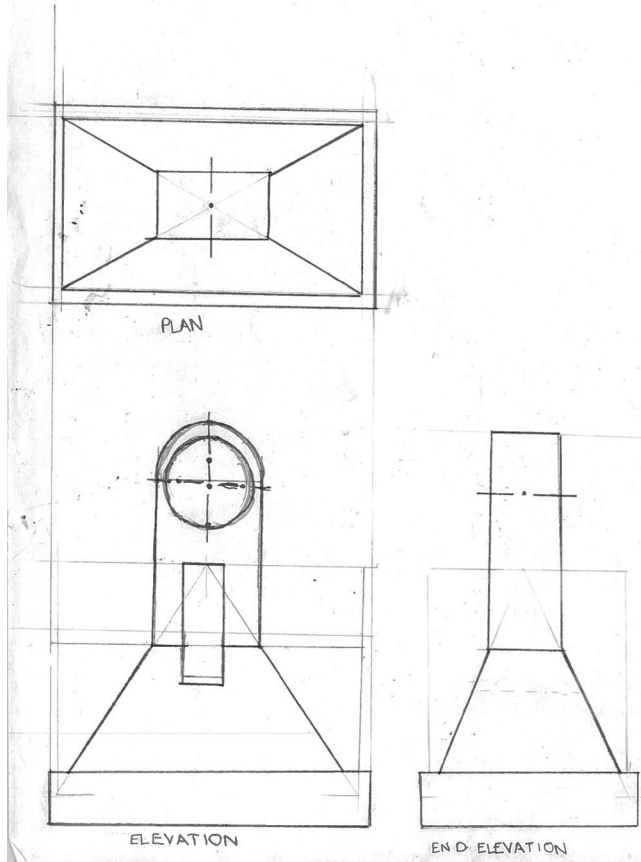
clock base



clock top

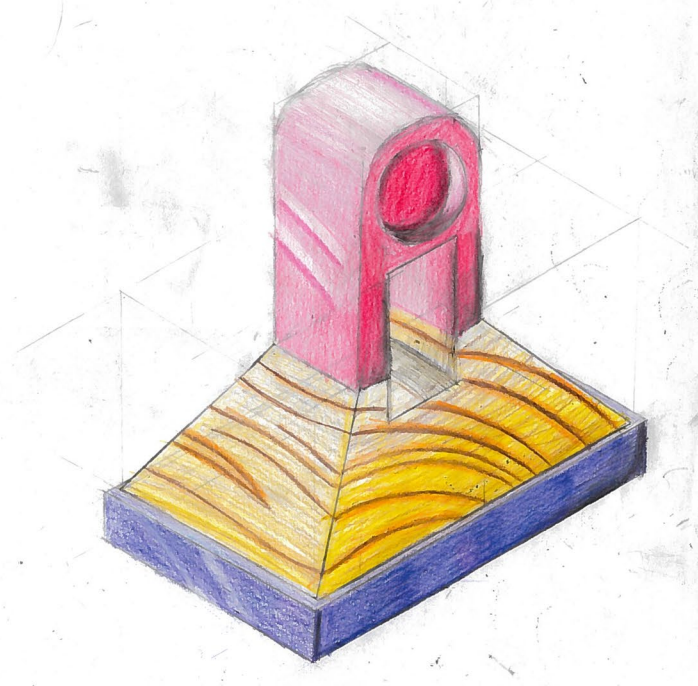


TASK 3B



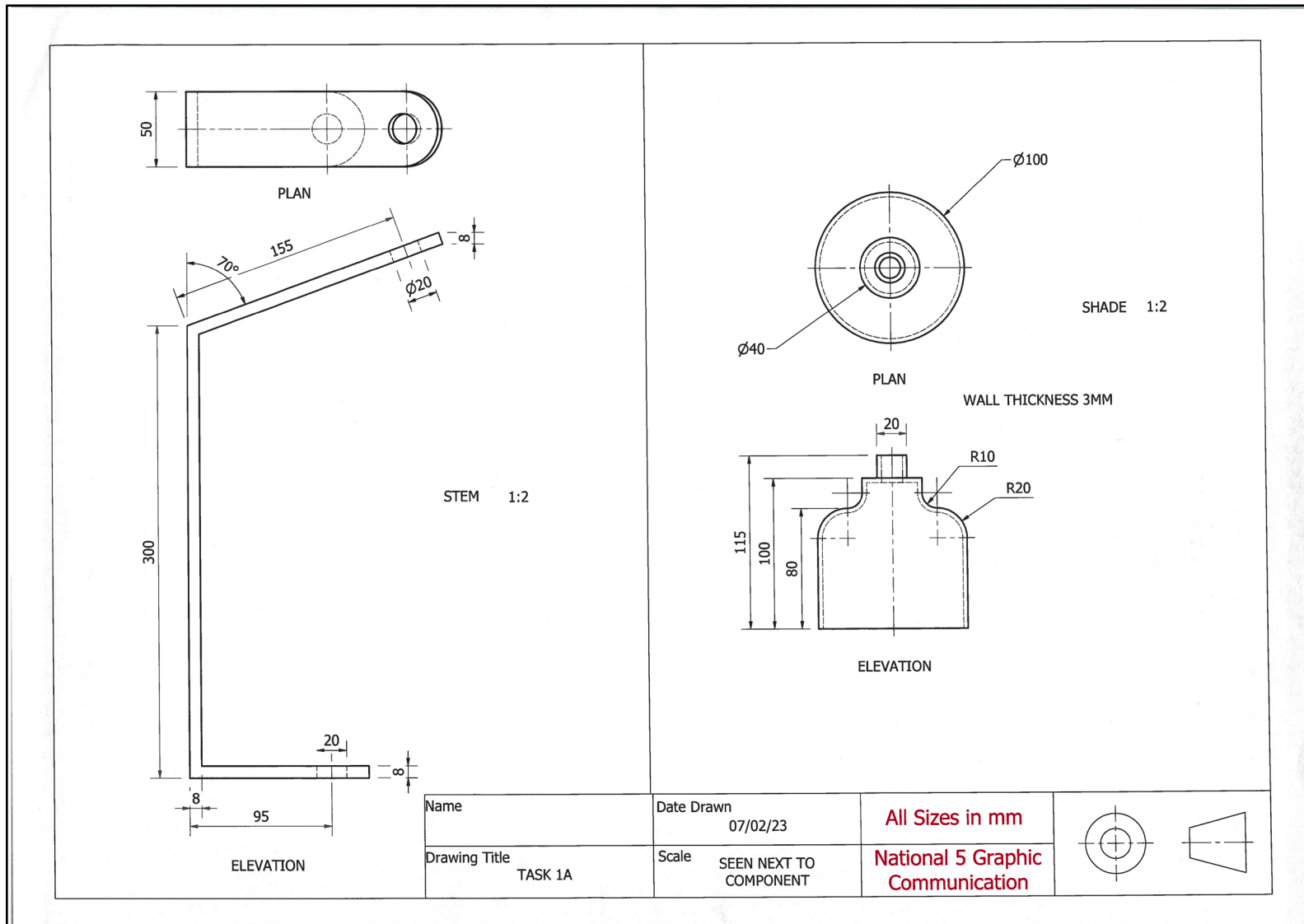
TASK 3C

NAME:
DRAWING: 3B/C



Candidate 7 evidence

<p>BASE 1:2</p> <p style="text-align: center;">PLAN</p> <p style="text-align: center;">ELEVATION</p>	<p>FIXING NUT 3:1</p> <p style="text-align: center;">PLAN</p> <p style="text-align: center;">ELEVATION</p>	<p>TOGGLE SWITCH 2:1</p> <p style="text-align: center;">PLAN</p> <p style="text-align: center;">ELEVATION</p>				
<table border="1" style="width: 100%; border-collapse: collapse;"> <tr> <td style="width: 50%;">Name</td> <td style="width: 50%;">Date Drawn 03/02/23</td> </tr> <tr> <td>Drawing Title TASK 1A</td> <td>Scale SEEN NEXT TO COMPONENT</td> </tr> </table>		Name	Date Drawn 03/02/23	Drawing Title TASK 1A	Scale SEEN NEXT TO COMPONENT	<p>All Sizes in mm</p> <p>National 5 Graphic Communication</p>
Name	Date Drawn 03/02/23					
Drawing Title TASK 1A	Scale SEEN NEXT TO COMPONENT					



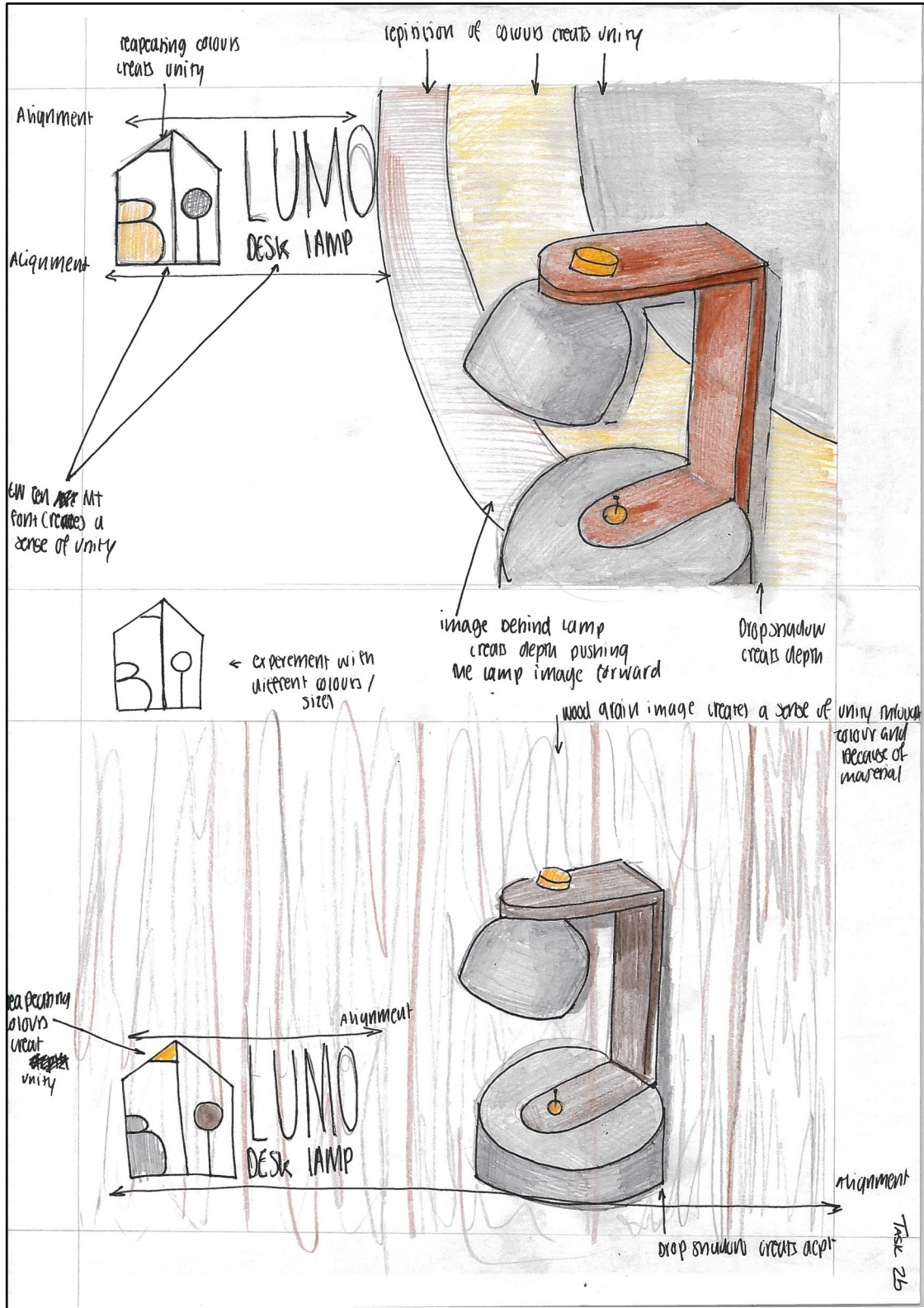
The drawing consists of four main views of a desk lamp:

- EXPLODED VIEW 1:2:** Shows the lamp's components separated: a circular base with a slot, a vertical stem with a pin, a horizontal arm with a hole, a cylindrical lampshade with a neck, and a small circular cap.
- PLAN:** A top-down view of the lamp's head assembly, showing the arm and lampshade. Section lines 'D-D' are drawn across the arm.
- SECTION D-D:** A cross-sectional view of the lamp, showing the internal structure of the arm, the lampshade's attachment, and the base.
- END ELEVATION:** A side view of the fully assembled lamp, showing the base, stem, arm, and lampshade.

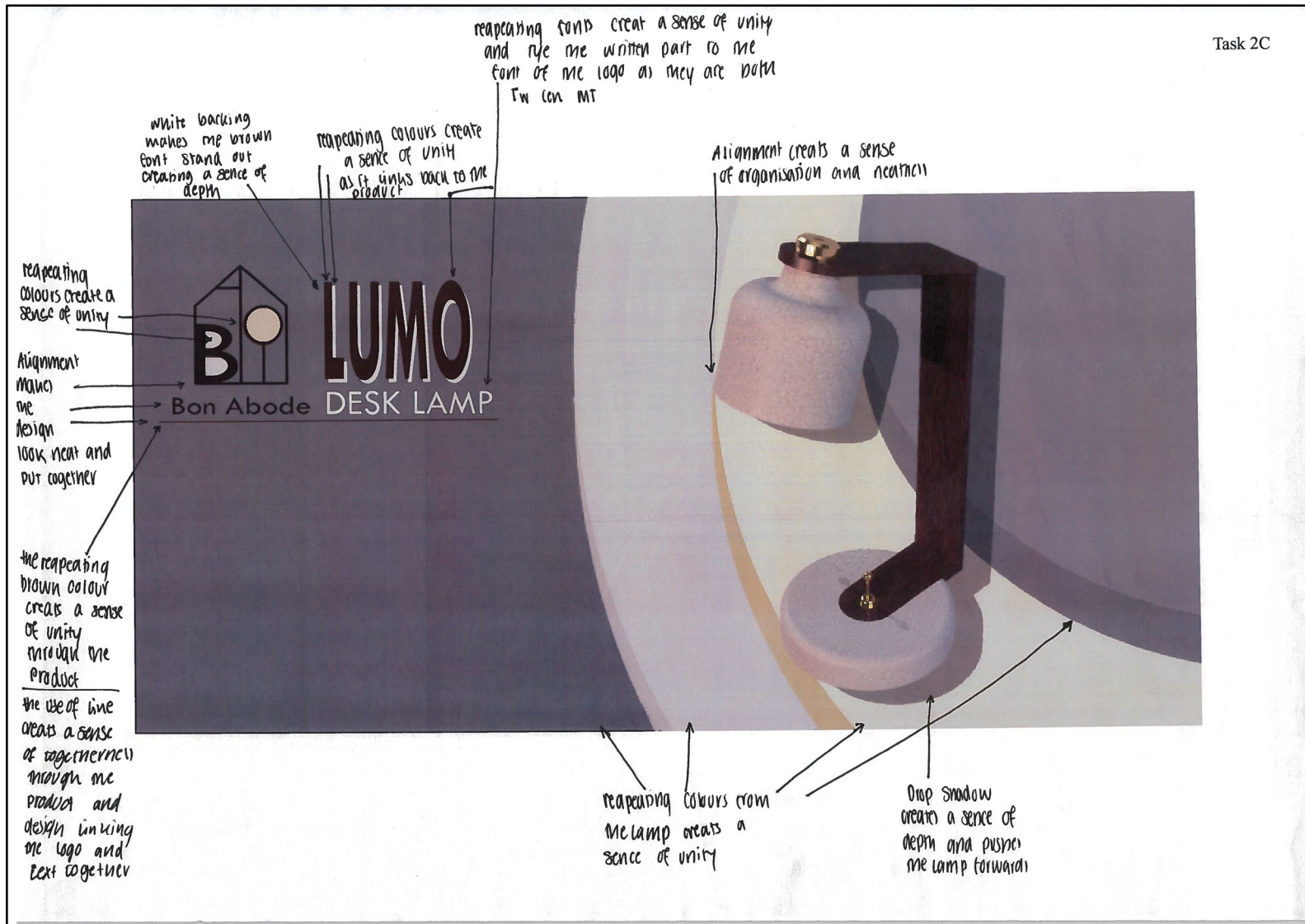
ASSEMBLED LAMP 1:4

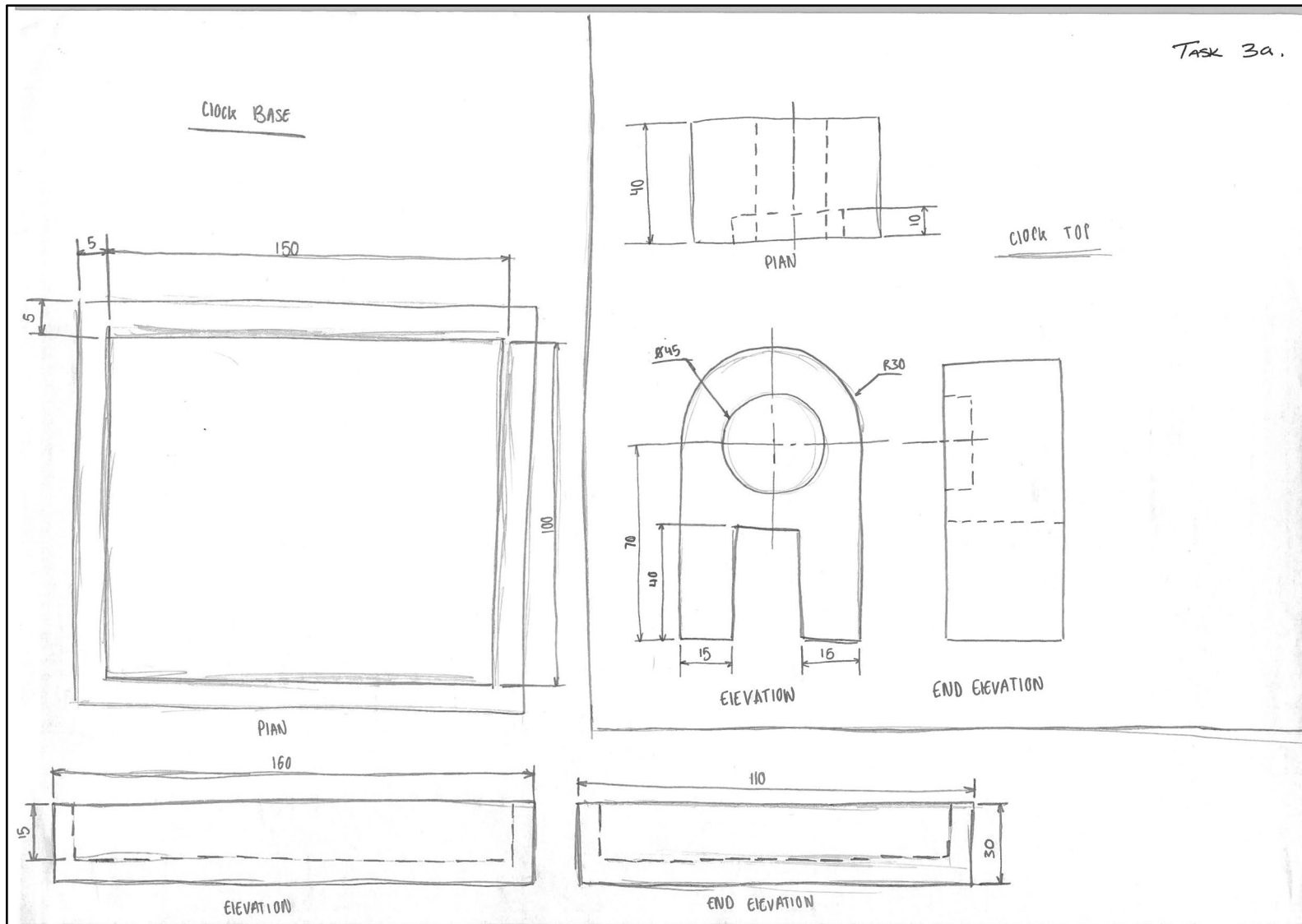
Name	Date Drawn 07/02/23	All Sizes in mm	
Drawing Title TASK 1B AND 1C	Scale SEE NEXT TO COMPONENT	National 5 Graphic Communication	

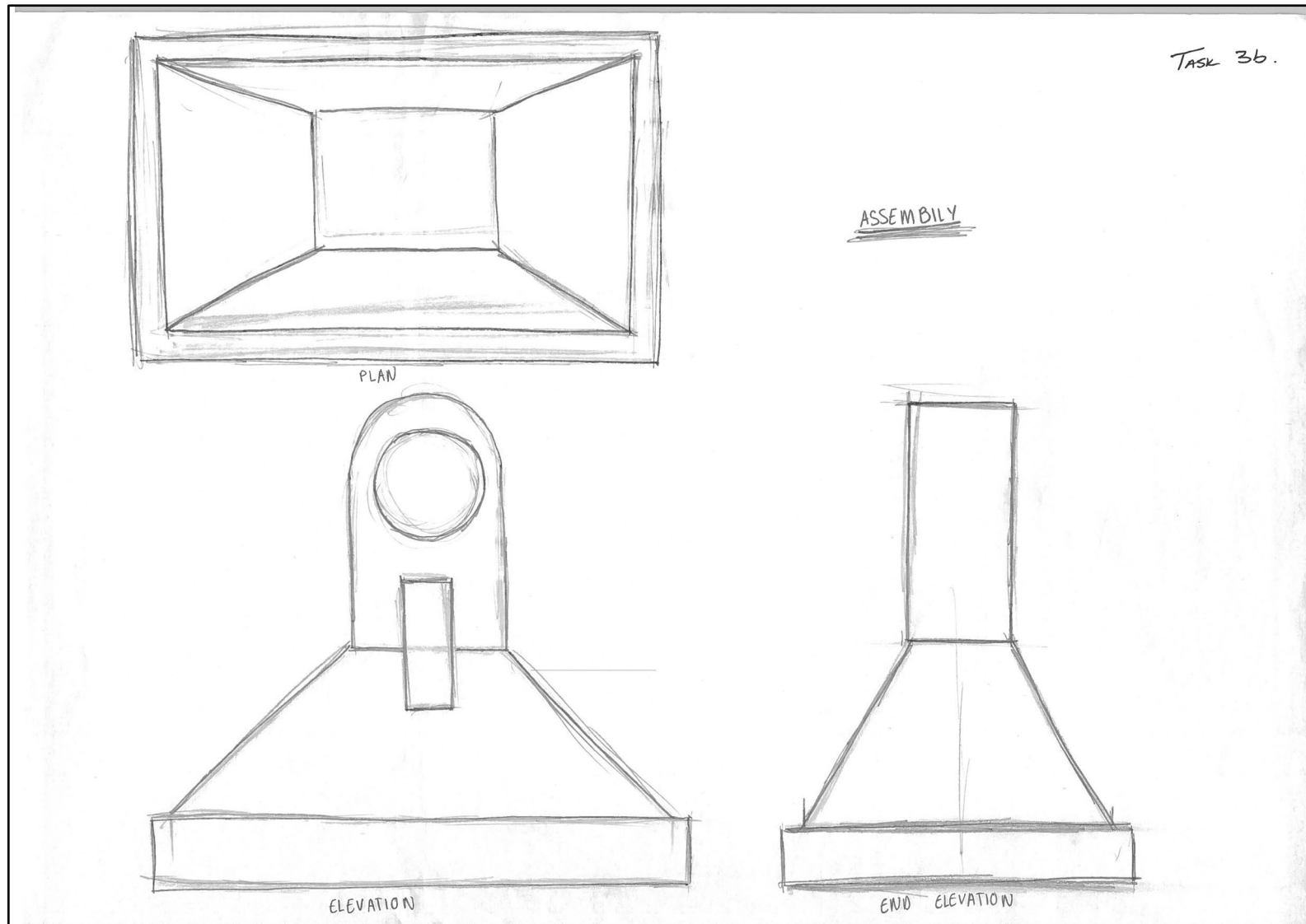


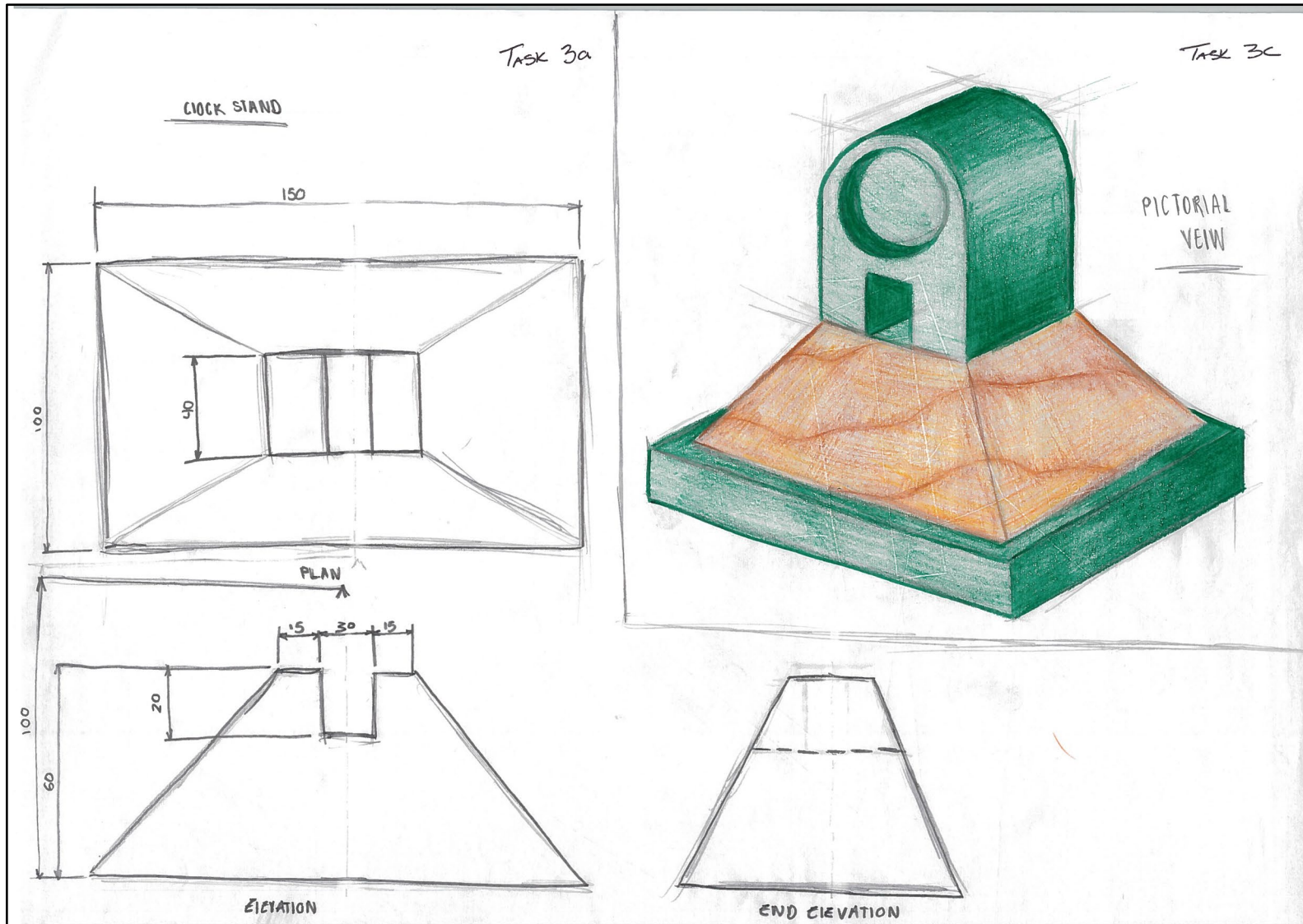


Task 2C









Candidate 8 evidence

Fixing Nut - scale 2:1

plan

elevation

Toggle Switch - scale 2:1

plan

elevation

Shade - scale 1:2

plan

elevation

Stem - scale 1:4

plan

elevation

Base - scale 1:2

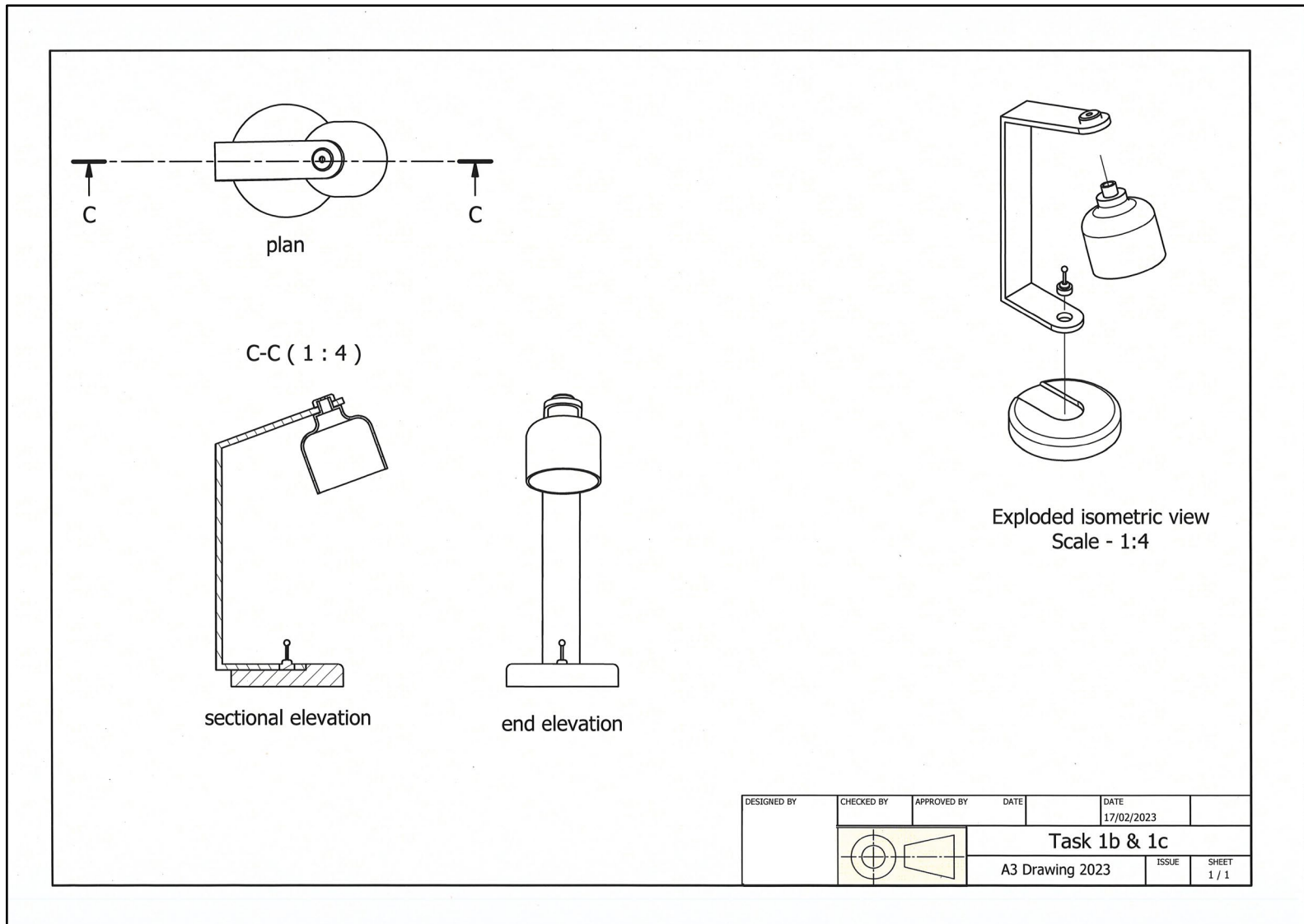
plan

elevation

plan

elevation

DESIGNED BY	CHECKED BY	APPROVED BY	DATE	DATE
				17/02/2023
Task 1a				
task 1a			ISSUE	SHEET
				1 / 1





TASK 2B

Depth - is shown where the title is on top of a rectangle.

Depth - is shown where the lamp is on top of the picture.

Depth

Bon Abode

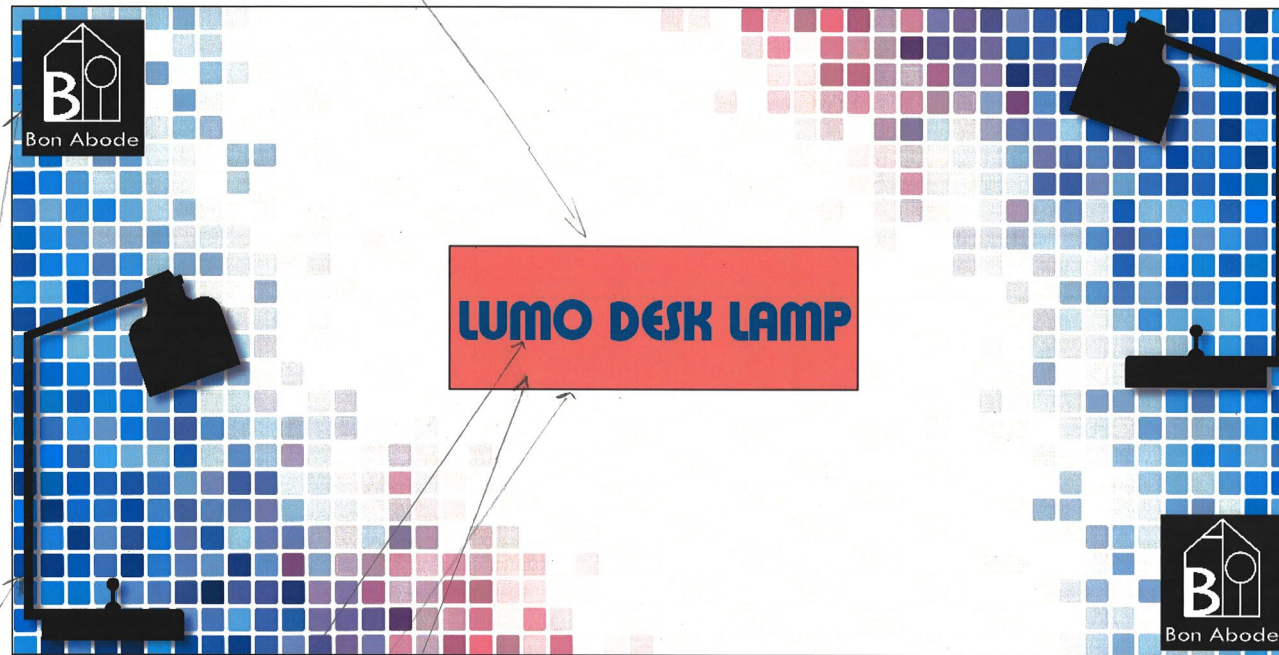
LUMO DESK LAMP

Bon Abode

LUMO DESK LAMP

TASK 2C

Depth - depth is shown where the title is in front of the background it allows the title to stand out.



Alignment - alignment is used with the lamp and the black rectangle as they are both aligned to the left. This helps the graphic look more organised.

Contrast - contrast is used with the title and the rectangle background behind it, this adds interest to the page making the title more eye catching and directing the reader to it.

Shape - shape has been used with the rectangle behind the title, it helps create depth and emphasises the title.

