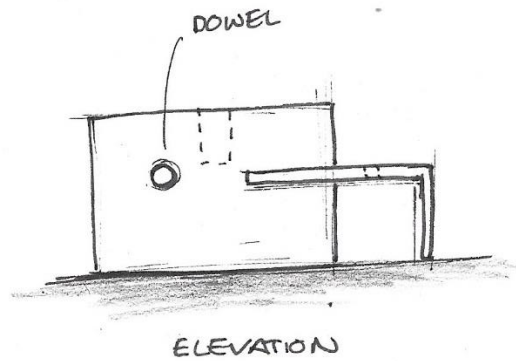
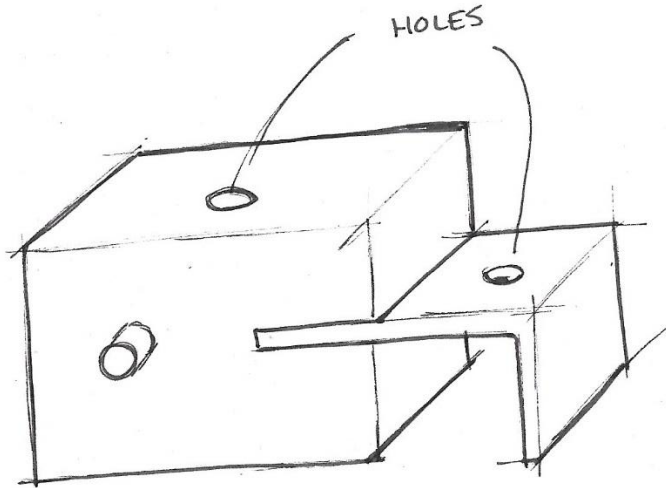


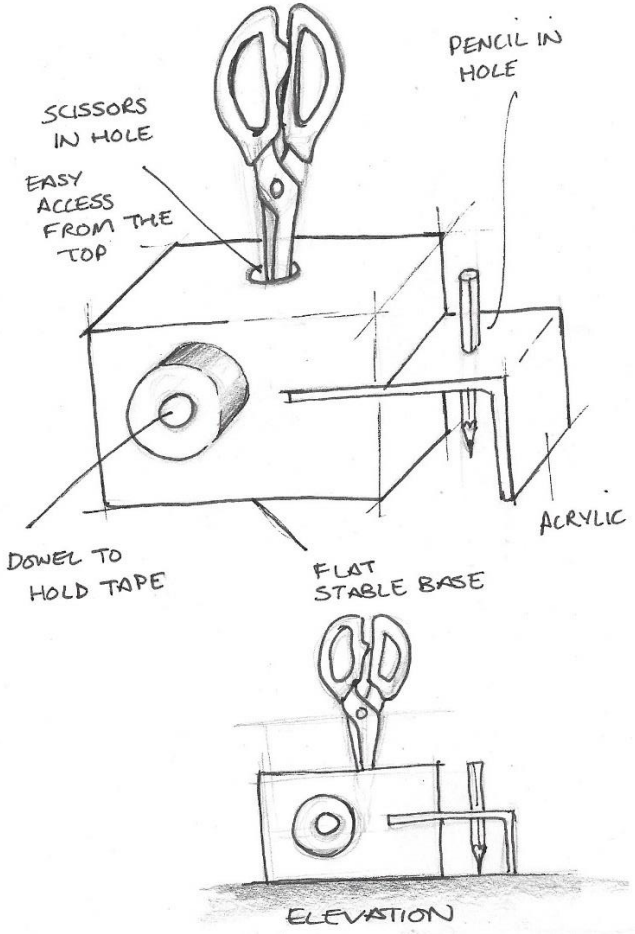
National 5 Design and Manufacture – Exploration Task 1

Starting point for Task 1: Exploring visual aspects and pathways

Notes:



Exploration Task 2

Starting point for Task 2: Exploring by applying design knowledge	Specification
 <p>The image contains two hand-drawn sketches of a storage box. The top sketch is a perspective view of a rectangular box made of acrylic. It features a circular hole on the top surface for scissors, a vertical hole on the right side for a pencil, and a circular opening on the front face for a roll of tape. A horizontal dowel is shown passing through the front face to hold the tape. Labels with arrows point to these features: 'SCISSORS IN HOLE', 'EASY ACCESS FROM THE TOP', 'PENCIL IN HOLE', 'DOWEL TO HOLD TAPE', 'FLAT STABLE BASE', and 'ACRYLIC'. The bottom sketch is a front elevation of the same box, showing the circular opening for the tape and the scissors on top. It is labeled 'ELEVATION'.</p>	<p>The product must:</p> <ul style="list-style-type: none">• allow me to demonstrate my practical skills• have separate storage areas for each item• store one pair of scissors• store a small role of sticky tape• store a pencil• have a jungle theme• make it easy to remove and replace the products• be stable <p>Notes:</p>