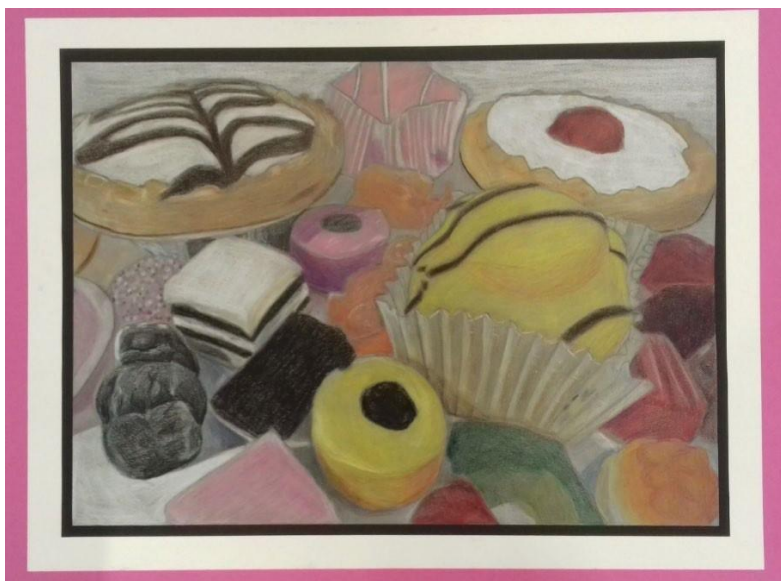


Candidate 6

# Sweets and Cakes



<b>Process</b>	10/10
	28/30
<b>Skills</b>	25/25
	23/25
<b>Evaluation</b>	8/10
<b>TOTAL</b>	94/100



National 5 Art and Design Evaluation		Expressive portfolio	
Candidate name:		Candidate number:	
Centre number:			
<b>Instructions to candidates</b>			
<p>You should reflect on and evaluate the creative process you followed when working through your Expressive portfolio. In your evaluation give justified personal opinions on:</p> <p>the decisions you made when working through your Portfolio;</p> <p>the effectiveness of the visual qualities of your Portfolio, referring to your theme/stimulus.</p> <p>(10 marks)</p>			
<p>When I first started to develop my ideas I first started off with only sweets but I added in cakes as they had a wider range of tones and colours and it would look a lot better for the overall composition. All the compositions I made were quite busy as I scattered the sweets amongst the cakes. I think this made them more interesting as it added in lots of colour, shapes and textures. I made some successful watercolour studies for my development work. I applied the paint smoothly and was aware of what direction I used the brush to make the paint go in the direction of the curves. I found the watercolour trickier when I made a complete composition as I couldn't fix mistakes easily. Some of the colours got a bit murky and it didn't have the brightly coloured look I was after. I tried out pen and paint where I deliberately made the colours more faded so I could capture the shape, textures and tone with the pen in a more contrasting way. I liked the look of this but didn't feel it was special enough from my final piece as it was very simple. The most successful of my studies was the coloured pencil piece. First of all, I feel that I captured a lot of the shapes correctly and went into fine detail with the pencil. This made it look more realistic and appealing to the eye. I was able to layer the pencil tones which meant I could capture the textures and colours better. The dark lines of the liquorice alsorts contrasts nicely with the colours. I didn't lean too heavily with my pencil as I liked the sort, pastel look better and I could also fix mistakes easier. I chose to do my final piece on gray paper as I felt it was a nicer background to have for the colours to sit on top of and it made the coloured pencil stand out more. I like how the colour yellow is he central focus in my final piece as it really draws your eye in. I feel that I could improve on my tonal work but I might need to change the lighting when I take photographs to make the shadows stand out more. Overall, I am pleased with my folio and felt it was very effective to capture the qualities of sweets and cakes close up and makes the overall piece fun and happy.</p>			

<b>Candidate 6 commentary</b>		
<b>Portfolio: Sweets and Cakes</b>		
<b>Section 1 - Expressive Portfolio - Process</b>		
<b>Producing relevant 2D/3D analytical drawings, studies and investigative research appropriate to the selected theme/stimulus</b>		
Limited relevance		A theme is not identified on the first sheet. In their evaluation, the candidate has explained that they chose to investigate sweets and then added in cakes. They have produced four investigative studies, including three cakes and group of liquorice allsorts that are highly relevant to their subsequent development and final piece.
Partially relevant		
Relevant		
Highly relevant	10/10	
<b>Demonstrating a single line of development, showing visual continuity and the refinement of one idea and producing a final piece</b>		
Limited effectiveness		The candidate has produced a highly effective, concise single line of development. They have achieved strong visual continuity by using the same subject matter throughout portfolio and by working in colour. The idea has been refined by experimenting with composition and a range of colour media, although their idea becomes slightly less refined in the final piece because of their creative decisions on scale and media.
Partially effective		
Effective		
Highly effective	28/30	
<b>Section 2 - Expressive Portfolio - Skills</b>		
<b>Creatively using a selection of materials, techniques and/or technology in response to the theme/stimulus</b>		
Limited effectiveness		Materials and techniques are used in a highly effective way across the portfolio. A variety of wet and dry media is handled very competently. The candidate has chosen to work entirely in colour media, which appears to be a strength. The use of watercolour is particularly impressive for this level. The candidate has been able to control wet and dry media to achieve subtle colour and tonal effects.
Partially effective		
Effective		
Highly effective	25/25	
<b>Creatively using appropriate visual elements and expressive effects (eg composition, lighting, viewpoint, mood and atmosphere) in response to the theme/stimulus</b>		
Limited effectiveness		Highly effective understanding of composition is evident with arrangements of subject matter being presented from different viewpoints for creative effect. Colour and tone are used well to suggest form. Although still highly effective, tone is used slightly less proficiently in the final piece, and some contrast has been lost in this larger scale colour pencil study. The complex perspective of the objects is generally communicated well with only occasional inaccuracy.
Partially effective		
Effective		
Highly effective	23/25	
<b>Section 3 - Expressive Portfolio - Evaluation</b>		
<b>Giving justified personal opinions on the decisions made when working through their expressive portfolio and evaluating the effectiveness of the visual qualities of their expressive portfolio with reference to their theme/stimulus</b>		
Little or no justification		The candidate has explained their choice of subject matter and their approach to composition, giving an indication of what they were trying to achieve. They have discussed their choice of materials and techniques and reflected on some of the issues they experienced. A critical evaluation has been given on their final piece. This is generally positive, giving justifications as to why they think it is the most successful part of the portfolio. They have also given the opinion that it could be improved tonally and explained how this could be achieved. Art vocabulary is used appropriately to convey their opinions.
Simple justification/critical evaluation		
Some justification and critical evaluation	8/10	
Justification showing focused critical evaluation		