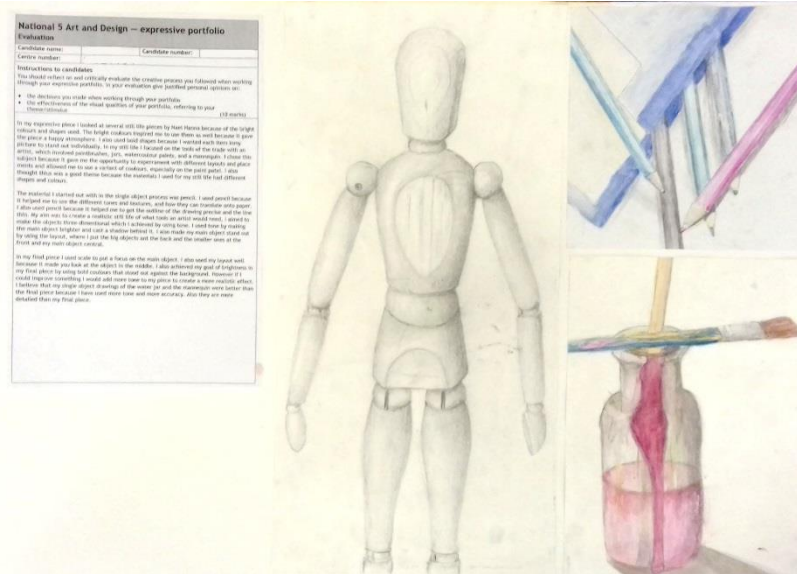
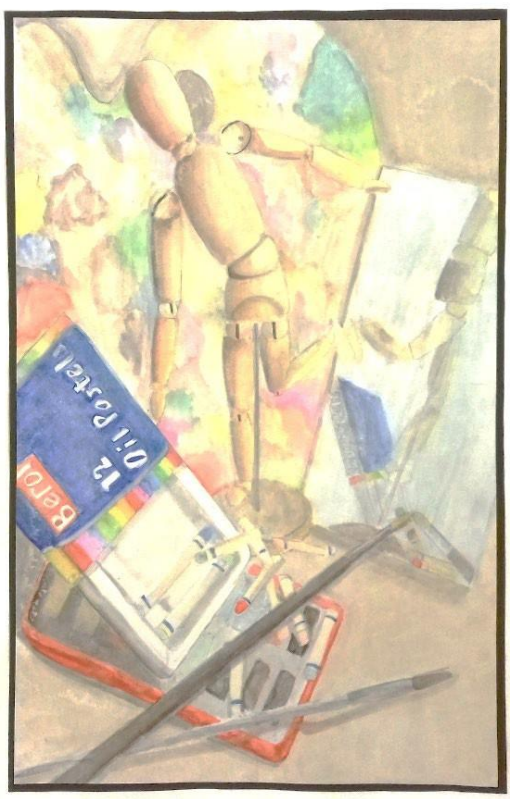


Candidate 5

Tools of the Trade



Process	10/10
	25/30
Skills	20/25
	23/25
Evaluation	8/10
TOTAL	86/100



National 5 Art and Design Evaluation		Expressive portfolio	
Candidate name:		Candidate number:	
Centre number:			
Instructions to candidates			
<p>You should reflect on and evaluate the creative process you followed when working through your Expressive portfolio. In your evaluation give justified personal opinions on:</p> <p>the decisions you made when working through your Portfolio;</p> <p>the effectiveness of the visual qualities of your Portfolio, referring to your theme/stimulus.</p> <p>(10 marks)</p>			
<p>In my expressive piece I looked at several still life pieces by Nael Hanna because of the bright colours and shapes used. The bright colours inspired me to use them as well because it gave the piece a happy atmosphere. I also used bold shapes because I wanted each item in my picture to stand out individually. In my still life I focused on the tools of the trade with an artist, which involved paintbrushes, jars, watercolour paints, and a mannequin. I chose this subject because it gave me opportunity to experiment with different layouts and placements and allowed me to use a variety of colours, especially on the paint palette. I also thought this was a good theme because the materials I used for my still life had different shapes and colours.</p> <p>The material I started out with in the single object process was pencil. I used pencil because it helped me to see the different tones and textures, and how they can translate onto paper. I also used pencil because it helped me to get the outline of the drawing precise and the line thin. My aim was to create a realistic still life of what tools and artists would need, I aimed to make the objects three-dimensional which I achieved by using tone. I also made my main object stand out by using the layout, where I put the big objects at the back and the smaller ones at the front and my main object central.</p> <p>In my final piece I used scale to put a focus on the main object. I also used my layout well because it made you look at the object in the middle. I also achieved my goal of brightness in my final piece by using bold colours that stood out against the background. However if I could improve something I would add more tone to my piece to create a more realistic effect. I believe that my single object drawings of the water jar and the mannequin were better than the final piece because I have used more tone and more accuracy. Also they are more detailed than my final piece.</p>			

Candidate 5 commentary		
Portfolio: Tools of the Trade		
Section 1 - Expressive Portfolio - Process		
Producing relevant 2D/3D analytical drawings, studies and investigative research appropriate to the selected theme/stimulus		
Limited relevance		The candidate has selected the theme 'Tools of the Trade' which they have interpreted as tools an artist would use. Three highly relevant investigative studies have been made which have then been used in different combinations in the subsequent development.
Partially relevant		
Relevant		
Highly relevant	10/10	
Demonstrating a single line of development, showing visual continuity and the refinement of one idea and producing a final piece		
Limited effectiveness		The candidate has created a clear line of development, combining key investigative objects with other relevant objects. The mannequin in most of the developments and final piece helps to give the portfolio visual continuity. Refinement is shown through the introduction and removal of various objects in the compositional arrangements and experimentation with expressive technique, leading to a successfully realised final piece. This element of the process is highly effective.
Partially effective		
Effective		
Highly effective	25/30	
Section 2 - Expressive Portfolio - Skills		
Creatively using a selection of materials, techniques and/or technology in response to the theme/stimulus		
Limited effectiveness		The candidate has shown highly effective use of materials and techniques, mainly focusing on pencil and watercolour. A subtle, yet expressive style has been achieved showing a creative application of the chosen techniques.
Partially effective		
Effective		
Highly effective	20/25	
Creatively using appropriate visual elements and expressive effects (eg composition, lighting, viewpoint, mood and atmosphere) in response to the theme/stimulus		
Limited effectiveness		Colour and tone have been used in a highly effective way to convey mood and atmosphere. Texture has used for expressive effect in the brushwork. Form and proportion are generally very accurate. Perspective has been communicated well with a number of challenging objects being depicted from viewpoints which are not straightforward. The introduction of a mirror in the final piece to reflect part of the scene is creative and makes the composition more dynamic.
Partially effective		
Effective		
Highly effective	23/25	
Section 3 - Expressive Portfolio - Evaluation		
Giving justified personal opinions on the decisions made when working through their expressive portfolio and evaluating the effectiveness of the visual qualities of their expressive portfolio with reference to their theme/stimulus		
Little or no justification		The candidate has justified some of their creative choices. They have explained their intentions and the style they were trying to achieve. Compositional decisions are discussed, as well as the advantages of certain materials. The candidate has been self-critical and realistic when reflecting on the success of their final piece, comparing the quality with that achieved in some of the development studies, and making a suggested point for improvement. Appropriate art vocabulary has been used to communicate their opinions.
Simple justification/critical evaluation		
Some justification and critical evaluation	8/10	
Justification showing focused critical evaluation		