

Candidate 1 evidence

1b Investigations (15 marks – each investigation is worth 5 marks)

Carry out three investigations into the key themes, using at least two different investigative techniques.

Your investigations should include research into each of the following, in relation to your chosen brief:

- ◆ textile technologies
- ◆ consumer needs/choices
- ◆ fashion/textile trends

Your evidence for each investigation must include:

- ◆ details of the research technique and source(s) used (1 mark)
- ◆ the results of your investigations
- ◆ the main points from your research (4 marks)

Complete the table below.

	Investigations Aim What information will you collect?	Investigations Technique How will you collect the information?	Investigations Source Where will you find the information?
1	To find out what types of Themes, fabrics, colours and brands are popular at the Met Gala.	I will do Internet research	I will look on Vogue and Baazar and other similar websites that cover the Met Gala.
2	To find out what teenagers think of Met Gala themes, brands, celebrities and colours.	I will issue questionnaires to teenagers	I will give out 20 questionnaires to teenagers who like the Met Gala at school in the
3	To find out about construction techniques on the decorative fashion item.	Interview with fashion and textiles expert	I will do an interview with Fashion and Textiles teacher at the with over 25years experience.

You must produce the results of your investigations shown above.

You can present the evidence from your investigations in a variety of ways.

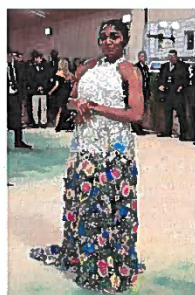
Present your investigation evidence below – you can attach additional pages if needed

MET GALA

Investigation 1 - Internet research

AIM: To find out what types of fabric, colours, themes and brands are popular at the Met Gala.

2024 Theme: Sleeping Beauties: Reawakening Fashion, The Garden of Time



Ayo Edebiri -
Loewe

This gown is a custom-made floral lace halter neck designed by Loewe. The piece incorporated a backless silhouette and had pink, yellow, green and blue hand-painted and embroidered ombre 3D applique flowers on the bottom half of the gown.

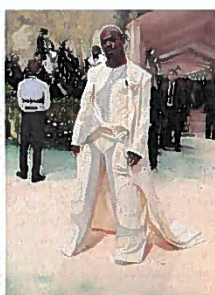
<https://www.harpersbazaar.com/celebrity/latest/a60691791/ayo-edebiri-red-carpet-photos-met-gala-2024/>



Zendaya - Maison
Margiela

This dress is a one-shouldered gown with royal blue and green diagonal stripes. The gown had fruit embellishments on one side of her waist. She accessorised with a bouquet, mesh net, accessory on her head.

<https://www.harpersbazaar.com/celebrity/latest/a60662466/zendaya-red-carpet-photos-met-gala-2024/>

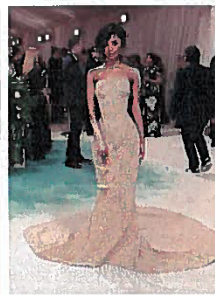


Lil Nas X - Raul
Lopez

This is an off-white suit and cape with lines of buttons on the front and glittering silver sequined fabric.

He wore jewellery from David Yurman to accessorise

<https://www.harpersbazaar.com/celebrity/latest/a60663325/lil-nas-x-red-carpet-photos-met-gala-2024/>



Tyla- Oliver
Rousteing

This is a strapless dress made of sand and it was made to fit her body using an applique method. She carried an hourglass as an accessory

<https://www.harpersbazaar.com/uk/fashion/fashion-news/a60715186/tyla-2024-met-gala-sand-dress/>

2023 Theme: Karl Lagerfeld: A line of Beauty



Anne Hathaway - Atelier Versace
This was a strapless, tweed, gown pulled together with big gold safety pins and she accessorised with a Bulgari choker and white tweed gloves to match the dress.

<https://www.harperbazaar.com/celebrity/latest/a43566162/anne-hathaway-met-gala-2023/>

A\$AP Rocky - Gucci
This was a red pleated kilt that was longer at the back and baggy jeans with sparkling jewels, a black blazer and to accessorise Boucheron jewellery and a long black tie

<https://www.harperbazaar.com/celebrity/latest/a43567401/rihanna-asap-rocky-met-gala-2023/>

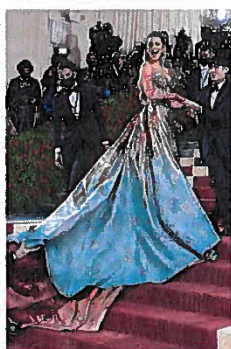
Rihanna - Valentino Haute Couture
This was a maternity, long white gown with a structured rose torso and head piece, she accessorised with white gloves and a pair of black sunglasses

<https://www.harperbazaar.com/celebrity/latest/a43567401/rihanna-asap-rocky-met-gala-2023/>

Cardi B - Sensen Lii
This was a black ballgown covered in big black roses with a corset torso and she had a white shirt underneath. She wore a black tie, black gloves and a large black, leather head band to accessorise

<https://www.harperbazaar.com/celebrity/latest/a43568110/cardi-b-met-gala-2023/>

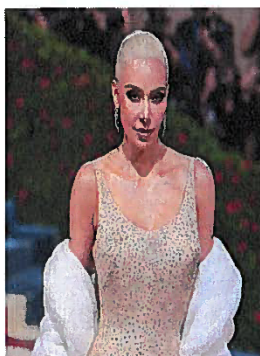
2022 Theme: In America: An Anthology of Fashion



Blake Lively - Atelier Versace

This was a rose gold, fitted, jewelled dress with a long blue and rose gold train tied in a bow at the front, she accessorised with long rose gold gloves to match her gown

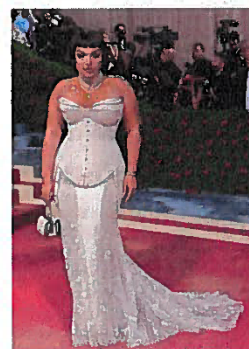
<https://www.harpersbazaar.com/uk/fashion/fashion-news/a39887968/blake-lively-dress-change-met-gala-2022/>



Kim Kardashian - Jean Louis

This was Marilyn Monroe's dress that she wore in 1962. This whole look was inspired by Marilyn Monroe. This was a long fitted beige, sequined dress and a white fur coat, that she wore off the shoulders.

<https://www.harpersbazaar.com/beauty/hair/a39884270/kim-kardashian-blonde-marilyn-monroe-met-gala-2022/>



Paloma Elsesser- Coach

She wore a structured light pink satin corset that had buttons up the centre paired with a flowing, hand-embroidered floral skirt

<https://www.luxsure.fr/en/2022/05/06/paloma-elsesser-in-coach-at-2022-met-gala/>

Each year the Met Gala is hosted in the Metropolitan Museum of Art on the first Monday of May. Every Met Gala look must be preapproved by Anna Wintour. The Met Gala originated in 1948. The Met Gala is a fundraising event for the Metropolitan Museum of Art's Costume Institute. Andrew Bolton and Anna Wintour are the ones who decide the theme for each year. Each outfit and accessories match the theme and designers go all out every year.

Main designers include:

Versace, Dior, Gucci, Chanel, Ralph Lauren, Marc Jacobs and Karl Lagerfeld

Conclusions

From my internet research I have discovered the following items were used:

- **Items -**
Dress
Skirt
Kilt
Ties
Bags

In my next investigation I will ask teenagers which item they prefer for Met Gala.

From my internet research I have discovered the following colours were used

- **Colours -**
White - Rihanna
Black - Cardi B
Rose Gold - Blake Lively
Red - A\$AP ROCKY
Pink - Paloma Elsesser
Royal Blue - Zendaya
Green - Ayo Edebiri
Beige - Kim Kardashian

In my next investigation I will ask teenagers which colour they prefer for the Met Gala.

From my internet research I have discovered the following decorative features were used:

- **Decorative Features -**
Buttons
Headbands
Ties
Head pieces
Applique
Sequins

In my next investigation I will ask teenagers what decorative feature they prefer for the Met Gala.

From my internet research I have discovered the following fabrics were used:

- **Fabrics -**
Satin
Tweed
Lace

In my next investigation I will ask teenagers what fabric they prefer for the Met Gala.

I discovered the following patterns were used

- **Patterns -**
Striped
Kilted
Floral

In my next investigation I will ask teenagers what patterns they prefer for the Met Gala

Investigation 2 - Questionnaire for teenagers

AIM: To find out what teenagers think of Met Gala themes, brands, celebrities, decorative techniques and colours.

1. What theme from the Met Gala do you prefer?

2024: Sleeping Beauties: Reawakening Fashion, The Garden of Time	9
2023 Theme: Karl Lagerfeld: A line of Beauty	7
2022 Theme: In America: An Anthology of Fashion	4

The 2024 theme Sleeping Beauties: Reawakening Fashion, The Garden of Time from the Met Gala was the most popular among teenagers. I will consider some influences from this theme for my final design.

2. Which brand from the Met Gala do you prefer?

Loewe	5
Maison Margiela	4
Raul Lopez	2
Oliver Rousteing	0
Atelier Versace	2
Gucci	2
Valentino Haute Couture	3
Sensen Lii	0
Jean Louis	0
Coach	2

Loewe was the most popular brand from the Met Gala among teenagers. I will consider some influences from ~~Loewe~~ designs in my final design.

3. Which celebrity from the Met Gala do you prefer?

Ayo Edebiri	0
Zendaya	8
Lil Nas X	0
Tyla	6
Anne Hathaway	4
ASAP Rocky	0
Rihanna	0
Cardi B	0
Blake Lively	0
Kim Kardashian	2
Paloma Elsesser	0

Tyla was the most popular celebrity from the Met Gala among teenagers. I will consider some influences from this celebrity in my final design.

4. What type of style from the Met Gala do you prefer?

Flared	6
Ball gown	5
Fitted	7
Kilt	0
Suit	2

A fitted look was the most popular style from the Met Gala among teenagers. In my next investigation I will ask the expert how suitable a fitted style is for my final design.

5. What colour from the Met Gala do you prefer?

White	3
Royal Blue	6
Green	5
Sand	0
Black	0
Tartan	0
Rose Gold	3
Beige	0
Light Pink	3

Royal blue was the most popular colour from the Met Gala among teenagers. I will consider using some royal blue in my final design.

6. What accessory from the Met Gala do you prefer?

Bouquet head band	4
Yurman Jewellery	2
Hourglass	2
Bulgari Choker	2
Tweed Gloves	0
Boucheron Jewellery	2
White gloves	0
Black Sunglasses	2
Leather head band	0
Rose gold gloves	0
White fur coat	6

The white fur coat was the most popular accessory from the Met Gala among teenagers. I will consider some influences from this accessory in my final design.

7. Which decorative feature from the Met Gala do you prefer?

Paloma Elsesser's Buttons	0
Anne Hathaway's Safety pins	4
Zendaya's Head bouquet	4
Ayo Edebiri's Floral embellishments	2
Kim Kardashians Sequins	10

Kim Kardashians Sequins were the most popular decorative feature from the Met Gala among teenagers therefore in my next investigation I will ask the expert the best way to incorporate sequins in my final design.

8. What type of fabric from the Met Gala do you prefer?

Tweed	0
Lace	4
Fur	9
Satin	7

Fur and Satin were the most popular type of fabric from the Met Gala among teenagers. In my next investigation I will ask the expert how suitable these fabrics are.

Investigation 3 - Interview with Fashion and Textiles expert -

with over

25years experience

AIM: To find out about construction techniques on the decorative fashion item.

1. Flowers were very popular in the theme The Garden of Time; how could I incorporate flowers in my final design? Flowers could be incorporated by adding 3D flowers to the design they could be handmade or bought online readymade. Each flower could be hand stitched on using invisible thread, to give a neat finish. Embroidered flowers could also be added using stitches you have used before like rose or daisy stitch to create a floral design.

2. A halter neck featured in the Loewe outfit in the Met Gala, therefore I am going to make a halter neck style of dress, where could I find a pattern? Look for a pattern on the Jaycotts website or on the etsy site, there will be a few different halter neck designs.

3. The Loewe dress has inspired me to do an ombre effect with 3D flowers, how could I achieve this look? Look at the Loewe dress to see how the colours go from darker to lighter colours creating an ombre effect. Then try to recreate that effect with the 3d flowers and the fabric of the dress.

4. Royal Blue and Green was very popular colours in the Met Gala, how could I incorporate these colours? As you have decided to make the dress an ombre style it might be good to make the colours of the dress go from royal blue to green or from green to royal blue. The ombre effect could start with the darkest colour at the hem changing to lighter shades up the body dress.

5. A fur coat was a very popular accessory from the questionnaire, where would fur look best on a dress? Fur could be used as a trim at the top of the dress, or as a trim along the hem of the dress.

6. Sequins were a very popular decorative feature; I am going to use them in my final design, how could I attach them? Sequins could be hand stitched on using invisible thread, this will give a neater finish.

7. Fur and satin were the most popular fabrics among teenagers, how could I include some fur and satin in my final design? Fur could be added as a trim as stated above, and satin could be the main fabric of the dress. Silk satin would work well as it has good lustre and drapes well. Silk satin is strong and absorbent which are useful properties for an evening dress.

8. Are there any other construction techniques that could improve the look of its dress? Using a concealed zip as a closure would be neater and give a sleeker look for the Met Gala. Also, a lining will help the dress to drape better.

Conclusions

1. After evaluating the responses from the fashion and textiles expert, I have decided to add 3D flowers onto my final design. I will attach them individually using invisible thread. I will use bigger, dark blue flowers at the bottom of the dress and they will gradually become smaller and a lighter blue colour as they go up the dress. This will create an interesting design and an ombre effect which will be suitable for the Met Gala.

2. In response to my second questions I have decided to use a Jaycotts pattern for my final design. Vogue Sewing Pattern 2010 Evening Dress in style B is the sewing pattern I have chosen. It is a halter neck design, this will be suitable for the Met Gala.

3. In response to my third question I have decided to create an ombre effect in my final design by going from large dark blue flowers at the bottom of the dress to lighter blue, smaller flowers as they go further up the dress. I have also made the full dress in an ombre effect. The bottom of the dress is a dark, forest green going into a baby blue and the very top of the dress is a dark royal blue colour. This will be suitable for the Met Gala.

4. In response to my fourth question I have decided to use both royal blue and green colours for my final dress design. I have decided to use a dark forest green at the bottom of the dress into a lighter green using an ombre effect. The dress will then go into a baby blue and gradually into a darker royal blue at the top of the dress. This will be a suitable design for the Met Gala.

5. Following my fifth question I have decided to use fur in my final design at the very bottom as a trim along the hem of the dress as this will weigh down the train of the dress and make it drape nicely which is suitable for the Met Gala.

6. From the response to my sixth question I have decided to attach sequins in my final design using invisible thread. I will add them to the centre of the flowers and the to back of the dress. Using sequins will elevate the dress and this is suitable for the Met Gala as it will be more eye-catching.

7. From the response to my seventh question I have decided to use fur and satin. I will use silk satin as the main fabric of the dress as it has good lustre and will look aesthetically pleasing for the Met Gala. I will use fur at the bottom of the dress along the hemline.

8. Finally, in response to my last question I have decided to use a concealed zip for a cleaner and more finished look. I have also decided to use inner lining as it will give the dress a better shape and this is suitable for the Met Gala as the dress will look good quality.

1c The solution (18 marks)

Present an appropriate solution (4 marks)

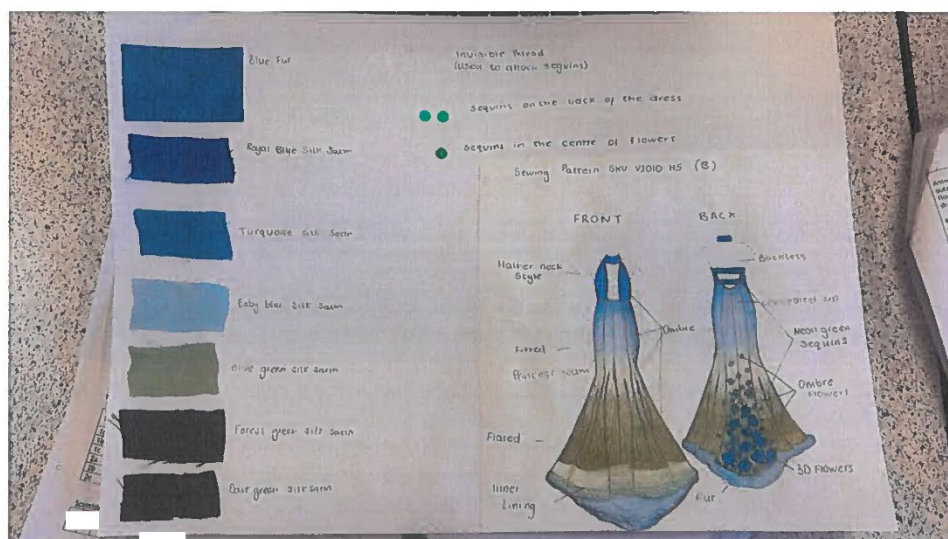
You could present your solution as a description, a labelled diagram, a computer-generated image, samples of fabrics and components to be used with written commentary or a combination of these.

You must provide enough detail to allow your solution to be clearly visualised.

Present your relevant evidence below – you may attach additional pages if needed

https://jaycotts.co.uk/collections/patterns_dresses/products/sewing-pattern-voguev2010

Sewing Pattern B



Justify the features of your solution (14 marks)

You must identify and explain seven features of your solution which refer to the findings from your investigations.

Your identified features must include:

- ◆ at least two design features of the solution
- ◆ at least two properties or characteristics of the textiles
- ◆ at least two construction techniques

Features	Explanation
<p>Design features of the solution (minimum of 2)</p>	<p>3D Flowers - I've decided to add 3D ombre blue flowers on the bottom of the back of the dress. The flowers on the very bottom and dark blue and gradually get lighter the further up they go. Loewe was a very popular designer among the teenagers who answered the questionnaire. This will be suitable as in their 2024 outfit there was ombre therefore I have chosen to incorporate some ombre in my final design.</p> <p>Sequins - I've decided to add neon green sequins to the centre of the flowers and to the straps on the back of the dress, as sequins were a popular design feature in investigation 2 the Questionnaire to teenagers. I am using invisible thread to attach the sequins on to the dress therefore it will have a more finished look. Sequins will make the dress look more interesting which is suitable for the Met Gala.</p>
<p>Properties and characteristics of the textiles (minimum of 2)</p>	<p>Silk Satin Drapes well - I've decided to use Silk Satin for the fabric of the dress as it was the most popular chosen by teenagers un investigation 2, The Questionnaire. Therefore, this will be a suitable fabric as the dress will look aesthetic and it will hang nicely which is necessary for the Met Gala.</p> <p>Silk Satin Good lustre - I've decided to use Silk Satin for the dress, as Silk Satin was recommended from Investigation 3 by the expert. Therefore, this will be a suitable fabric as the dress will look expensive and look good for the Met Gala.</p>
<p>Construction/ finishing techniques (minimum of 2)</p>	<p>Concealed Zip - I've decided to add a concealed zip on to the back of my dress, as suggested in investigation 3 by the expert, to give it a clean finish as it is not visible. The hidden zip will be good for the Met Gala as it will not be chunky or take away from the design of the dress.</p> <p>Inner Lining - I've decided to use a light green inner lining as suggested in investigation 3 by the expert, for the dress. Therefore the dress looks and feels more expensive which will be suitable for the Met Gala. The lining will also add a nice feature if the inside of the dress is seen at any point.</p> <p>Princess Seam - I've decided to add a princess seam to my dress as it will give it a fitted look and improve aesthetic qualities as it will shape the dress nicely to the body. Princess seams are easy to fit and comfortable to wear whilst also shaping the dress.</p> <p>Halter neck - I've decided to do a halter neck style dress. After seeing a halter neck style dress by Loewe worn at the Met Gala I added it as an option in my second investigation, the Questionnaire. This is suitable as Loewe in investigation 1 was the most popular among teenagers. Therefore, I decided to incorporate the halter neck style for my final idea.</p>

Stage 2: testing and evaluation (10 marks)

2a Carry out a test (3 marks)

You must produce evidence of carrying out a test to evaluate the suitability of your solution, using one investigative technique.

Your test must include:

- ◆ details of the research technique and source(s) used
- ◆ the results of your research
- ◆ the main points from your research that you will use to evaluate your solution

Aim What information will you collect?	Technique How will you collect the information?	Source Where will you find the information?
To find out from teenagers how suitable my design is for the Met Gala.	Sensory Test/ Ratings Test	I will ask 6 teenagers to evaluate my final design.

You can present evidence from your test in a variety of ways, such as a written report, graph, chart, table, notes from an interview, photographs or any other relevant format.

2b Gather relevant information on the suitability of the design (4 marks)

Present your evidence below – you can attach additional pages if needed

Sensory Test - Ratings Test

Aim: To find out from teenagers how suitable my design is for the Met Gala.

Sensory Quality	Teenager 1	Teenager 2	Teenager 3	Teenager 4	Teenager 5	Teenager 6
Concealed Zip	1	2	1	1	1	2
Halter Neck Design	1	2	2	1	2	3
Colour of Fabric	2	1	1	1	1	2
Fur Fabric	1	1	3	1	3	3
Ombre effect	1	2	3	3	1	2
Sequins	2	3	1	2	1	1
3D Flowers	1	1	3	1	1	1
Overall Design	1	1	2	1	1	2
COMMENTS	So Stunning!	WOW!	Pretty	FABULOUS!	Beautiful	It was good

KEY: 1 = Very Good 2 = Good 3 = Average 4 = Bad 5 = Very Bad

CONCLUSIONS

- 4/6 teenagers who completed the sensory test said the concealed zip was really good. 2/6 teenagers said the concealed zip was good, therefore I have met the brief because the concealed zip is suitable for the Met Gala.
- 2/6 teenagers said the halter neck design was really good. 3/6 teenagers said the halter neck design was good. 1/6 teenagers said the halter neck design was average, therefore I could improve the style of dress.
- 4/6 teenagers said the colour of the fabric was really good. 2/6 teenagers said the colour of the fabric was good, therefore I have met the brief because the colours were suitable for the Met Gala.
- 3/6 teenagers said the fur fabric was really good. 3/6 teenagers said the fur fabric was good therefore I have met the brief because the fur fabric is suitable on the trim of the dress for the Met Gala.
- 2/6 teenagers said the ombre effect was really good. 2/6 teenagers said the ombre effect was good. 2/6 teenagers said the ombre effect was average, therefore I could've chosen a different design on the dress for the Met Gala.
- 3/6 teenagers said the sequins were good. 2/6 teenagers said the sequins were good. 1/6 teenagers said the sequins were average, therefore I could have changed the positions of the sequins to improve my final dress designed for the Met Gala.
- 5/6 teenagers said the 3D flowers were very good. 1/6 teenagers said the 3D flowers were good, therefore I have met the brief because the 3D flowers were suitable on the dress designed for the Met Gala.
- 4/6 teenagers said the overall design was really good. 2/6 teenagers said the overall design was good, therefore I have met the brief for a suitable decorative fashion item designed to wear at the Met Gala.

2c Evaluation of the final solution (3 marks)

You must evaluate your solution, with reference to the brief you selected and based on findings from your testing.

Evaluation**Colour**

I found that 4/6 teenagers who completed the sensory test said the colours of the dress were really good, and 2/6 teenagers said the colours were good. The colours I chose were green and blue to create an ombre effect and blue 3D flowers. This is suitable as I think they went together very well especially in the ombre design; therefore, the colour was successful and I have met the brief of a decorative fashion item to be worn at the Met Gala.

Fur Fabric

I found that 3/6 teenagers who completed the sensory test said the fur fabric on the dress was really good, and 3/6 said the fur fabric was good. I added the blue fur fabric onto the hemline of the dress which was suitable as fur had been worn at the Met Gala by Kim Kardashian in investigation 1. It looks very luxurious and adds an extra feature therefore I have met the brief for a decorative fabric item to be worn to the Met Gala.

3D Flowers

I found that 5/6 teenagers who completed the sensory test said the decorative 3D flowers on the dress were really good, while 1/6 teenagers said the 3D flowers were good. I added the flowers at the back of the dress with bigger, more noticeable flowers going up into smaller flowers, which looks really eye catching for the Met Gala. Therefore, I have met the brief of a decorative fashion item suitable to wear at the Met Gala.

Concealed Zip

I found that 4/6 teenagers who completed the sensory test said the concealed zip on the dress was really good, while 2/6 said the concealed zip was good. The concealed zip was suitable as it blends into the dress nicely leaving a good finish, therefore I have met the brief of a decorative fashion item that could be worn to the Met Gala.

Sequins

I found that 3/6 teenagers who completed the sensory test said the sequins on the dress were really good, 2/6 teenagers said the sequins were good and 1/6 teenagers said the sequins was average, therefore I feel confident my decoration of sequins worked well for the Met Gala and to meet the brief of a suitable decorative fashion item for the Met Gala.

Blue Fur

Royal Blue Silk Satin

Turquoise silk Satin

Baby blue silk Satin

olive green silk satin

Forest green silk satin

Dark green silk satin

invisible Thread
(Used to attach sequins)

sequins on the back of the dress

sequins in the centre of flowers

Sewing Pattern SKV V2010 H5 (B)

FRONT

BACK

Halter neck Style

Backless

Concealed zip

Neon green sequins

Ombre flowers

3D flowers

Fur

Inner Lining

Flared

Fitted

Princess seam

Ombre