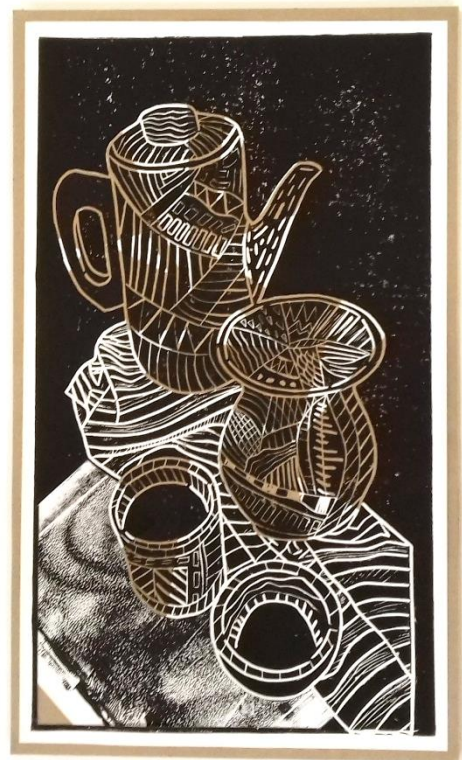


Candidate 3 – Still Life Print



Still Life Print

Process	10/10
	28/30
Skills	22/25
	23/25
Sub-total	83/90
Evaluation	7/10
TOTAL	90/100



OUTCOME

National 5 Art and Design Evaluation		Expressive portfolio	
Candidate name:		Candidate number:	
Centre number:			
Instructions to candidates			
<p>You should reflect on and evaluate the creative process you followed when working through your Expressive portfolio. In your evaluation give justified personal opinions on:</p> <ul style="list-style-type: none"> ◆ the decisions you made when working through your Portfolio; ◆ the effectiveness of the visual qualities of your Portfolio, referring to your theme/stimulus. <p style="text-align: right;">(10 marks)</p>			
<p>I am very interested in adding pattern to make my work more unique and unusual. I used the cover of my class sketchbook as a background detail in my work as I liked the contrast between the traditional still life objects and the bold and quite graphic pattern.</p> <p>I experimented with a range of media and technique for my single studies. I prefer quite a linear look, and didn't feel I could capture that with oil pastel. I found this media difficult to control and my work lacked the detail I wanted to capture.</p> <p>In terms of colour palette I have used mainly monochrome but I do have some colour pieces which stand out against the black and white. I think the lack of colour draws your attention more to the shapes, forms and patterns.</p> <p>For the development sheet, I decided to make the case the mail point of my development work. I did this because I felt that because it is the largest object I could build around this. The other objects that I placed next to the vase are small so this draws your eyes go towards the vase and I liked the contrast of scale and proportion.</p> <p>I enjoyed mixing techniques and eventually began to incorporate the pattern not only in to the background, but into the objects themselves. I feel this makes my work look modern and contemporary and almost has a hint of African art to it.</p> <p>I created my composition studies using oil pencil, coloured pencil, pencil, mono print and fine line pen. I considered both vertical and horizontal placements.</p> <p>I used a black fine line pen to create pointillism on the bowl and then I used a fine line pen to create a line drawing of the vase. I want to create a real contrast in my work, but not using the pen as I don't feel that captures an expressive enough look.</p> <p>I focused quite heavily on capturing a linear look. I liked the freedom of using continuous line, but wanted to work in a tighter more controlled way. I wanted to show the patterns clearly and to their best.</p> <p>For the mono print development idea I added pattern onto the kettle, pear, apple and jug. I then added some black into of the patterns, so it wasn't all white. I feel this really works and is detailed and bold approach to still life. I feel that I want to explore more printing techniques like lino as I move towards my outcome.</p> <p>For my final piece I made the vase and pots as my focal point for the final piece. The striped fabric anchors the composition and gives a sense of surface. I feel this is important due to the lack of background detail. I very much enjoyed cutting the lino and added a wide variety and scale of patterns. I tried to vary this within each object to give a sense of uniqueness. I collaged two prints together in white and brown to create an abstract and eye-catching outcome.</p> <p>I would like to develop more printing skills and would be interested in trying etching or lithograph. I also would maybe vary the scale of patterns I used and make my work even more complex. I could also add a background.</p>			

National 5 Expressive Portfolio Commentary		
Portfolio: Still Life Print		
Section 1 - Expressive Portfolio - Process		
Producing relevant 2D/3D analytical drawings, studies and investigative research appropriate to the selected theme/stimulus		
Limited relevance		The candidate makes a straightforward selection of relevant still life objects to draw, along with some examples of geometric pattern. The candidate did not identify a theme but their outcome combines traditional still life objects with pattern and their research is relevant to this approach, allowing them to gain full marks.
Partially relevant		
Relevant		
Highly relevant	10/10	
Demonstrating a single line of development, showing visual continuity and the refinement of one idea and producing a final piece		
Limited effectiveness		A highly effective single line of development was presented. The candidate used colour in their investigative drawings but then refined the idea towards a monochromatic outcome. The idea is gradually resolved through a series of sketchy compositional studies and media experiments towards the printed outcome. A stronger compositional connection with the outcome could have been shown in the development, which is the reason this element achieved a mark in the middle of the highly effective range.
Partially effective		
Effective		
Highly effective	28/30	
Section 2 - Expressive Portfolio - Skills		
Creatively using a selection of materials, techniques and/or technology in response to the theme/stimulus		
Limited effectiveness		The candidate selected a number of materials and techniques. Although there is some inconsistency, they have generally shown a highly effective use of these in their investigation studies and in the sketchy and fluid style of their developments. The outcome is a mixed media print which is highly effective and shows very good control of the techniques chosen. This allowed the candidate to achieve marks in the middle of the highly effective range.
Partially effective		
Effective		
Highly effective	22/25	
Creatively using appropriate visual elements and expressive effects (eg composition, lighting, viewpoint, mood and atmosphere) in response to the theme/stimulus		
Limited effectiveness		The candidate has shown understanding of how to use a range of visual elements, with a particular emphasis on line, shape and pattern. The candidate successfully combines the monochromatic colour palette with the other elements to communicate an African print aesthetic. The use of negative space becomes particularly effective in the final piece as a contrast to the pattern and shape aspects. Again, there is some inconsistency with quality throughout the investigation and development which places it in the middle of the highly effect range.
Partially effective		
Effective		
Highly effective	23/25	
Section 3 - Expressive Portfolio - Evaluation		
Giving justified personal opinions on the decisions made when working through their expressive portfolio and evaluating the effectiveness of the visual qualities of their expressive portfolio with reference to their theme/stimulus		
Little or no justification		The candidate has produced a series of points which outline the steps they went though. Many of the points made are evaluative, for example where the candidate reflects on the success of their media handling techniques. Some points are well justified, for instance where they explain the effects of their decisions. However, it is not consistent throughout and there are some points that are simply descriptive in nature. While it is an effective response, this evaluation lacks the
Simple justification/critical evaluation		
Some justification and critical evaluation	7/10	

Justification showing focused critical evaluation		consistent focus and in-depth comments that would place it in the top marks range.
---	--	--