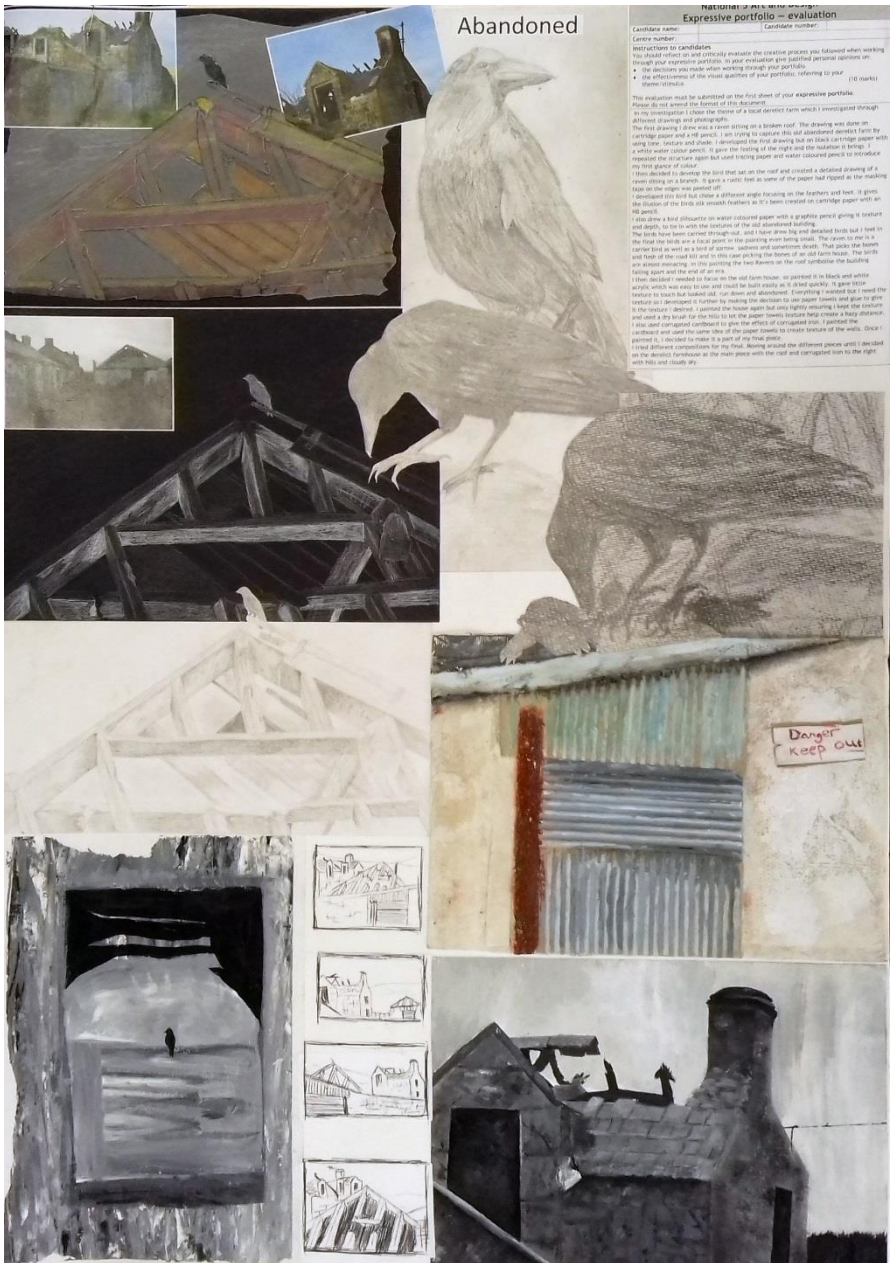
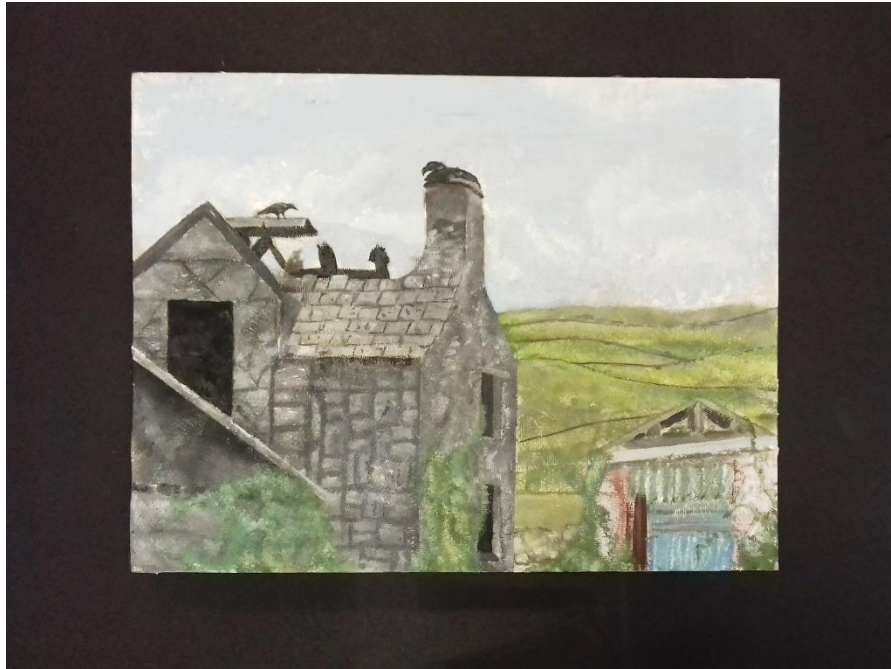


Candidate 2 - Abandoned

Abandoned



Process	10/10
	30/30
Skills	23/25
	22/25
Sub-total	85/90
Evaluation	9/10
TOTAL	94/100



National 5 Art and Design Evaluation		Expressive portfolio	
Candidate name:		Candidate number:	
Centre number:			
Instructions to candidates			
<p>You should reflect on and evaluate the creative process you followed when working through your Expressive portfolio. In your evaluation give justified personal opinions on:</p> <ul style="list-style-type: none"> ◆ the decisions you made when working through your Portfolio; ◆ the effectiveness of the visual qualities of your Portfolio, referring to your theme/stimulus. <p style="text-align: right;">(10 marks)</p>			
<p>In my investigation I chose the theme of a local derelict farm which I investigated through different drawings and photographs.</p> <p>The first drawing I drew was a raven sitting on a broken roof. The drawing was done on cartridge paper and a HB pencil. I am trying to capture this old abandoned derelict farm by using tone, texture and shade. I developed the first drawing but on black cartridge paper with a white water colour pencil. It gave the feeling of the night and the isolation it brings. I repeated the structure again but used tracing paper and water coloured pencil to introduce my first glance of colour.</p> <p>I then decided to develop the bird that sat on the roof and created a detailed drawing of a raven sitting on a branch. It gave a rustic feel as some of the paper had ripped as the masking tape on the edges was peeled off.</p> <p>I developed this bird but chose a different angle focusing on the feathers and feet. It gives the illusion of the birds silk smooth feathers as it's been created on cartridge paper with an HB pencil.</p> <p>I also drew a bird silhouette on water coloured paper with a graphite pencil giving it texture and depth, to tie in with the textures of the old abandoned building.</p> <p>The birds have been carried through-out, and I have drew big and detailed birds but I feel in the final the birds are a focal point in the painting even being small. The raven to me is a carrier bird as well as a bird of sorrow, sadness and sometimes death. That picks the bones and flesh of the road kill and in this case picking the bones of an old farm house. The birds are almost menacing. In this painting the two Ravens on the roof symbolise the building falling apart and the end of an era.</p> <p>I then decided I needed to focus on the old farm house, so painted it in black and white acrylic which was easy to use and could be built easily as it dried quickly. It gave little texture to touch but looked old, run down and abandoned. Everything I wanted but I need the texture so I developed it further by making the decision to use paper towels and glue to give it the texture I desired. I painted the house again but only lightly ensuring I kept the texture and used a dry brush for the hills to let the paper towels texture help create a hazy distance. I also used corrugated cardboard to give the effect of corrugated iron. I painted the cardboard and used the same idea of the paper towels to create texture of the walls. Once I painted it, I decided to make it a part of my final piece.</p> <p>I tried different compositions for my final. Moving around the different pieces until I decided on the derelict farmhouse as the main piece with the roof and corrugated iron to the right with hills and cloudy sky.</p>			

National 5 Expressive Portfolio Commentary		
Portfolio: Abandoned		
Section 1 - Expressive Portfolio - Process		
Producing relevant 2D/3D analytical drawings, studies and investigative research appropriate to the selected theme/stimulus		
Limited relevance		The candidate has presented photographs of an abandoned building along with studies of ravens that are appropriate and relate well to the theme of their portfolio. The work is highly relevant and full marks have been awarded.
Partially relevant		
Relevant		
Highly relevant	10/10	
Demonstrating a single line of development, showing visual continuity and the refinement of one idea and producing a final piece		
Limited effectiveness		The candidate has produced a single line of enquiry appropriate to their landscape approach which shows visual continuity. To refine their idea, they experimented with compositions looking at the location from different viewpoints. Details of the scene are explored using different media techniques, including mixed media. This culminates in an outcome which brings these elements together. Full marks have been awarded for this thorough, highly effective process.
Partially effective		
Effective		
Highly effective	30/30	
Section 2 - Expressive Portfolio - Skills		
Creatively using a selection of materials, techniques and/or technology in response to the theme/stimulus		
Limited effectiveness		The candidate has used a wide variety of materials and has demonstrated skill in media handling to achieve expressive effects. While highly effective, the media handling in some areas of the final outcome are slightly less assured than in much of the development work. This places it in the middle of this marks range, rather than at the top.
Partially effective		
Effective		
Highly effective	23/25	
Creatively using appropriate visual elements and expressive effects (eg composition, lighting, viewpoint, mood and atmosphere) in response to the theme/stimulus		
Limited effectiveness		The candidate has explored a number of visual elements and have shown a high degree of skills throughout their development studies and within their final outcome. They have used composition and viewpoint in a creative way to create a strong sense of mood and atmosphere. However, their final outcome lacks some of the skill in using the visual elements demonstrated in their developments, particularly with regard to tone and texture. This meant that this element achieved a mark in the middle of the highly effective range.
Partially effective		
Effective		
Highly effective	22/25	
Section 3 - Expressive Portfolio - Evaluation		
Giving justified personal opinions on the decisions made when working through their expressive portfolio and evaluating the effectiveness of the visual qualities of their expressive portfolio with reference to their theme/stimulus		
Little or no justification		The candidate has produced a really personal evaluation which gives insights into the symbolic nature of the subject matter. Their creative journey is described in some detail, however, the comments on the process and use of materials are quite narrative. The candidate has missed some opportunities for evaluation, such as giving opinions on the effectiveness of their work. For this reason, it was placed in the highest marks range but did not achieve full marks.
Simple justification/ critical evaluation		
Some justification and critical evaluation		
Justification showing focused critical evaluation	9/10	