
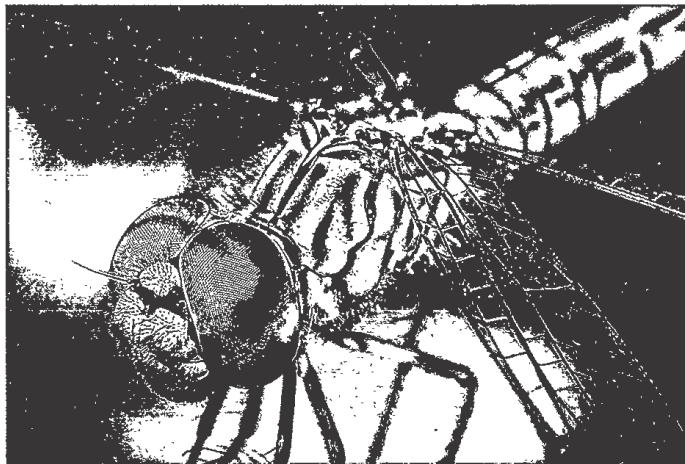


Candidate 3 evidence

		MARKS	DO NOT WRITE IN THIS MARGIN
SECTION 1 — MULTIPLE CHOICE — 10 marks			
Attempt ALL questions			
Tick (✓) one box in each question			
1.	A photographer wants to capture an image with visible grain for creative reasons. Which camera control would be adjusted to create this effect?	1	
	<input type="checkbox"/> White balance		
	<input type="checkbox"/> EV		
	<input type="checkbox"/> Shutter speed		
	<input checked="" type="checkbox"/> ISO		
2.	Which lighting technique did the photographer use to achieve this image?	1	
			
	<input type="checkbox"/> Hard lighting		
	<input checked="" type="checkbox"/> Low key lighting		
	<input type="checkbox"/> Rim lighting		
	<input type="checkbox"/> Contre-jour lighting		

3. Which lens did the photographer use to take this image?

MARKS | DO NOT
1 | WRITE IN
THIS
MARGIN



- Fisheye
- Macro
- Standard
- Wide angle

4. A DSLR camera is set to aperture priority mode.
Which row in the table is correct?

1

	Selected by the photographer	Set automatically by the camera
<input type="checkbox"/>	Shutter speed and aperture	
<input type="checkbox"/>		Shutter speed and aperture
<input checked="" type="checkbox"/>	Aperture	Shutter speed
<input type="checkbox"/>	Shutter speed	Aperture

MARKS
DO NOT
WRITE IN
THIS
MARGIN

5. A photographer using a DSLR camera in manual mode changes to a faster shutter speed.

If the lighting conditions stay the same, which of the following adjustments would ensure that the exposure is unchanged?

1

- Decrease the EV number
- Close down the aperture
- Increase the ISO number
- Use a neutral density filter

6. The photographer wanted to avoid specular reflections in this image.

Which one of the following has the photographer used to achieve this?

1



- Fill in flash
- Diffused light
- Hard light
- Light meter

MARKS DO NOT
WRITE IN
THIS
MARGIN

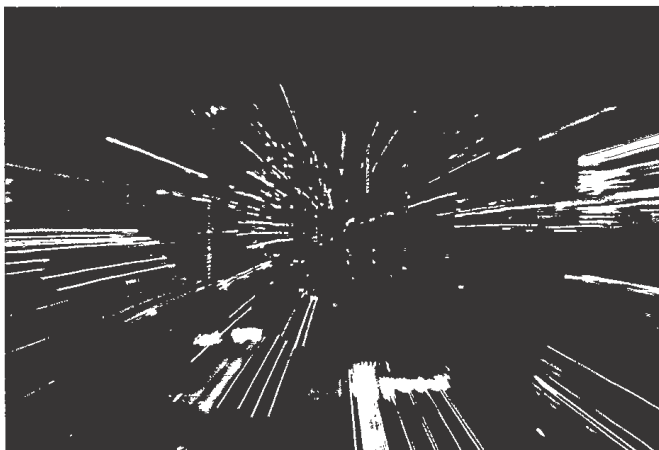
7. An image taken on a DSLR camera has been affected by motion blur.
Which one of the following has contributed to this?

1

- Slow shutter speed
 Incorrect focus
 Wide aperture
 High ISO setting

8. Which technique did the photographer use to achieve the creative effect in this image?

1



- Tilting
 Panning
 Auto-focusing
 Zooming

9. Which histogram represents the tonal range of this image?

MARKS DO NOT WRITE IN THIS MARGIN

1



10. What would be the result of a photographer increasing the f-number on their camera?

1

- Over-exposed image
- Wider aperture
- Less light entering the lens
- Shallower depth of field

MARKS
DO NOT
WRITE IN
THIS
MARGIN

SECTION 2 — ANALYSIS — 20 marks

Attempt BOTH questions

Refer to this image on the supplementary sheet when answering question 11.

*Still Life (2016) by Luiz Laercio*

11. (a) Identify a white balance setting which could have been used to capture this image.

Explain the effect on the image.

2

White balance setting Daylight

Effect ~~As~~ the daylight white balance setting adds a yellow tinge to an image which can be seen in the image as ~~it's a yellow~~ it has a yellow tinge in the overall image.

11. (continued)

- (b) Explain how three compositional techniques were used to create visual effect in this image.

MARKS
DO NOT
WRITE IN
THIS
MARGIN

3

Compositional technique 1 Full foreground

Explanation As the foreground has all of the objects visible, it makes the background the background is empty & highlighted, allowing the objects in the foreground to stand out.

Compositional technique 2 Eye level viewpoint

Explanation From the viewpoint the photographer has chosen it creates the idea you are sitting level with the table and the objects on it, as ^{full} ellipses can be seen on the bowls.

Compositional technique 3 Balanced composition

Explanation The large ~~sp~~ empty background and equal space on either side of the objects, allows the objects to be the center of the frame.

MARKS DO NOT WRITE IN THIS MARGIN

11. (continued)

- (c) Explain how three camera controls were used to capture this image. Do not include white balance in your answer.

3

* Camera control 1 ~~Use of a tripod~~

Explanation ~~Tripod has allowed the photographer to take a clear image with no visible camera shake which would of happened if the image was taken by holding the camera in hand.~~

Camera control 2 ~~Standard lens~~ ^{Fast shutter speed}

As daylight is the light source, a fast shutter (e.g. 1/18) will insure the image isn't over exposed.

* Explanation ~~The image has perfect lens focal length, with no stretching of any of the objects suggesting a standard lens has been used.~~ ^{As natural lighting has been used, a fast shutter speed}

Camera control 3 ^{closed} ~~Aperture~~

Explanation ~~A closed aperture has allowed a wide depth of field, getting all the objects in focus, and for ensuring enough not too~~ ^{example f. 18.}

11. (continued)

- (d) Explain how lighting techniques and lighting equipment were used to photograph this still life.

MARKS
DO NOT
WRITE IN
THIS
MARGIN

2

Daylight is the light source,
~~so a~~ suggesting a light
meter was used to determine
if the correct amount of light
was entering the camera.
As daylight is providing soft lighting, it has allowed
there to be no harsh
shadows from any of
the objects.
Diffuser may have been
used to stop there being
any solid blocks of light
where it wasn't wanted.

MARKS
DO NOT
WRITE IN
THIS
MARGIN

Refer to this image on the supplementary sheet when answering question 12.



New Brighton from *The Last Resort* series (1985) by Martin Parr

12. Discuss the **technical** and **creative** factors which the photographer would have considered when setting up this shot. 10

As the image seems to be taken from a low angle to be level with the boy, a tripod may have been used to steady the camera and insure there was no camera shake. Rule of thirds has created visual flow in the image as it separates the image into

MARKS
DO NOT
WRITE IN
THIS
MARGIN

12. (continued)

three areas.

Busy composition with a full foreground, mid ground and background creates ~~visual~~ attraction to the image as it adds interest as there is lots happening. Contrasting colours of the rubbish which is bright colours and white contrasts against the dark, mucky water, allowing the objects to stand out, making them more obvious.

Fast shutter speed ^(below 1/60) has allowed the image to be as if it's a moment captured in time as the people haven't come out blurry or moving.

Use of a closed aperture has meant the lighting ~~isn't~~ hasn't image hasn't been over exposed and

MARKS
DO NOT
WRITE IN
THIS
MARGIN

12. (continued)

allowed a wide depth of field to insure everything in the image is in focus, clear and sharp. Although the composition is busy it seems to be balanced as there is equal negative space in the image. ~~and it~~ Your eye is led around the image through the use of blue objects starting at, from the blue packaging in the water, to the boy (his t-shirt), to the tower, to the tray in the mid ground, to the child's shorts, up to leave the image in the sky. This ~~is~~ creates visual flow in the image and allows your eye to enter and ~~er~~ leave the image, leading

MARKS
DO NOT
WRITE IN
THIS
MARGIN

ADDITIONAL SPACE FOR ANSWERS

your eye around.
The framing of the image makes it visually appealing as the water in the ~~background~~ foreground and the sky in the background frames the people in the midground. Daylight white balance setting would allow the photographer to have kept the colours the correct colour, for like the blue sky, the setting would add a yellow tinge to ~~add~~ ensure it stayed its true colour. A high ISO allowed the image to be bright and have ~~little~~ ^{some} noise visible in the sky.

A shutter release button would mean the image could be taken quickly, in the moment with no camera shake.

ADDITIONAL SPACE FOR ANSWERS

MARKS | DO NOT
WRITE IN
THIS
MARGIN

* 11 c. ~~1/5~~ LOW ISO
Use of low ISO of possibly
100, has allowed the
image to have a darker
areas (on left) and
not have any visible
noise or grain in the
image.