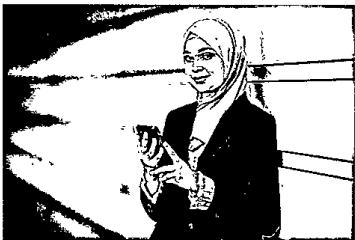
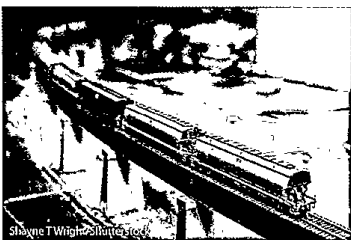

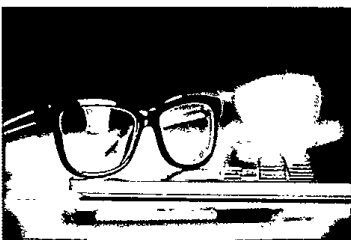


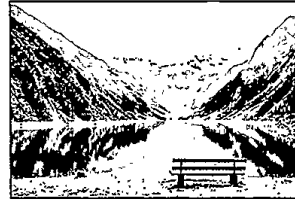
Candidate 3 evidence

SECTION 1 — MULTIPLE CHOICE — 10 marks		MARKS	DO NOT WRITE IN THIS MARGIN
Attempt ALL questions			
Tick (✓) one box in each question.			
1. Which image was taken using the highest f-number setting?		1	
			
<input type="checkbox"/>	<input type="checkbox"/>		
			
<input checked="" type="checkbox"/>	<input type="checkbox"/>		

MARKS

DO NOT
WRITE IN
THIS
MARGIN

2. The photographer took the following images using a setting that automatically captures multiple images at different exposures.



What is this setting called?

1

- ☒ Auto-bracketing
☐ Landscape mode
☐ Shutter priority
☐ White balance

3. Which of the following best represents a shutter speed of 1/2000 second?

1

☐☐☐☒

4. A photographer using a DSLR camera in manual mode adds a neutral density filter to their lens.

If the lighting conditions stay the same, which of the following adjustments would ensure that the exposure is unchanged?

1

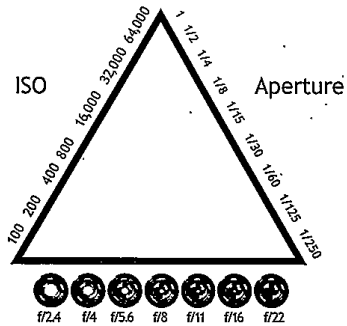
- ☐ Select a faster shutter speed
☒ Increase the ISO number
☐ Close down the aperture
☐ Decrease the EV number

5. Which diagram correctly illustrates the exposure triangle?

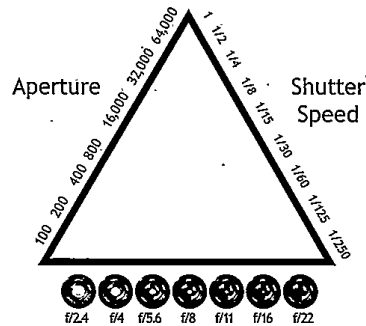
MARKS

1

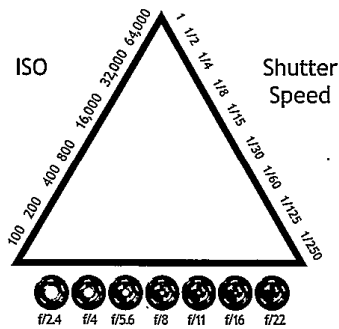
DO NOT
WRITE IN
THIS
MARGIN



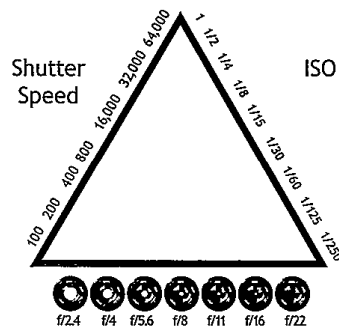
Shutter Speed



ISO



Aperture



Aperture



6. What information is represented in a histogram?

1

- ☒ Tonal range
- ☐ Digital noise
- ☐ File size
- ☐ Colour cast

MARKS

DO NOT WRITE IN THIS MARGIN

7. The photographer selected a white balance setting to accurately represent the colours in this scene.



Which white balance setting was used?

1

- ☐ Fluorescent
- ☐ Sunny
- ☐ Tungsten
- ☒ Cloudy

8. When diffusing incident light, the shadows will be more:

1

- ☐ Contrasted
- ☒ Softened
- ☐ Polarised
- ☐ Focused

MARKS

DO NOT
WRITE IN
THIS
MARGIN

9. A photographer is taking images of a landscape scene with mountains in the distance. They use a specific lens to make the mountains appear closer to the foreground than they actually are.

Which lens would give this effect?

1

- ☐ Macro
- ☐ Wide angle
- ☒ Telephoto
- ☐ Standard

10. The photographer took image 1, and then changed one camera control and applied one post-production enhancement to achieve image 2.



Image 1



Image 2

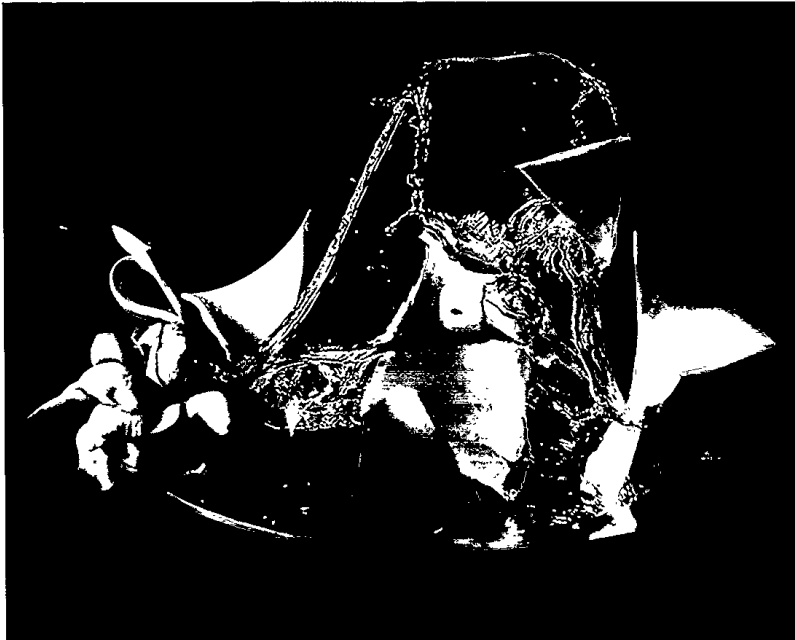
Which row in the table shows the two changes that the photographer made?

1

	Camera control	Post-production
<input checked="" type="checkbox"/>	Changed to a faster shutter speed	Increased the saturation
<input type="checkbox"/>	Selected a smaller aperture	Adjusted the white balance
<input type="checkbox"/>	Decreased the ISO number	Reduced the brightness
<input type="checkbox"/>	Raised the EV number to +2	Increased the contrast

SECTION 2 — ANALYSIS — 20 marks

Attempt BOTH questions

*New Orders 01 (2018) by Ori Gersht*

Refer to this image on the supplementary sheet when answering question 11.

11. (a) Identify **one** specific camera control the photographer could have used to capture this image.

Explain the effect of the camera control on this image.

2

Camera control Fast Shutter Speed

Explanation By using a fast shutter speed the photographer
could clearly capture the splash of water without
any motion blur.

11. (continued)

- (b) Identify three pieces of equipment, apart from a camera, which could have been used when taking this image.

Explain the effect of each piece of equipment on this image.

3

Equipment 1 Tripod

Explanation A tripod eliminates the potential of camera
shake from the photographers hands therefore
ensuring the image is clear.

Equipment 2 Shutter Button

Explanation A shutter button is used so the photographer
can take the image without touching the camera.
This further eliminates the potential of camera
shake and it also means the photographer can
ensure their set-up is correct.

Equipment 3 Diffuser

Explanation By using a diffuser the photographer
can soften the light. ~~which~~ This gives the image less
contrasting tones.

MARKS
DO NOT
WRITE IN
THIS
MARGIN

11. (continued)

- (c) Explain how the photographer has used three compositional techniques for creative effect in this image.

MARKS

DO NOT
WRITE IN
THIS
MARGIN

3

Compositional technique 1 Rule of thirds

Explanation The plate is positioned in the centre of the image. This draws the viewers attention directly in to the picture.

Compositional technique 2 Rule of thirds

Explanation Although the plate is in the centre the splash is off centre. By using rule of thirds the photographer has successfully added structure to their image.

Compositional technique 3 Leading lines

Explanation ~~All the bits of the broken vase~~ The splash of water creates a curving leading line. However the splash remains ^{like} a loop which effectively draws the viewers attention further and further into the picture, without breaking eye contact.

11. (continued)

- (d) Explain how the photographer has used subject matter to create mood and atmosphere in this image.

MARKS

DO NOT
WRITE IN
THIS
MARGIN

2

The broken vase has ^{it's} parts going everywhere in the image. This effectively creates a chaotic atmosphere as the viewer's eyes are drawn to multiple parts of the image.

The lack of subject matter in the background ^{and intense} creates a dark mood ~~as~~ as well as an isolating atmosphere as the objects appear to be surrounded by darkness.

By using a flower and water, connotations of peace, and a broken glass, connotations of danger, the photographer creates an uneasy ~~mood~~ atmosphere as the viewer is unsure of what to feel or the mood of the image.



For every minute you are angry you lose sixty seconds of happiness
(2005) by Julian Germain

Refer to this image on the supplementary sheet when answering question 12.

12. Discuss the technical and creative factors which the photographer would have considered when setting up this shot.

10

Technical
The photographer could have used the daylight white balance setting as the lighting appears to be natural, from a window, as seen in reflections. By ensuring the colour cast is what the photographer ^{sees}, he makes the viewer as if they are in the image themselves. The photographer has used a larger aperture as the background is blurred. By doing this he leads the viewers eyes to the foreground. This ~~also~~ ensures the

MARKS

DO NOT
WRITE IN
THIS
MARGIN

12. (continued)

viewer isn't visually overwhelmed which adds to the relaxing atmosphere.

The photographer would've used a lower ISO ~~4~~ so that the image is not grainy. The clearness of the image ~~add~~ ensures everything the photographer wants us to see is visible, adding to the visual impact.

The photographer has used a standard lens. This makes the viewer feel as though they are in the picture. By doing this it adds a relatability to the picture thus adding to the nostalgic atmosphere.

The photographer hasn't used a filter. The viewer sees exactly what the photographer sees, placing us in the image. This allows us to reflect on our own lives and experiences as we understand the meaning of the image.

The photographer has not used ~~flash~~ flash. This ensures there are not any harsh reflections. By doing this he softens the photo which highlights serene atmosphere to the photo.

MARKS
DO NOT
WRITE IN
THIS
MARGIN

12. (continued)

creative

By choosing the location of this shot to be at a kitchen table for dinner, the photographer ~~is~~ successfully emphasises the homely atmosphere in the picture.

The image is a candid shot as we see a man cooking in the background. This ~~adds to~~ makes the image look more natural and real. We, the viewer, ~~can~~ feel as though we are in the picture, ourselves.

The photographer has used a lot of browns and muted colours. This ensures the picture is not overwhelming visually which adds to the calming atmosphere of the picture.

By making the food the point of interest, the photographer has successfully created a comforting atmosphere. The food looks appealing and freshly made, as seen by the steam, which reminds the viewer of a comforting, homemade meal further adding to the homely atmosphere.

By making the depth of field smaller, the photographer is ensuring the viewer only takes in of the image what they need. This also adds to the relaxing atmosphere as we are not overwhelmed with subject matter. The background being ^{out of} focus also softens the image.

MARKS

DO NOT
WRITE IN
THIS
MARGIN

12. (continued)

The viewpoint of the image being low makes it seem as if we are sitting down to enjoy the meal. This creates a happy atmosphere as we imagine the enjoyment of having a family meal.

Most of the subject matter has a smooth, rounded shape such as the plate, teapot and the bowls.

~~The former~~ These softer shapes, and lack of sharp shapes, effectively remove any danger or intensity to the picture. This leaves an ^{image} ~~image~~ that feels soft and comforting as well as a feeling of safety.

There is a lot of wooden textures in this image such as the placemat, teapot and chairs. By using wood, the photographer reminds of nature. This natural tone adds to the calming atmosphere of the image. The wall of the kitchen is painted green. This also has connotations of nature. By using this the photographer has created a sense of tranquility within the picture which makes the viewer feel at rest.

There is a clock in the background however it is blurred. This reminds the viewer of losing track of time when you have fun. This also creates a timeless feel to the picture. By doing this the photographer has made the viewer feel at peace, allowing

12. (continued)

them to enjoy the picture. It also ~~also~~ lets us
reminisce about our own lives.

The food on the plate looks very basic. This adds
a sense of simplicity to the image and also reminds
us of comfort foods adding to the ~~very~~ homely
atmosphere of the picture.

MARKS

DO NOT
WRITE IN
THIS
MARGIN

[END OF QUESTION PAPER]