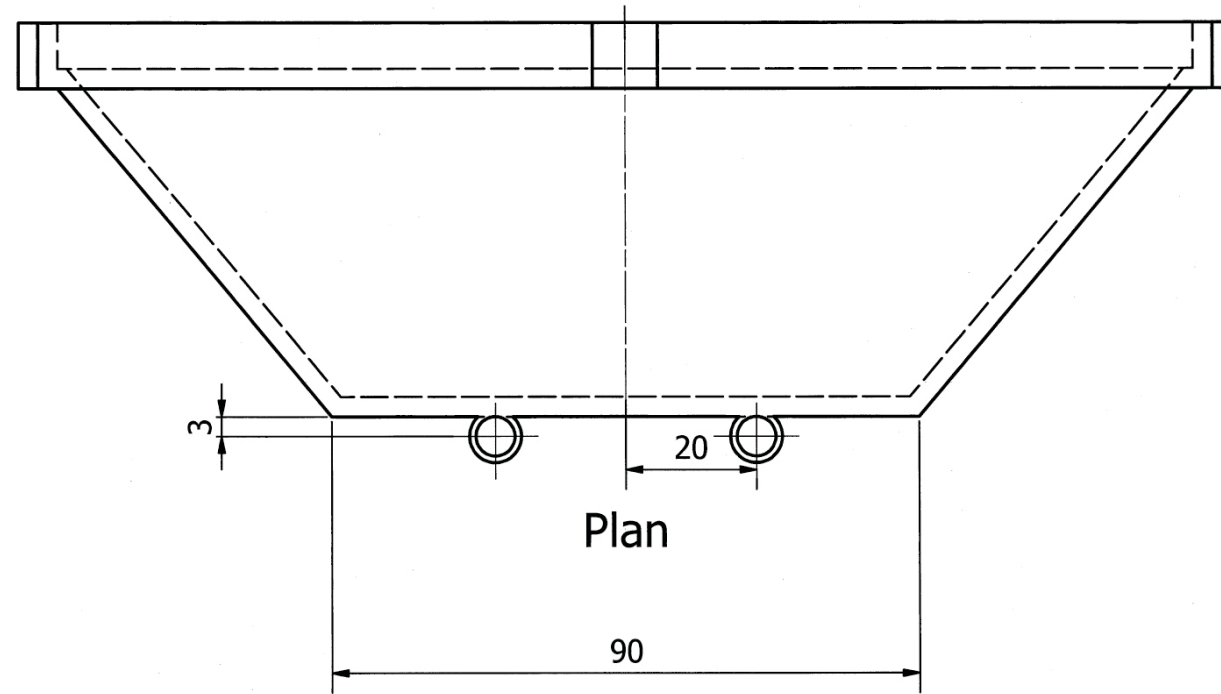
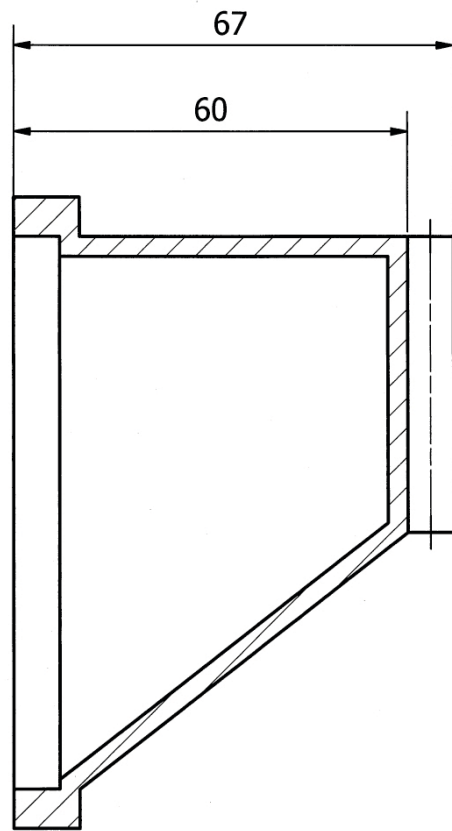


TASK 1a)i)

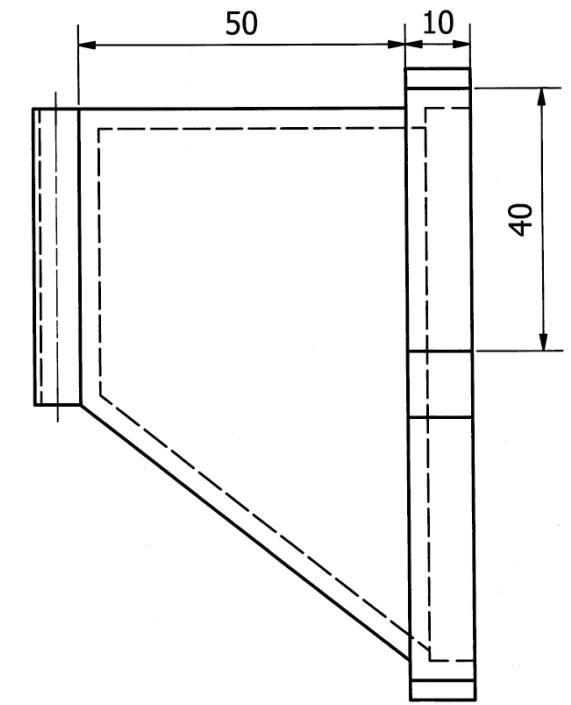
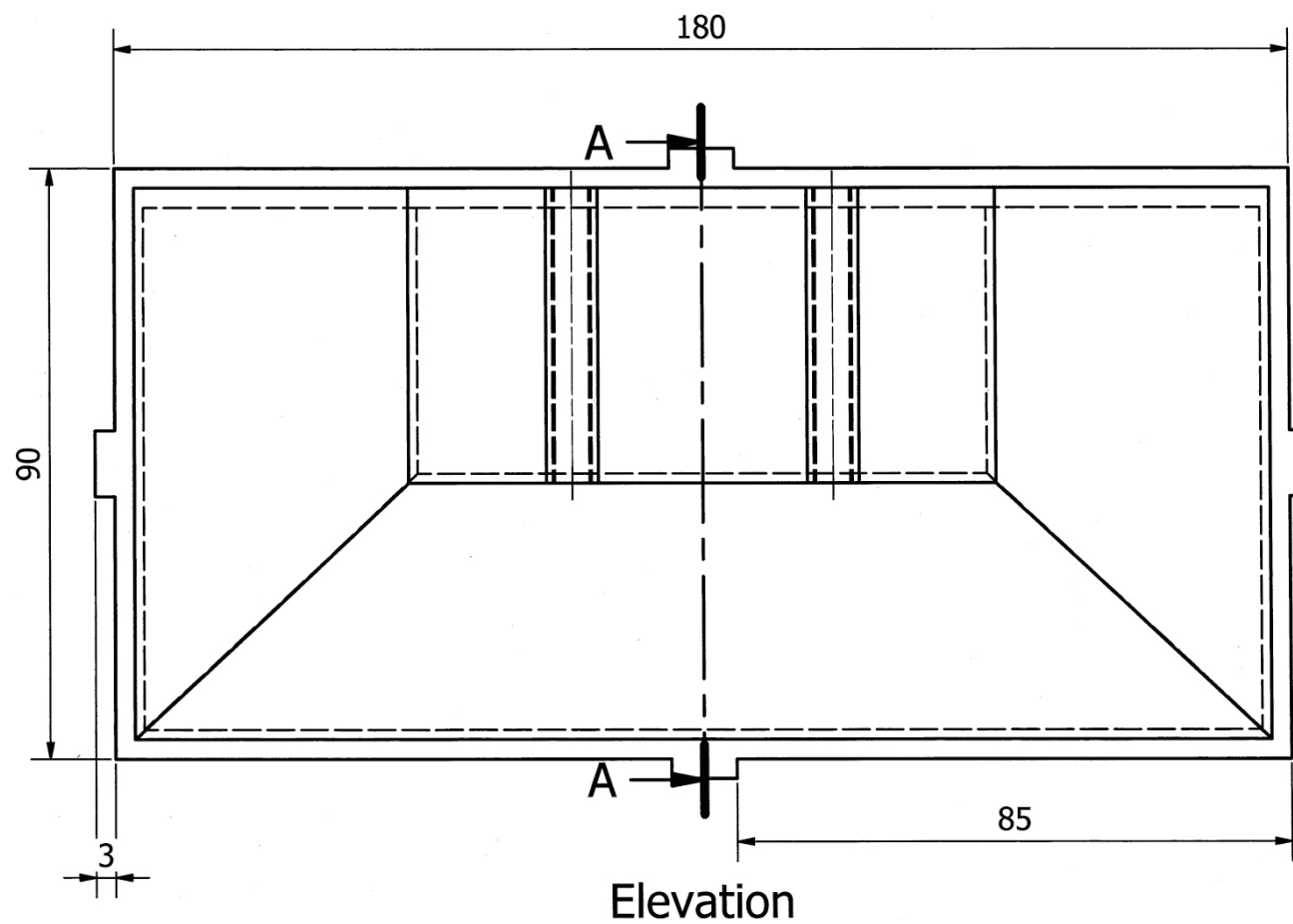
Wall Thickness
3mm



Drawn By: [REDACTED]
Date: 27/02/2019
Scale: 1:1
All sizes in mm
Tolerance: +/- 1mm
Drawing 1/2

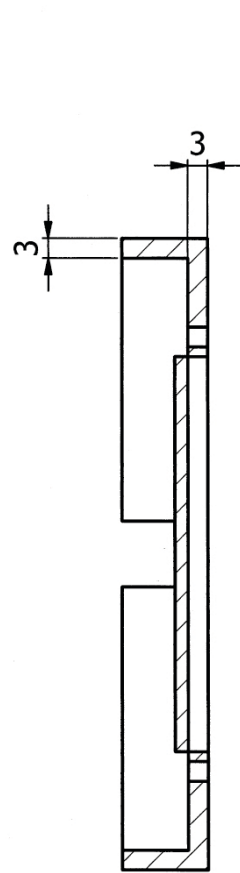
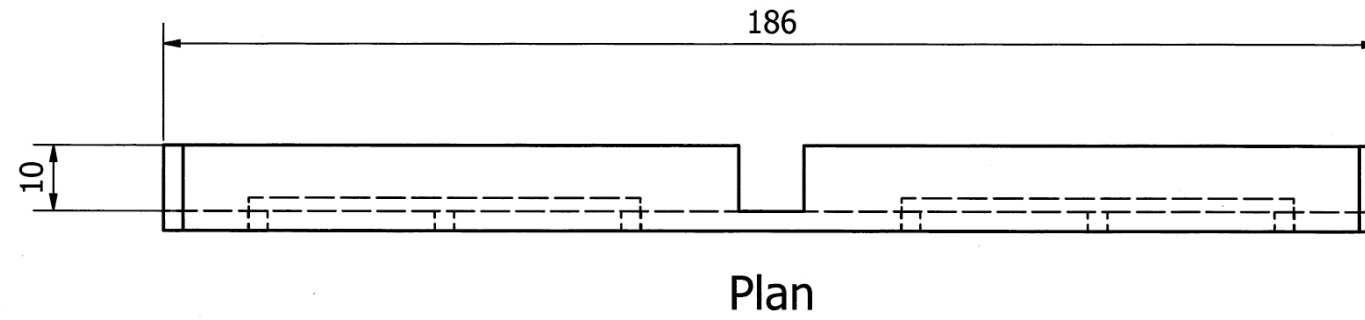


Sectional End Elevation

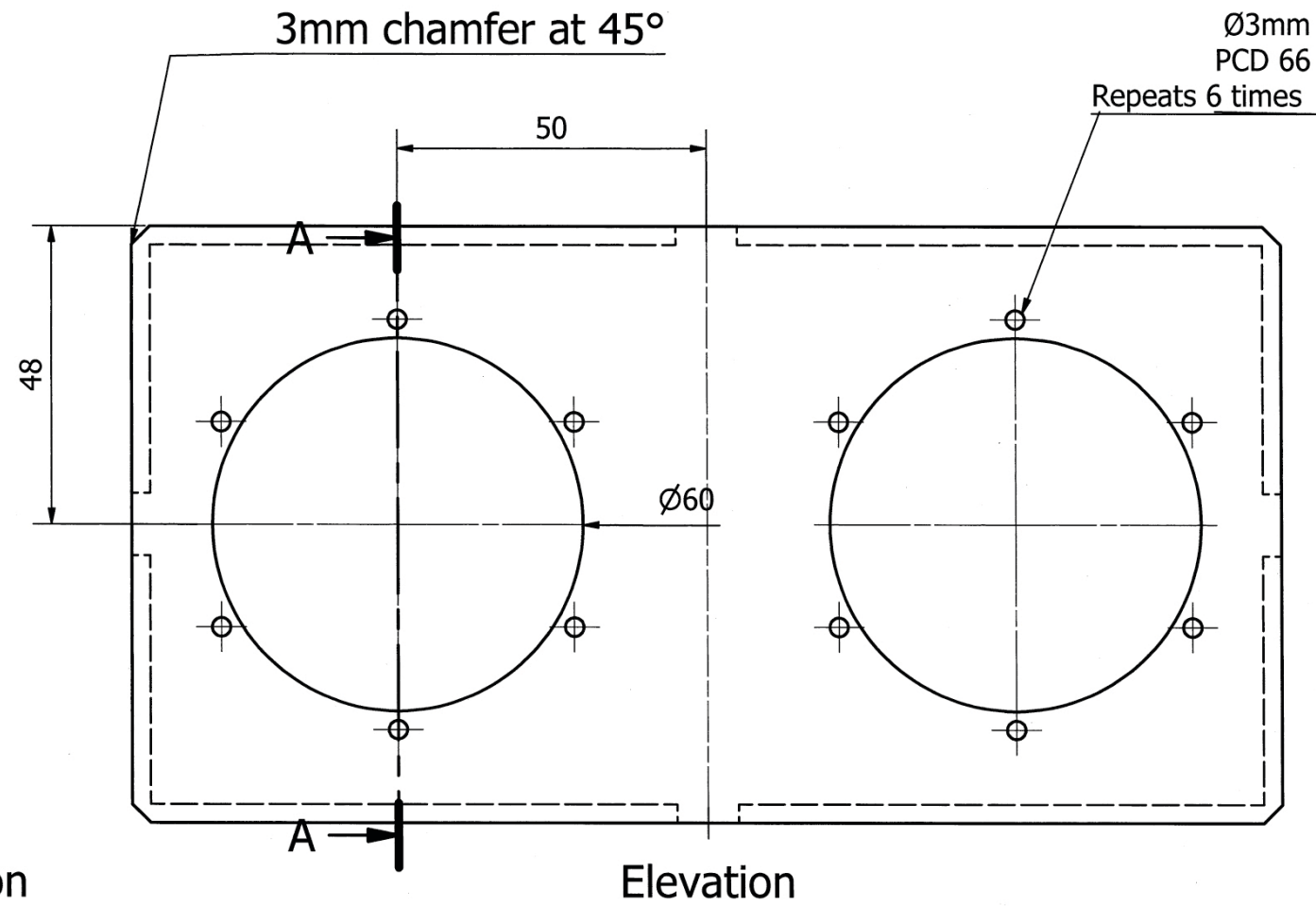


End Elevation

Task (a)ii)

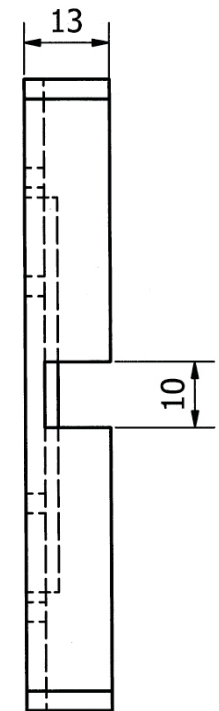


Sectional End Elevation



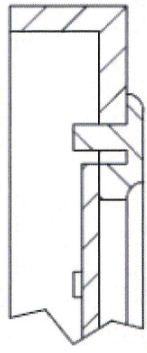
Elevation

Drawn By: XXXXXXXXXX
Date: 27/02/2019
Scale: 1:1
All sizes in mm
Tolerance: +/- 1mm
Drawing 2/2

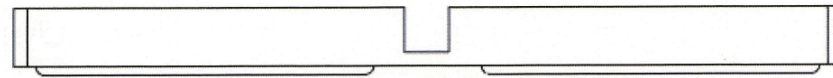


End Elevation

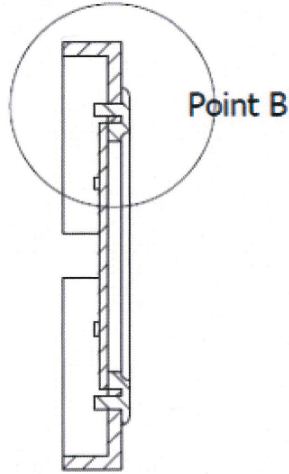
TASK 1b



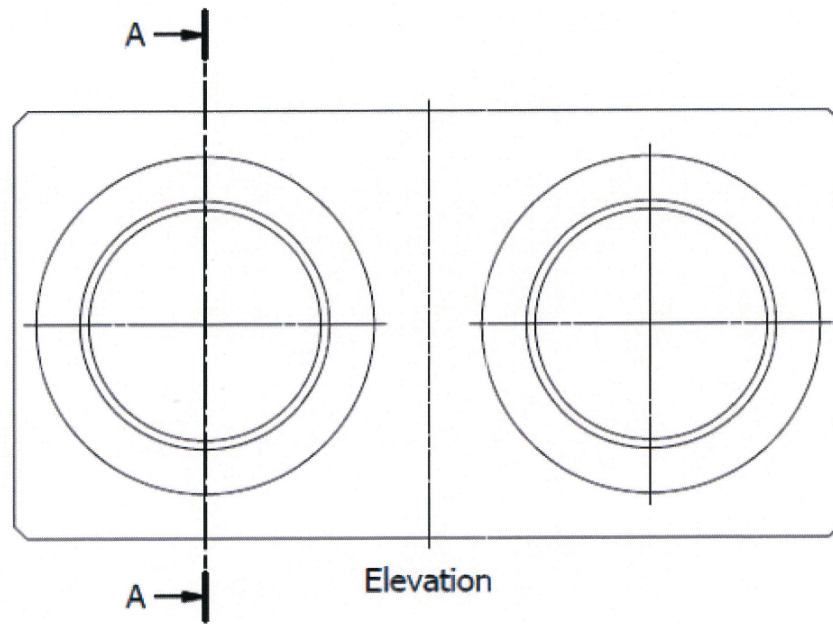
Enlarged Detail View
(Point B) (Scale 2:1)



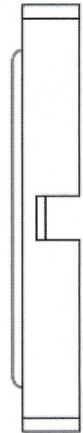
Plan



Sectional End Elevation

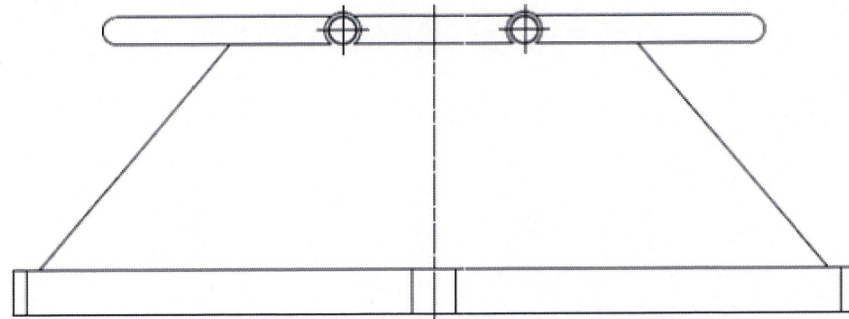


Elevation

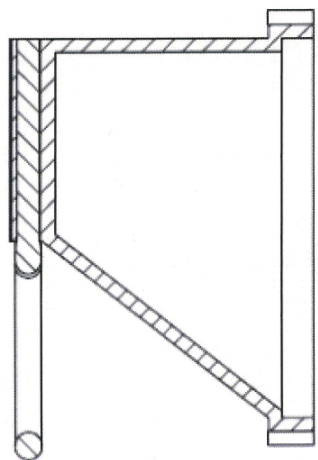


End Elevation

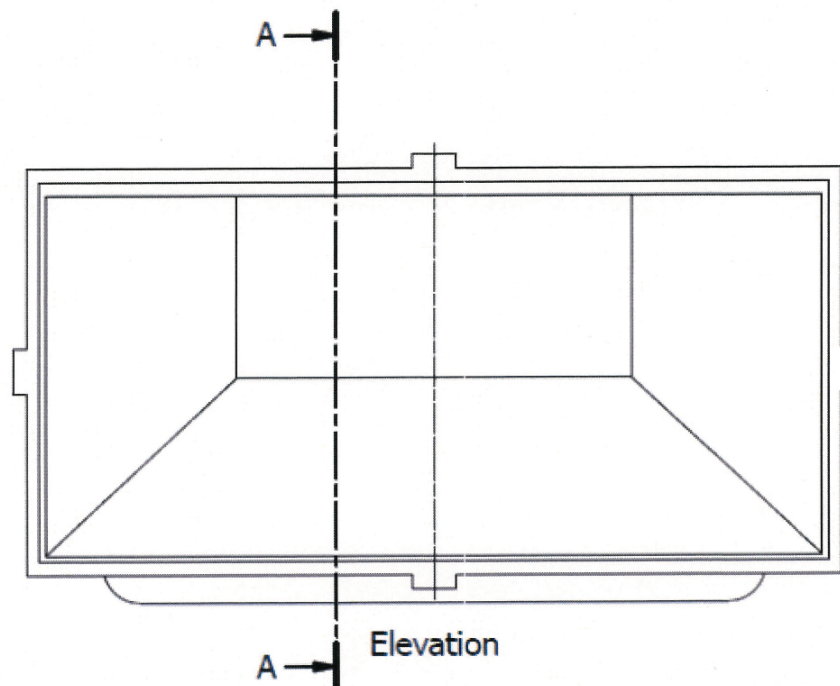
Drawn By: [REDACTED]
Date: 28/02/2019
Scale: 1:1
All sizes in mm
Tolerance: +/- 1mm
Drawing 2/2



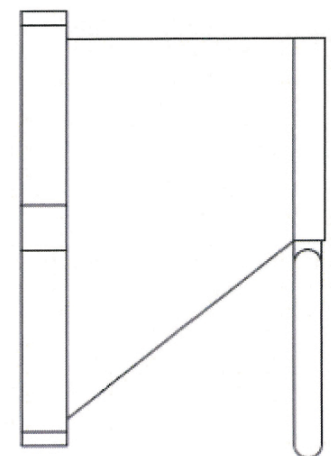
Plan



Sectional End Elevation

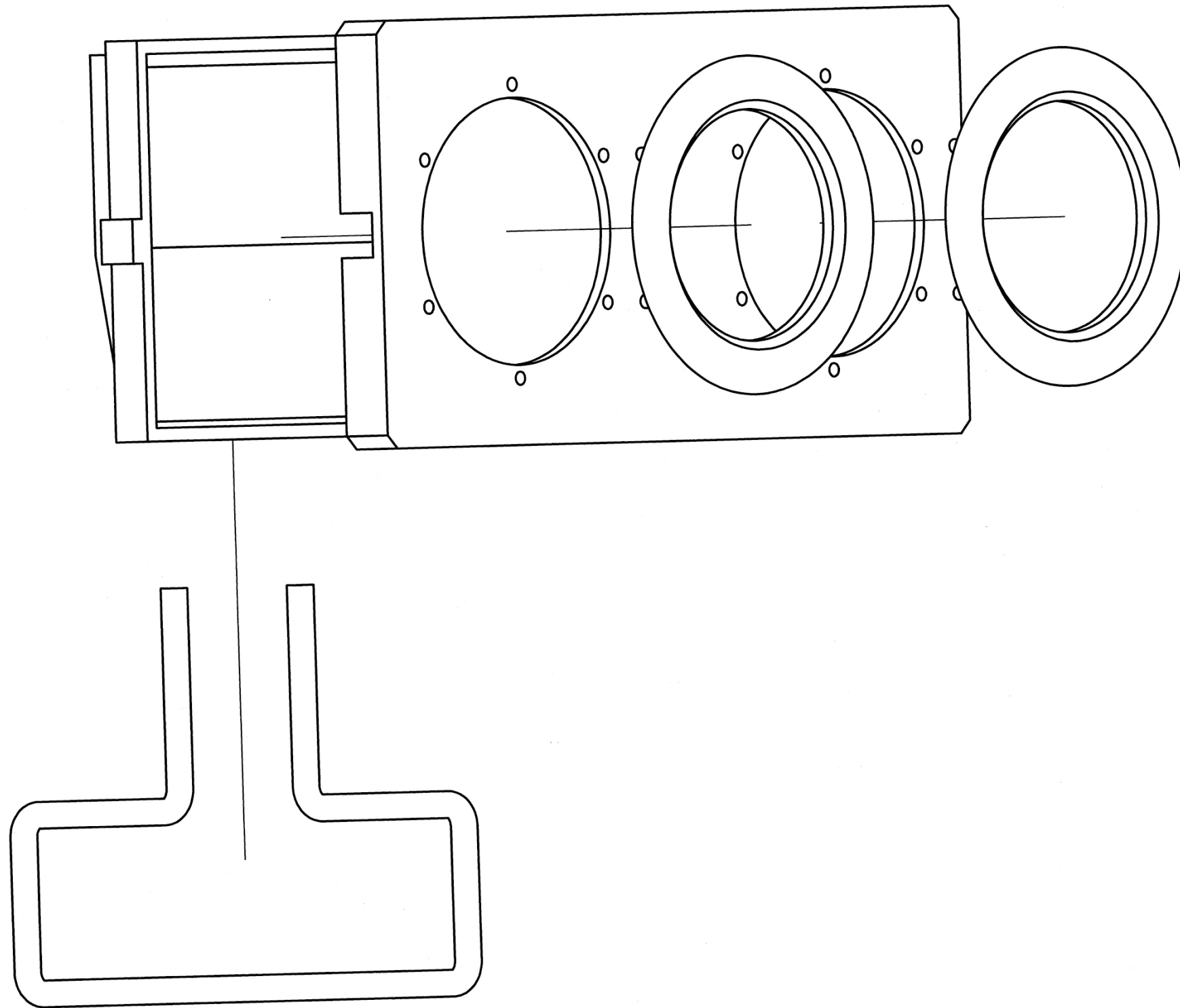


Elevation



End Elevation

Task 1c



Exploded View

Drawn By: [REDACTED]

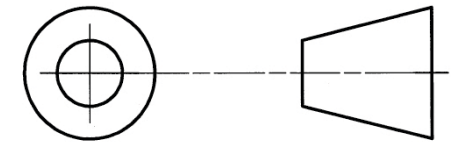
Date: 01/03/2019

Scale: 1:1

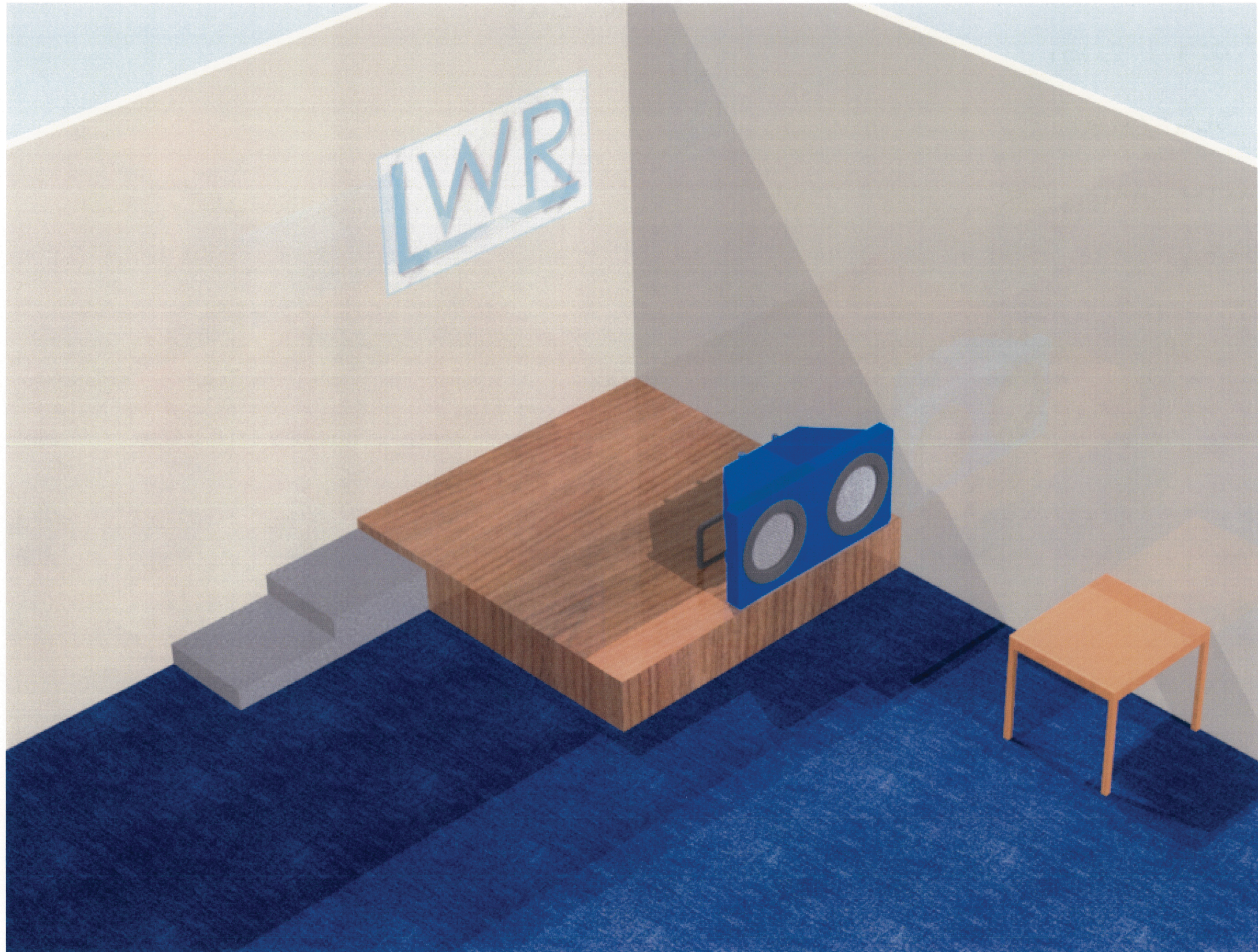
All sizes in mm

Tolerance: +/- 1mm

Drawing 1/1



Task 2a



Task 2b



Background-colour ³/₄ - used to link to company.

Image - company logo, underlined with a drop shadow on the line to create depth

OUTSIDE BACK

FRONT

Final paragraph in copy text with the link. Large text to make it have a quick rhythm.

Website is highlighted with colour one to create value.

Text - Company Name drop shadow to help create depth in the layout

Image - buttons on a speaker used to make the layout on the outside have a quick rhythm.

Shape-colour ²/₂ - used to create flow.

INSIDE FRONT

BACK

Image - Assembled Speaker

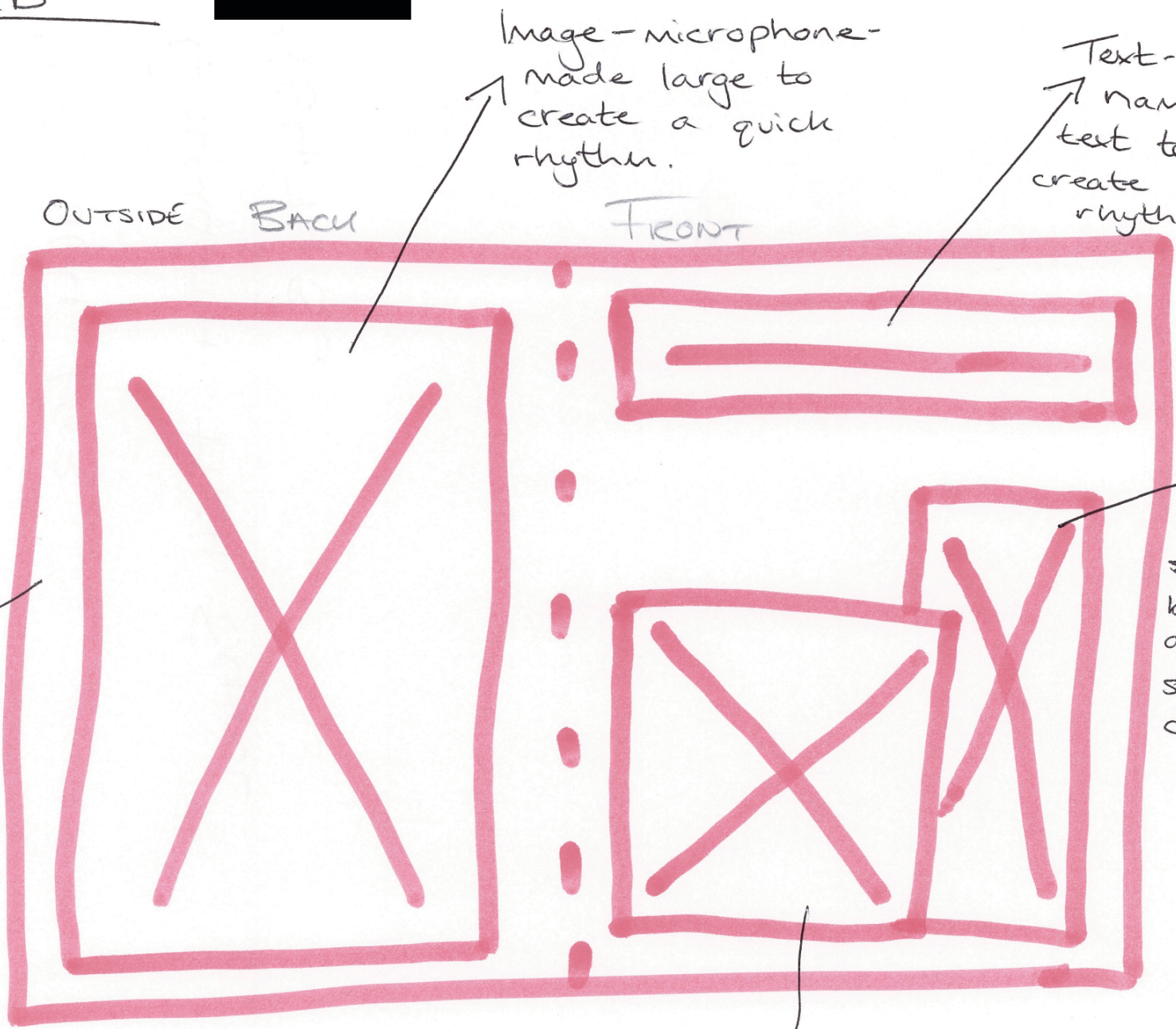
Copy text paragraph 3 smaller than image to create a slow rhythm.

Image - circle microphone - larger than text to create depth

Text - copy text - paragraphs 1+2 - small writing to create a slow rhythm.

Background-colour ³/₃ - used to link it to the company.

TASK 2b



Background colour ³ links the leaflet to company.

Image company logo - large to create a quick rhythm.

Text paragraphs 1 and 2 from copy text - small font to create a slow rhythm.

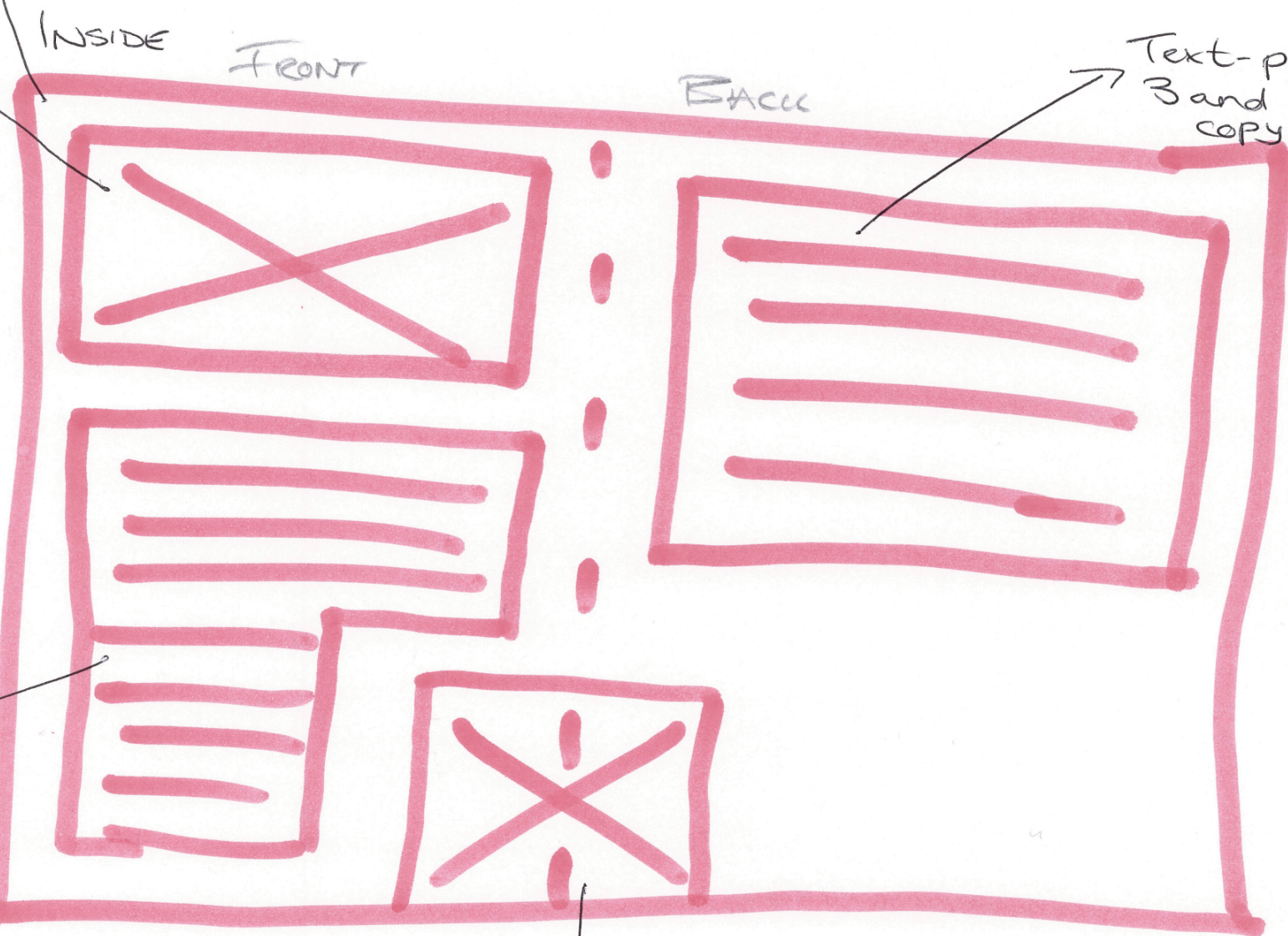
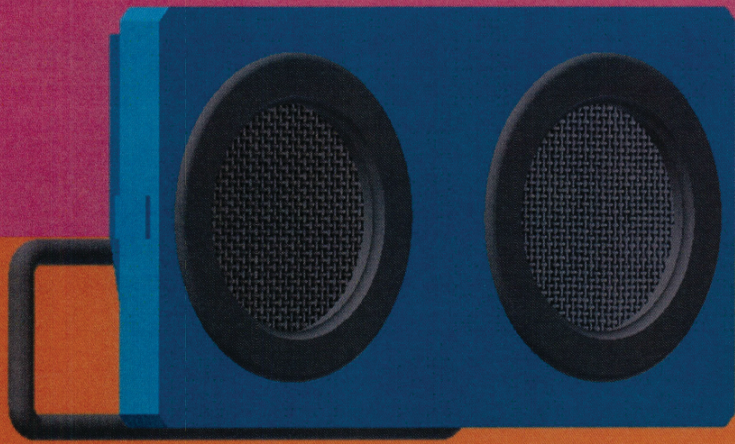


Image - amplified sound - uses flow to link the two pages together.

TASK 2c

INSIDE



The musician's wingman — this portable speaker features electric and bass guitar connectivity. This allows you to connect your instrument (using our mobile phone app) directly to your speaker to use as a practice amplifier.

The LWR Music portable wireless speaker remains lightweight, while still delivering a powerful and rich listening experience. The twin-speaker setup produces clean vocal sounds and boasts a powerful bass response.

Featuring a range of pre-set sound setups, the LWR Music portable wireless speaker can be customised to suit your every need; from house party music, to relaxation sounds. The compact nature of this speaker makes it an ideal product if you are on the move, or simply enjoy listening to your sounds in a variety of rooms and locations around your home.



FRONT

BACK

OUTSIDE

LWR

Visit our website
www.lwrmusic.co.uk
for more details on

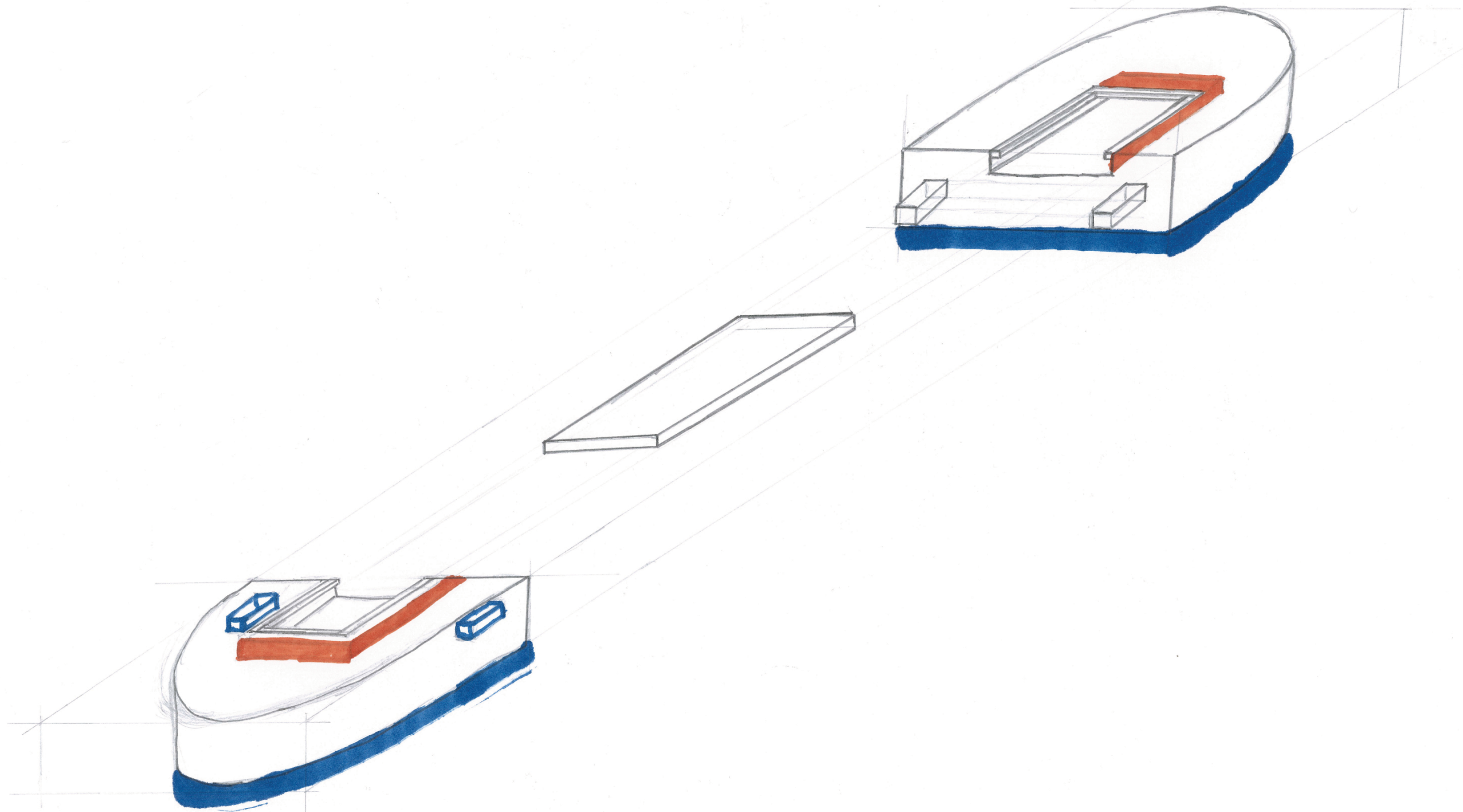
LWR Music



BACK

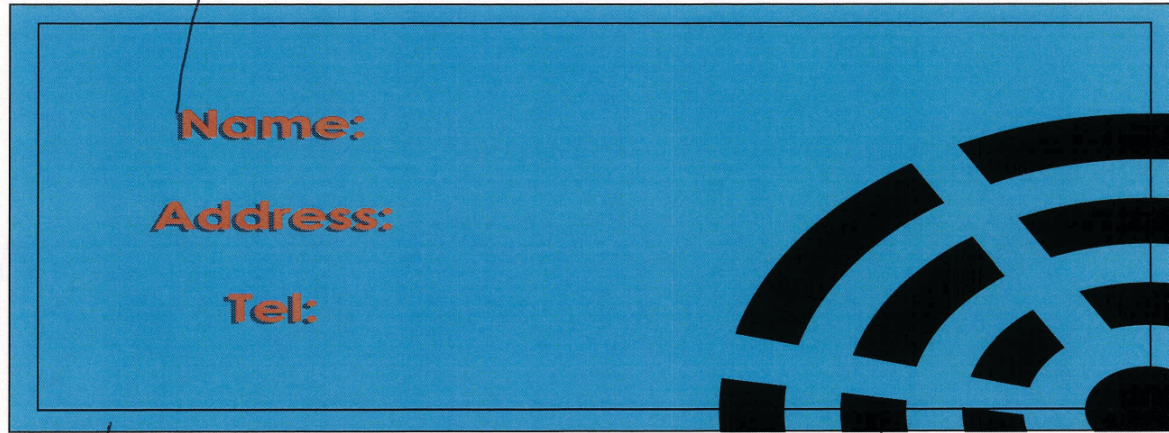
FRONT

TASK 3a



TASK 3b

Drop shadow - used to make text stand out



Bleed - used to make the graphic continue off the page.

Non-Visible area



Flow text along a path - used to make the text look fun.

Bleed - used to make the graphic continue off the page.