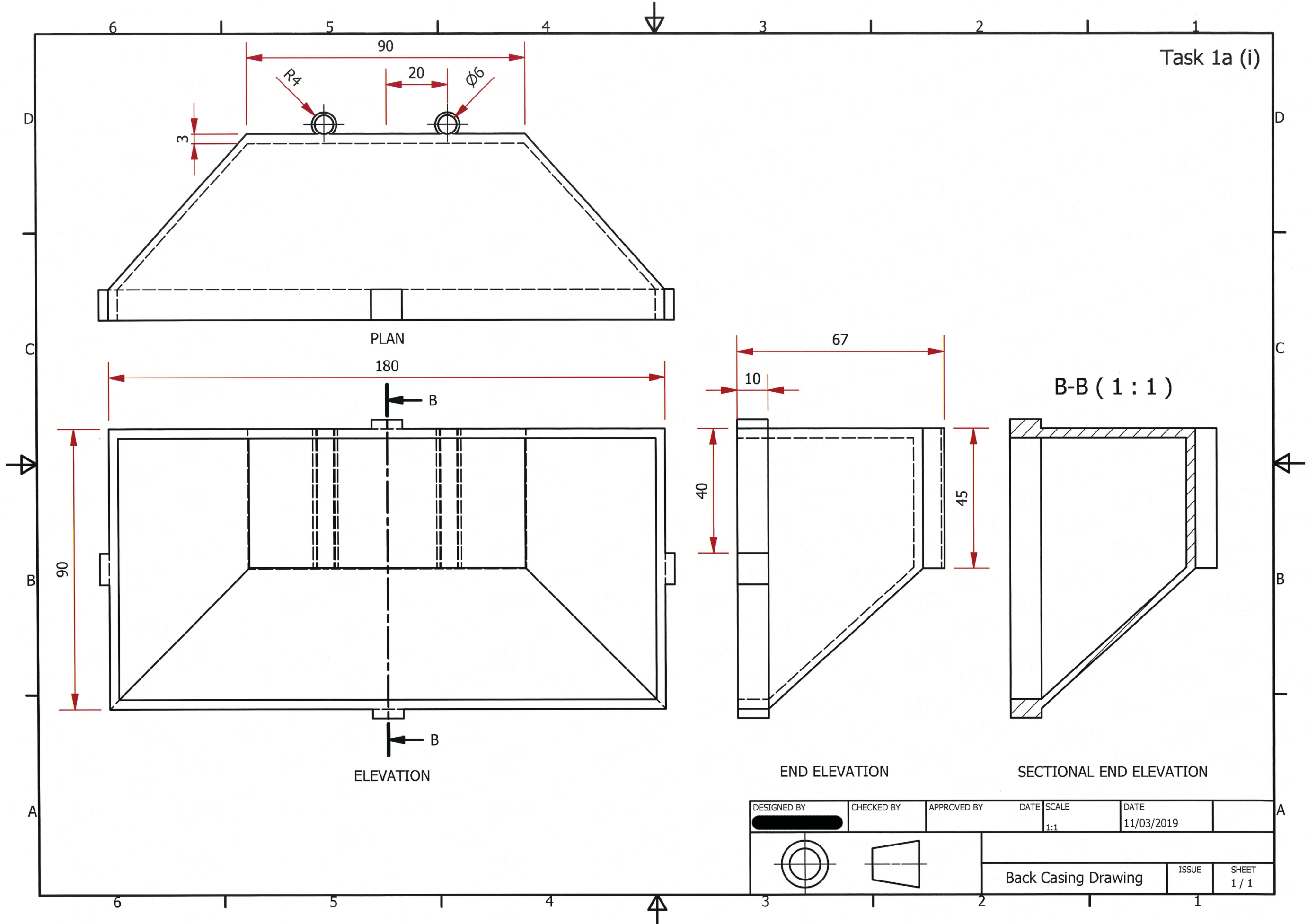


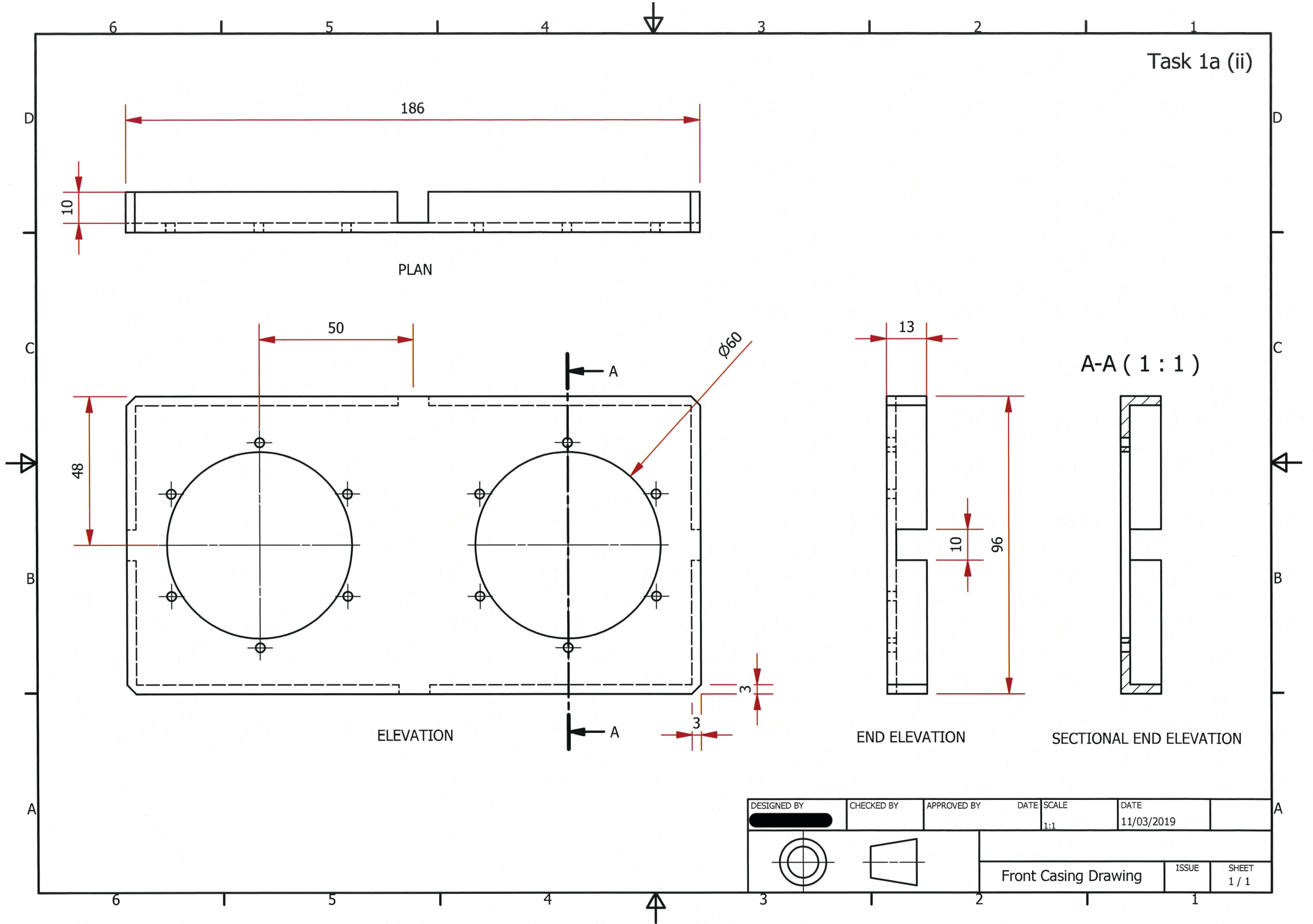


Task 1a (i)



DESIGNED BY	CHECKED BY	APPROVED BY	DATE	SCALE	DATE	
				1:1	11/03/2019	
 		Back Casing Drawing		ISSUE	SHEET	
				1	1 / 1	

Task 1a (ii)

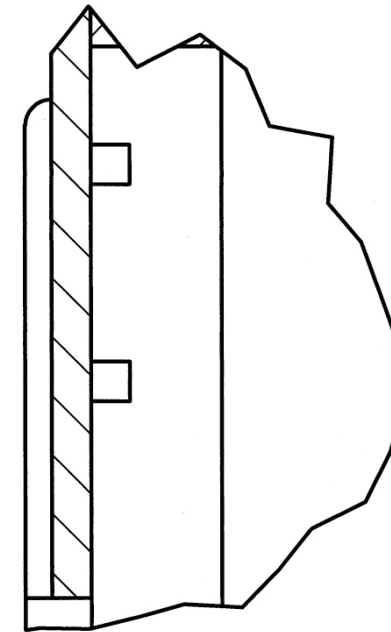


DESIGNED BY	CHECKED BY	APPROVED BY	DATE	SCALE	DATE	
				1:1	11/03/2019	
Front Casing Drawing			ISSUE	SHEET		
			1	1 / 1		

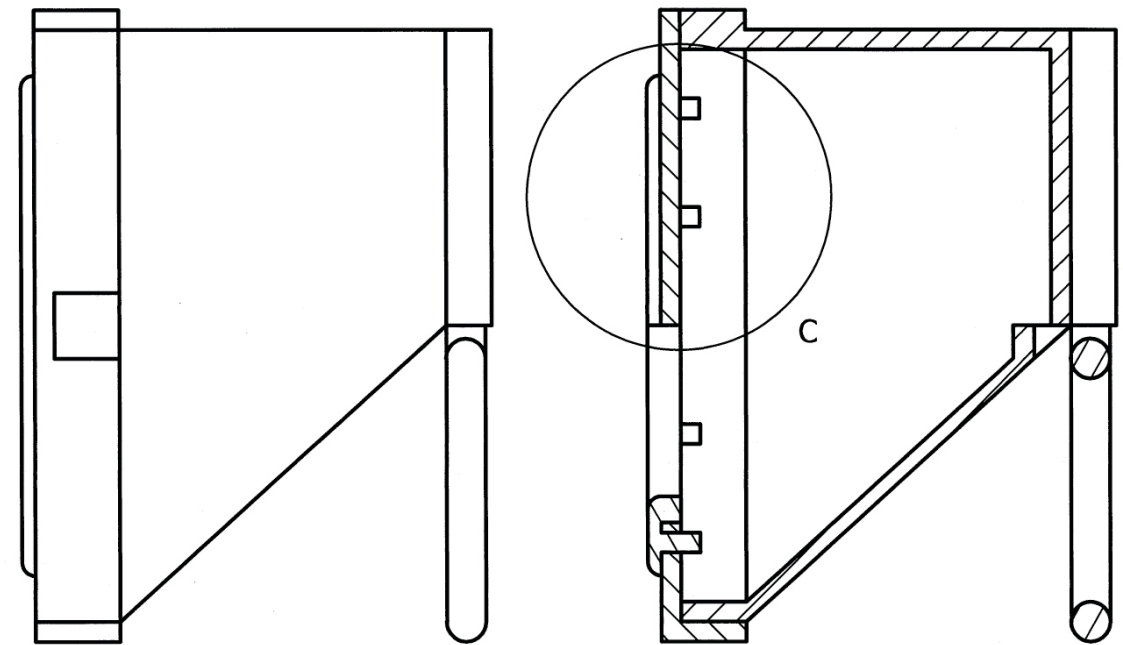


Task 1b

C (2:1)



B-B (1:1)

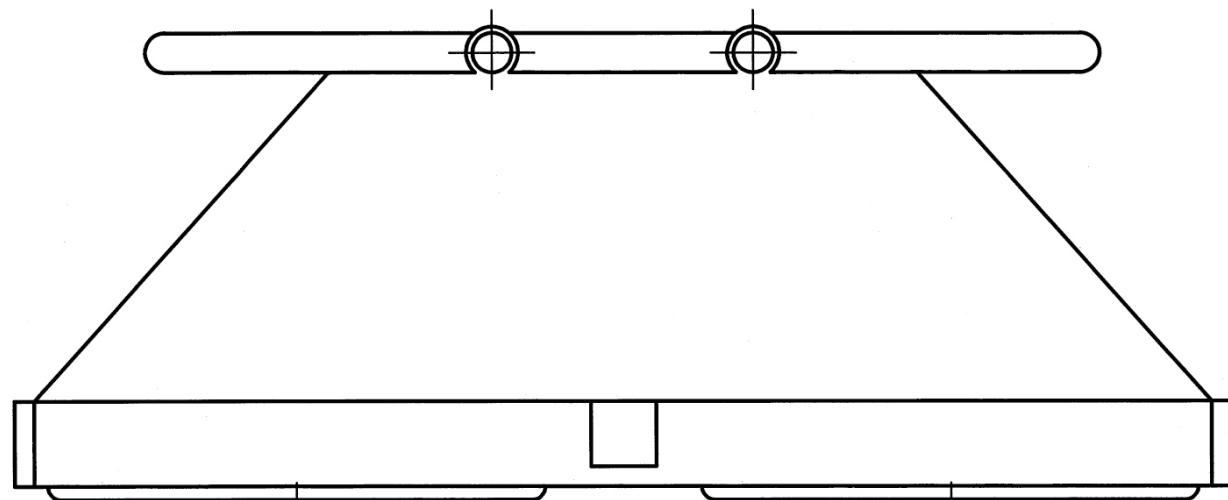


END ELEVATION

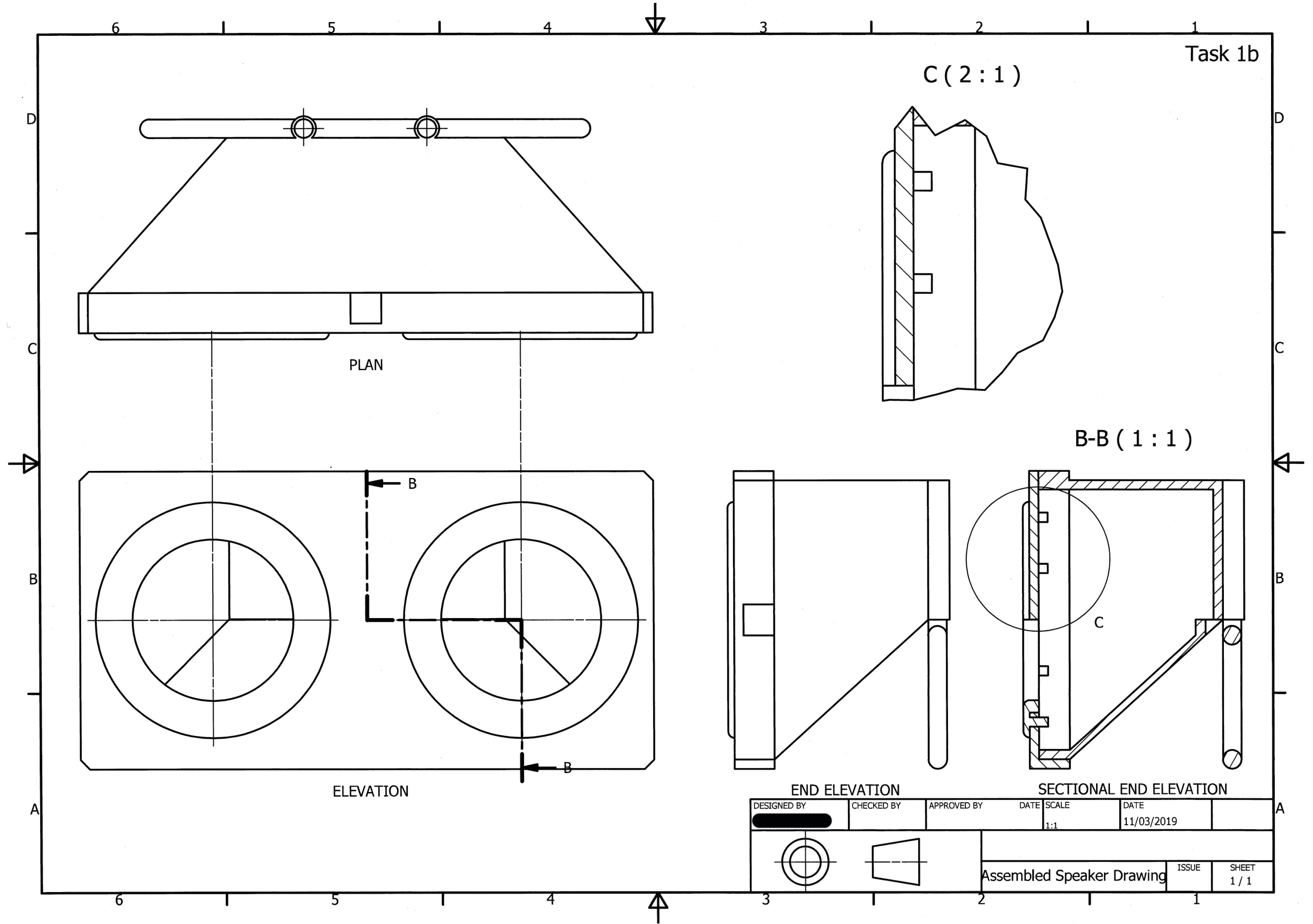
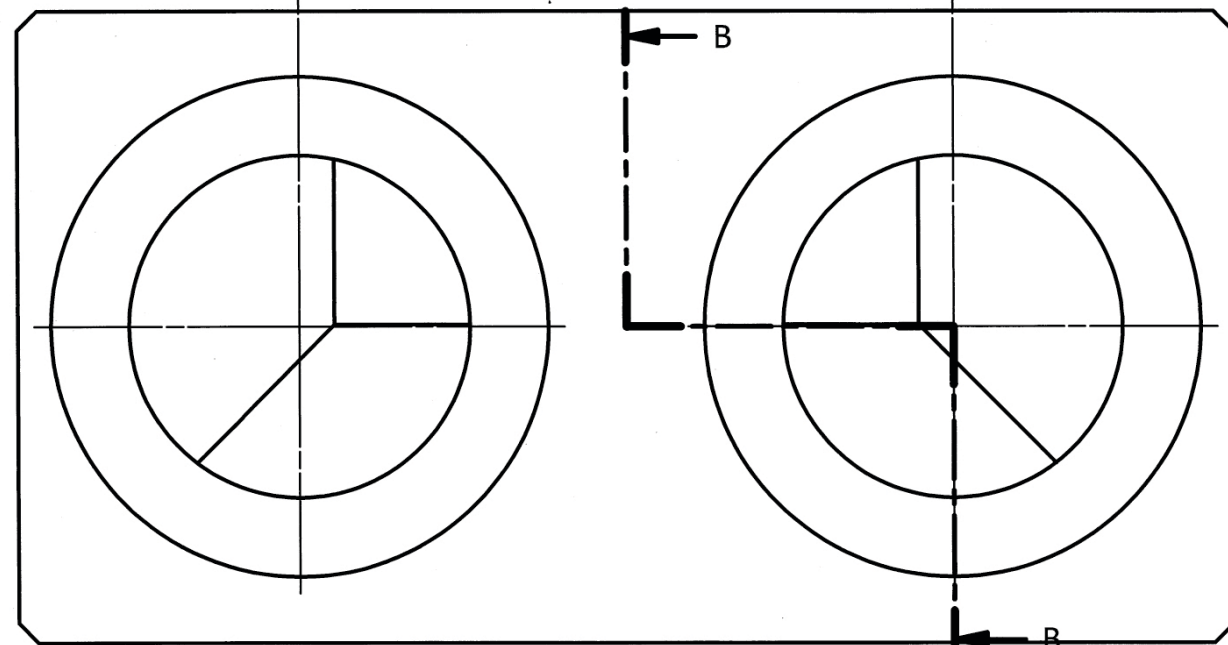
SECTIONAL END ELEVATION

DESIGNED BY	CHECKED BY	APPROVED BY	DATE	SCALE	DATE
				1:1	11/03/2019
			Assembled Speaker Drawing		
				ISSUE	SHEET
				1	1 / 1

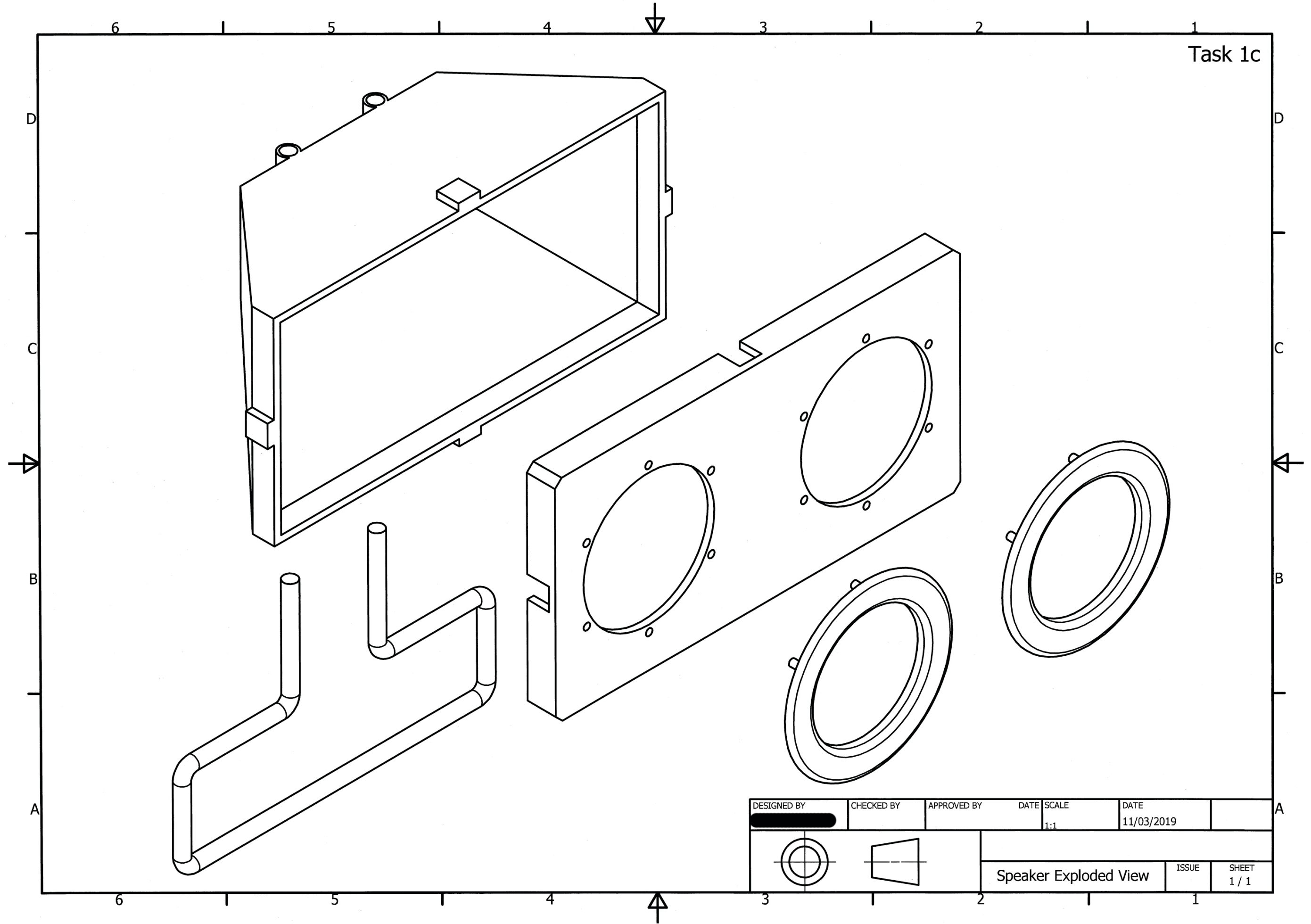
PLAN



ELEVATION



Task 1c



DESIGNED BY	CHECKED BY	APPROVED BY	DATE	SCALE	DATE	
				1:1	11/03/2019	
			Speaker Exploded View		ISSUE	SHEET
					1 / 1	1 / 1



Task 2b

SCALE 1:2

depth with image in front of coloured shape

depth with speaker in front of audio level shapes.

↑ FRONT & BACK ↑

rhythm created by repetition of audio level shapes

depth with text on top of coloured shape box.

depth created with text and mic image on top of coloured background.

↑ INSIDE PAGES ↑

rhythm by continued line

SCALE 1:2

All blue is C25 M 74 K 0

depth created with logo over line shape

background C25 M 74 K 0

depth created with text over image.

\* Rhythm created with coloured text boxes

Orange C9 M 58 Y 92 K1

depth created with guitar image.

↑ FRONT + BACK ↑

rendered scene.

copy text.

depth created with text over coloured shape

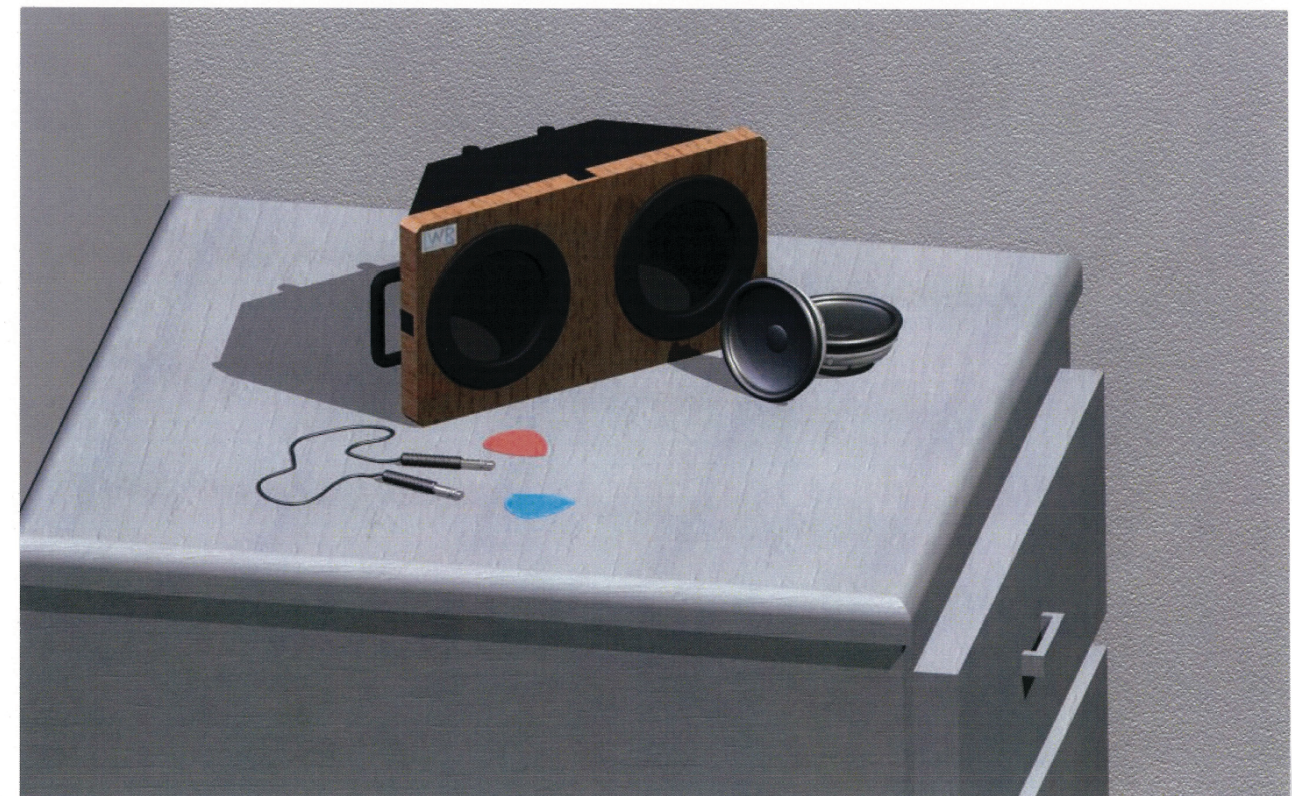
microphone behind image.

↑ INSIDE PAGES ↑

depth created by overlapping rendered scene with text box.

Rendered speaker scene.

Task 2a



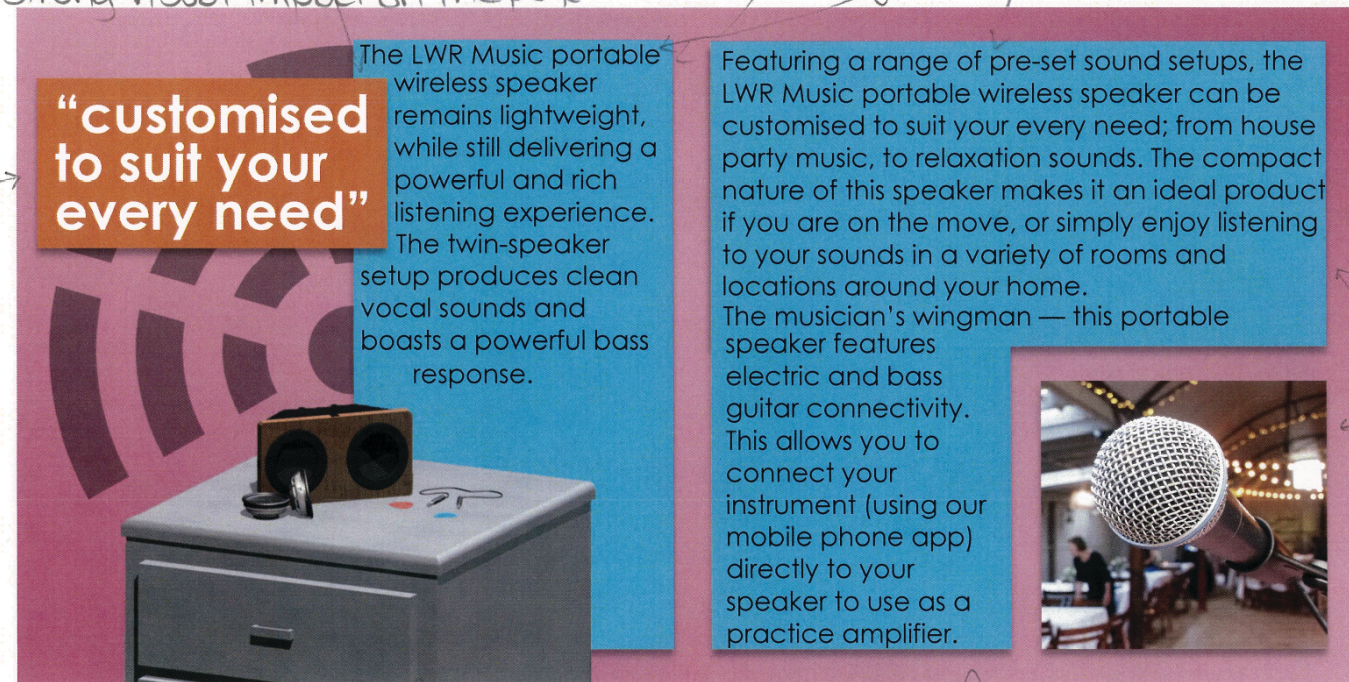


Task 2b  
Inside

the columns and text boxes create a flow to the text keeping it easy for the reader to follow.

depth is created by layering the orange text box in front of the blue text box. This makes the quote stand out as like the rendered scene it seems closest to the viewer and creates a strong visual impact on the page SCALE 1:1

rhythm created by having all of the copy text about the speaker in the blue text boxes. This helps the reader to follow as it is clear what areas on the page will contain the information. It helps direct the readers eyes around all of the info on the page.



rhythm created by using orange text boxes for quotes on the front and inside page. Makes it easily identifiable as a quote.

The picture and text box are aligned on this page which makes it easier to read and follow. It creates a better flow.

depth is created by layering a rendered scene with the speaker in front of the blue box of text. This helps to make the image stand out and creates a striking/ eye-catching visual impact

There is a more symmetrical structure on the inside pages as this makes the text easier to follow for the reader. On the left the overlapping text and pictures helps to maintain a strong visual impact as it is asymmetrical. This helps draw the readers eyes to the quote and rendered room while still having the copy text easy to follow.



Task 2c  
Front and back

contrast is used by layering the orange on top of the blue background / shapes behind. creates a strong visual impact and helps the text / box stand out.

The use of leaving white space on the front page helps the reader to look around the whole page

depth created by layering logo on top of blue bar shape. Helps to direct viewers eyes towards the logo as it appears to be further forward.

rythm created by using orange boxes behind text. This links the front and back pages and helps the reader to find important info and quotes from the copy text easily



SCALE 1:1

depth created by layering coloured shapes and text around the speaker image. This helps the text to stand out highlighting important info

depth again created by layering image on top of a shape. This helps the guitar image to stand out as it appears to be the closest thing to the viewer.

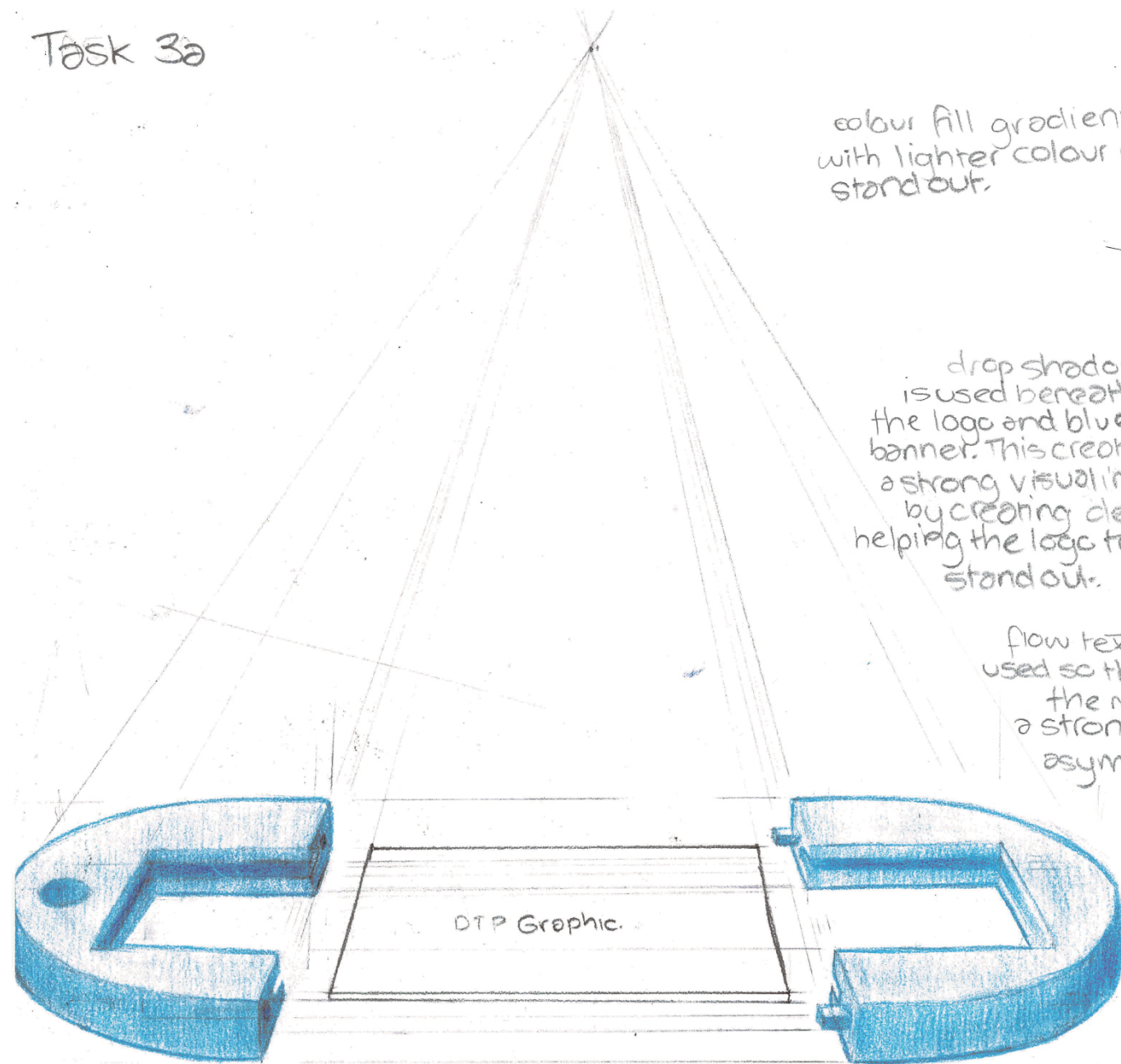
depth created by layering images and text on top of a shape. This creates a strong visual impact and makes the speaker image stand out. as well as drawing the readers eyes to the surrounding text boxes.

Rythm is created by the two harmonising colours of the shapes behind the logo and the speaker image & text. This helps to direct the readers eye between the two most important things on the page, the company name/logo and the speaker image and text.

The use of depth on the variety of overlapping elements creates a strong visual impact on the front page.



# Task 3a



1 POINT PERSPECTIVE.

# Task 3b

colour fill gradient c25 m74 y0 k0 at top/bottom with lighter colour in middle to help black text stand out.

transparency gradient is used to allow the image to be seen better. The banner helps to direct the readers eyes towards the image without obstructing the picture.



SCALE 2:1

drop shadow is used beneath the logo and blue banner. This creates a strong visual impact by creating depth helping the logo to stand out.

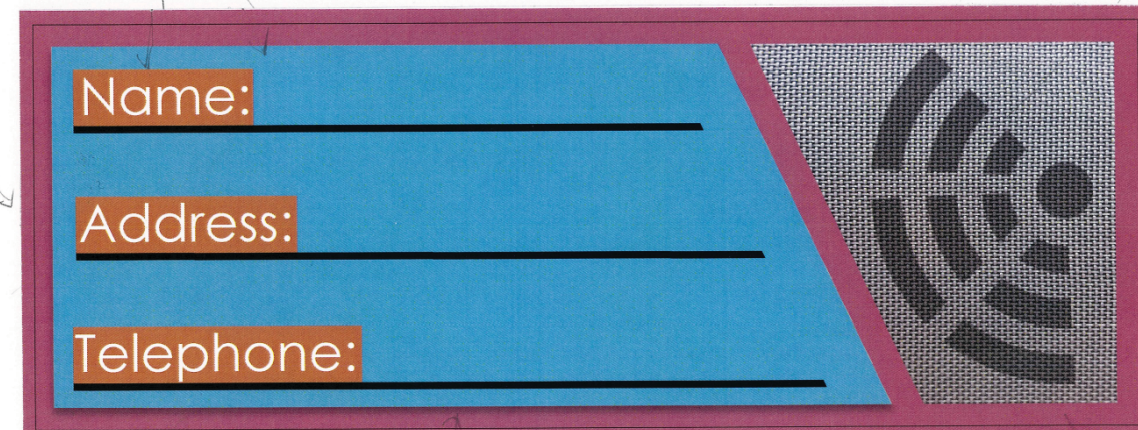
edges of the mic image cropped to make the mic appear larger. This helps to make it stand out.

flow text along a path is used so the text goes along the music staff. This creates a stronger visual impact as the asymmetrical layout stands out.

colour fill c9 m58 y92 k1 used here with drop shadow to create a border and help create depth and a strong visual impact.

colour fill of contrasting blue (c55 m0 y8 k0) and orange (c14 m88 y22 k1) help the text to stand out and creates an eye catching visual impact.

transparency used on wireless sign to allow the mesh of the speaker to be seen through



SCALE 2:1

drop shadow on blue box to create depth and a strong visual impact. Makes the page look 3D and makes the box appear closer to the reader.

The speaker mesh has been cropped to align with the blue shape beside. Creates a stronger visual impact as the shape is asymmetrical