

Candidate 2 evidence

Assignment and Practical Activity

You must use this workbook to present your assignment and practical activity.

There are spaces for your responses for each part of the assessment. You may complete the workbook by hand, or electronically. You may add links, extra space or extra pages if needed.

Brief chosen for Assignment and Practical Activity.

Develop a fashion/textile item to be included in a celebrity-endorsed range aimed at teenagers.

Stage 1: Design and Plan (46 marks)**1a Themes (2 marks)**

Identify two key themes to investigate from your chosen brief.
Explain why each theme is important for the brief.

Key Theme	Explanation (2 marks)
Theme 1	One key point of the design brief is that the target market is Teenagers. To ensure my garment is suitable for this age range, I must conduct research online to find out what garments are 'on-trend' as teenagers are influenced heavily by trends. I could also use a survey to find out what styles, colours, textiles etc. appeal to this market.
Theme 2	A further key point of the design brief is to fit a celebrity endorsed range. This means I will have to research, using the internet, various celebrity endorsed ranges. This can influence the style of the garment including the pattern and fabric that I use as celebrity ranges often have a specific criteria such as sizing, colour and material used.

1b Investigations (18 marks)

Carry out three investigations into these key themes, using a different investigative technique for each.

The investigations must include research into each of the following, in relation to your chosen brief:

- textile technologies
- consumer needs/choices
- fashion/textile trends

Each investigation is worth 6 marks.

Your evidence for each investigation must include:

- details of the research technique and source(s) used (1 mark)
- an explanation of the relevance of the investigation (1 mark)
- the results of your research
- the main points from your research that you will use to develop your fashion/textile item (4 marks)

You may present the evidence from your investigations in a variety of different ways such as written reports, graphs, mood boards, video evidence, recordings of interviews, photographs or any other relevant format.

Attach relevant evidence of your investigations here.

Investigation 1

<http://www.ivypark.com/>

<http://www.topshop.com/en/tsuk/category/clothing-427/ivy-park-5463599>

Ivy Park official website and Topshop Ivy Park page

<https://www.vogue.com/fashion-shows/designer/fenty-puma>

Fenty X Puma Vogue

<https://www.vogue.com/tag/celebrity/kanye-west>

Kanye West Vogue

I am going to research websites that are celebrity endorsed clothing.

Puma has Rihanna as a celebrity endorsement. Her clothing line is known as Fenty x PUMA. It is a high end fashionable take on regular Puma clothing. It is more expensive and more extravagant.

In the image of Rihanna on the right, you can see that the style is heavily influenced by shiny metallics. These dazzling silvers attract attention from a distance and create an impression of confidence from the wearer. The silvers will portray the idea of rich, luxurious clothing.



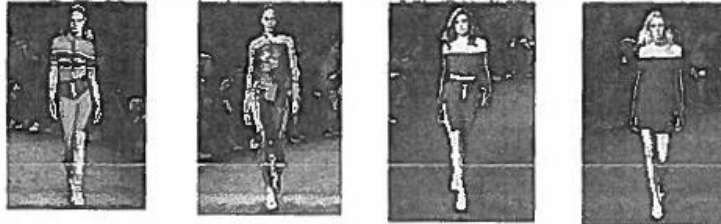
See below a few items from Fenty X Puma Autumn/Winter range 2017.



Similarly to Rihanna's image, the clothing in this range is short in length and compliments the shape of the legs. This will create the impression of longer legs and emphasise the fashion statement being made. Satin material can be used to give the garment a more expensive and shiny look. Furthermore, the clothing in the range is uniformly oversized. This enhances the combination of a stylish and comfortable look. Zips are also commonly used on this garment. One garment noted is an A-line dress, this also accents the legs and has an oversized skirt.

This range uses contrasting colours, various shades of black and white. These are bold colours and in hand with the design creates a very streetwise style.

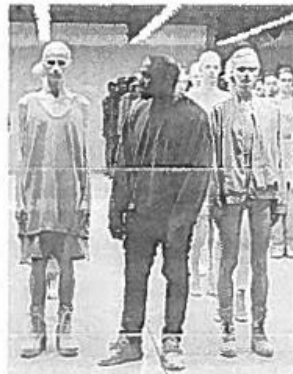
Fenty X Puma summer range incorporates a lot of bright, vibrant colours.



Again, Rihanna uses contrasting colours, this creates a very popping image. The bright colours are placed on top of the darker ones. This range is very tight fitting which will complement the wearer's full body shape as it will cling to the figure.

Fabrics used to achieve this look can include lycra, a stretch fabric. This fabric is tight but leaves plenty room for movement and is often popular for dancewear.

A second celebrity endorsed range I have researched is Adidas Yeezy. This brand is endorsed by Kanye West.



This range includes a lot of neutral colours including nudes, beige, blacks, khaki green and various shades of brown. This range really embraces nature and is heavily influenced by it. The clothing is

oversized and baggy making it very comfortable to wear. The garments in this range are made mostly from cotton. Cotton is a natural plant fibre. It has many properties including absorbency, making it ideal to wear in hot weather as it will absorb the wearer's perspiration. It is a light fabric as well, which will also help to keep the wearer cool.

This garment also fits the range as it is oversized and within the colour scheme. The sleeves are long covering the full arm. This garment is made from wool. Wool comes from the fleece of a sheep and goes through many cleaning processes before being spun, then either knitted or woven. Knitted fabrics have an open, looped structure, meaning it has more stretch whereas woven fabrics involve passing weft over warp. The more weft over warp, the fabric will have a satin appearance. Woven fabrics are strong and firm. The wool will help to keep the wearer warm and is absorbent. Wool is flame resistant meaning it is suitable for younger people to wear.



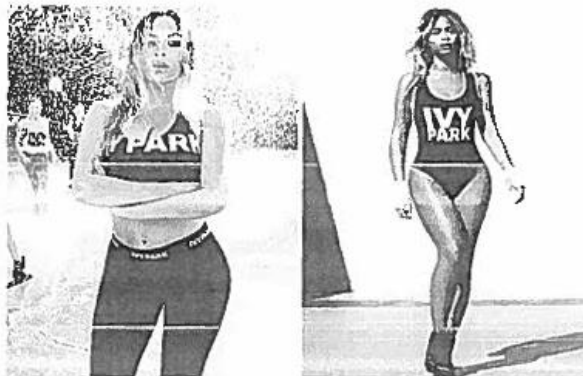
Another garment from one of Kanye's collection is this tight fitting dress, with small skinny straps. This would be good to wear in warmer climates as it is light wearing and allows for the wearing to stay at a cool temperature whilst being fashionable.



Similarly, this dress also has short sleeves and thin straps.

This material has a ribbed texture, making it stand out more and appear more unique. With this garment being tight fitting, it would use a fabric that will contain elastane. This allows for it to be stretched and return to its original shape. With it being ribbed it would not be suitable to iron so the fabric will need to be crease resistant for example polyamide, polyester or acrylic.

A third range I have researched is Beyoncé IVY PARK. This is a celebrity endorsed range at Topshop.



Beyoncé's range is heavily influenced by sportswear and

physical activity. The colours include variations of black, white and grey. The clothing is loose fitting and also made from cotton or Lycra. Cotton is ideal for sporting's clothing as it is light and absorbent, helping to keep the wearer cool and remove any perspiration. The Lycra makes it perfect for sportswear, as it is an artificial, stretchy fibre and allows for movement.

This means the wearer can move freely throughout the activities without fear of the clothing ripping or for it to be stretched and too big when taken off. This because it can return to its original shape and size after being stretched.

Furthermore, Lycra has a breathable membrane, helping to keep the wearer cool when sweating. Lycra can also absorb perspiration.

In conclusion, all the different ranges use the same material, Cotton. I will take this into consideration when designing my garment.

The colours used are mostly neutral and different shades of the same colour however, Rihanna's Summer/Spring collection which is dominant in neon and bright colours.

All the celebrity ranges aimed at teenagers appear to have comfort and style at their forefront, whether it be oversized fit or a comfy material. I can conclude that some garments are fitted, this is demonstrated by the use of darts or clingy materials such as lycra. I will need to keep this in mind when choosing a fabric and a design. A suitable fabric for comfort would be cotton. To appeal most to a teenage market I will design my item to suit Rihanna's Fenty X PUMA range. To suit this specific celebrity endorsed range I will have to select the correct colours, which from my research I have found will include either shades of black and white. From this colour pallet I have decided to create a contrast black and white dress. I would like to create a garment that will have legs on exposed. Furthermore I am keen to create a satin look as this is very trendy and fashionable in the teenage market and adds a quality feel. I will need to conduct further research to decide a suitable fabric to use that will convey quality but is easy to work with.

Further from my research i have decide that my garment will have a zip as a design feature. This will be practical and fit the celebrity endorsed range as it features on multiple examples of garments produced for these celebrity ranges.



Investigation 2

For my second investigation, I have chosen to do a survey. This will allow me to gather information and preferences from my target market, teenagers.

1. What style of dress are you most drawn to?
 - a) T-shirt/Jumper Dress
 - b) Body-con dress
 - c) A-Line
 - d) Flared dress
2. What colour would you prefer for a dress?
 - a) Black and white

- b) Navy and neon pink
- c) Khaki green
- d) Nude

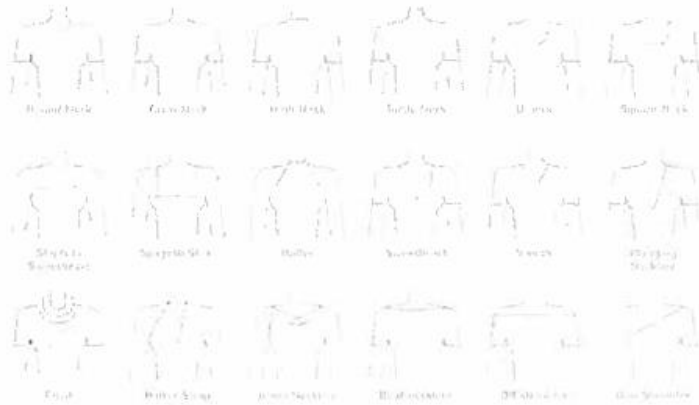
3. Would you prefer sleeves to be

- a) Short
- b) Long

4. Would you prefer the length of the dress to be

- a) Maxi
- b) Midi
- c) Mini

5. What type of neckline would you prefer on your garment? (insert answer in box below)



6. What feature would you like on the dress?

- a) Hand embroidery
- b) Pockets
- c) Belt
- d) Buttons

7. As well as a zip, how would you like the dress to fasten at the back

- a) Hook and Eye
- b) Buttons
- c) Poppers

d) Roli loop

8. Do you have any additional comments or preferences for the garment?

Answers –

1. A – 6
B – 1
C – 12
D – 1
2. A – 14
B – 2
C – 4
D – 0
3. A – 9
B – 11
4. A – 8
B – 2
C – 10
5. Round neck – 15
Halter neck – 3
High Neck – 2
6. A – 2
B – 14
C – 3
D – 1
7. A – 18
B – 1
C – 0
D – 1
8. - Perhaps adding hidden pockets to the garment would be good.
- A satin material would look really nice for this dress
- Lining of cotton to make it suitable for warmer climates

Conclusion

One piece of information I can conclude from my survey is that the most popular style of dress is an A-line. This can be concluded as 12/20 people surveyed voted for A-line as their favourite style. I have decided to do an A-line dress for garment as this suits the brief of being aimed at teenagers.

A further piece of information I can conclude is that the most popular colour for my garment is black and white. I will choose to do my A-line dress in black and white as it fits Rihanna's celebrity endorsed range and is popular in the teenage market.

One conclusion that can be made is that the sleeve length was very close with 9/20 wanting short sleeves and 11/20 wanting long sleeves. As the long sleeves was slightly more popular, I will

choose to do long sleeves. This also relates to the celebrity endorsed ranges having oversized qualities, therefore I could consider long sleeves being oversized.

From my survey I found that 10/20 people want a mini length dress. This shows that half of the people surveyed prefer this length of dress. I will take this into consideration when designing my garment. I will make the skirt of my dress short.

Furthermore, I can conclude that that 15/20 surveyed preferred a round neck. For my garment I will use a round neck-line. This will suit an A-line style dress best and will be popular amongst teenagers.

From my survey I found that 14/20 people wanted pockets in my garment. To fit the celebrity endorsed range I will add big pockets that are oversized. This will suit both the teenage market and the brief of suiting a celebrity endorsed range.

From my survey I can conclude that hook and eye fastening was the most popular with 18/20 preferring this fastening. I had already considered using a zipper as this is highlighted in the celebrity ranges, therefore I will pair this with the hook and eye fastening that was most popular with teens.

Furthermore I can conclude that teens would like a medium weight fabric such as satin. In addition teenagers also want concealed pockets. I will consider both these elements when designing my dress. I will select a fabric that has similar products to satin for example Duchess Satin.

A cotton lining would be suitable as cotton absorbs perspiration.

Investigation 3

I have chosen to do an interview with a fabric specialist to help me gather information on the best construction methods to create my garment.

Q1. What fabric would be best for a A-line dress?

Q2. Would Duchess Satin be a suitable material?

Q3. What fabric would you recommend I avoid?

Q4. What type of fastening do you recommend for this garment? (the fastening would be at the back)

Q5. What type of material would you recommend I use for the sleeves?

Q6. Do you think neutral colours such black and white fit the brief to suit a teenagers range?

Q7. Do you think I have the skills to complete this garment?

Q8. Is there anything else I should consider and keep in mind to ensure my garment fits my brief?

ANSWERS

Q1. What fabric would be best for an A-line dress?

A. I would recommend a medium to lightweight fabric for this style of dress. For example cotton, polyester or viscose would be suitable.

Q2. Would Duchess Satin be a suitable material?

Yes, that would be suitable for this style of garment as it has a lustre to it which would add interest to the fabric. As it is medium weight it will drape nicely. These features are suitable for a celebrity garment.

Q3. What fabric would you recommend I avoid?

Too heavy or thick fabric would not be so suitable. Also fabric that frays too much, as last year's pupils found brocade frayed and was difficult to work with.

Q4. What type of fastening do you recommend for this garment? (the fastening would be at the back)

I would recommend a flat or concealed zip and a hook & eye or a button & buttonhole at the top of the zip. A covered button and Rouleau loop could be an option too.

Q5. What type of material would you recommend I use for the sleeves?

A mesh material would complement the aesthetics however it is very challenging to work with and hard to sew, though, adding elastic at the bottom of the sleeves will provide a nice gathered effect. Perhaps considering Duchess satin that was used for the bodice and skirt would be suitable.

Q6. Do you think neutral colours such as black and white fit the brief to suit a teenagers range?

Yes, as having seen the websites that girls in the class have chosen, these colours and pattern are popular.

Q7. Do you think I have the skills to complete this garment?

Yes, as you have made a dress for a toddler and a skirt. Your confidence has grown

Q8. Is there anything else I should consider and keep in mind to ensure my garment fits my brief?

Make sure you measure seam allowances to get a good fit. Press seams to give a professional finish and try to stick to your time plan. Remember to note any changes, for example, 'I had to unpick the zip because it was too uneven.

A top-stitch along the neck-line would provide a professional finish, suitable for celebrities.

I can conclude that a medium to light weight fabric for my garment as my teacher recommended this. I will consider cotton and polyester or silk as they are light weight. Using a medium weight fabric causes it to drape better. My teacher agreed that Duchess Satin would be a suitable fabric as it adds interest to the garment. This means that the dress will be more aesthetically pleasing. My teacher recommends that I avoid heavy weight fabric or ones that fray easily, therefore I will avoid Denim and brocade.

My teacher recommends using a zipper and hook and eye or buttonhole. I have decided that I will use a zipper and a hook and eye as I feel this will give a more elegant look than buttonhole therefore more suitable for a celebrity range.

My teacher recommends that I use Mesh for sleeves as it will be aesthetically pleasing. Using elastic for the opening of the sleeves on the wrist would be useful as elastic is hard wearing and resistant, this will make it last a long time, as should celebrity clothing. However, this will be difficult to work with as the material frays easily and doesn't sew very well. My teacher suggested using the same material – duchess satin – for the sleeves as well as the bodice and skirt. I have decided to use a glittery mesh fabric because it adds lustre to my dress and makes it look more expensive.

My teacher believes that my chosen colour palette of black and white suits the brief, therefore I will use this colour scheme.

My teacher believes that I have the skills to complete this garment as I have practised by making a toddler's dress. She feels my confidence has grown from making this dress.

I can conclude that I need to take exact measurements and press all seams, this will make my garment a higher quality.

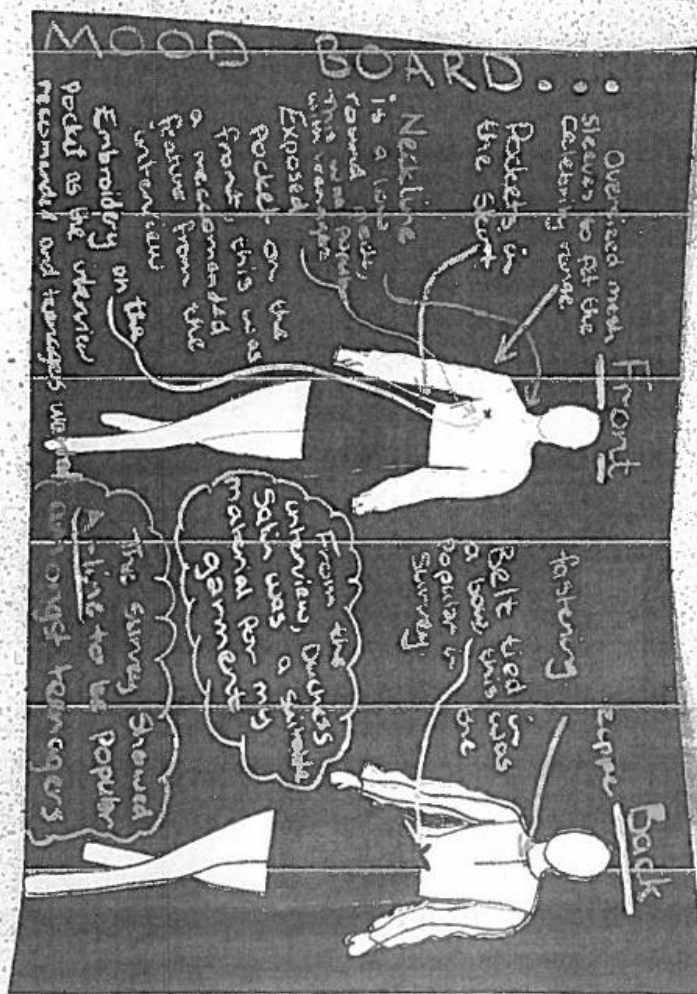
1c The solution (18 marks)

Present an appropriate solution for the complex fashion/textile item. (4 marks)

You could present your solution as a labelled diagram, a description, a computer-generated image, samples of fabrics and components to be used with written commentary, or a combination of these.

You must provide enough detail to allow your solution to be clearly visualised.

Attach evidence of your solution here.



I have chosen to do an A-line skirt dress, made from Duchess Satin with glitter mesh sleeves. A zipper along with hook and eye will be my chosen fastening. There will be the option for the wearer to add a belt to their outfit. A cotton lining was added within the bodice to allow it to sit better.

Justify the features of the solution (14 marks)

You must identify fourteen features of your solution and explain why each is important in meeting the needs of the brief. Each point of justification must be based on evidence generated from the investigations.

Your identified features must include:

- at least four design features of the fashion/textile item
- at least four properties and/or characteristics of the textile(s) to be used
- at least four construction and/or finishing techniques

Features	Justification
Design features of the item (minimum of 4)	<p>Zip - It meets the brief as zippers were commonly used in my chosen celebrity endorsed range.</p> <p>Hook and Eye fastening - This meets the brief as it proved to be popular amongst the teenage market as from my survey it had the majority of the respondent's votes.</p> <p>Long Sleeves - This suits the brief as not only was it the most popular sleeve length in my survey, long sleeves are oversized meaning it fits the celebrity endorsed ranges of being oversized</p> <p>Pockets - Pockets fit the brief as in my survey, one person specifically asked for pockets. I will do pockets to suit the teenage market.</p> <p>Wide A-line skirt - This fits the brief as the skirt is oversized, just as many celebrity ranges clothing is.</p> <p>Rounded neck-line - This is suitable for the brief as it was shown to be the most popular neckline in my survey, taken by teenagers. Therefore my neckline is aimed at the teenage market.</p>

<p>Properties and characteristics of the textile(s) to be used (minimum of 4)</p>	<p>Drape - Using duchess satin will allow it to sit nicely as it is medium weight fabric. This fits the brief as investigation 3 recommends using this material as it also adds interest to the material and I have been told these are ideal for celebrity ranges.</p> <p>Cotton - Cotton was used in the lining. This meets the brief as in my survey one teenager suggested using a cotton lining. This makes it more comfortable for the wearer as it keeps them cooler in warmer climates as it absorbs perspiration.</p> <p>Elastic - Elastic in sleeves fits the brief as elastic is hard-wearing and resistant. This means that it will last a long time, as should celebrity clothing</p> <p>Strong - the fabrics used within this garment are strong. This is suitable for the brief as the teenage market can be adventurous and wear my dress out, meaning it will need to be strong to with stand wear and tear.</p>
<p>Construction/finishing techniques to be used (minimum of 4)</p>	<p>Darts - This makes the garment more fitted. This suits the brief as many celebrities endorsed ranges have fitted items, from using darts.</p> <p>Top-stitching - This was added to the neckline of my garment. This fits the brief as I found that added this gives it a more professional look which celebrities require for their garments.</p> <p>Lining - adding a lining to the bodice of my garment was recommended from my survey answered by the teenage market. This provided a higher quality finish as the garment had a better shape and sat nicer.</p> <p>Seams - As recommended in the interview I measured all seams, leaving a seam allowance. All seams were pressed. This was recommended in my interview as it provides a more professional finish, suitable for a celebrity range.</p> <p>Further construction techniques include</p> <ul style="list-style-type: none"> Slip-stitching Hem Inserting sleeves Pockets Tailor tacks from pattern

1d and 2d Plan and Record of Work (4 marks)

Candidate name _____

Date _____

You must produce a comprehensive plan for making your fashion/textile item, including information about processes and timelines. (4 marks)

Your plan must be completed before you start to make the fashion/textile item.

To help you with the evaluation of your plan (in Stage 2b) you must record your progress in the 'Record of Work' column.

Date and approximate time allocation	Planned sequence of work	Record of work: notes/comments/amendments
--------------------------------------	--------------------------	---

13/2/19 1 hour 40 mins	Pattern pieces pinned to fabric and cut out. The pieces were cut out to the size I needed as it was a multi-size pattern. Notches were cut out as well as the lining pieces.	This took as long as I had expected and scheduled for it to take.
14/2/19 20 mins	All sides were zig-zag stitched to neaten edges and prevent unravelling.	
15/2/19 50 mins	Darts marked, pinned and tacked onto the bodice and sewn on using a sewing machine.	
20/2/19 1 hour 40 mins	<p>Notches of the bodice were matched up and the pieces were sewn together, leaving 1.5cm seam allowance.</p> <p>The pockets were sewn together with the notches matched up. A Zig-zag stitch was used to join these pieces.</p>	
21/2/19 2 hours	<p>The front and back pieces of the skirt were pinned together. The pockets were also pinned in. The skirt was tacked using tacking thread before sewn together using a sewn machine. 1.5cm seam allowances were given.</p>	<p>This took longer than expected as it was timing consuming added and removing the tailor tacks. However, the tailor tacks were needed to ensure all pieces were caught when using the sewing machines. The pockets were especially fiddly.</p>
22/2/19 2 hours	The two pieces, the skirt and bodice were pinned together. The two pieces were sewn together.	<p>This took much longer than expected as the pieces needed to be measured to ensure that they did fit together. All seams need to meet therefore adjustments were made which took a lot more time than anticipated.</p>
25/2/19 2 hours 20 mins	The front pieces and the back pieces of lining of the bodice were sewn together then pinned into the dress. Once pinned, the bottom of	<p>Again, this took longer than expected as slip stitching was very very time consuming. This was because it was difficult to only</p>

	the lining was folded, 1cm, as the bodice was the sewn to the skirt using slip stitch.	pick up a very small piece of the material when sewing.
26/2/19 15 mins	Once lining sewn in, all seams were pressed.	
60 mins	The bodice neck line was folded 1cm then 2cm, as was the lining. These two folded pieces were sewn together using atop stitch	This took longer than expected as the pieces had the tendency to unfold.
40 mins	Two lines of gathers were added to the top of the sleeve, 2cm away from the edge of the material.	This was time consuming as it was difficult to work with the mesh material to not let it rip.
27/2/19 1 hour 40 mins	The gathers were adjusted to fit in the sleeve hole of the bodice and then pinned in and sewed. The lining was also sewed into the sleeve hole.	This went better than expected as from previous experience I know that inserting sleeves is very challenging, however I did not need to unpick my sleeves during attaching them.
28/2/19 1hour	A casing was created on the bottom of the sleeve, by folding up 1cm then 2cm. This was pinned and zig zag stitched.	This was a lot more difficult than expected and involved unpicked and re-sewing. This was even more difficult because of the material of the sleeves. When unpicking I had to go very slowly and carefully to make sure I didn't rip the sleeves.
55 mins	I measure and cut 10cm of elastic. The casing space was found and using a safety pin, the 10cm of elastic was pulled through the casing. The casing was sewn shut by hand.	As I spent time re-sewing to ensure the casing was big enough, it was quite straight forward to pull the elastic through.
4/3/19 30 mins	The 12inch zip was pinned in then tacked, leaving out the lining.	
30 mins	Using a zipper foot, the 12inch zip was sewn on,	This was a little more time consuming than expected as it was

	leaving the bottom piece not attached.	difficult trying to get as close to the zip as possible and keep in a straight line. The tailor tacks made this easier.
6/3/19 20 mins	Using a needle and thread, the bottom part of the zip was sewn in.	By sewing this part in by hand, it took more time but made the final zipper look neater as it is difficult to sew the bottom part using a machine.
1 hour	Slip stitch the lining over where the zipper has been sewn on.	Slip stitching was time consuming and I did not finish this in the same day.
7/3/19 20 mins	Complete slip stitching lining to bodice.	
30 mins	Sew on hook and eye fastening at top of dress.	This took less time than anticipated.
20 mins	Hem pinned 1cm then 2cm.	This took longer than expected because the skirt was very wide. This meant that I had to constantly be measuring how much I was turning the hem up by.
8/3/19 35 mins	Hem was sewn and tucks were added to give a better finish to the front of the skirt.	This too a little bit longer than expected as it was hard allowing for the tucks and keeping the front of the skirt flat.
25 mins	Press.	

1e Requisition (4 marks)

You must list all the textiles and components needed to make the item and explain why each textile and component is necessary for the manufacture of the item.

You must provide enough detail to allow the textiles and components you will use to be clearly visualised.

Quantity/amount	Item Details	Justification
2 meters by 45"	White Duchess Satin fabric	Heavy weight - needed for the bodice
2 meters by 45"	Black Duchess Satin fabric	Heavy weight - needed for the skirt
2 metres	White mesh/net fabric	Light weight - needed for the sleeves
1	Paper sewing pattern multi size	McCalls pattern, fitted top, a-line skirt. Needed for the correct pieces to make dress
1	12 inch white zip	To fasten the dress at the back
1	Hook and eye fastening	To fasten dress at the back
1	Reel of white thread	For sewing the bodice
1	Reel of black thread	For sewing the skirt
1	Paper scissors	To cut the pattern
	Fabric scissors	To cut the fabric
	Iron	To press fabric
	Iron board	To iron on
	Ruler	To measure seam allowances
	Measuring tape	To measure length of dress
	Pins	To pin fabrics together
	Sewing machine	To sew fabric pieces together
	Sewing needle	To hand sew eg. Slip stitch

	Tailors Chalk	To mark on darts and zipper
	Tailors dummy	To see how the dress will fit and check measurements
	Zipper foot	To use on sewing machine when adding zip
	Unpicker	To remove any mistake stitches

Stage 2: Making the complex fashion/textile item (40 marks)**2a Make and finish the complex fashion/textile item (36 marks)**

You must make and finish the complex fashion/textile item which you presented as your solution in 1(c), using at least **eight** appropriate textile construction techniques.

You may choose to incorporate more than 8 techniques in the item, but you will not be awarded marks for these additional techniques.

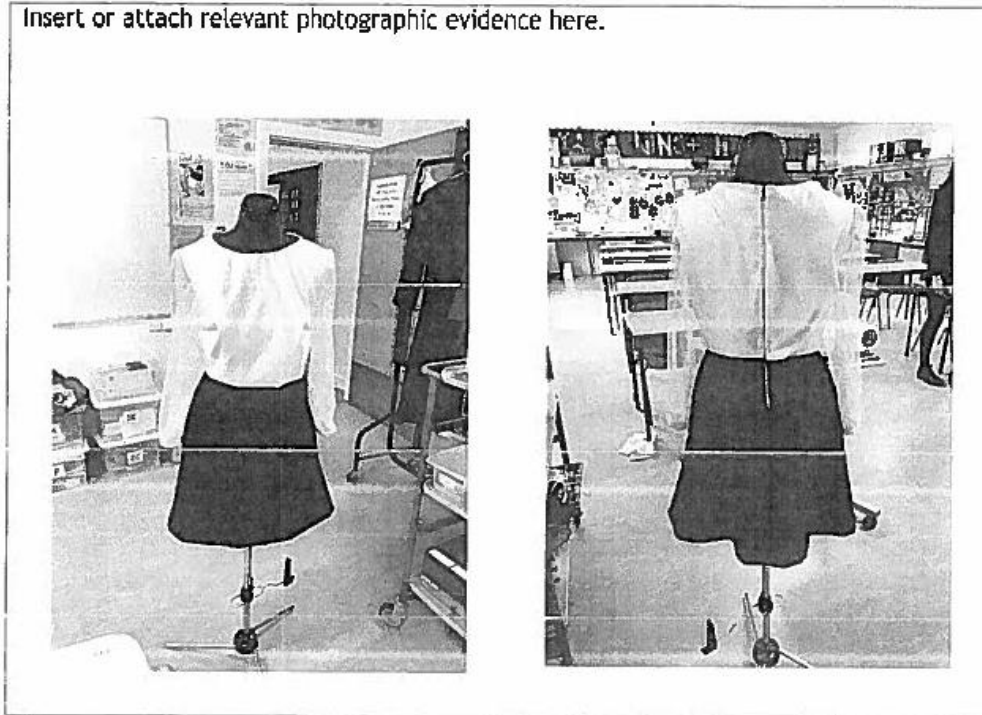
Your teacher or lecturer will assess you throughout the manufacture of your item.

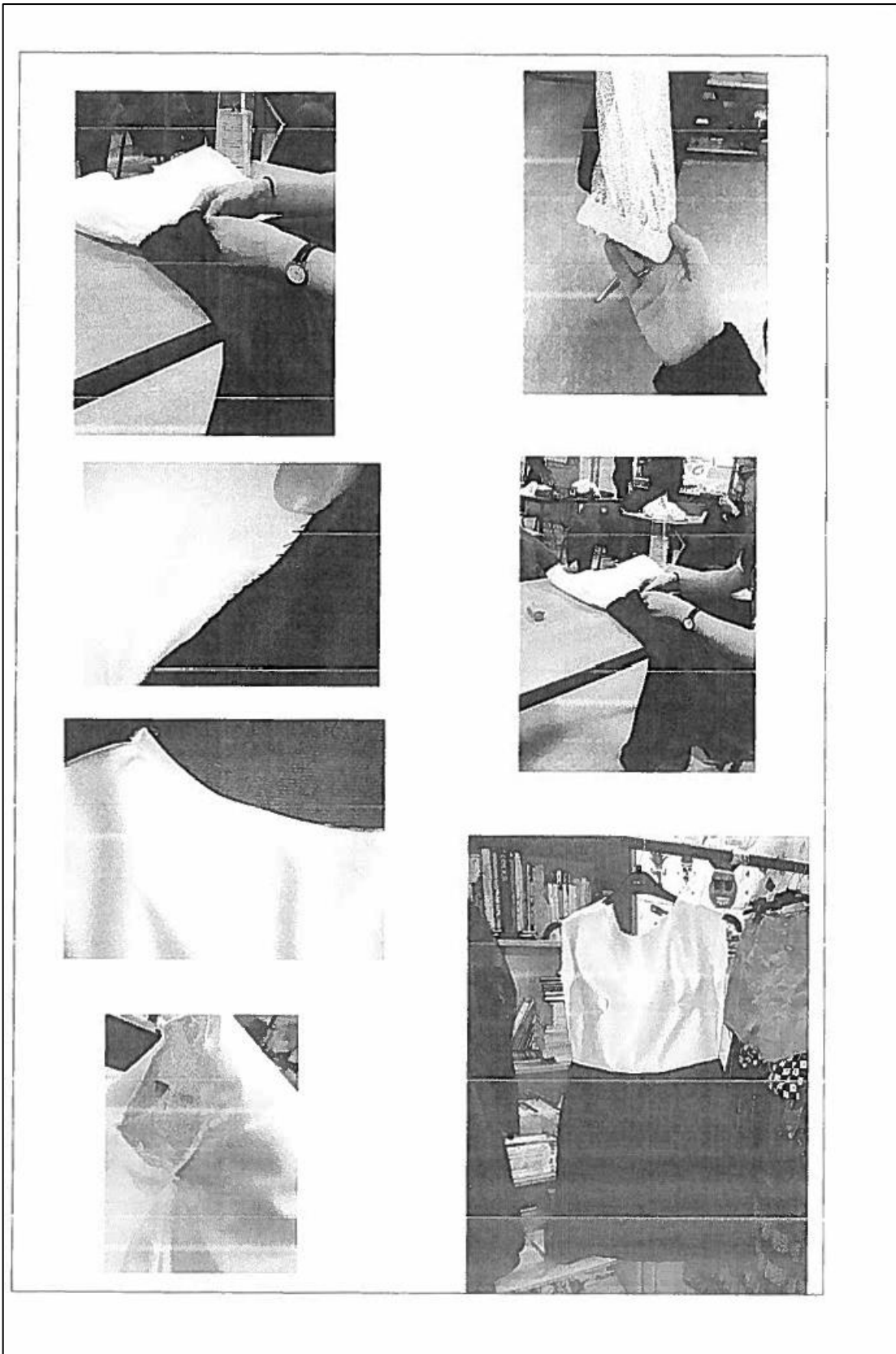
You must provide photographic evidence of the manufacture of your item.

This must provide clear evidence of:

- the textiles and components used to make the item
- the item during at least two stages of manufacture. Candidates may wish to take the opportunity to provide additional evidence of construction techniques carried out, which are later hidden by subsequent processes.
- the completed item

Insert or attach relevant photographic evidence here.





Your completed item and your record of work must now be presented to your teacher or lecturer for assessment.

2b Evaluate the effectiveness of the plan. (4 marks)

You must evaluate your plan based on evidence provided by the comments you made on your record of work.

Evaluation

I think my garment looks a lot like how I had planned it to, with it being two toned and having a zipper fastening up the back. However, in the end I chose to not have an exposed pocket with embroidery on the front of the bodice. I had to make this decision based on my time plan not being accurate. This means that as I took longer than anticipated on the sleeves when creating a casing and the gathers, I no longer had sufficient time to complete a pocket on the front of my garment.

Despite this, I am pleased that I completed the lining for the bodice, however I think my garment would've been better if I had lined the skirt of my dress. Again, due to poor time expectations in my time plan, I wasted time fitting pockets and could no longer add my lining. Nevertheless, taking my time on the pockets has paid off as they look very professional and give a nice finish to my dress.

Furthermore, I successfully pressed all my seams after sewing pieces together. This is good because now that the dress is complete the finished garment looks aesthetically pleasing and sits very well.

Stage 3: Evaluation (14 marks)

3a Testing (6 marks)

You must produce evidence of carrying out two tests to provide relevant information about your fashion/textile item. One of these tests must relate specifically to the suitability of the textiles and/or components used.

Each test is worth 3 marks.

For each test you must include:

- the technique and source(s) used to gather the information (1 mark)
- clearly presented results (2 marks)

Aim What information is to be collected?	Technique How will the information be collected?	Source Where will the information be found?
AIM 1: My first aim is to investigate if my dress fitted the given brief and how they overall felt about my garment.	The technique used to gather this information will be a survey	A group of 20 teenagers in my Fashion and Textiles class
AIM 2: My second aim is to investigate if the construction of my garment is suitable and if it met the design brief.	The technique I will use is an interview.	I will be interviewing a fabric specialist,

You can present evidence from your tests in a variety of different ways such as a written report, graph, chart, table, notes from an interview, photographs or any other relevant format.

Attach relevant results of testing here.

Aim 1		
Questions	Answers	
	Yes	No
1. Do you like the A-line style of the dress	20/20	0/20
2. Do you like the colour palette of contrasting black and white?	17/20	3/20
3. Do you like the concealed zip and hook and eye fastening at the back?	19/20	1/20
4. Do you like that the dress has pockets	20/20	0/20
5. Do you think the dress would belong on a celebrity endorsed range?	20/20	0/20
6. Do you like the round neck-line	17/20	3/20
7. Do you think this dress appeals to the teenage market?	18/20	2/20
8. Do you like the mesh sleeves?	19/20	1/20
9. Is there anything you would change about my dress?	Use a brighter colour palette Have V-neck neck-line	18/20

Key Points

I know that my style of dress, A-line is popular amongst the teenage market as 20/20 of teenagers surveyed liked the style.

I know that the colour palette I chose was suitable for teenagers as 17/20 liked the contrasting black and white. However, one teenager said that they would prefer brighter colours for my garment.

I know that the fastening on my dress was successful as 19/20 people liked it.

The pockets on the dress proved to be very popular as everyone liked them.

I know that my garment met the brief as 20/20 people surveyed said that they would expect it to belong on a celebrity endorsed range.

17/20 people liked the round neck-line, showing it to be a popular choice amongst teens.

The majority of respondents feel that my dress is aimed and would appeal to the teenage market.

All most all the teenager responding like the mesh sleeves, with 19/20 liking them.

One respondent said they would prefer a V-neck.

Aim 2

Questions	Answers
1. Do you think my dress is suitable for a celebrity endorsed range?	Yes, from the research you have done, the dress you have designed and made would be suitable for a celebrity endorsed range.
2. Do you think the fabric I used was suitable for the garment?	Yes, the medium weight fabric was suitable for your style of dress.
3. Do you think the hem of my dress is neat?	Yes. Your hem is the same depth all the way round the skirt.
4. Has the zip been attached correctly?	Yes, your zipper has been correctly attached. This has been because you used the zipper foot.
5. Do you think the lining has been done well?	The lining in the bodice has been done very well. Perhaps lining the skirt would have allowed the dress to hang more nicely.
6. Do you think my dress is aimed at the teenage market?	Yes, the research you have completed shows what is popular amongst teens and your dress fits their preferences.
7. Do think the casings in my sleeves were done properly?	Yes, this was a very challenging process on your garment, however, you took your time and completed it to a high standard.
8. Do you think the top stitch has been done properly on the neck-line?	Yes, the top stitch is even all the way round.

Key Points

My teacher thinks my hem is good as it is even all the way round.

My teacher feels my dress fits the brief as it is both suitable for a celebrity endorsed range and is aimed at the teenage market.

My teacher thinks the fabric I used was good as it was medium weight, meaning it draped and sat nicely.

I know that my zipper was added correctly as my teacher commented on this.

My teacher thinks that my lining was added well however, adding a lining to the skirt would've improved the final garment and allowed it to hang nicely.

My teacher noticed that my casings were done properly despite any challenges faced.

My teacher thinks that my top stitching was done well as it is even all the way.

3b Evaluation of the finished item. (6 marks)

You must evaluate your finished fashion/textile item, with reference to the results of testing and the requirements of the brief.

Evaluation

I think that Duchess Satin was suitable fabric to use. In test 2, my teacher also agreed that duchess satin was a suitable fabric as it was medium weight. This means that it is not too heavy to wear and isn't too light so it doesn't sit right. The medium weight gives it a nice drape and allows it to hang well.

I think that using a zipper fastening was a good decision. Based on test one, 19/20 teens surveyed said they liked the zipper fastening. This means that my garment appealed to the teenage market meaning it met the brief.

20/20 surveyed liked the A-line style of my dress. This suggests that my dress is on trend and popular in the teenage market and therefore meets the brief.

One thing I could change about my dress is my neck-line. One survey respondent suggested a V-neck. Perhaps changing to this shape would make my garment more appealing within the teenage market.

I think that it was a good idea to do pockets as test one showed them to be very popular. This could be due to them adding a practical feature to the dress.

I think that adding mesh sleeves was a good idea as they were popular in test one. This means that they were popular amongst the teenage market. Furthermore, as the mesh I used was glittery, I feel as though this added value to my product making the garment look more luxurious. I think this made it more suitable for a celebrity range.

3c Amending the fashion/textile item (2 marks)

You must justify two adaptations, improvements or further developments that might be made to your fashion/textile item to meet the needs of the brief. You must base this on evidence that you generated in the assignment.

Amendment	Justification (2 marks)
Exposed pocket	One thing I would change about my dress is adding a pocket to the front of my dress on the bodice. I would like to do this because in test 1 I found that the pockets in the skirt were very popular, therefore by adding another pocket, teens may have liked my dress even more as it was even more practical.
Embroidery	I would like to add embroidery to my dress. This is because it would make it closer to my original design brief. I want to add embroidery to my dress as it adds lustre and quality to the product. This would make it of a greater quality, therefore more suitable for celebrity endorsed range as celebrities requiring clothing of a great quality.