

Expressing light and shadow through colour

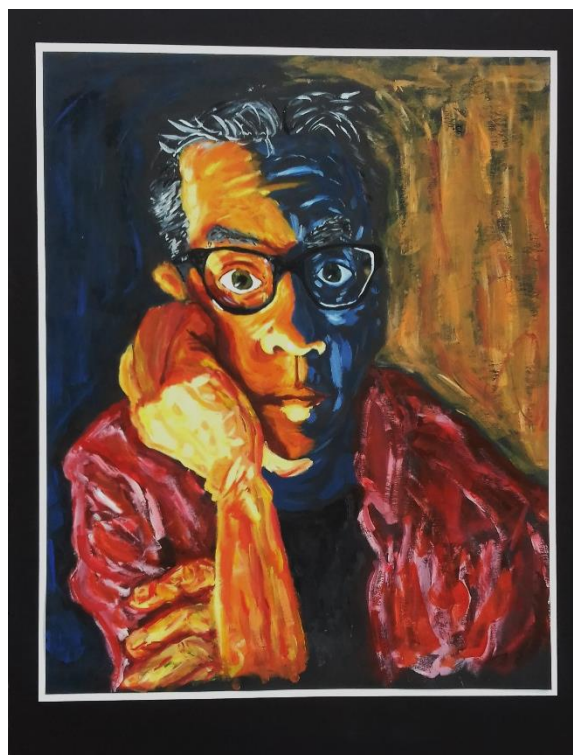
Higher Art and Design Evaluation Expressive portfolio

Cardcase	Portfolio
name	number
Centre	Expressing Light and Shadow through Colour

Introduction to candidates:
The Board wishes to see evidence of the creative process you followed when making through your Expressive portfolio. In your evaluation you should describe and explain in detail the decisions you made when working through your Portfolio, using the word 'intentional' to describe the choices you made as you worked. This should not be done in a list, but in a narrative form, explaining your choices as you made them. This should be done in a narrative form, explaining your choices as you made them. This should be done in a narrative form, explaining your choices as you made them.

Comparison of the pieces:
The comparison of the pieces has given me effective visual impact, as I have been able to see the subject from both different angles of the face. The use of colour in the pieces has been used to create a sense of depth and texture, which is a key element of the subject's expression. The use of colour in the pieces has been used to create a sense of depth and texture, which is a key element of the subject's expression.

This section displays three distinct portrait artworks. The first on the left is a stylized, high-contrast portrait using yellow and black. The middle artwork is a vibrant, multi-colored portrait featuring green, blue, and red. The final artwork on the right is a portrait with yellow, blue, and red tones, depicting a person with glasses.



Higher Art and Design Expressive portfolio – evaluation

Candidate name:		Candidate number:	
Centre number:			
<p>Instructions to candidates</p> <p>You should reflect on and critically evaluate the creative process you followed when working through your expressive portfolio. In your evaluation give justified personal opinions on:</p> <ul style="list-style-type: none"> ◆ the decisions you made when working through your portfolio ◆ the effectiveness of the visual qualities of your portfolio, referring to your theme/stimulus (10 marks) <p>This evaluation must be submitted on the first sheet of your expressive portfolio. Please do not amend the format of this document.</p>			

In my final piece I have chosen acrylic paint as my material. This allowed me to have bright, bold and distinct colours. This also made it easier to blend colours, and give me more effective tone. This is evident in the hand, where I have used bright yellows to show the light on the hand, where the fingers and other areas of the hand are bathed in shadow. I have shown this through dark reds.

The acrylic also allowed me to build up layers of colour, this allows for better tone and texture; the shirt is layered with various shades of reds, this allows me to show the darker areas of the shirt material. I have also used colour for the background; the orange on the darker blue side allows for effective contrasts which brings out the blues more effectively. I have also used darker blues and blacks for the background on the yellow, again this brings out the oranges, yellows and reds for the face better. I have also used black paper, this allows me to blend the blues into the dark background, making my subject look like he's in the shadows. I have also used various brushes to give me a variation in application. The thin brush allowed me to add variation in the colour of the hair, and create subtle detail in my painting. While the larger brushes allowed for distinct, bold strokes; this is evident in the shirt and arm. This is effective as it has given me variation in application, which has given me a difference in tone.

The composition of the piece has given me effective visual impact, as I have been able to split the subject into two distinct contrasting halves. This has allowed for me to express emotion; one of the sides is more lively, while the other is dark, bored. This is further exemplified through how the subject is arranged, which is in a tired, bored position. Although the painting is bright, the contrast between the colours is effective, as it allows for the subject to seem more interesting, even though they aren't arranged in a particularly interesting manner. The application of the paint seems rushed at first, but is clear that certain areas still conform to the boundaries of nature; with light, shadows and colour being there for a reason.

In my final piece, I feel I have been able to effectively portray the ideas set out and experimented with throughout my investigation and development work. In my final piece, I believe I have taken elements from all pieces of my development work. In the study of the eye I was able to show detail something which was lacking in my other studies. This had an impact on my final piece, as I tried to make a more realistic work. Eyes were something I struggled with so by painting an eye itself, it gave me a better idea of where certain colours should be used.

My original concept was to use colour to portray light and shadow and I feel this has been done well as there are bright expressive colours and the blue side fades into the darkness of the black paper, so my final piece shows, colour, light and shadow.

RNQ Higher Expressive Portfolio Commentary: Light and Shadow

Section 1 - Expressive Portfolio - Process

Producing relevant and focused 2D/3D analytical drawings, studies and investigative research appropriate to their selected theme/stimulus and their line of development

Limited relevance		The three analytical studies are all highly relevant to the theme and clearly link to the subsequent developments and final piece.
Partially relevant		
Relevant		
Highly relevant	✓	

Demonstrating a single line of focused development, showing visual continuity and the refinement of one idea and the production of a final piece		
Limited effectiveness		A mature and highly effective process, nothing detracts from what the candidate wants to achieve in terms of continuity and the development of the theme leading to the production of a final piece.
Partially effective		
Effective		
Highly effective	✓	
Section 2 - Expressive Portfolio - Skills		
Creatively and skilfully using appropriate materials, techniques and/or technology in response to their theme/stimulus		
Limited effectiveness		The candidate's choice and use of media is relevant and highly effective across the portfolio. The media experimentation allows them to make creative decisions about the best materials and approaches to use for their final piece.
Partially effective		
Effective		
Highly effective	✓	
Creatively and skilfully using appropriate visual elements and expressive effects in response to their theme/stimulus		
Limited effectiveness		There is a highly effective refinement of the candidate's use of colour and texture as the portfolio develops shown in the confident use of loose brushwork and saturated colour. Subtle changes to composition and the change of scale used in the final piece are highly effective in responding to the theme.
Partially effective		
Effective		
Highly effective	✓	
Section 3 - Expressive Portfolio - Evaluation		
Giving a justified critical evaluation of the effectiveness of decisions and the visual qualities of their expressive portfolio with reference to their theme/stimulus		
Limited critical evaluation		The evaluation is well written and focussed. The candidate details each stage of their decision making process in terms of the concept, media, techniques and effectiveness using fully justified evaluative comments.
Partially justified critical evaluation		
Justified critical evaluation		
Fully justified and detailed critical evaluation	✓	