

Candidate 3 - Academia

Higher Art and Design Expressive portfolio - evaluation

Candidate name: _____ Candidate number: _____

Centre no. 2022

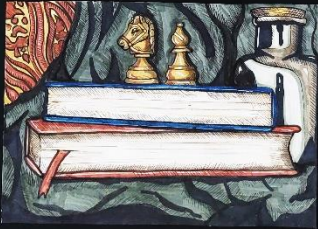
Instructions for candidates

You should reflect on and critically evaluate the creative process you followed when working through your expressive portfolio. In your reflective journal, personal appraisal is required. You should address your work in relation to your portfolio, including:

- The effectiveness of your work in relation to your portfolio.
- The effectiveness of the visual language of your portfolio in reflecting to your chosen audience.

This evaluation must be submitted on the 1st or 2nd week of your expressive portfolio project. It is not done by the teacher or the Examiners.

The aim of this evaluation is to provide a structured opportunity for you to reflect on your work and to provide a structured opportunity for you to reflect on your work. The focus is on the process of your work, not the final product. The focus is on the process of your work, not the final product. The focus is on the process of your work, not the final product.



SHEET 2 OF 3



Process	10/10
	27/30
Skills	22/25
	23/25
Sub-total	82/90
Evaluation	6/10
TOTAL	88/100

Higher Art and Design

Expressive portfolio – evaluation

Candidate name:

Candidate number:

Centre number:

Instructions to candidates

You should reflect on and critically evaluate the creative process you followed when working through your expressive portfolio. In your evaluation give justified personal opinions on:

- ◆ the decisions you made when working through your portfolio
 - ◆ the effectiveness of the visual qualities of your portfolio, referring to your theme/stimulus
- (10 marks)

This evaluation must be submitted on the first sheet of your **expressive portfolio**.

Please do not amend the format of this document.

For my portfolio I decided to use objects surrounding academia as I liked the idea of each object representing a different section of academia. The fabric represents the arts, the books literature, the potion bottle for the sciences and the chess pieces for how joy can be found in academia. I attempted to use different medias throughout my studies to discover what worked best for me. For the study of the fabric, I used watercolour as I believed I would be able to build layers of the red detailing and be able to correct any mistakes as watercolour is easy to lift off the paper. However, I did find that using watercolour it meant that some of the red details were not as crisp as I had wished as the watercolour had bled out of the lines. I then attempted to create a study of the bishop chess piece using acrylic paints and pastels. I used the paint to create a base of shadows and mid-tones and then used the pastels to add highlights and details as it was easier to control and blend. This resulted in the study looking more realistic as the highlights were smooth and blended. I then attempted to move onto my study of the bottle. I decided on acrylic paint as it is easy to use and blend on a large area of one colour like the dark fabric. I was somewhat happy with the study but found that some of the paint had built up and created a grainy texture and I struggled to add the details as the paint was often too thick. By crosshatching the knight chess piece, I discovered that using pen was the medium I was most comfortable with as I found the ink easier to manipulate than paint and could go back at any time without worrying about issues like blending. I then moved on to my compositions. With the paint I struggled to create a realistic piece and the proportions were off as I struggled to stay within my sketches when using paint as when painting I was unable to keep the lines smooth. I also wished to place the objects in my compositions differently as to make a transition from the more creative subjects of academia (the arts and literature) to the more logical based objects like the chess pieces and bottle. I did however like the position of the books and how they created a leading line into the painting. For my next composition I worked with crosshatching with a watercolour background. By doing this I found that I wished to see some crosshatching in my final piece as like the control and depth it allowed however I wished for more opaque colouring in the objects. For the composition I kept the books in a similar position however moved the fabric, bottles and chess piece. However I decided this left too much negative space in the composition. In my next piece I used pens instead of watercolour and placed occasional crosshatching. This created a much bolder image as the colours were more vibrant. In my final piece I altered the composition so the chess pieces were closer to the front so they were clearer and more in proportion as in the last composition they were too small and looked out of place. I believe that this resulted in an image which showed my theme clearly.

Higher Expressive Portfolio Commentary

Candidate 3 - Academia

Section 1 - Expressive Portfolio - Process

This portfolio shows highly relevant and focused investigative research.

The investigative research is highly relevant, all the initial investigative studies are used throughout the portfolio and are clearly linked to the theme Academia

This aspect was awarded 10 of the 10 marks available.

This portfolio shows a highly effective, thorough, and focused single line of development demonstrating a high level of refinement leading to the production of a final piece.

The candidate has demonstrated a clear and effective single line of development with consideration given to the refinement of one idea. There is visual continuity in the choice and use of media and in object placement to explore composition and viewpoint leading to the production of a final piece.

This aspect was awarded 27 of the 30 marks available.

Section 2 - Expressive Portfolio - Skills

This portfolio shows highly effective creative and skilful use of appropriate materials, techniques and/or technology for visual effect in response to their theme.

The candidate has creatively and skilfully used a variety of different materials including a sensitive handling of paint and the use of cross hatching, in pen, to add form. Media handling improves as the portfolio develops. Small areas of drawing, especially of ellipses, are handled less effectively.

This aspect was awarded 22 of the 25 marks available.

This portfolio shows highly effective creative and skilful use of visual elements and expressive effects in response to their theme.

All studies are small in scale including the final piece, each show a subtle improvement as the portfolio progresses and a competent level of skill. Highly effective use of visual elements including colour and tone add to the mood and atmosphere in response to the portfolio theme. Composition and viewpoint have been considered in a creative way to draw the viewer into the work and highlight the narrative of the portfolio.

This aspect was awarded 23 of the 25 marks available.

Section 3 - Expressive Portfolio - Evaluation

This expressive evaluation shows justified critical evaluation of the effectiveness of decisions and the visual qualities of their portfolio, with reference to their theme.

The evaluation gives a clear insight into the symbolism of the subject matter chosen and provides a narrative of decisions made by the candidate. Several points are evaluated critically, others are more descriptive and lack justification. Further evaluative analysis would be required to gain full marks.

This evaluation was awarded 6 of the 10 marks available.

Total: 88 marks