



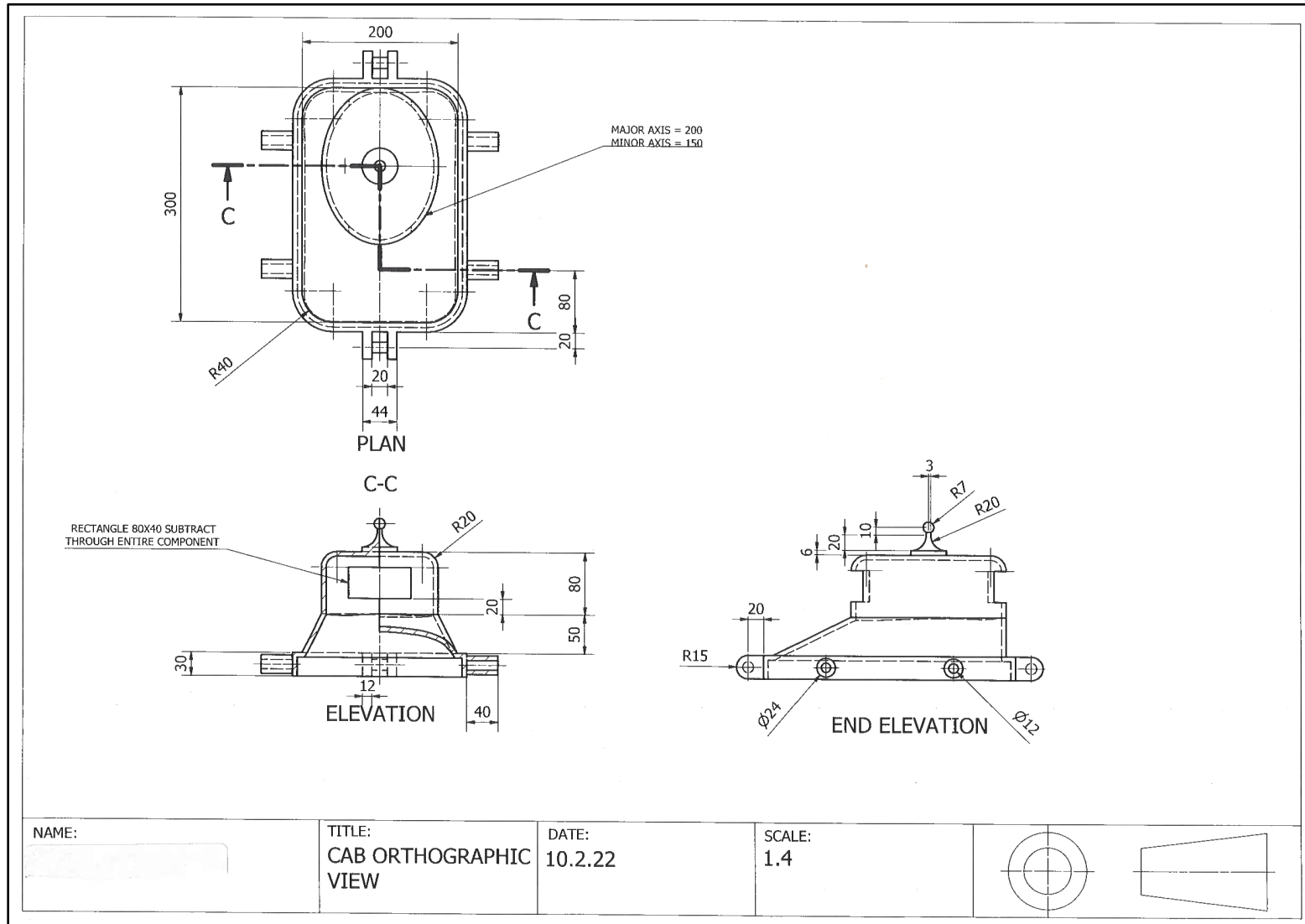
---

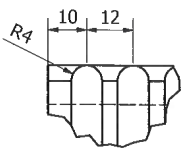
## **Graphic Communication (Higher): assignment**

---

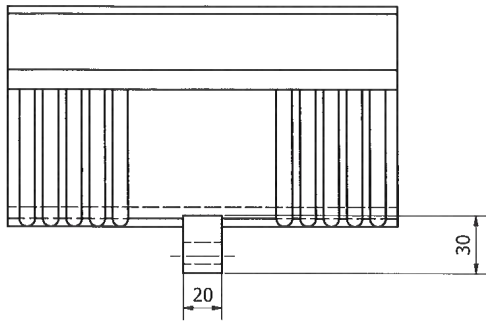
**Candidate evidence**

# Candidate 1 evidence

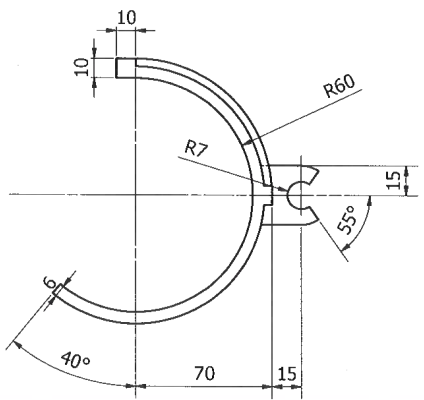




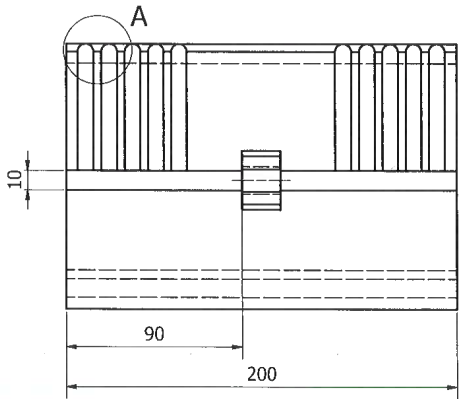
DETAIL A



PLAN



END ELEVATION



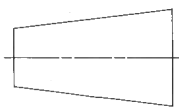
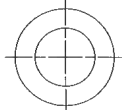
ELEVATION

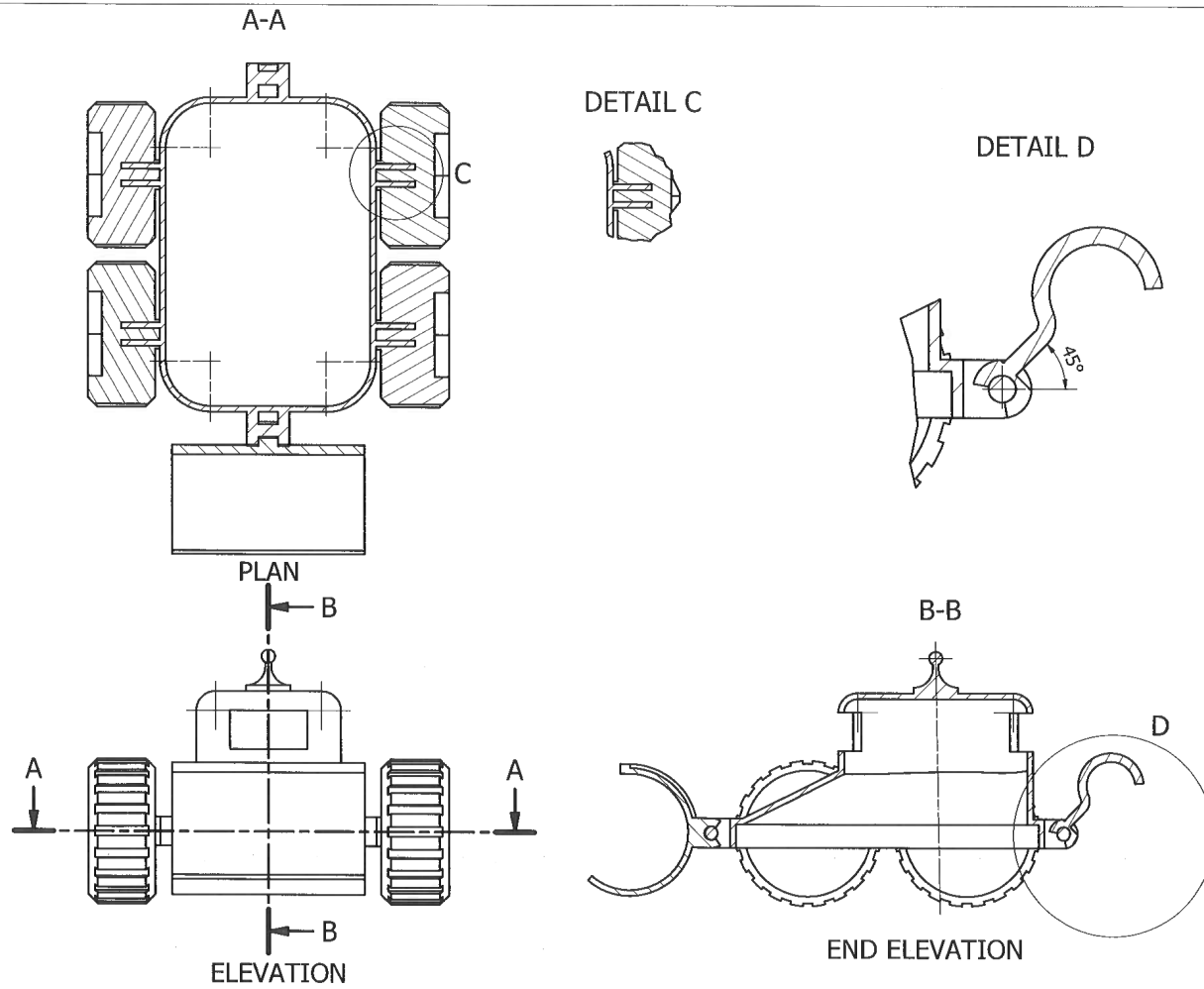
NAME:

TITLE:  
BUCKET  
ORTHOGRAPHIC  
VIEW

DATE:  
11.2.22

SCALE:  
1.2



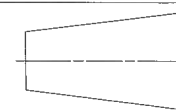
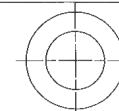


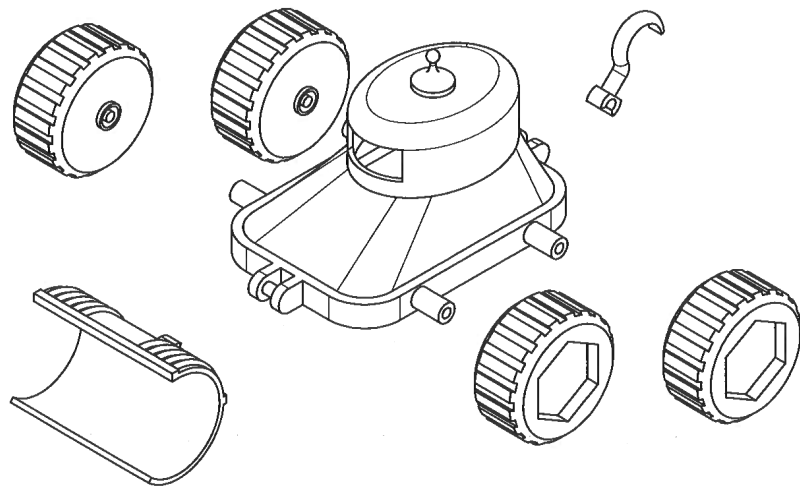
NAME:

TITLE:  
ASSEMBLED TOY  
ORTHOGRAPHIC  
VIEW

DATE:  
14.2.22

SCALE:  
1:4





NAME:



TITLE:

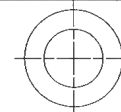
EXPLODED  
ISOMETRIC VIEW

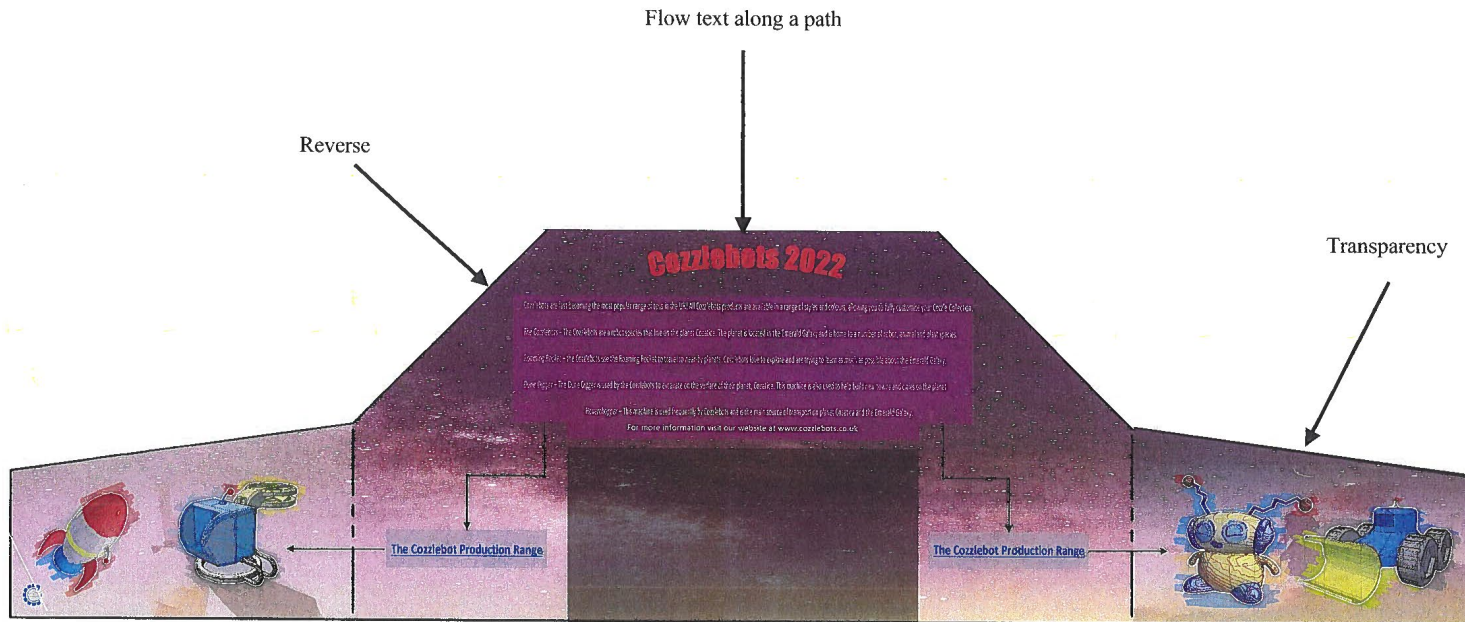
DATE:

18.2.22

SCALE:

1.4

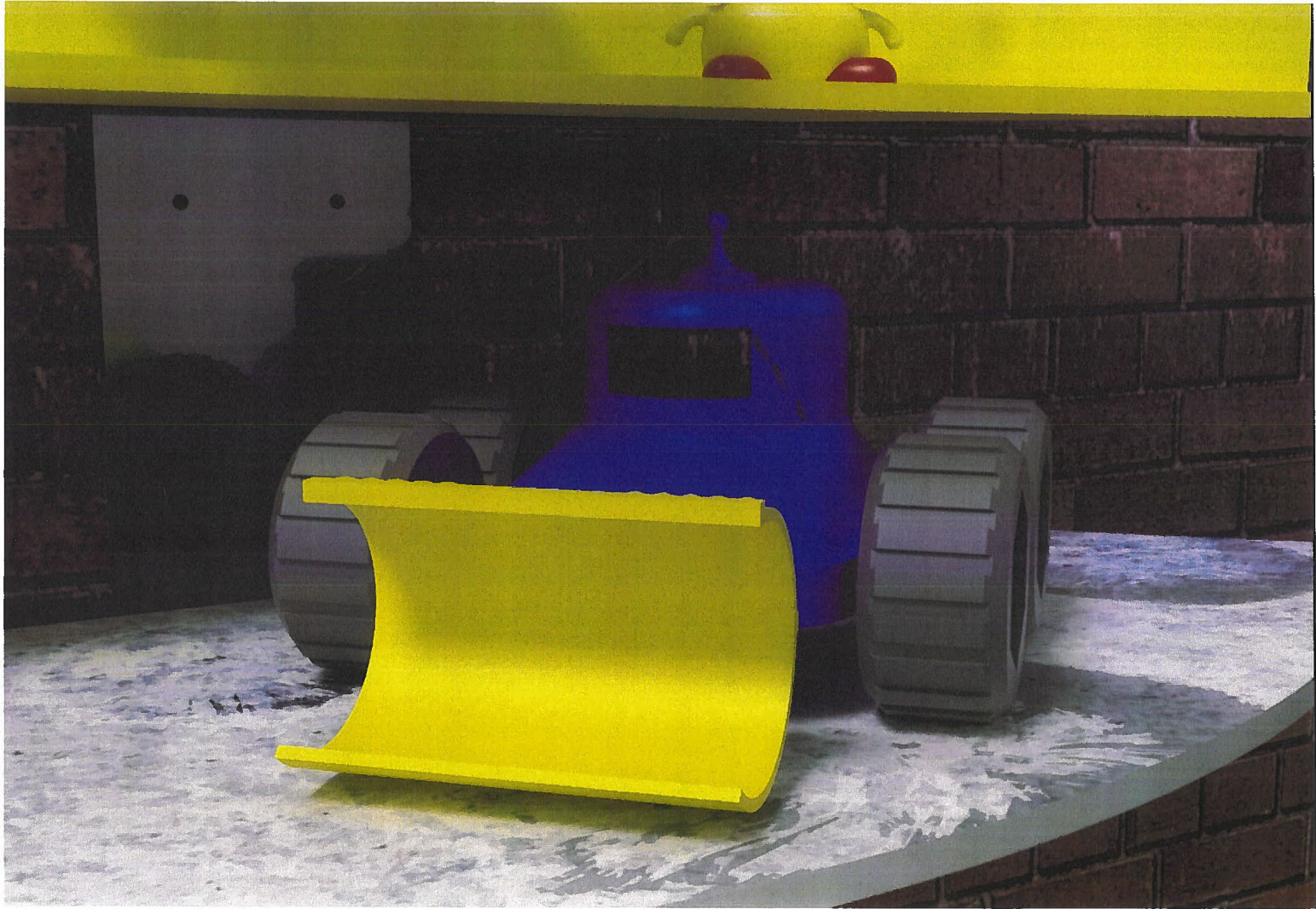


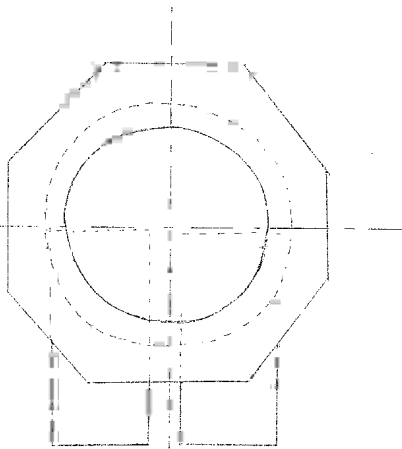


Balance- I used a symmetrical design throughout The layout which allows it to flow well an be easy And simple to look at. This allows it to reach its target Market of younger ages as they will be able to read and Follow it well.

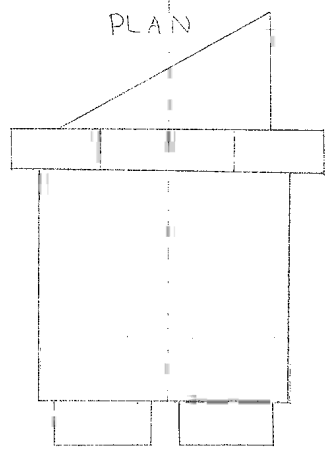
Texture- I used this in the box behind the main Text as this allows the text to stand out from the Background. This also allows the text to advance From the page as the texture catches the eyes of Viewers which then allows them to gain information on the Product which is being shown.



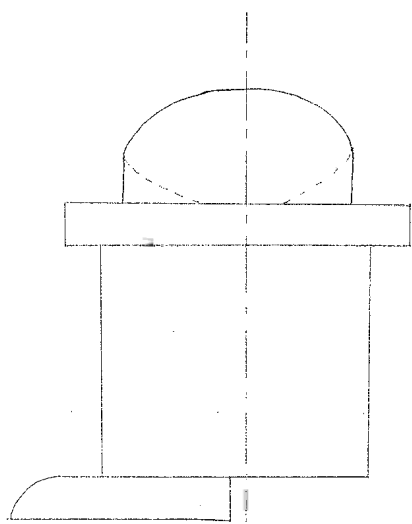




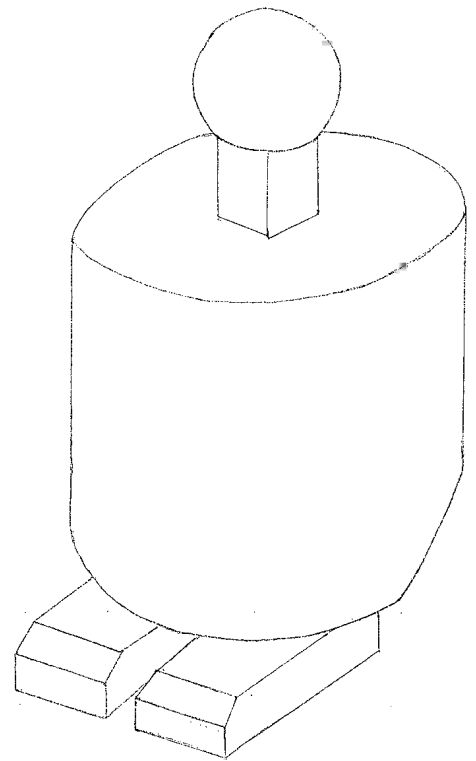
PLAN



ELEVATION



END ELEVATION



NAME: \_\_\_\_\_

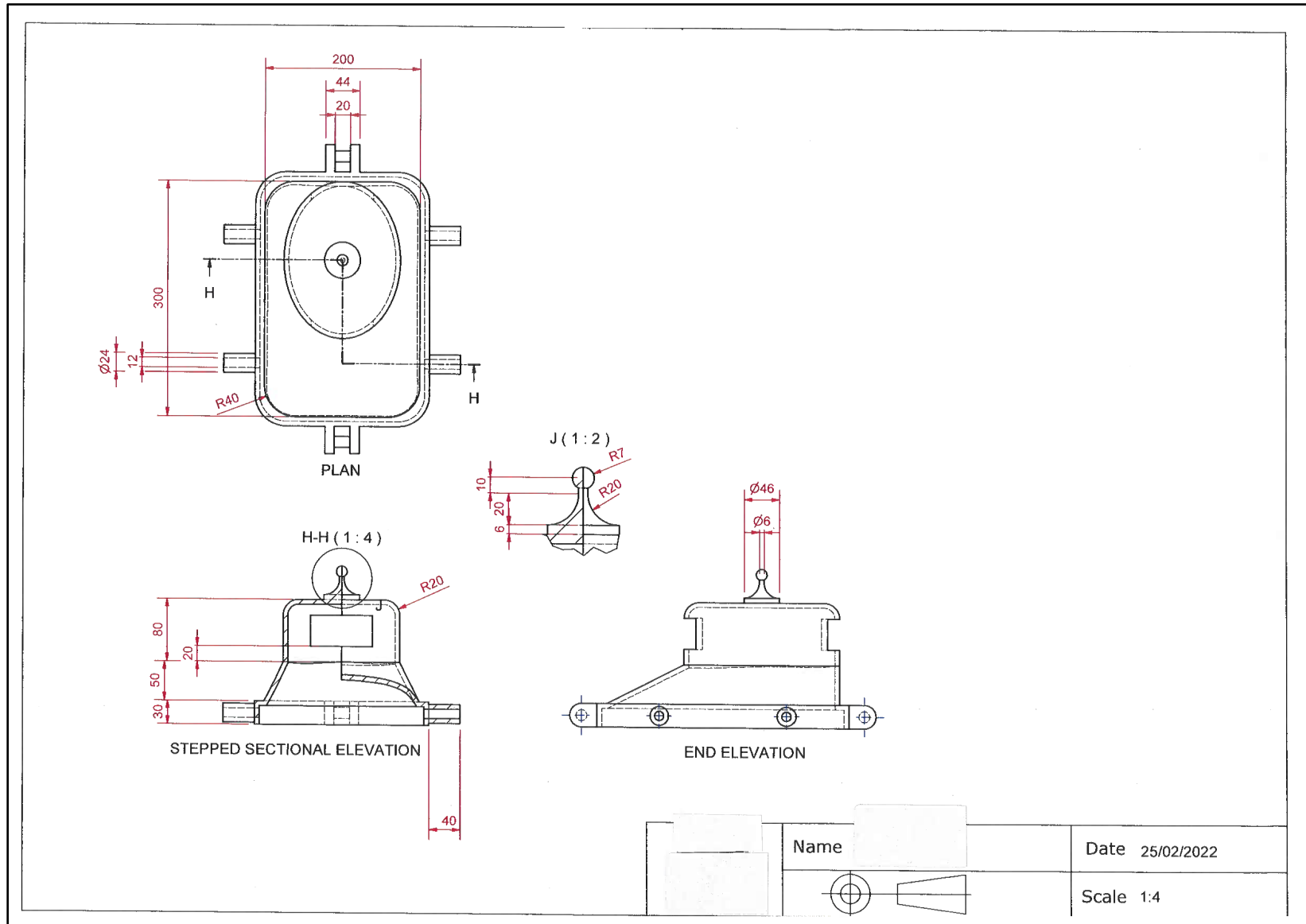
TITLE:  
COZZLEBOX PICTORIAL  
AND ORTHOGRAPHIC  
VIEW

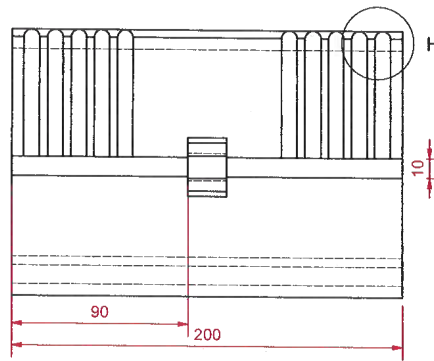
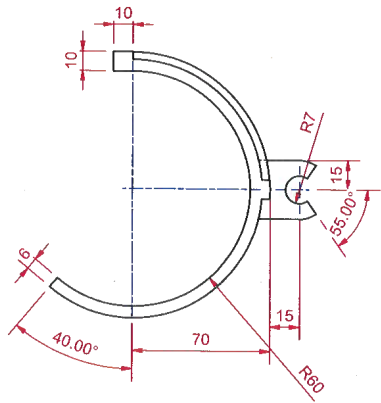
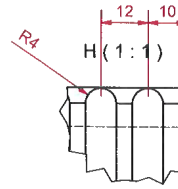
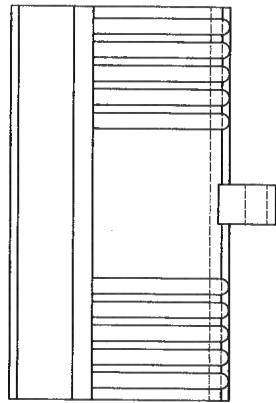
DATE:  
25/02/2022

SCALE:  
1:1 - ORTHOGRAPHIC  
2:1 - PICTORIAL



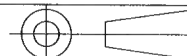
# Candidate 2 evidence



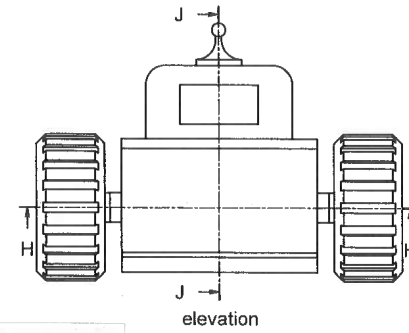
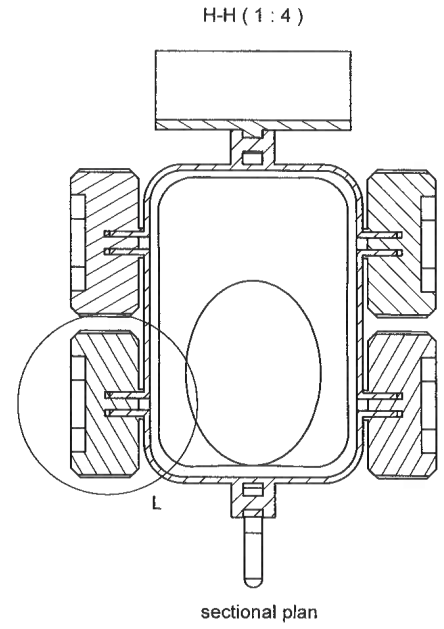
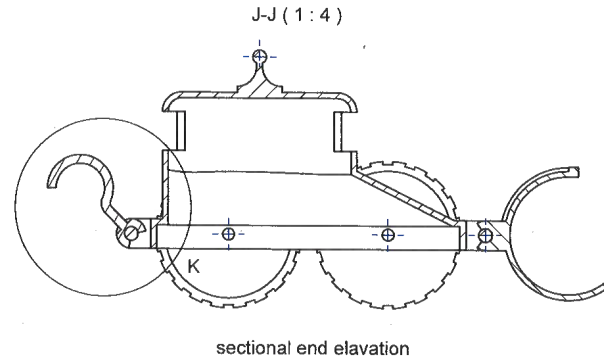
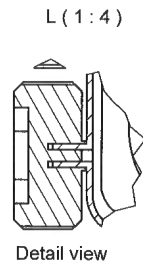
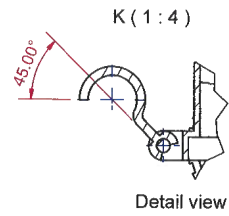


Name

Date

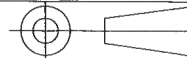


Scale 1:2

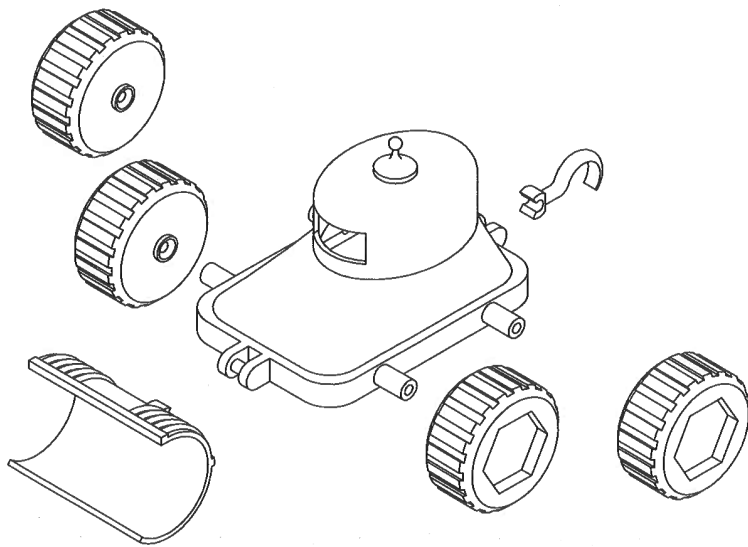


Name

Date 02/03/2022



Scale 1:2

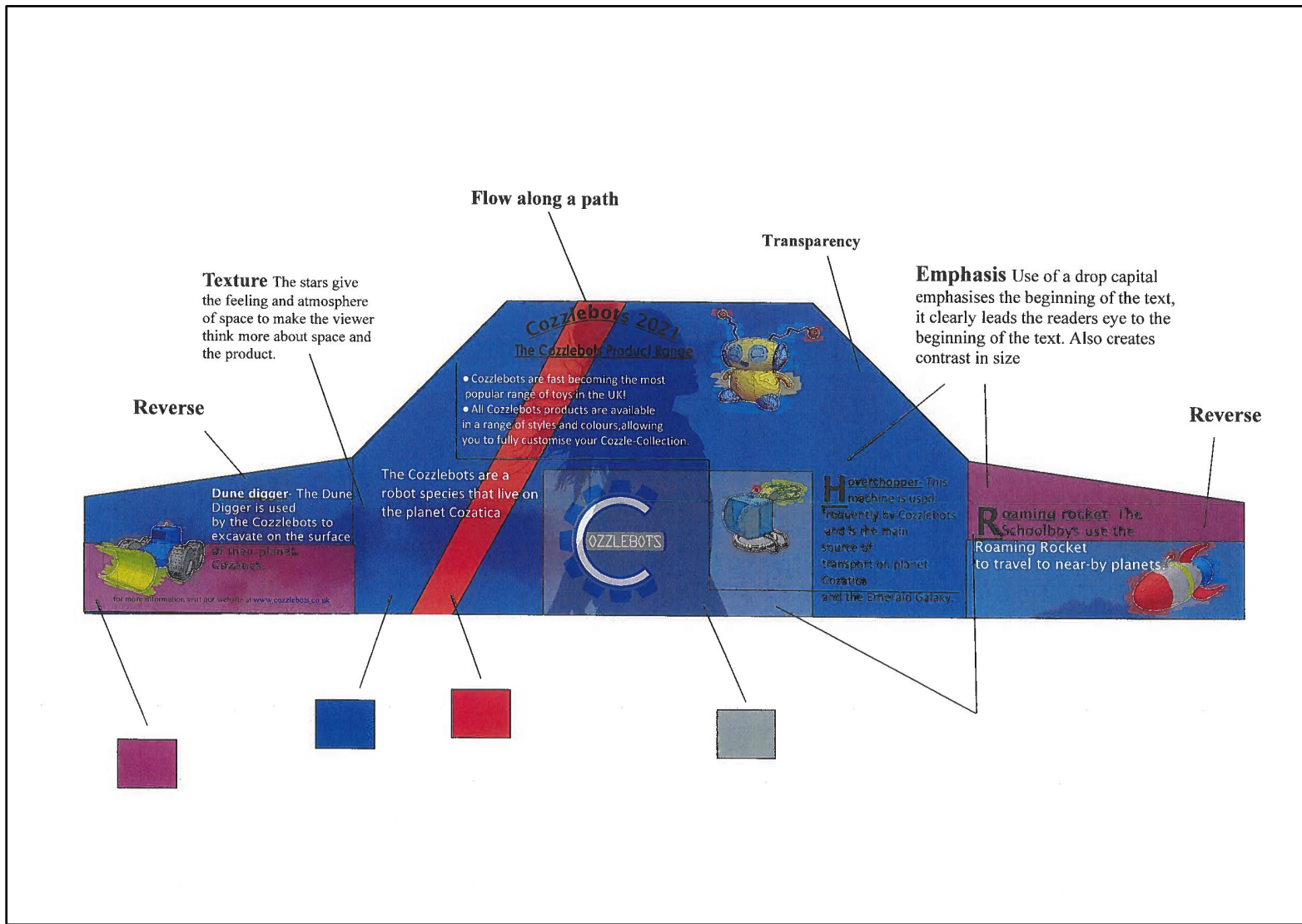


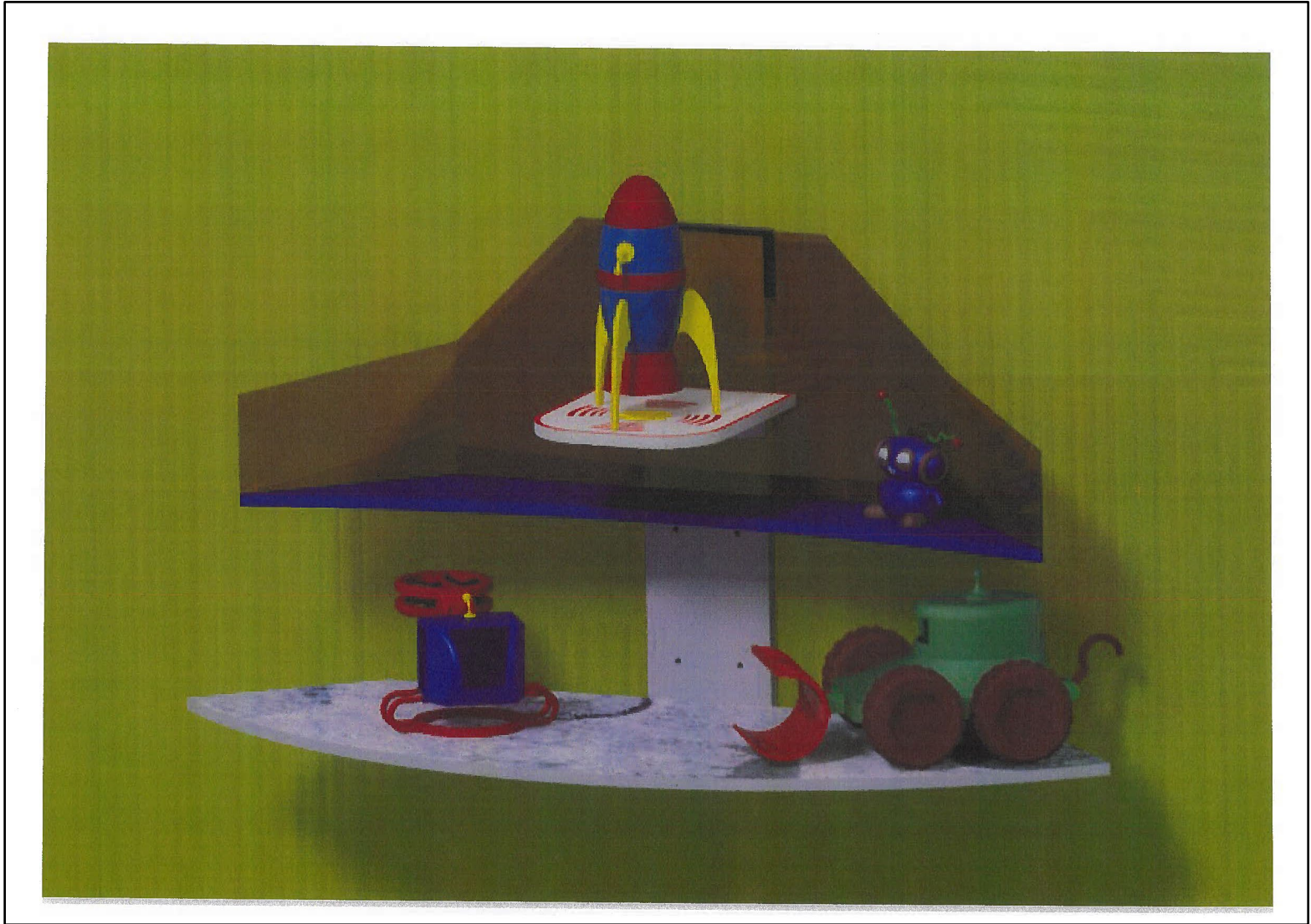
Name

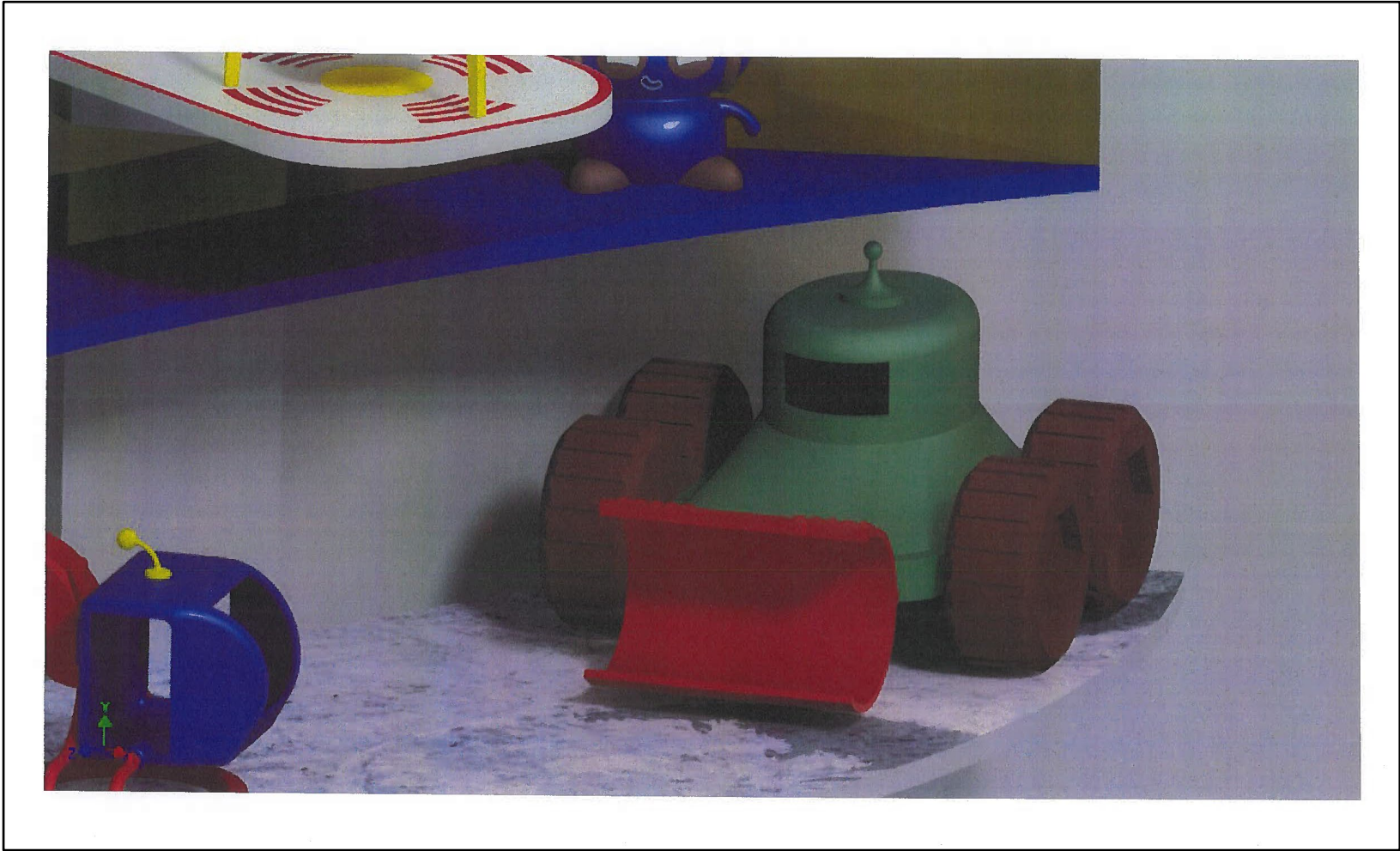
Date

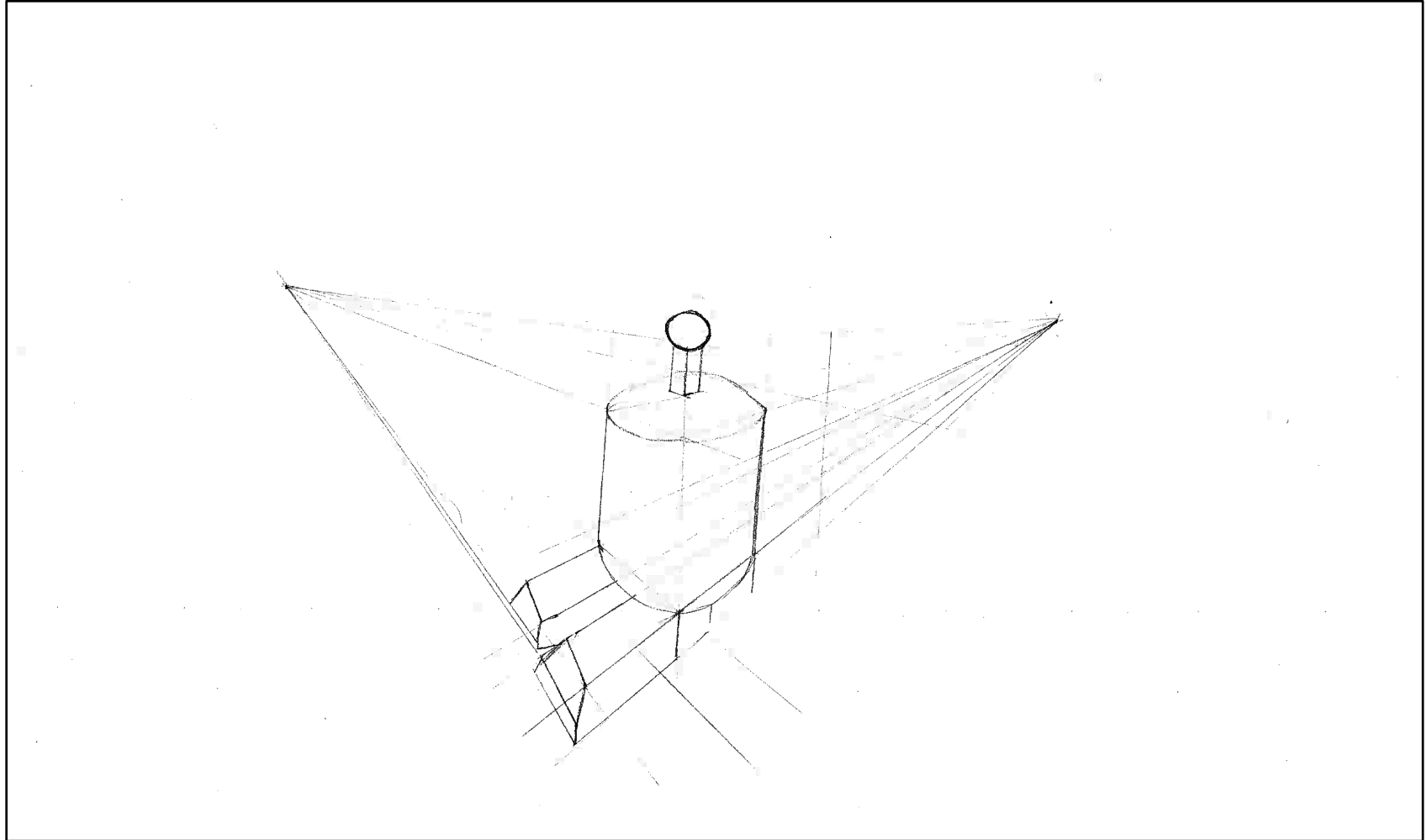


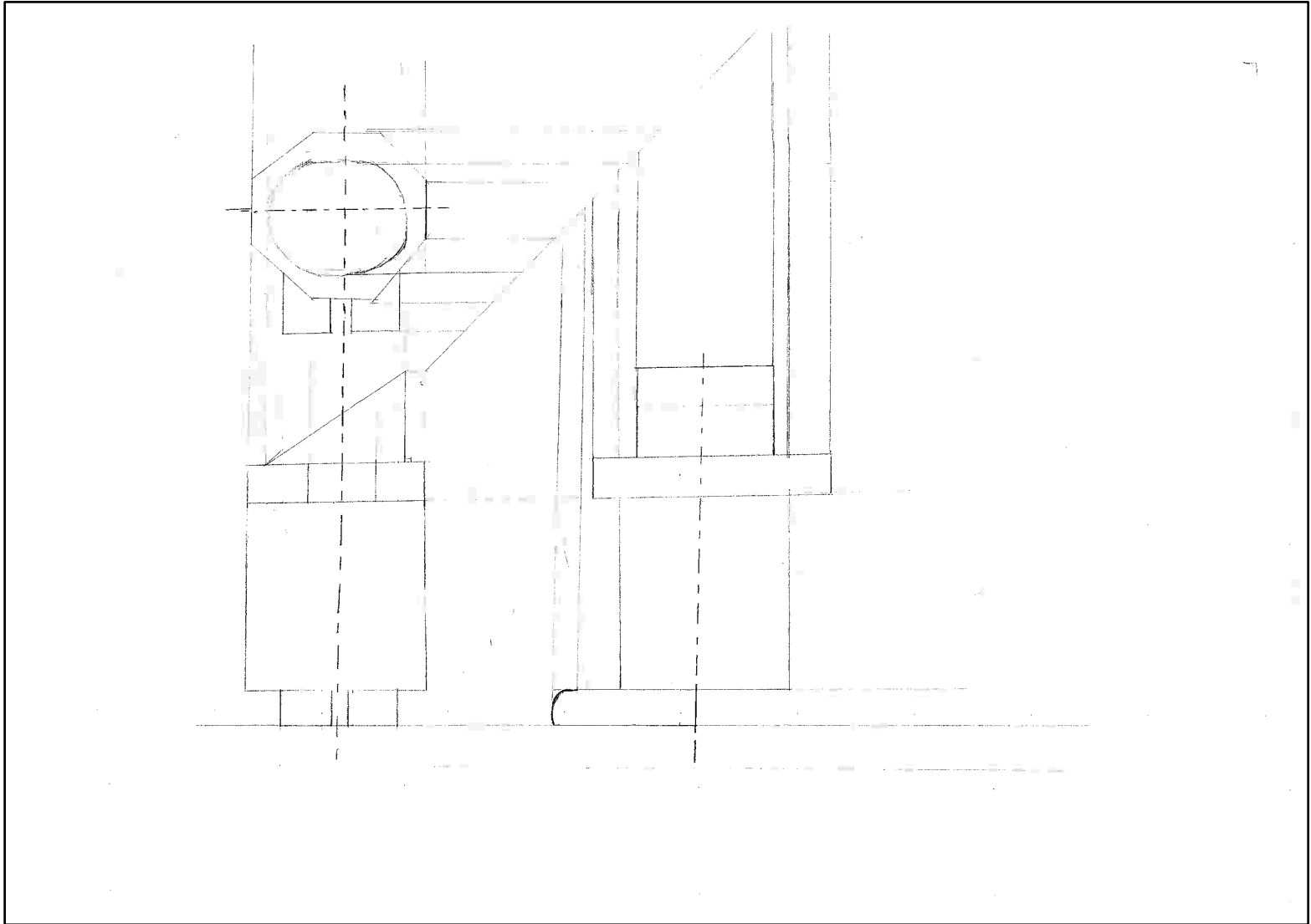
Scale 1:4



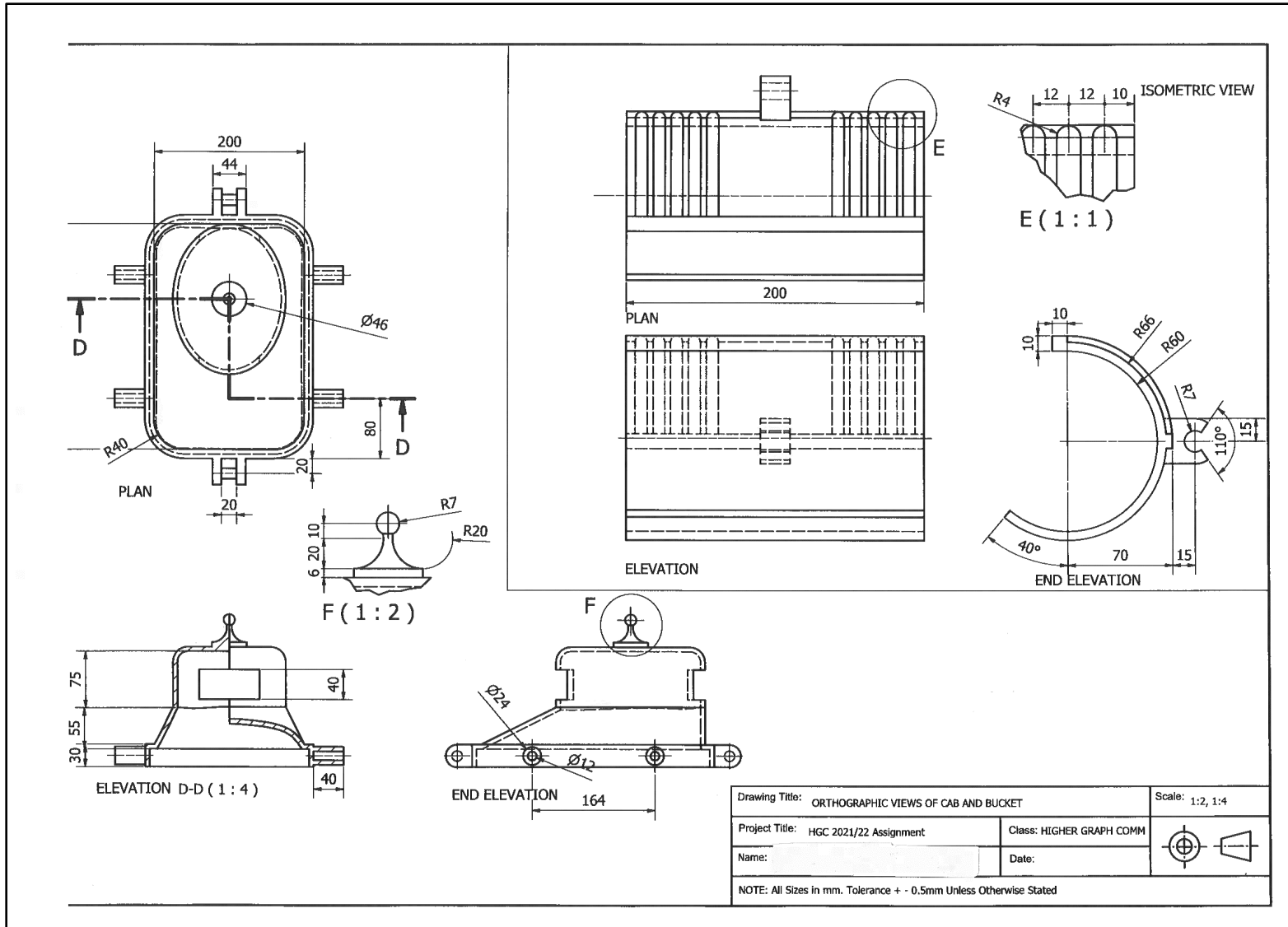


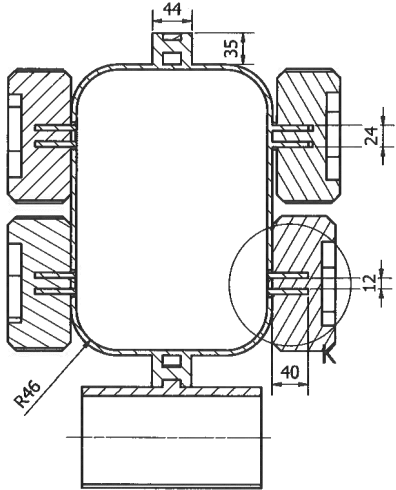




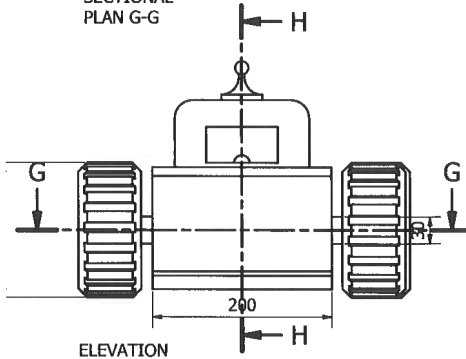


# Candidate 3 evidence

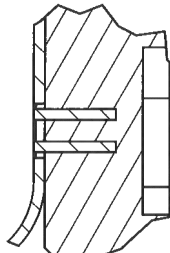




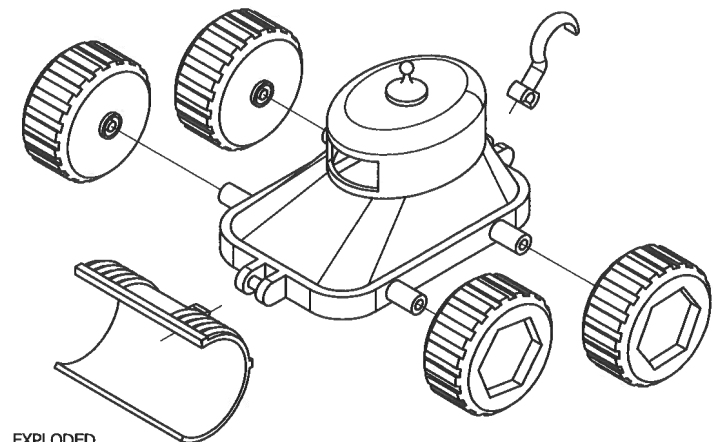
SECTIONAL  
PLAN G-G



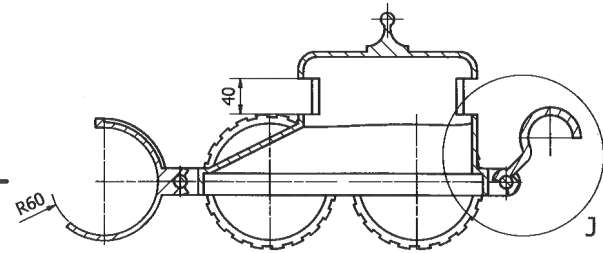
ELEVATION



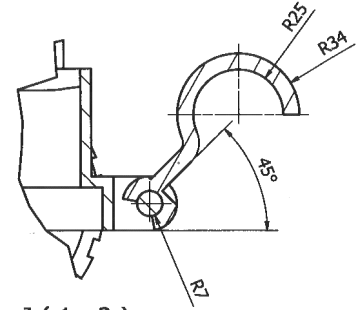
K (1:2)



EXPLODED  
ISOMETRIC OF  
BUGGY



SECTIONAL END  
ELEVATION H-H



J (1:2)

Drawing Title: ORTHO VIEWS AND SECTIONAL VIEWS OF ASSEMBLED BUGGY, DETAIL OF HOOK, EXPLODED ISOMETRIC		Scale: 1:2, 1:4
Project Title: HGC 2021/22 Assignment	Class: HIGHER GRAPH COMM	
Name: _____	Date: _____	
NOTE: All Sizes in mm. Tolerance + - 0.5mm Unless Otherwise Stated		

Value is created here by adding a white background that has now been made transparent to make the Cozzlebots logo highlighted and stand out therefore this adds emphasis to the logo.

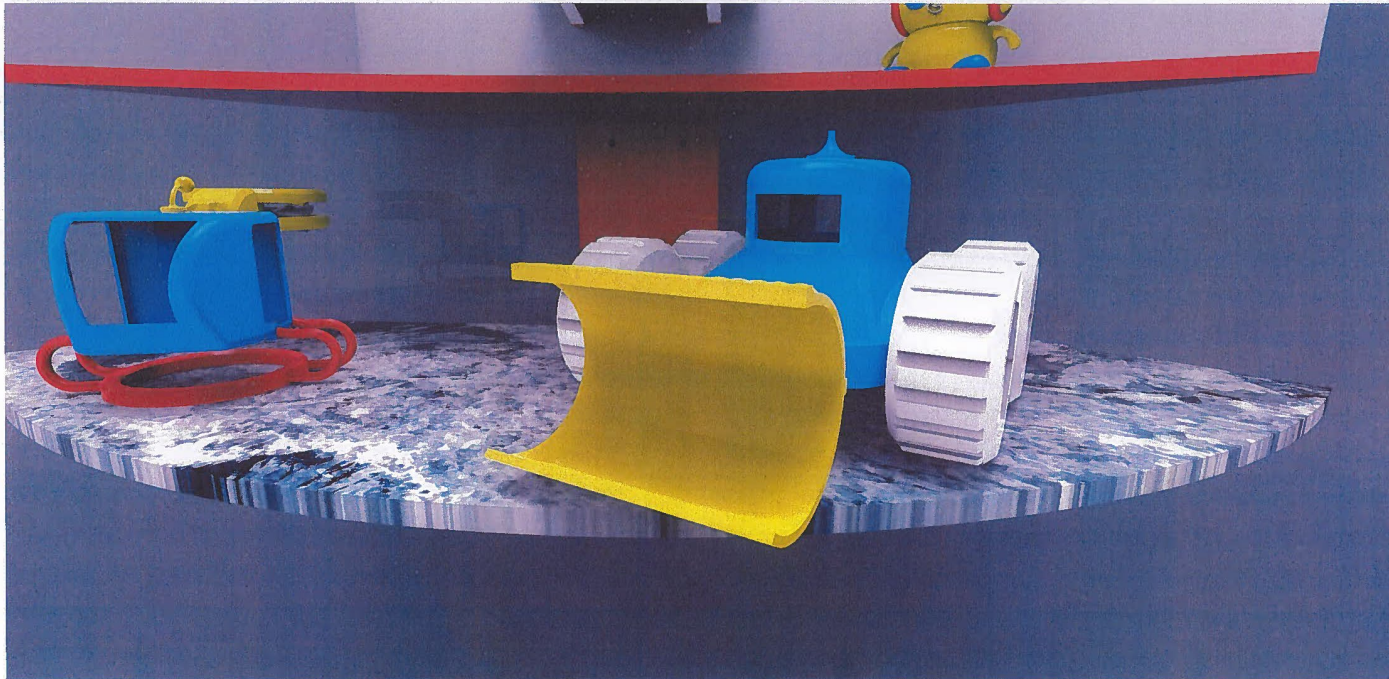
Reverse is added here as the white text has been put against a darker background this then adds emphasis as the text stands out.

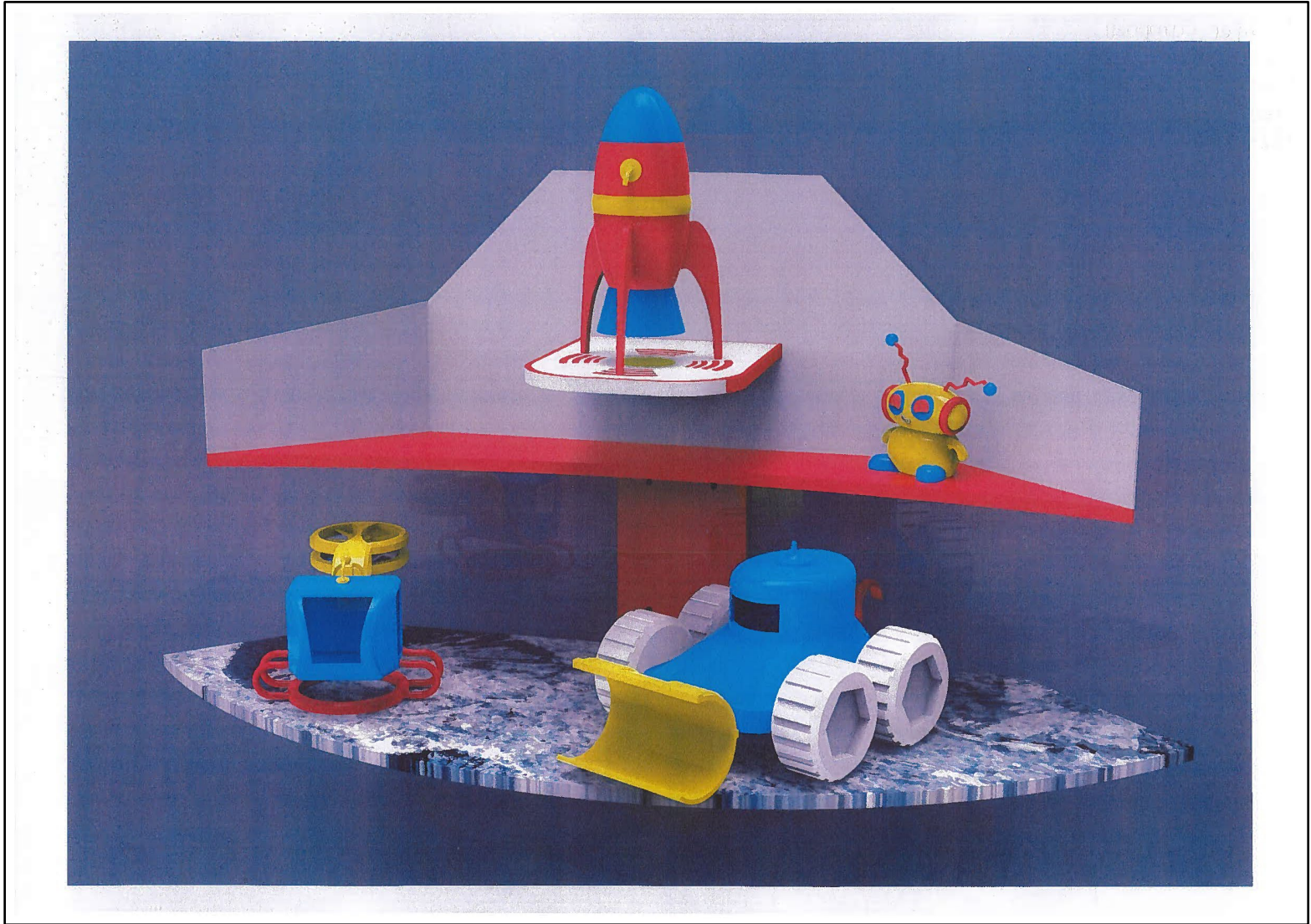
Repetition is added as at the start of each paragraph is a Saturn image. This then creates **rhythm** as it makes each paragraph stand out and link together to create harmony.

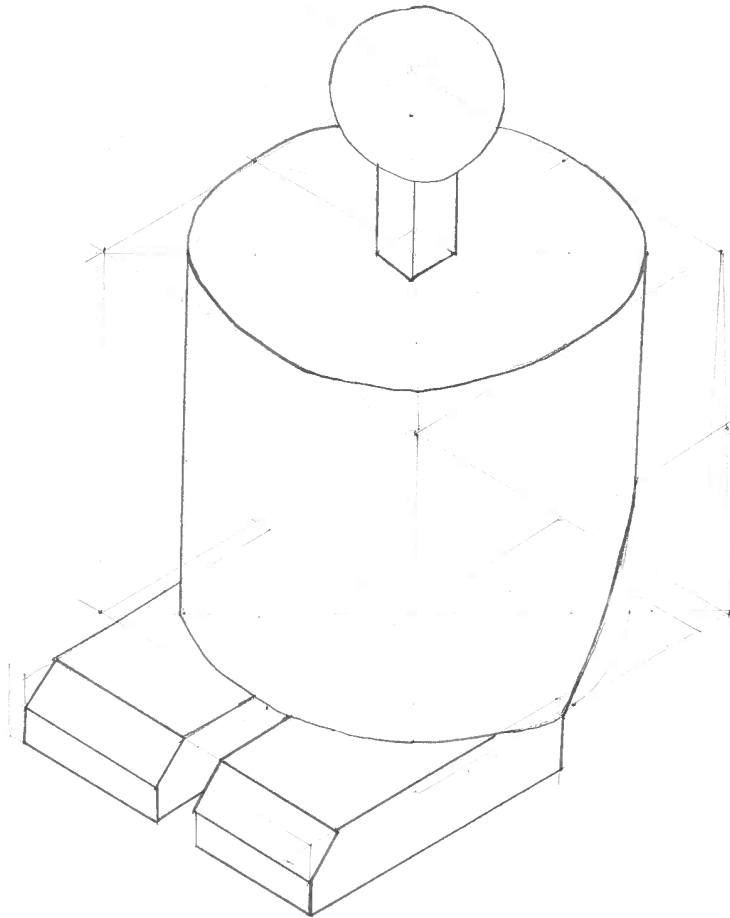


Flow text along a path has been used here to add shape and make the header flow around the writing.

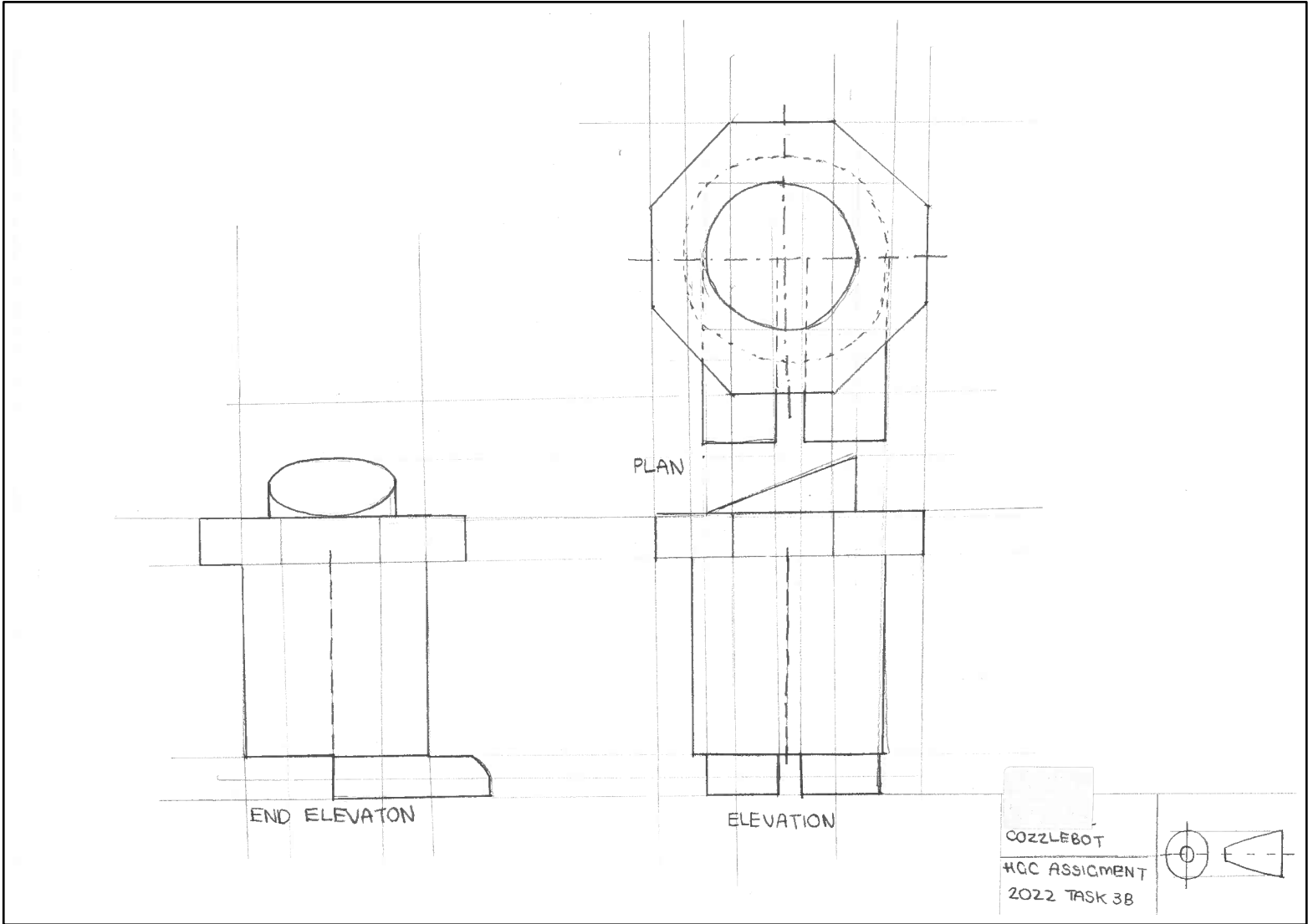
Transparency is added to the background with the use of the astronaut's helmet zoomed up then made transparent this then adds **texture** to the graphic as it blends in with the sky background.



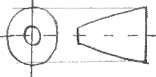




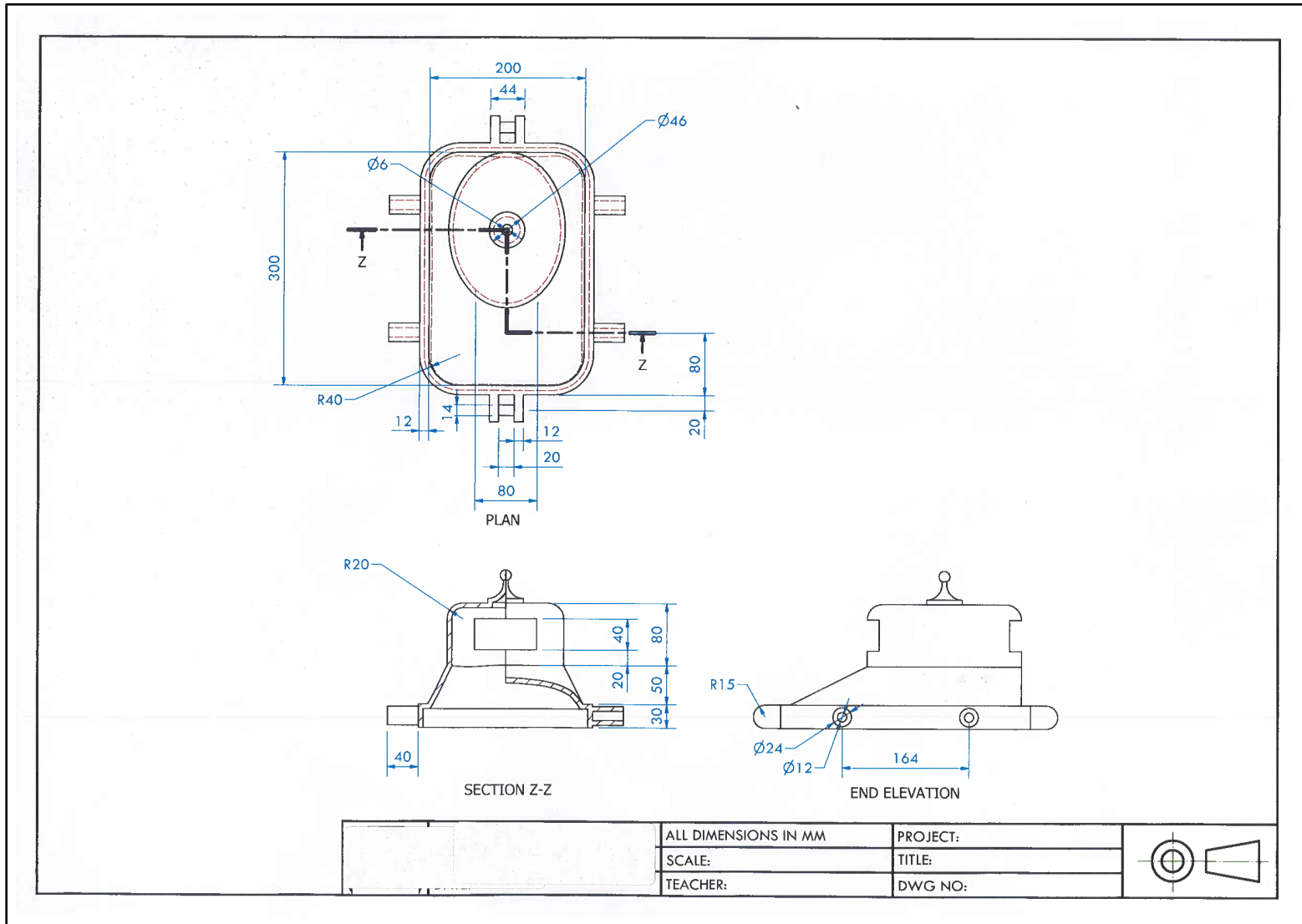
TASK 3a COZZIFBOTS	

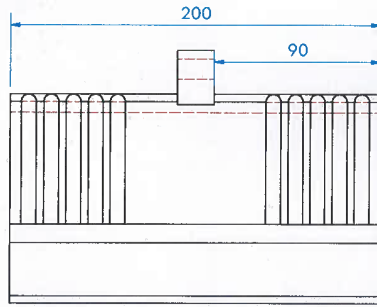


COZZLEBOT  
HGC ASSICMENT  
2022 TASK 3B

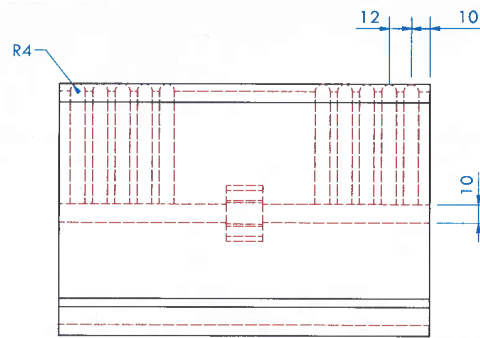


# Candidate 4 evidence

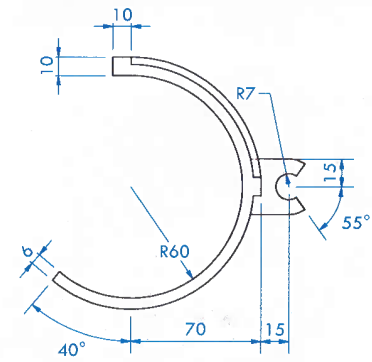




PLAN

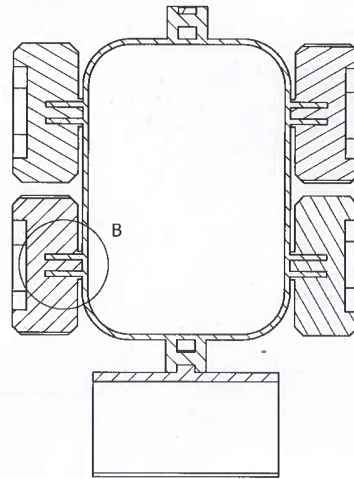
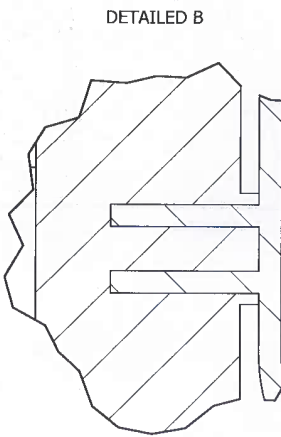


ELEVATION

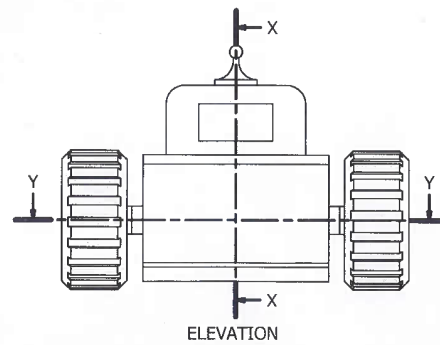
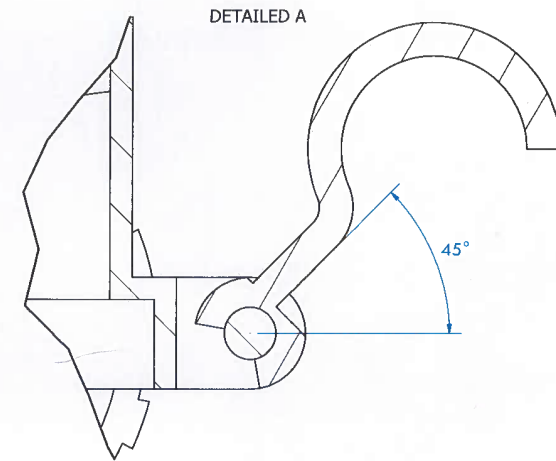


END ELEVATION

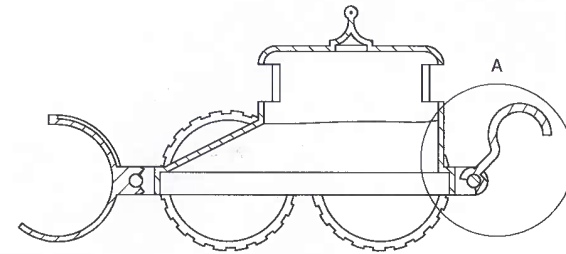
[Redacted Box]	ALL DIMENSIONS IN MM	PROJECT:	
	SCALE:	TITLE:	
	TEACHER:	DWG NO:	



SECTION Y

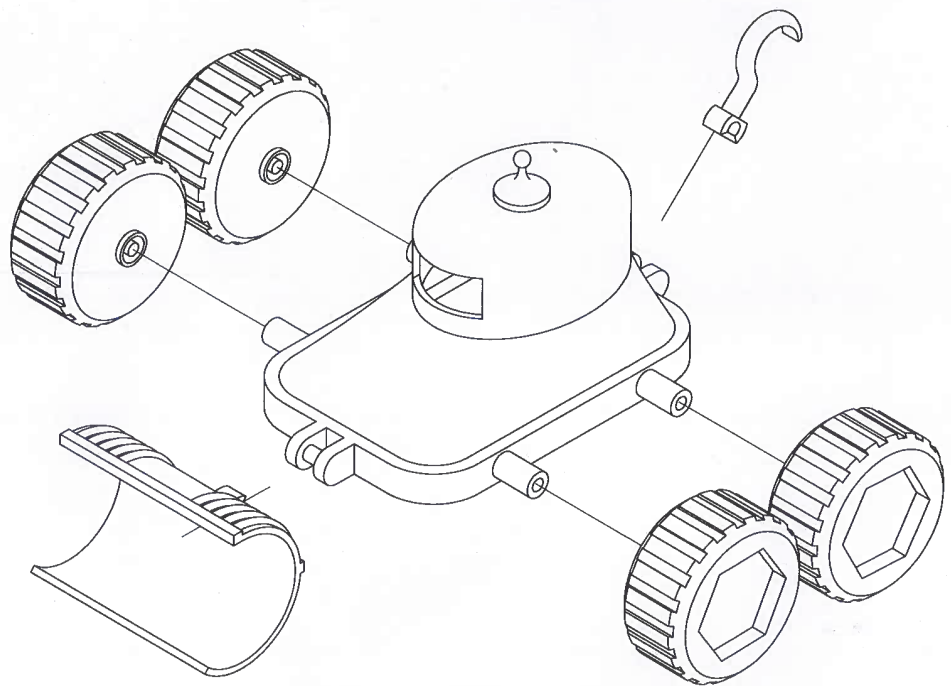


ELEVATION



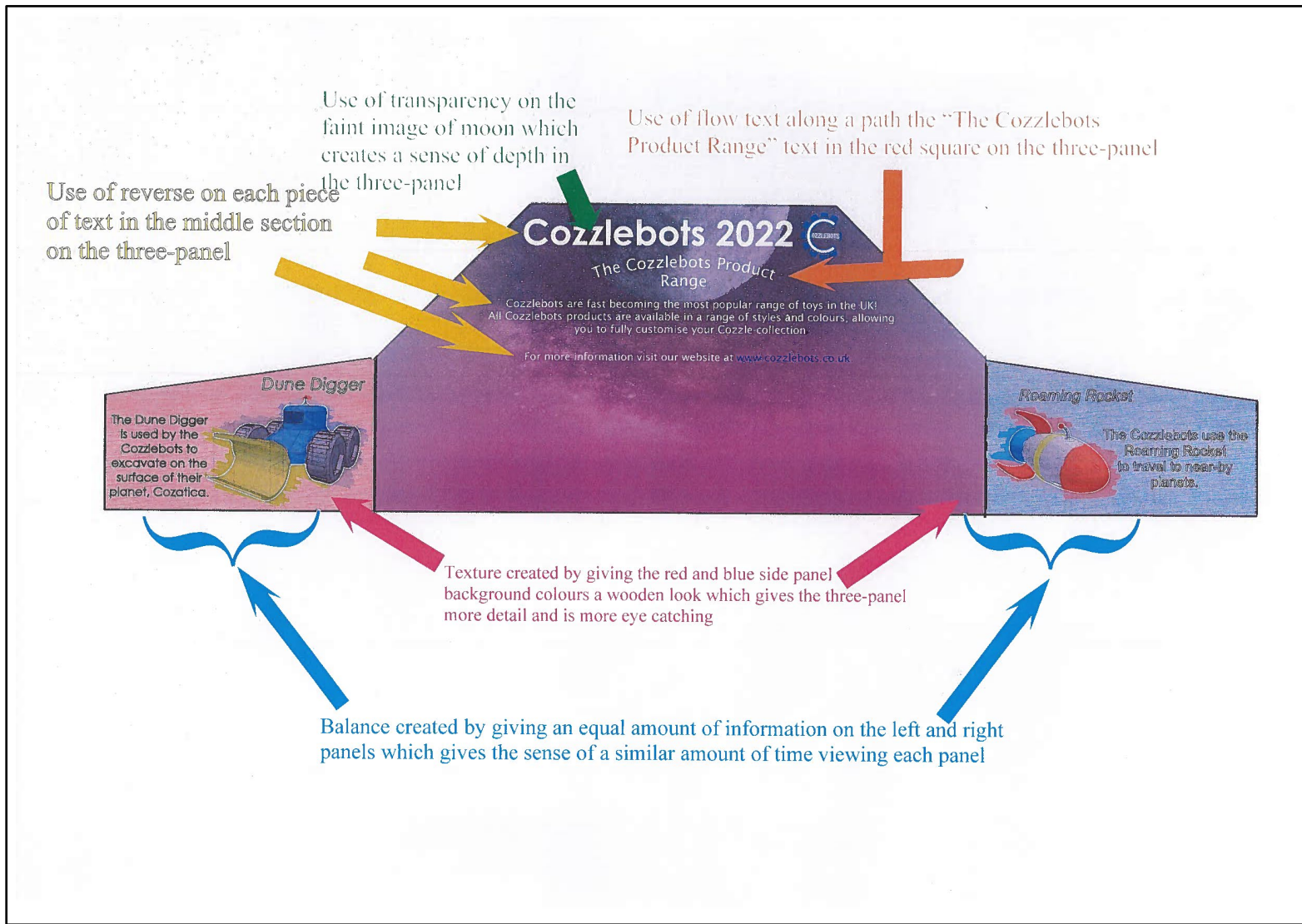
SECTION X

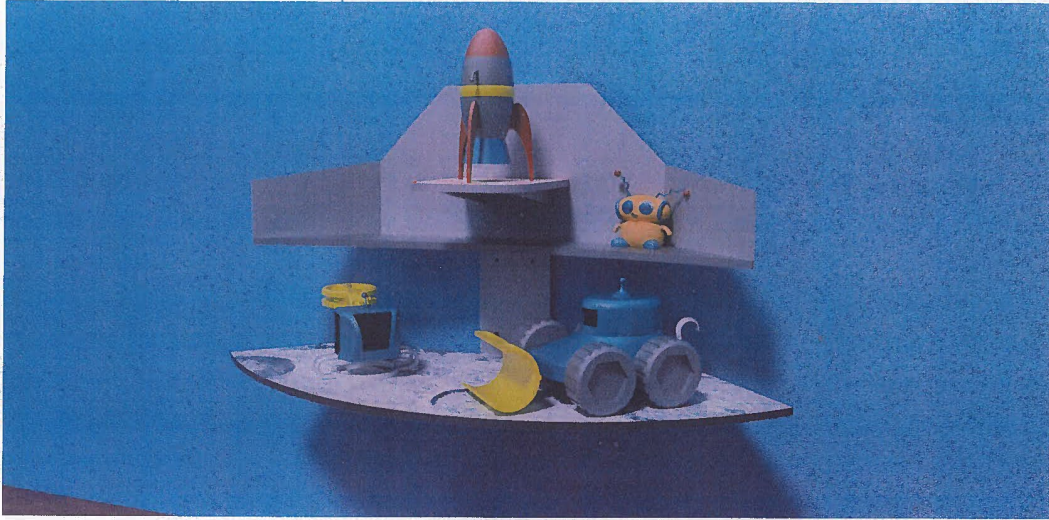
	ALL DIMENSIONS IN MM	PROJECT:	
	SCALE:	TITLE:	
	TEACHER:	DWG NO:	



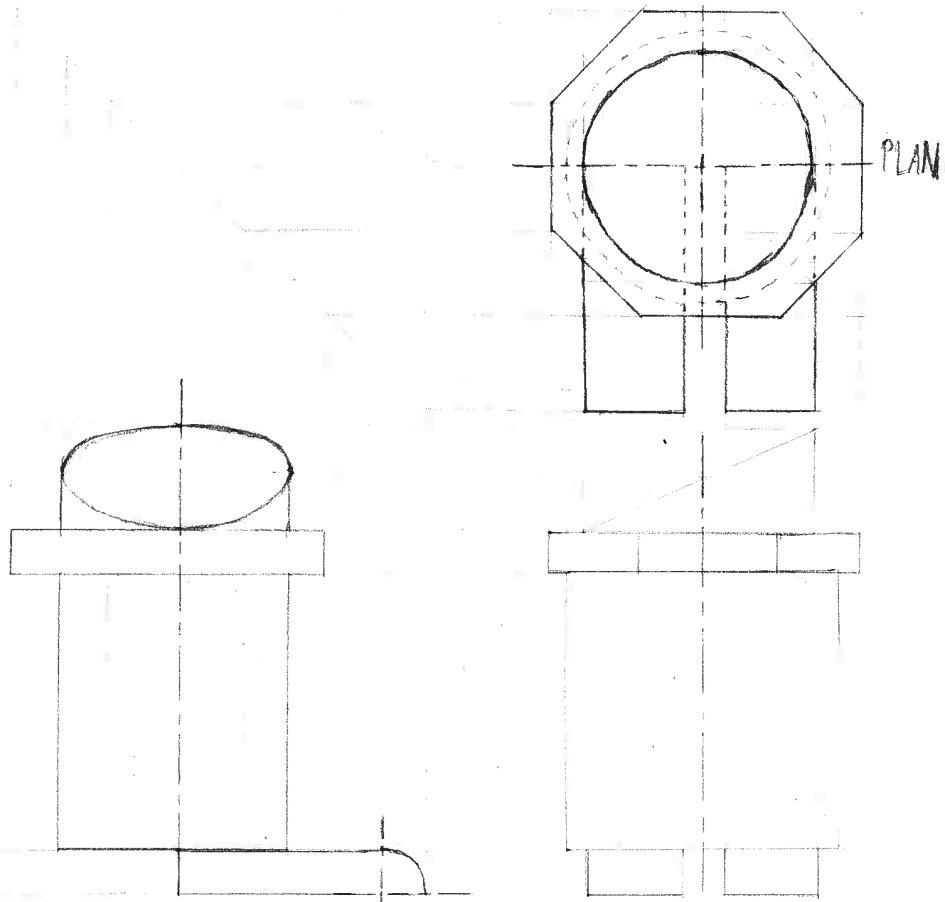
EXPLODED VIEW

DATE:	ALL DIMENSIONS IN MM	PROJECT:	
	SCALE:	TITLE:	
	TEACHER:	DWG NO:	





#1422



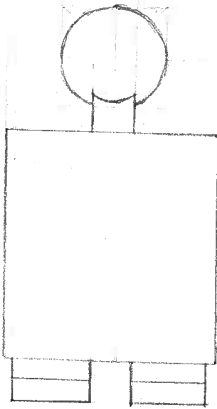
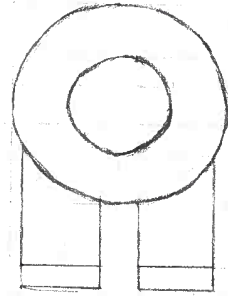
END ELEVATION

ELEVATION

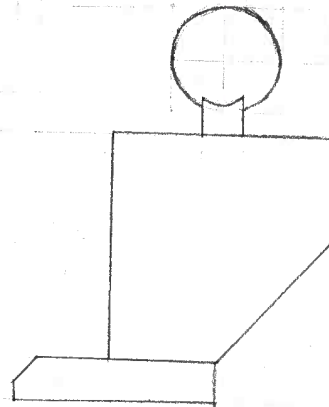
PLAN

8/31/22 → 22/3/22

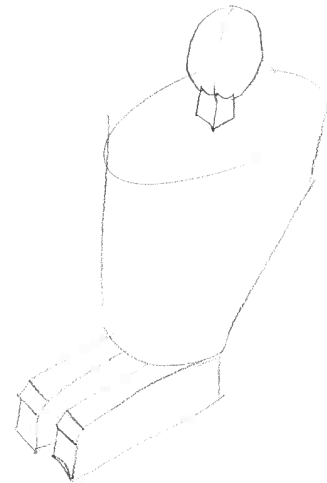
PLAN



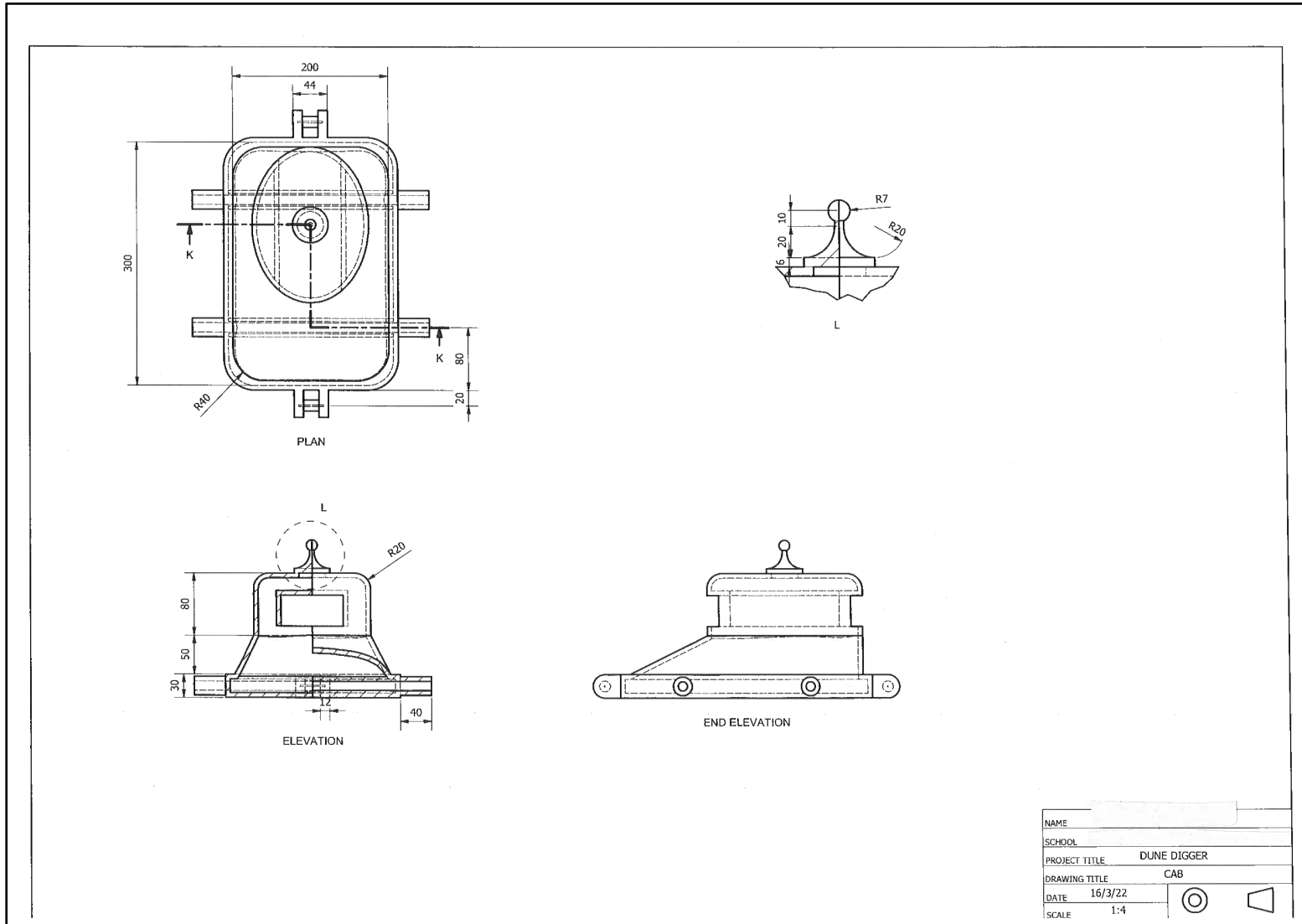
ELEVATION

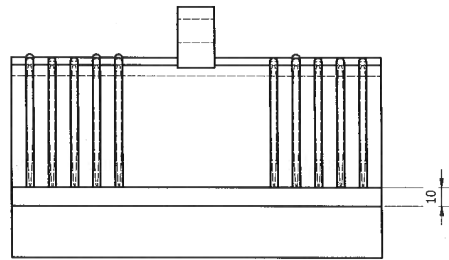


END ELEVATION

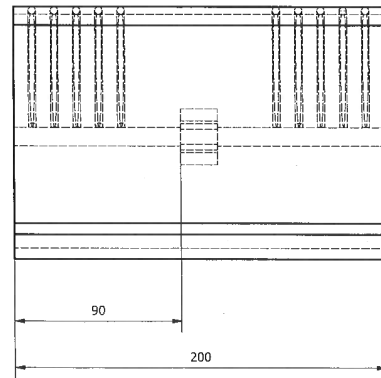


# Candidate 5 evidence

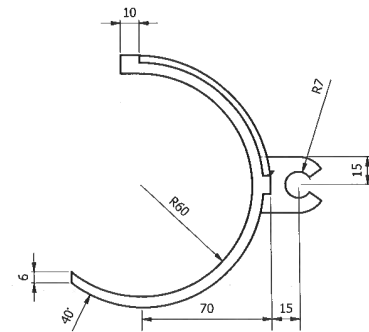





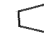
PLAN

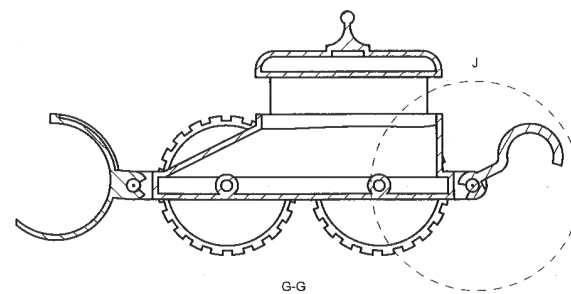
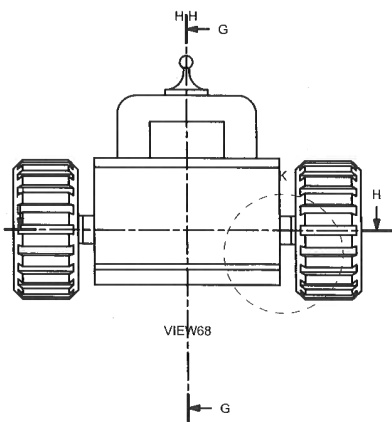
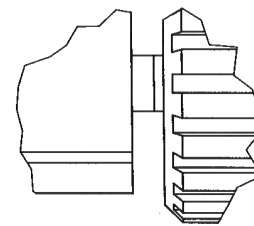
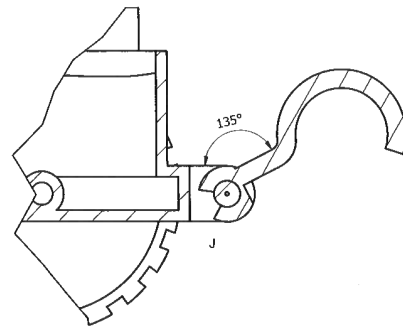
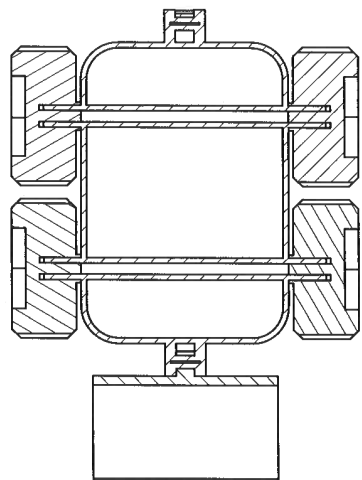


ELEVATION

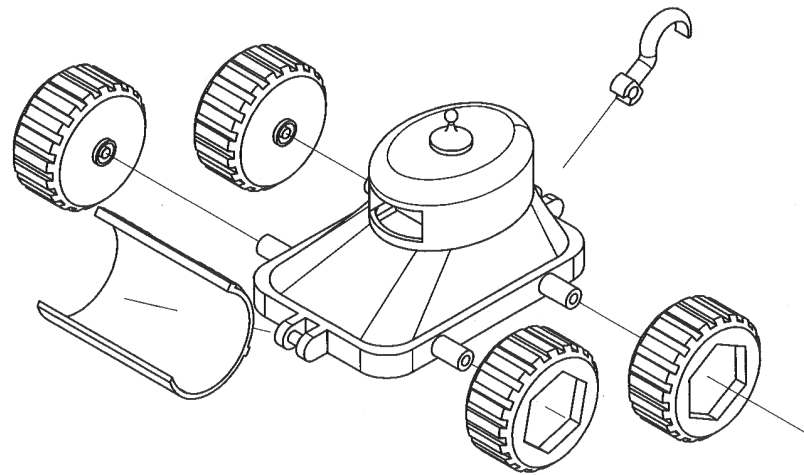


END ELEVATION

NAME		
SCHOOL		
PROJECT TITLE	DIGGER	
DRAWING TITLE	BUCKET	
DATE	16/3/22	
SCALE	1:2	 

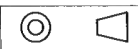


NAME	
SCHOOL	
PROJECT TITLE	2022 ASSIGNMENT
DRAWING TITLE	ASSEMBLY
DATE	18/03/22
SCALE	1:4



exploded

NAME	
SCHOOL	
PROJECT TITLE	DUNE BUGGY TOY
DRAWING TITLE	EXPLODED
DATE	28/03/22
SCALE	1:4



Balance- has been used  
With the same two images on  
each side of the shape to make the page  
symmetrical and appealing  
to look at

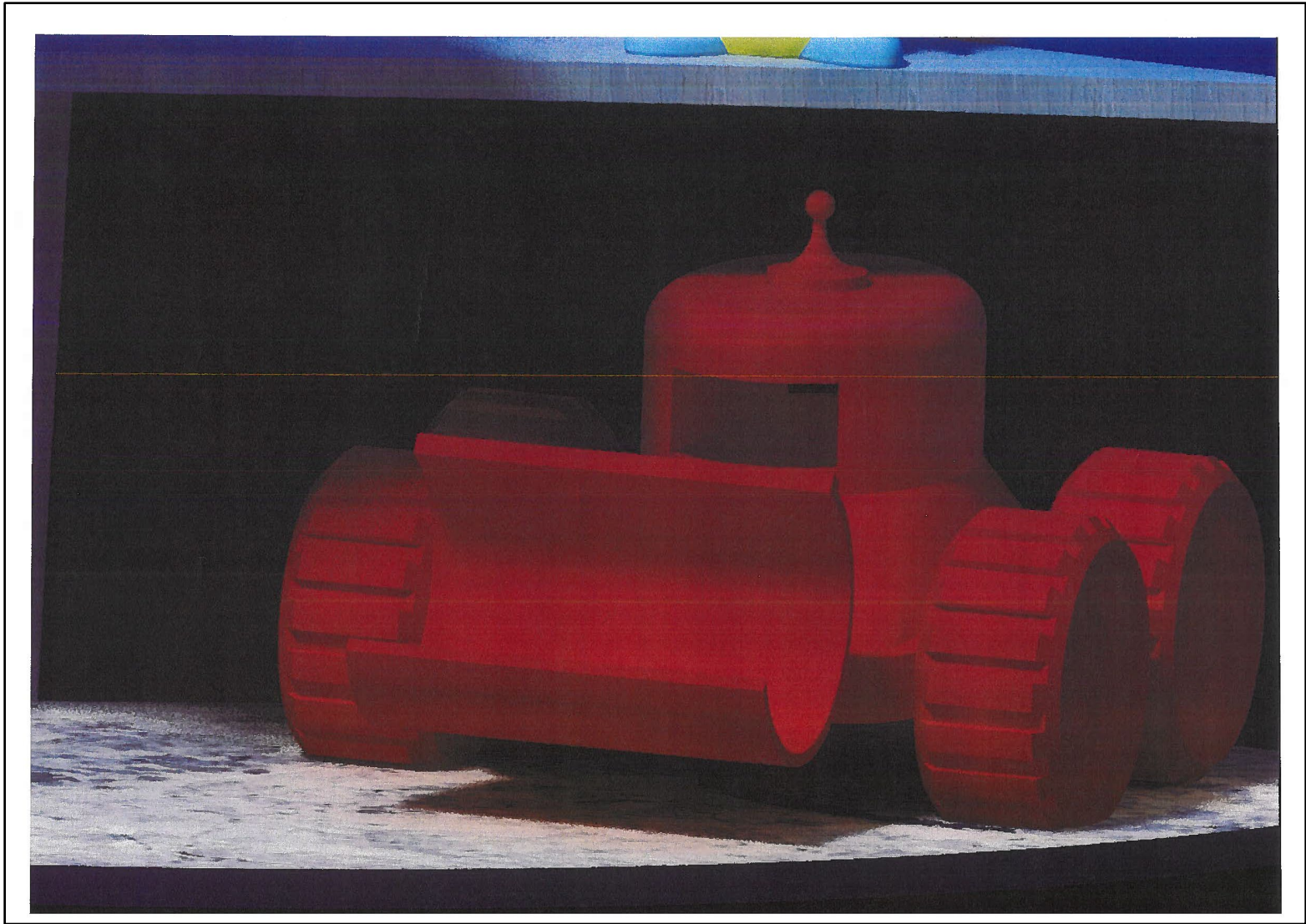
Reverse- has been used with  
the white text  
on the coloured backgrounds  
making it contrast with the page helping  
it to stand out

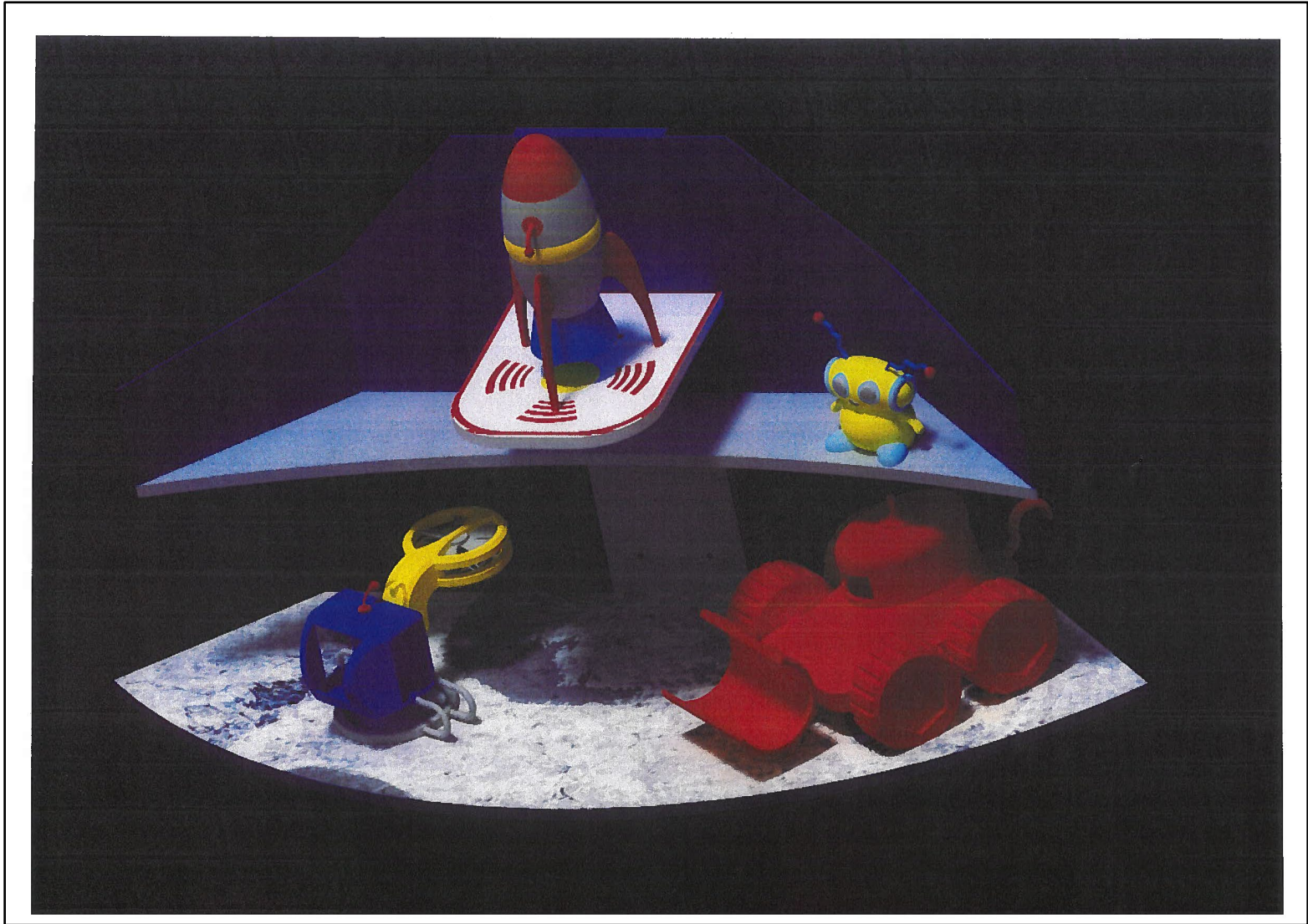
Flow text along a path- has been used  
with the logo and the headline helping  
it blend with the  
Page guiding you around the logo  
making it visually pleasing

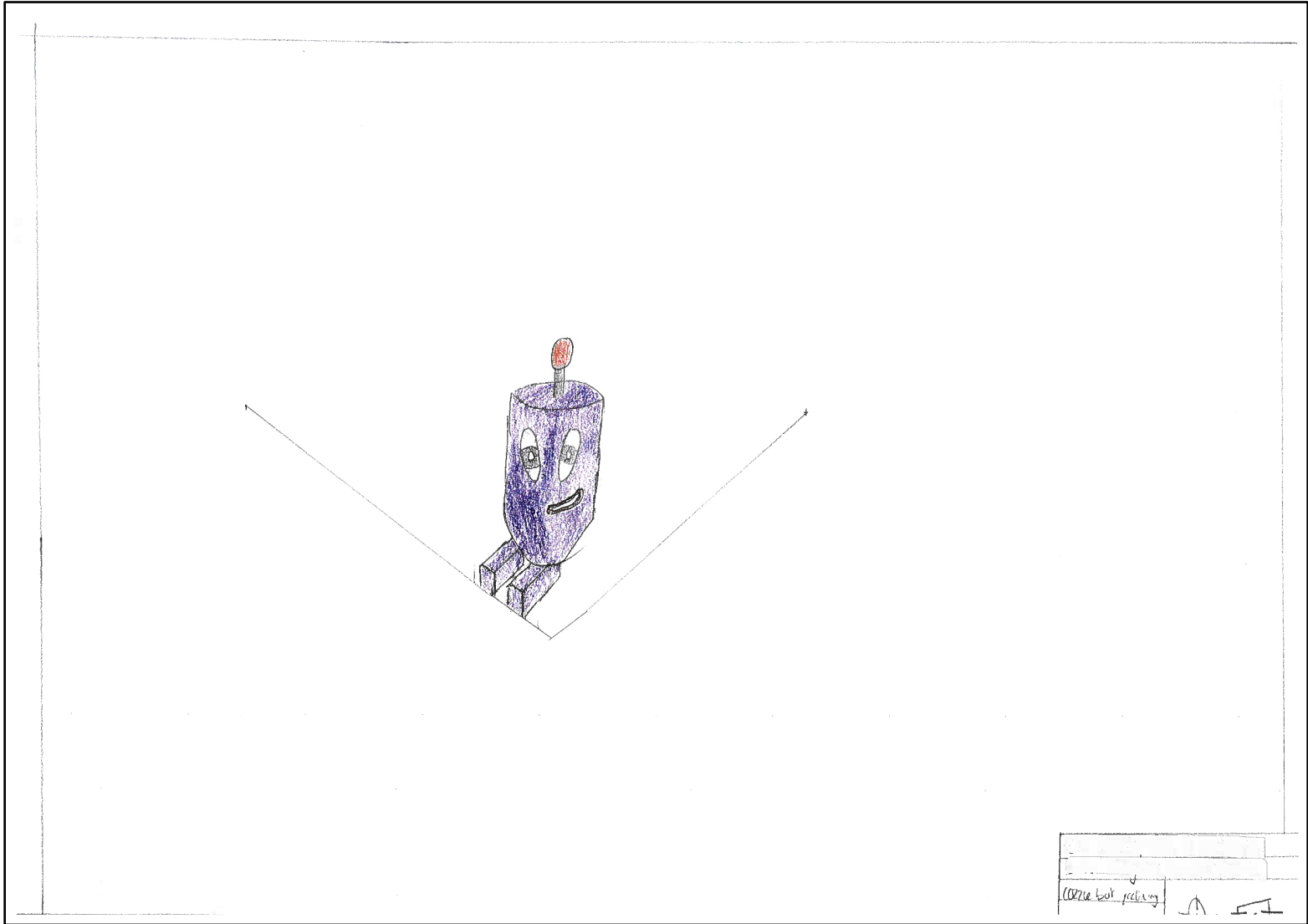


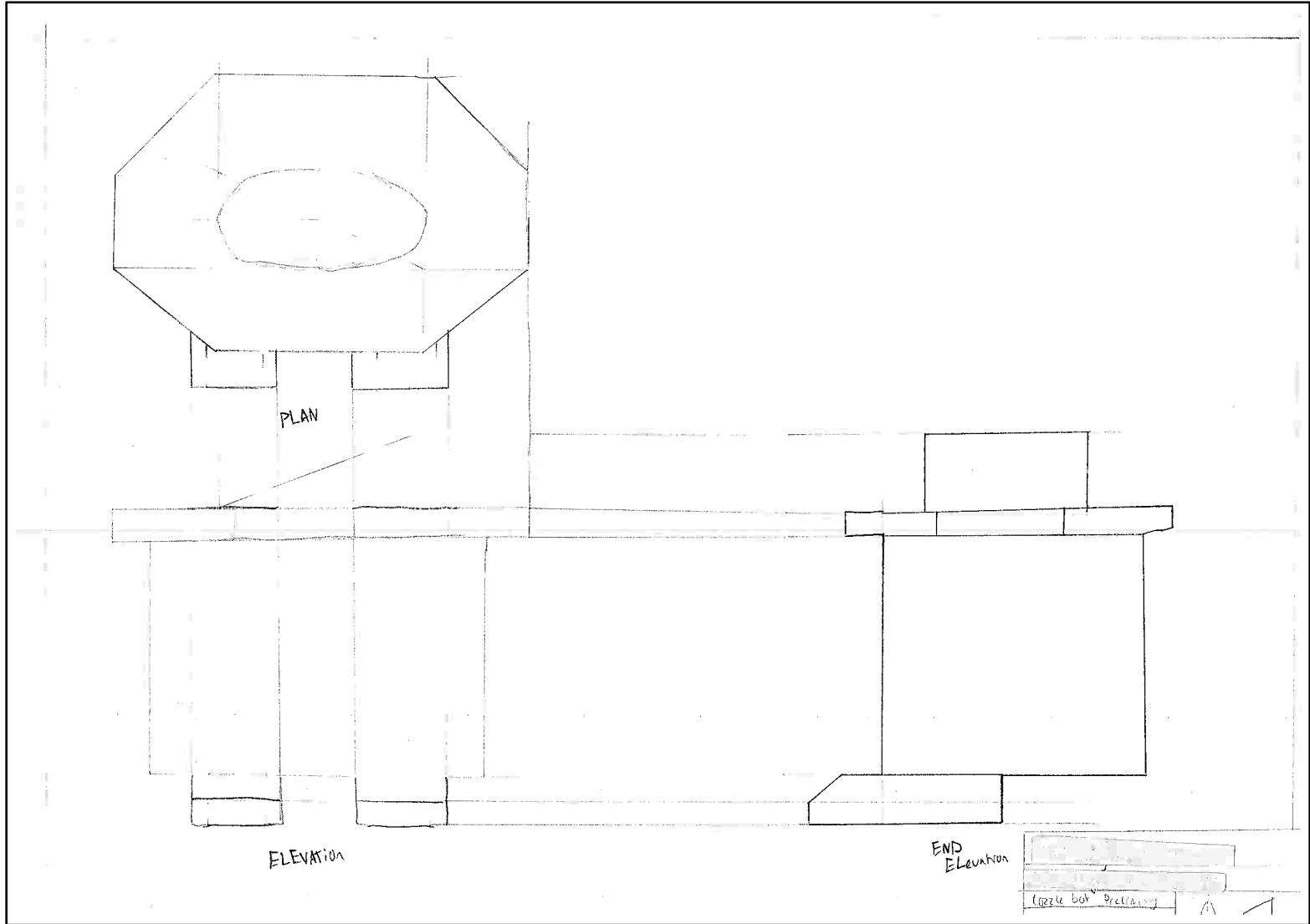
Value- has been used with the lighter areas  
As the lighter the area the more value it has making  
You focus on the main and key items of data.

Transparency- has been used with  
the use of a drop shadow on the small  
planets to make it more realistic and  
pleasing as you can have an idea  
where the sun is coming from

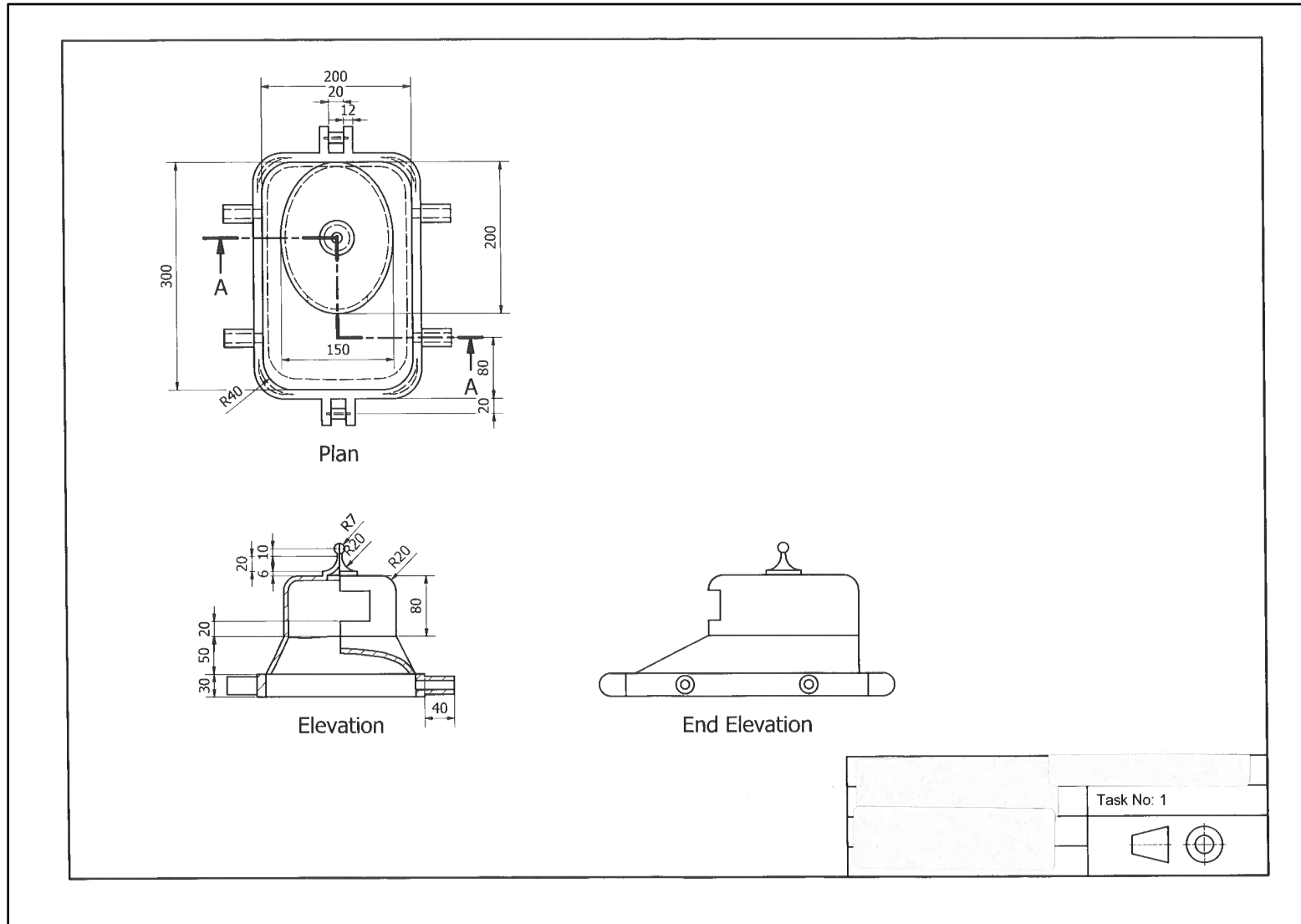


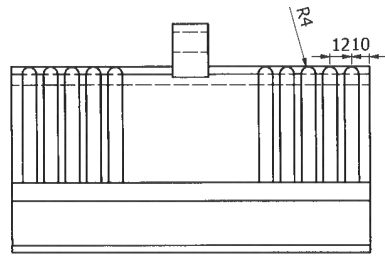




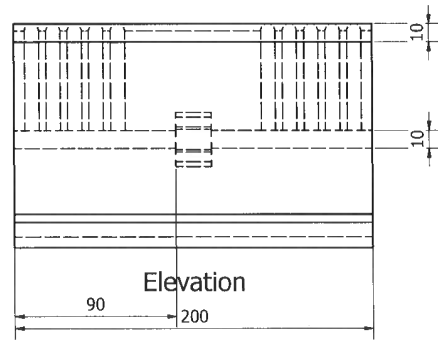


# Candidate 6 evidence

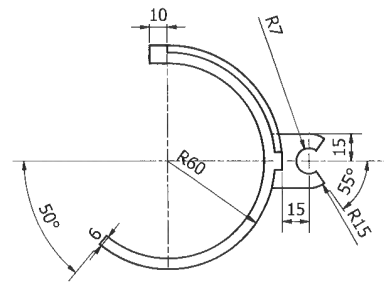




Plan

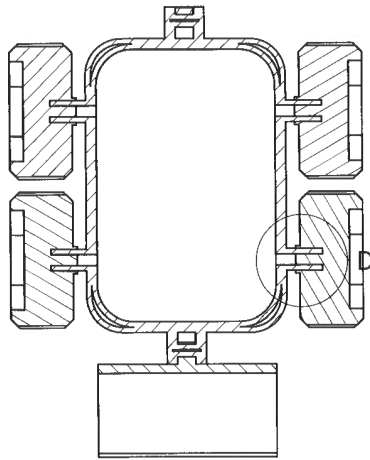


Elevation

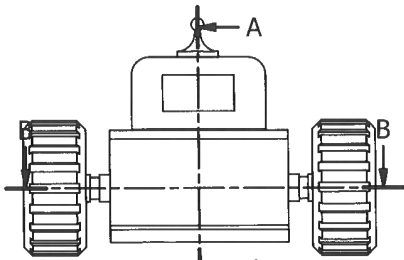


End Elevation

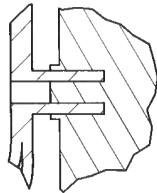
N		
D		Task No: 1



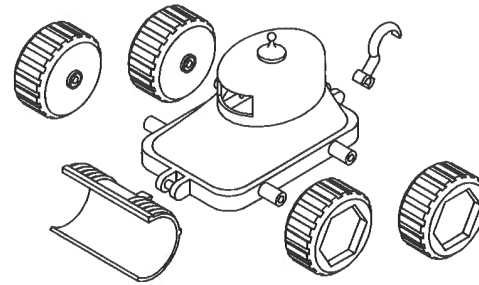
Section B-B



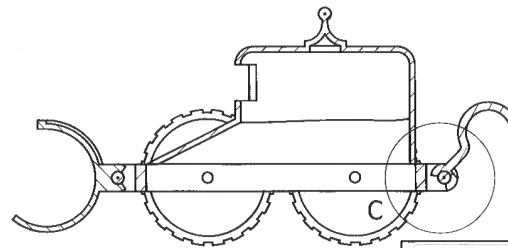
Elevation



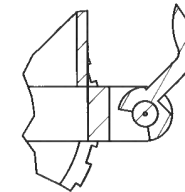
D (1:2)



Exploded Isometric

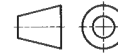


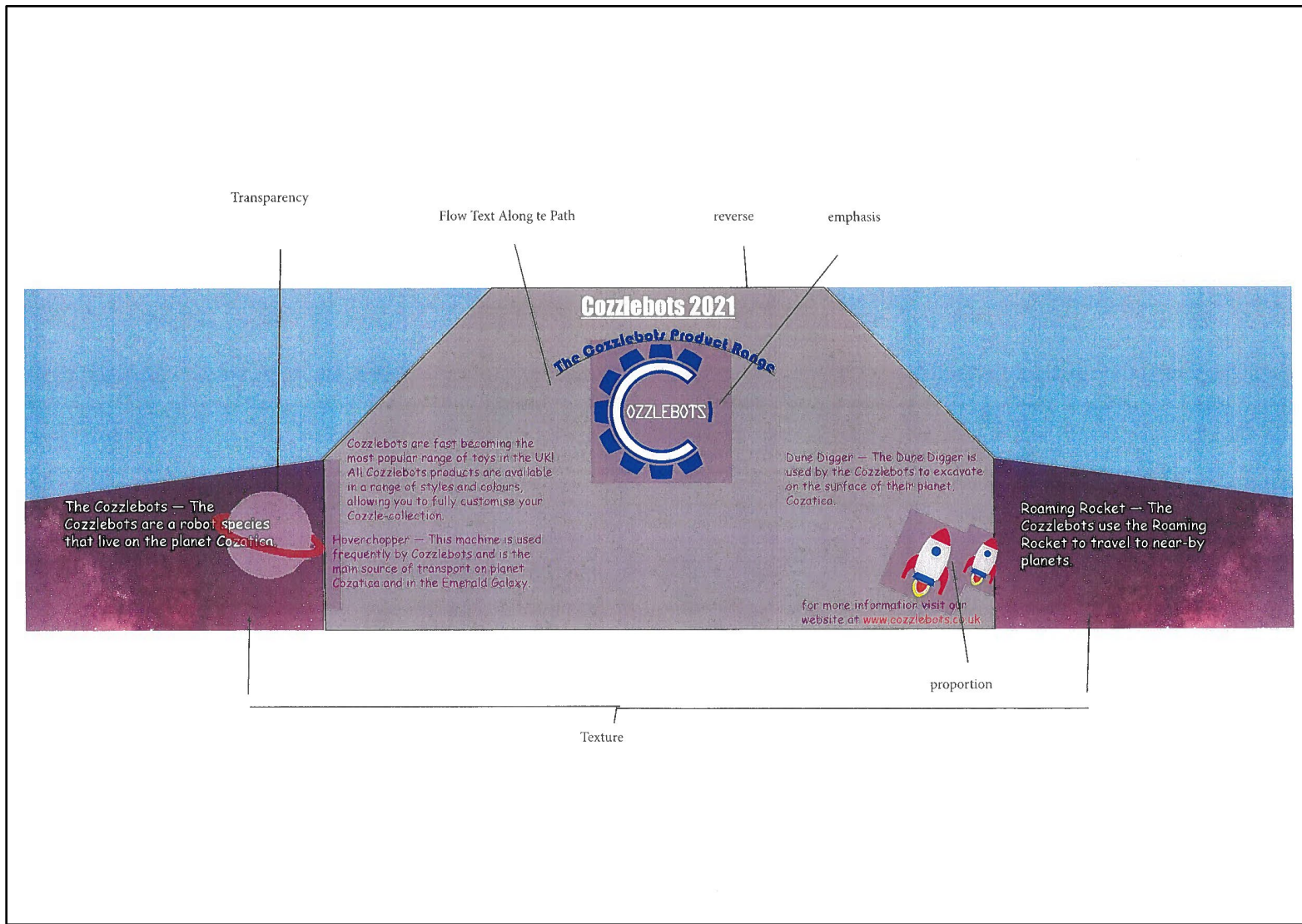
Section A-A



C (1:2)

Task No: 1





Transparency

Flow Text Along te Path

reverse

emphasis

## Cozzebots 2021

The Cozzebobot Product Range



The Cozzebots — The Cozzebots are a robot species that live on the planet Cozatica.

Cozzebots are fast becoming the most popular range of toys in the UK! All Cozzebots products are available in a range of styles and colours, allowing you to fully customise your Cozzebobot collection.

Hoverchopper — This machine is used frequently by Cozzebots and is the main source of transport on planet Cozatica and in the Emerald Galaxy.

Dune Digger — The Dune Digger is used by the Cozzebots to excavate on the surface of their planet, Cozatica.

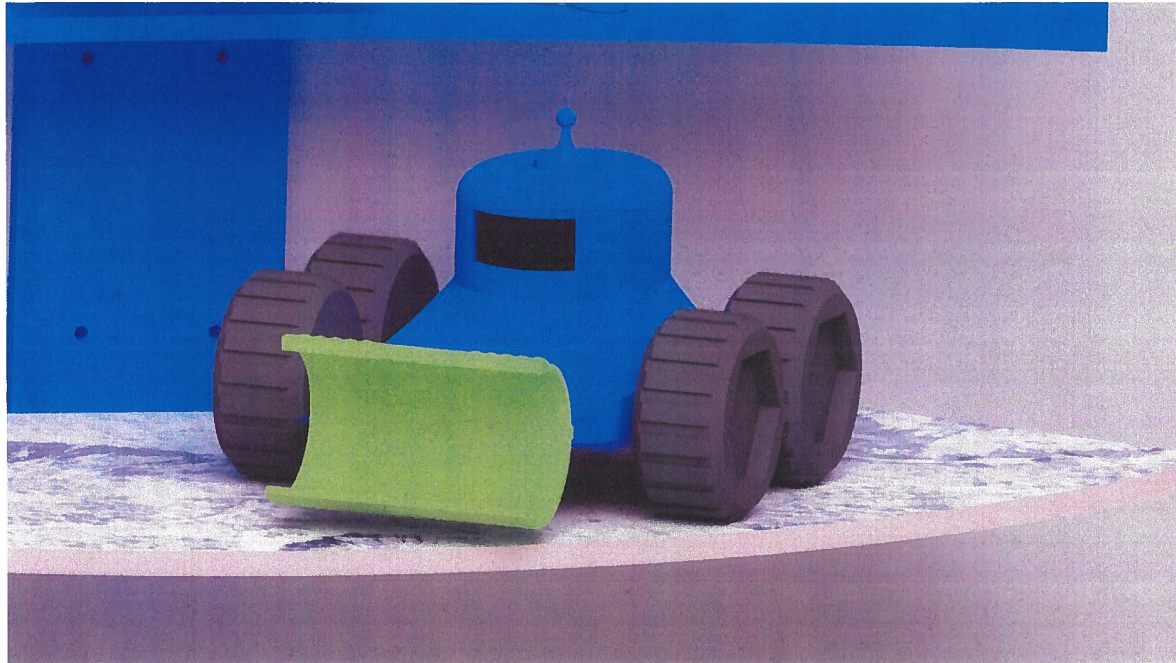


Roaming Rocket — The Cozzebots use the Roaming Rocket to travel to near-by planets.

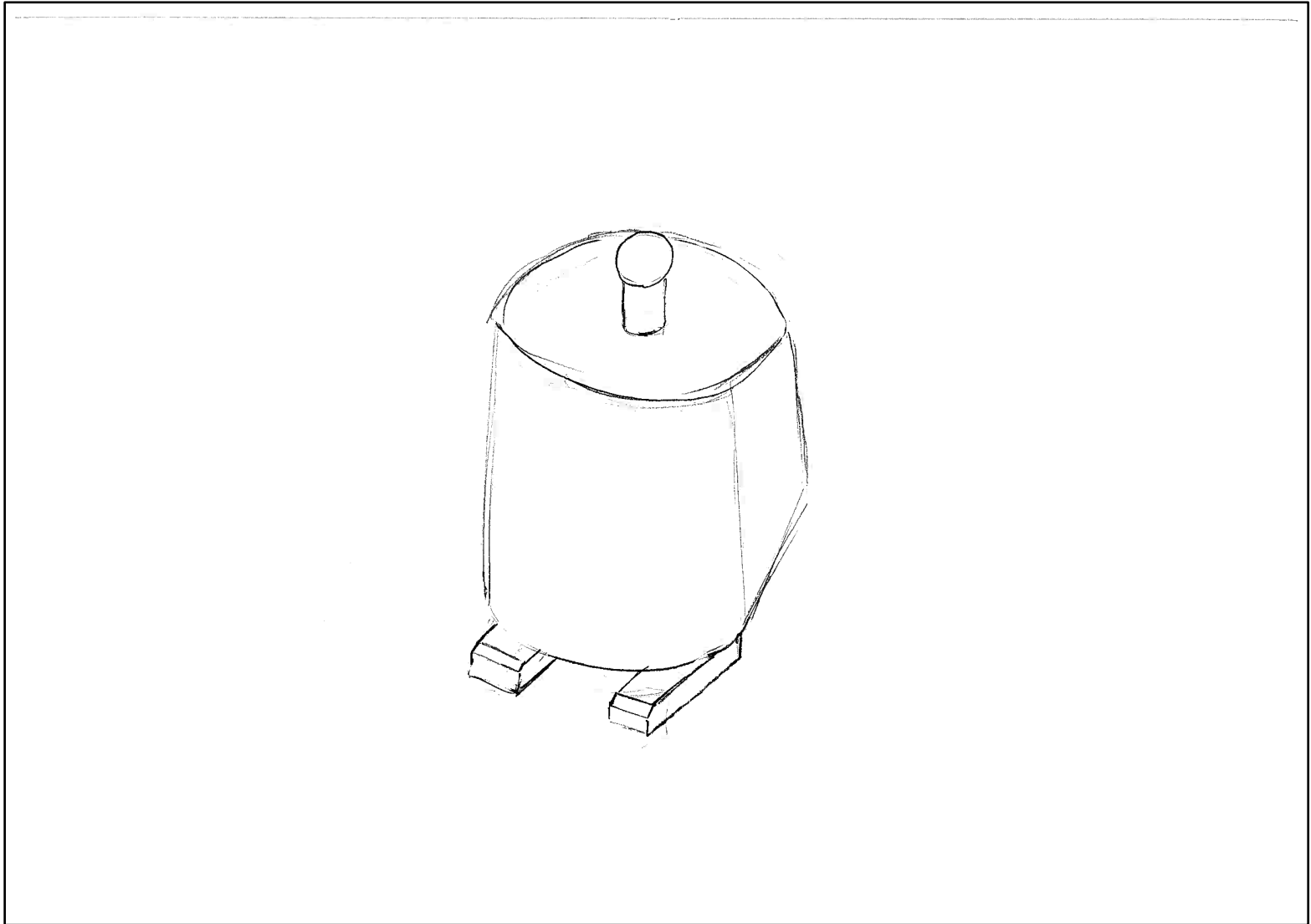
for more information visit our website at [www.cozzebots.co.uk](http://www.cozzebots.co.uk)

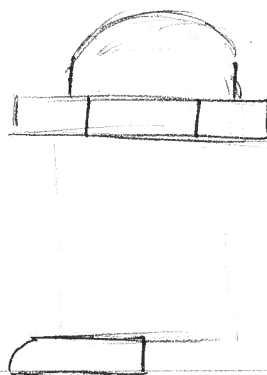
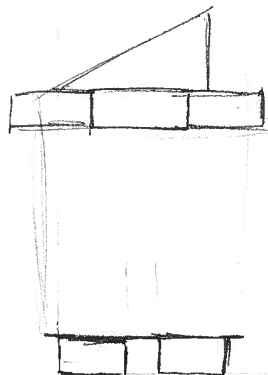
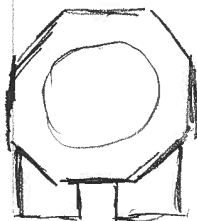
proportion

Texture

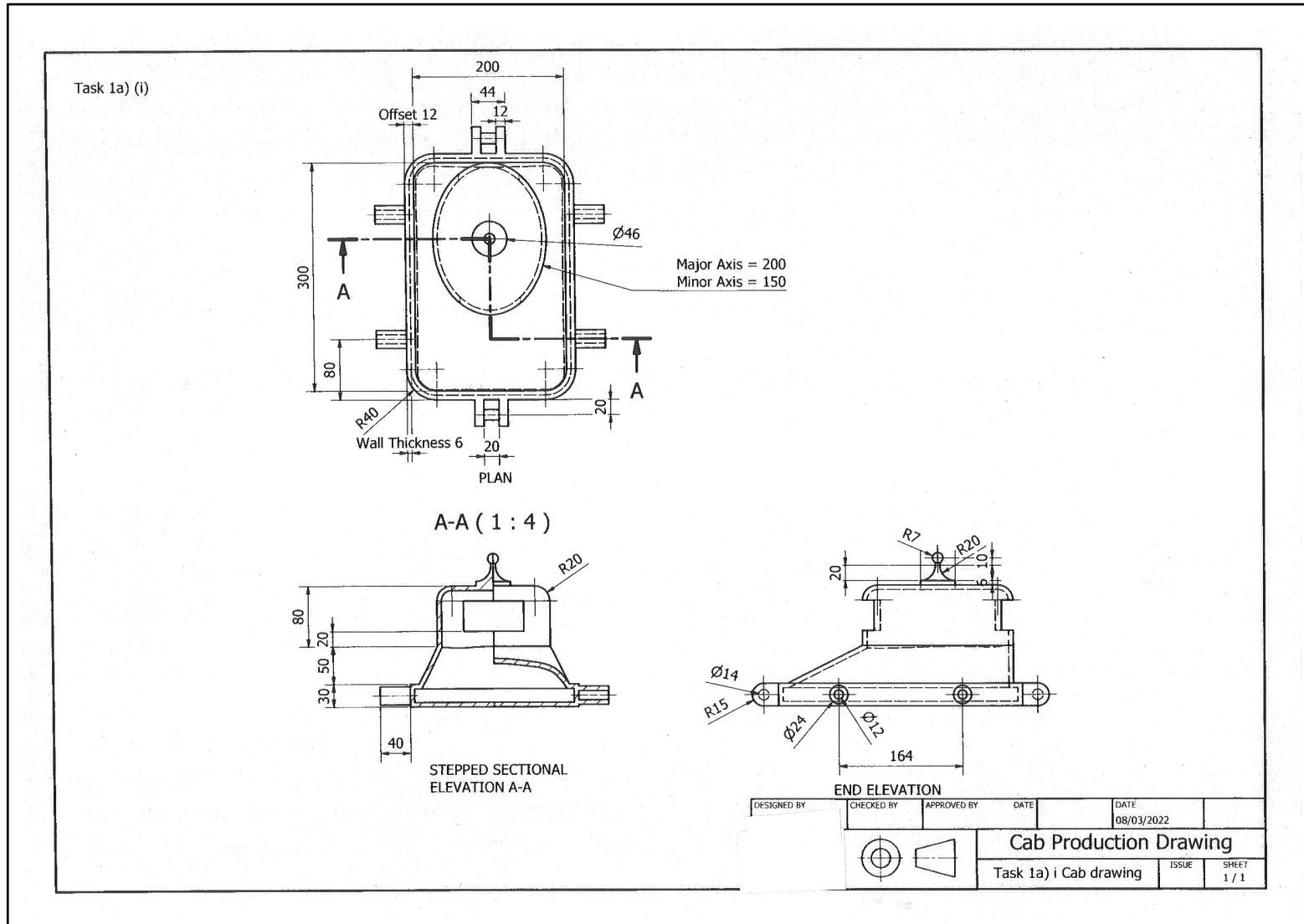




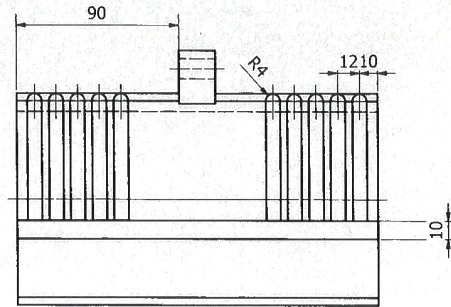




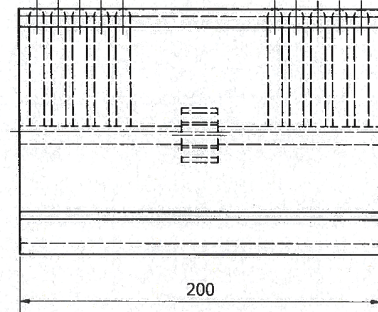
# Candidate 7 evidence



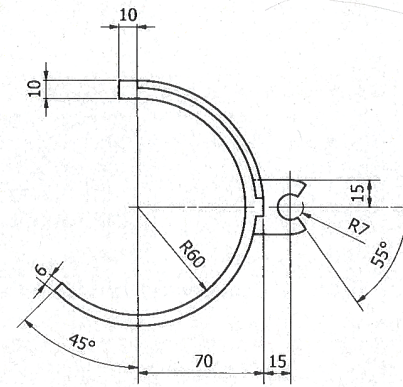
Task 1a) ii  
SCALE 1:2



PLAN



ELEVATION

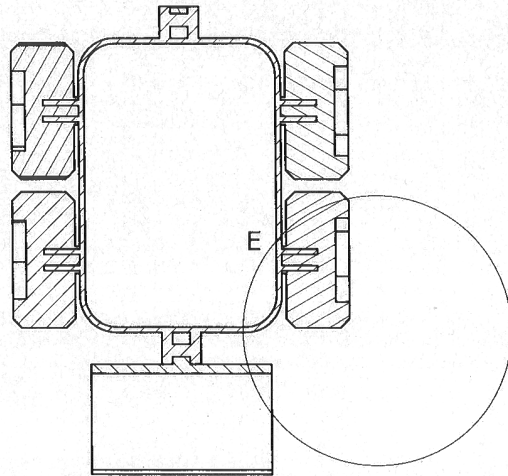


END ELEVATION

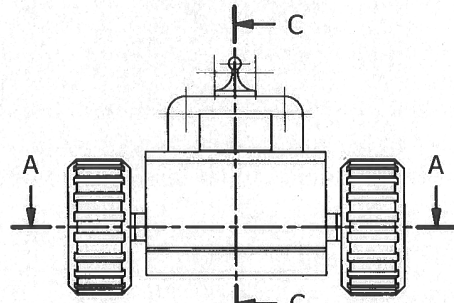
CHECKED BY	APPROVED BY	DATE	DATE
			08/03/2022
<b>Bucket Component Drawing</b>			
Task 1a) (ii) Bucket Drawing			SHEET
			1 / 1

Task 1b)

A-A (1 : 4)

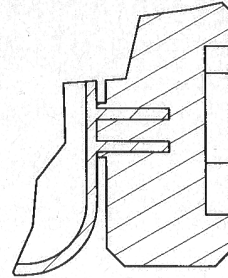


SECTIONAL PLAN A-A



ELEVATION

E (1 : 2)

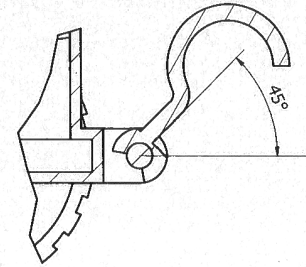


ENLARGEMENT VIEW E



This enlargement view has been added to show, with greater clarity, how the cab and wheel should fit together.

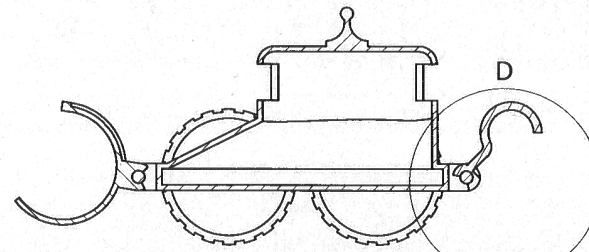
D (1 : 2)



ENLARGEMENT VIEW D

This enlargement view has been added to show, with greater clarity, how the cab and hook fit together and the 45 degree angle by which they have to be constrained by.

C-C (1 : 4)



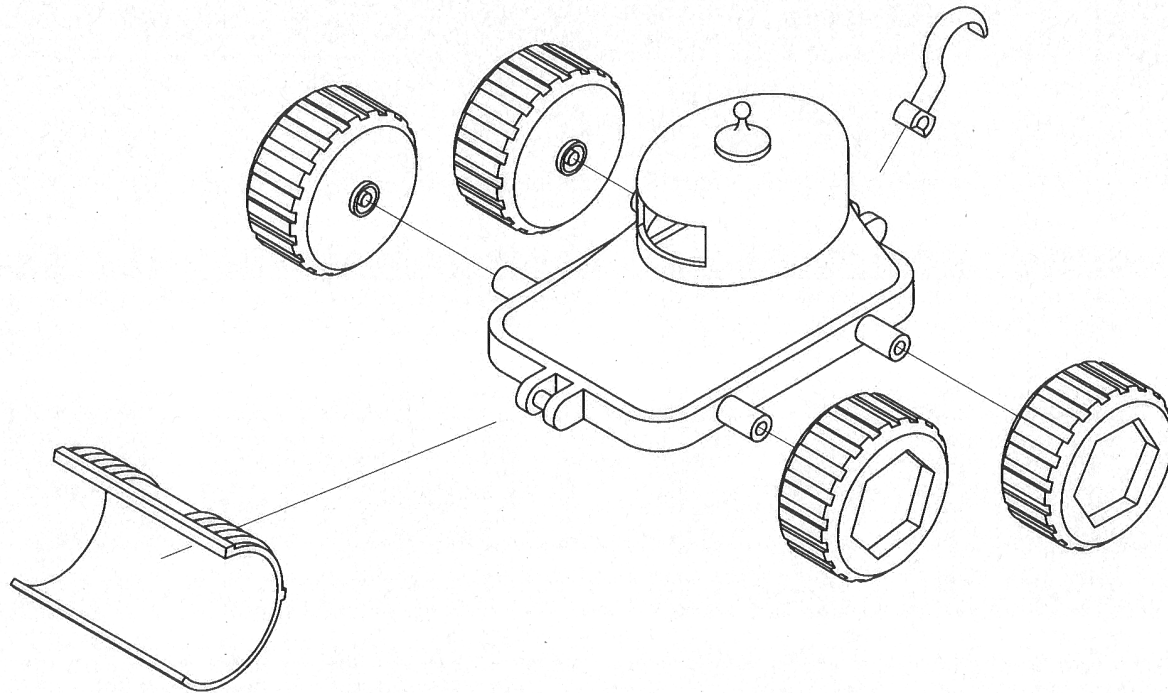
SECTIONAL END ELEVATION C-C

DATE	DATE	CHECKED BY	APPROVED BY	DATE	DATE
	08/03/2022				

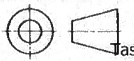
File/iProperties to modify this

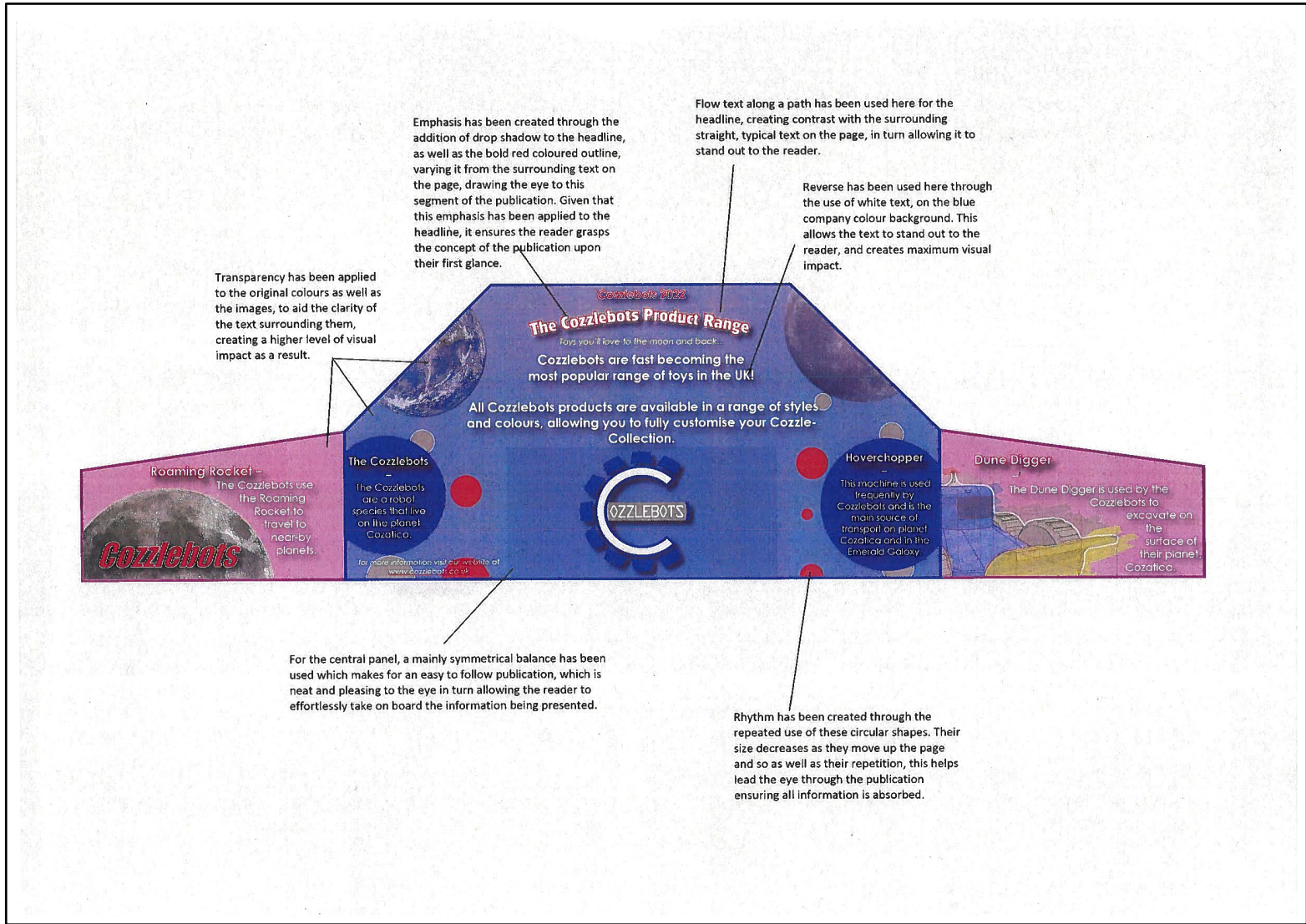
Task 1b) Assembly Drawing	ISSUE	SHEET
		1 / 1

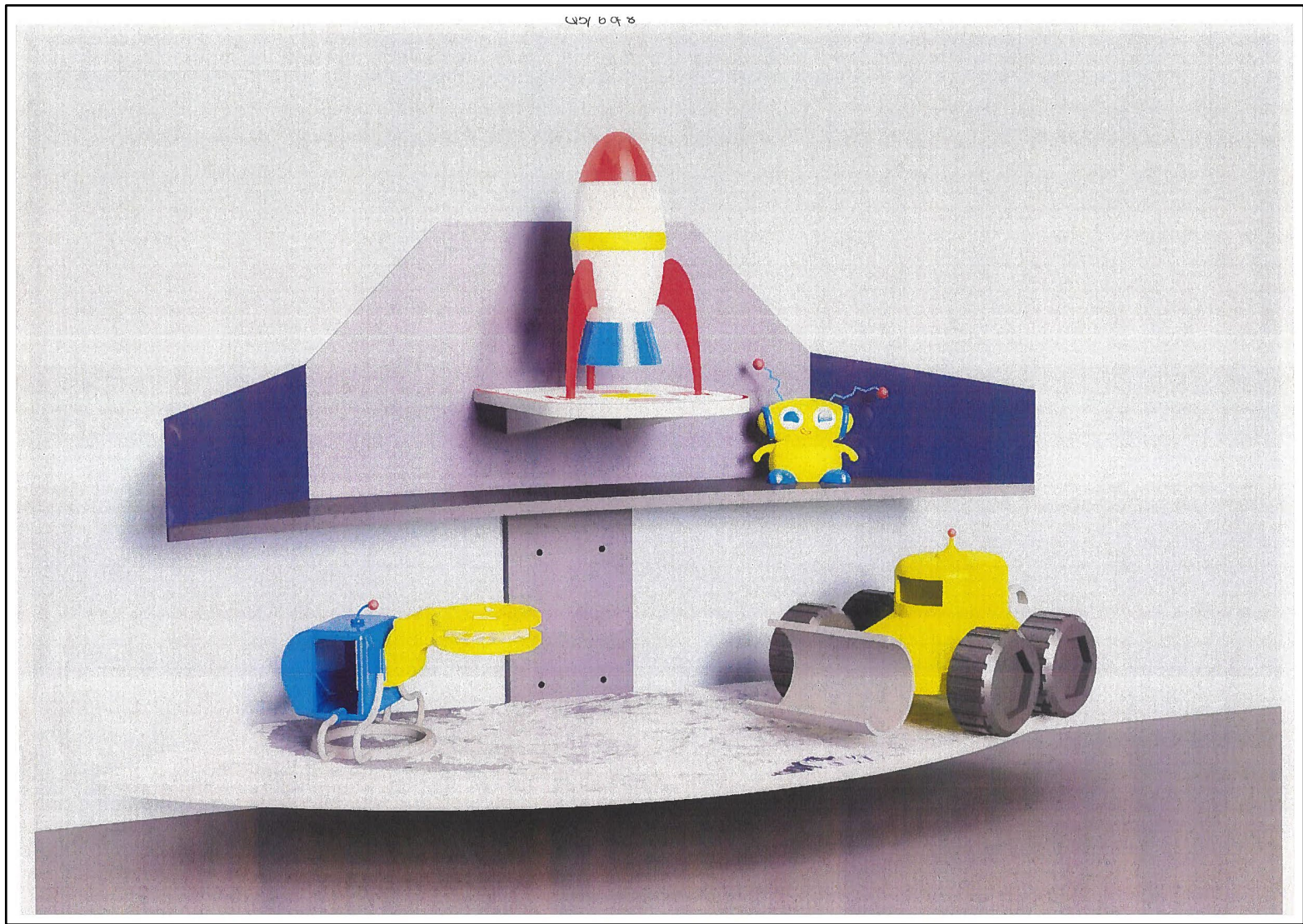
Task 1c)

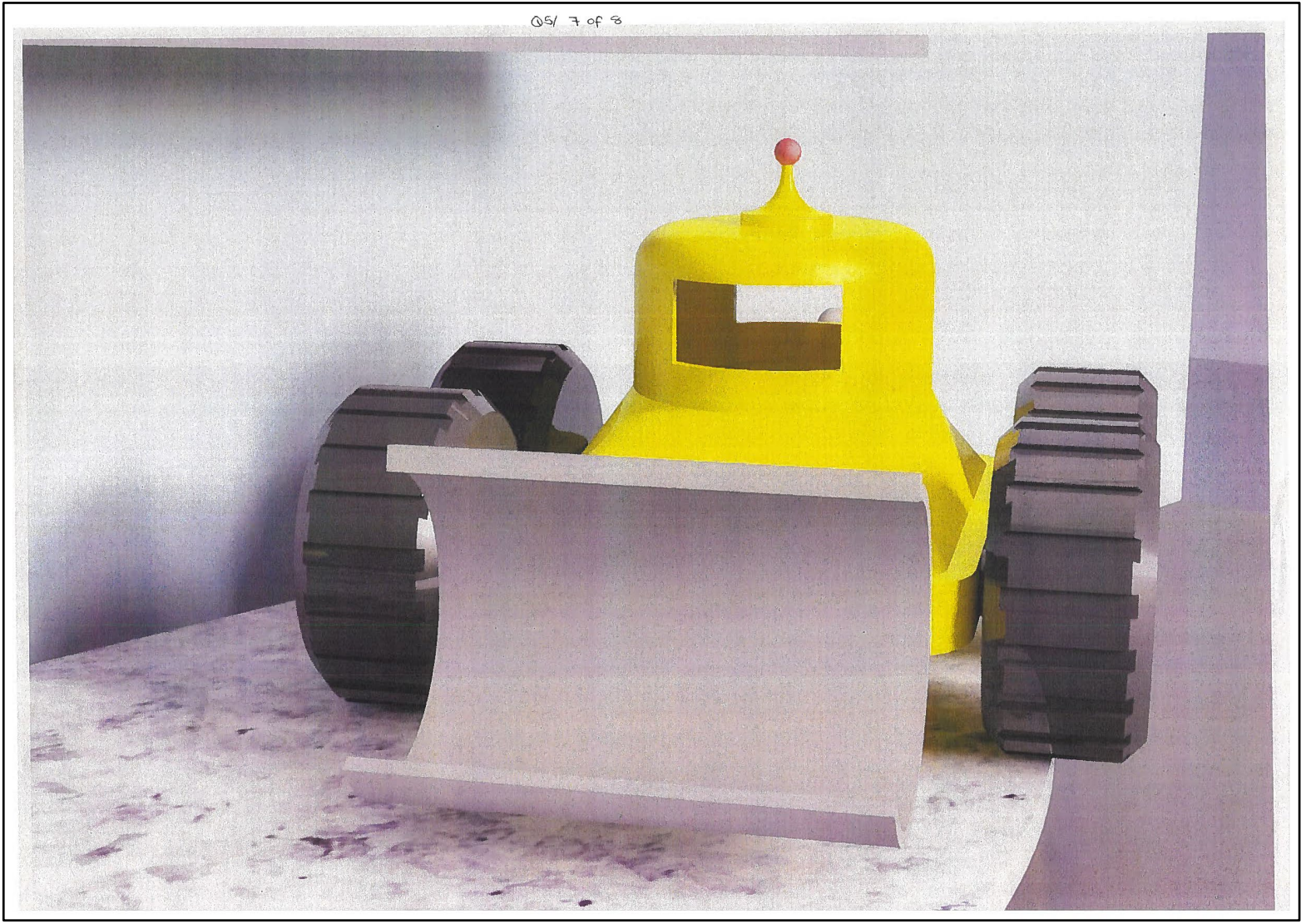


EXPLODED ISOMETRIC VIEW

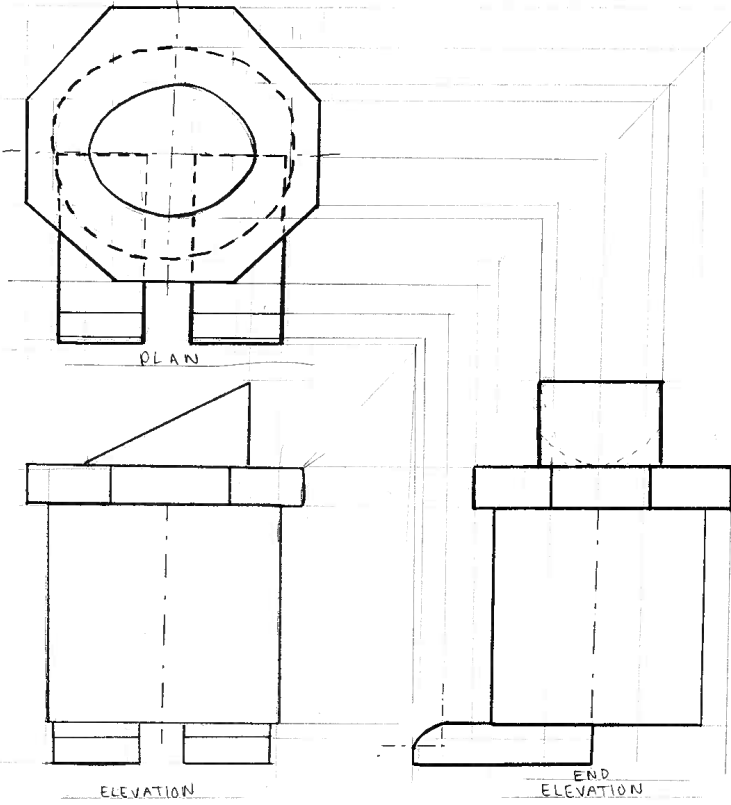
DESIGNED BY	CHECKED BY	APPROVED BY	DATE	DATE	
				08/03/2022	
				<b>Exploded Isometric View</b>	
				Task 1c) Exploded Isometric Drawing	SHEET 1 / 1

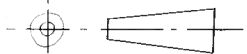




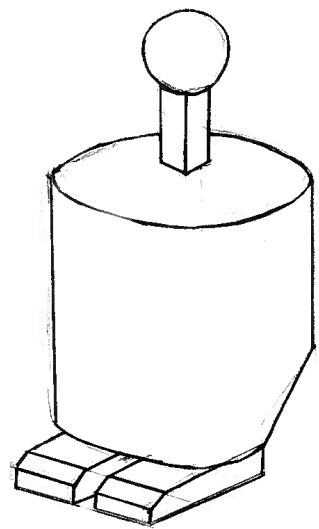


Task 3b



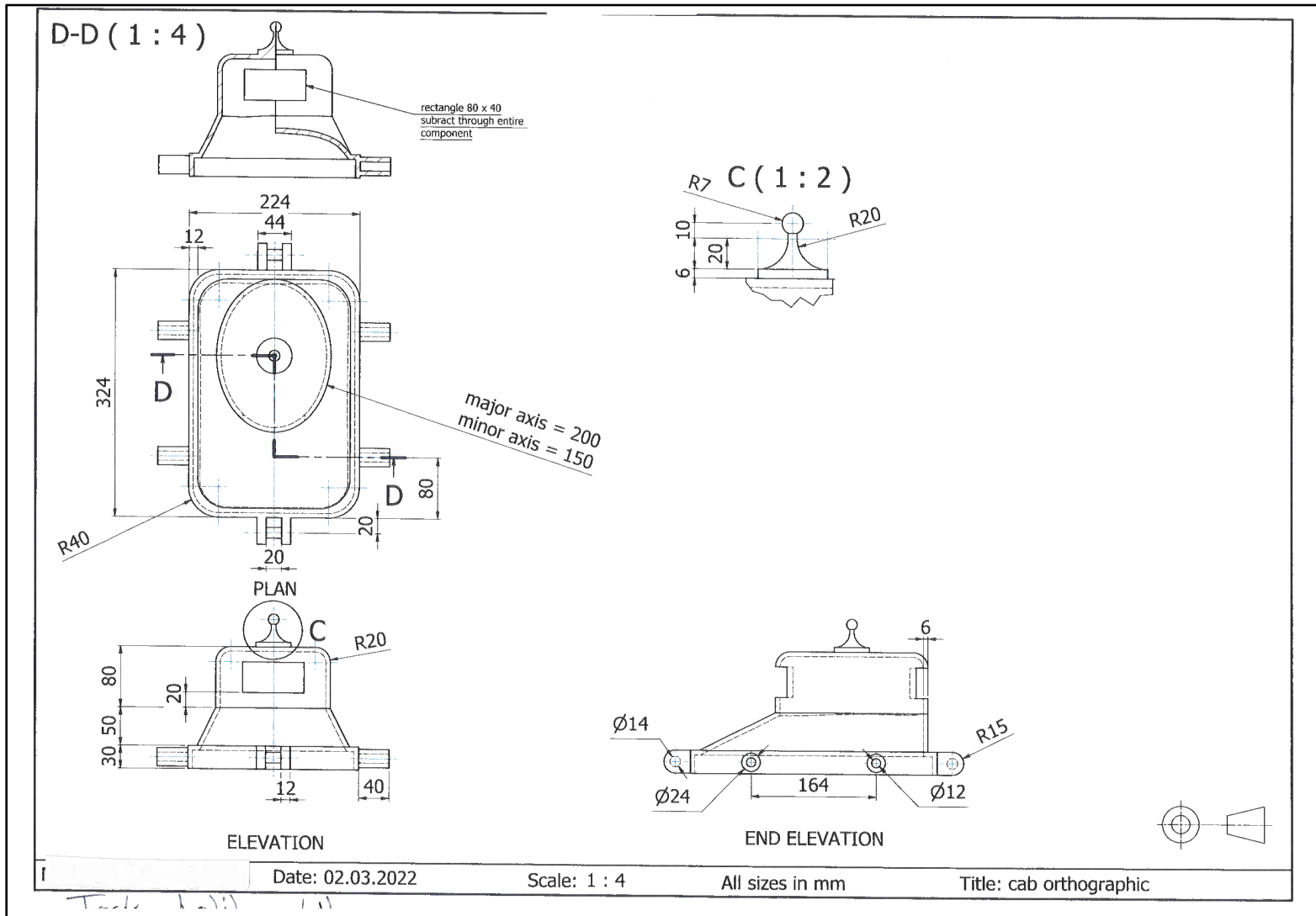
TASK 3b Orthographic Toy	
N	
DATE	10/3/22
SCALE	NOT TO SCALE
	

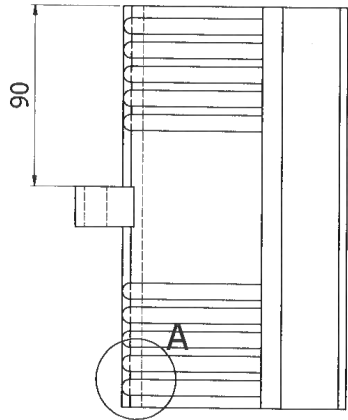
Task 3a)



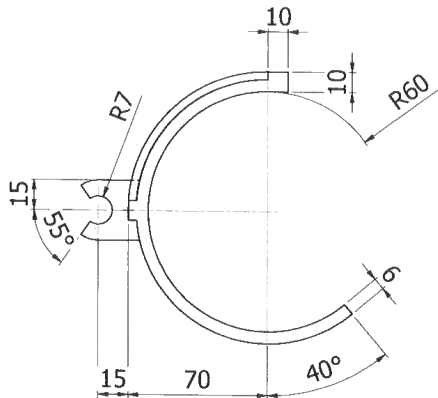
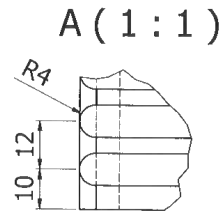
TASK 3A	
PICTORIAL COZZLEBOT SKETCH	
DATE	10/3/22
SCALE	NOT TO SCALE
SIZES IN	N/A

# Candidate 8 evidence

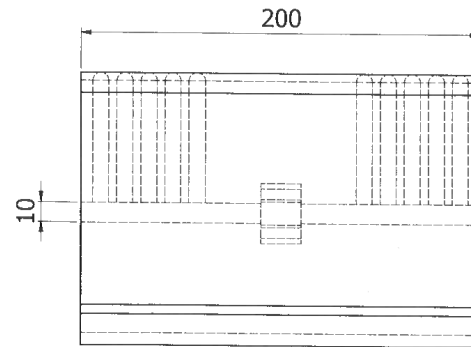




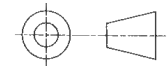
PLAN



ELEVATION



END ELEVATION



N

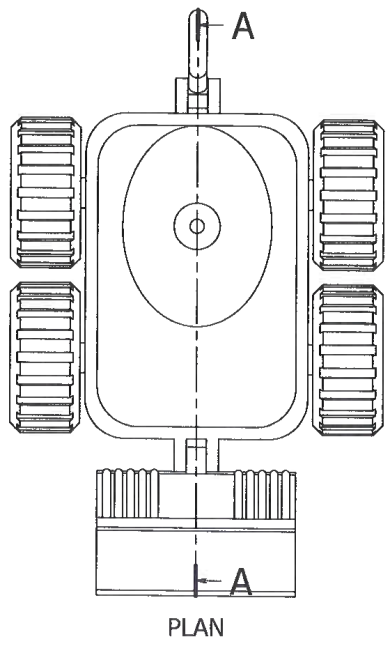
Date: 02/03/2022

Scale: 1 : 2

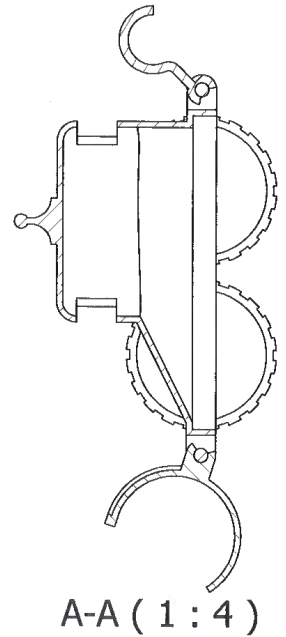
All sizes in mm

Title: bucket orthographic

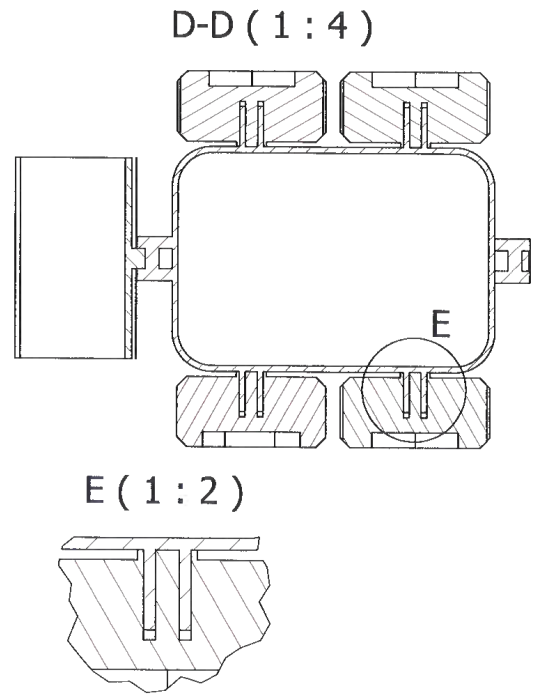
Tech: (a) (1)



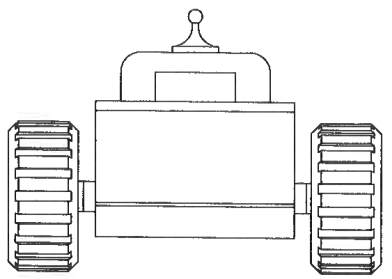
PLAN



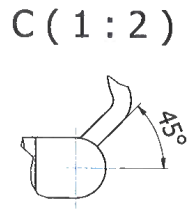
A-A (1 : 4)



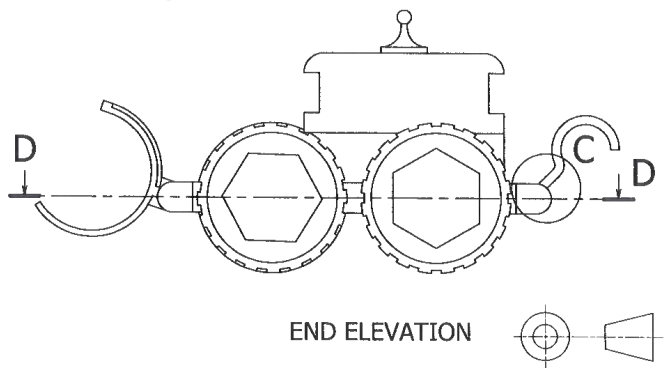
D-D (1 : 4)



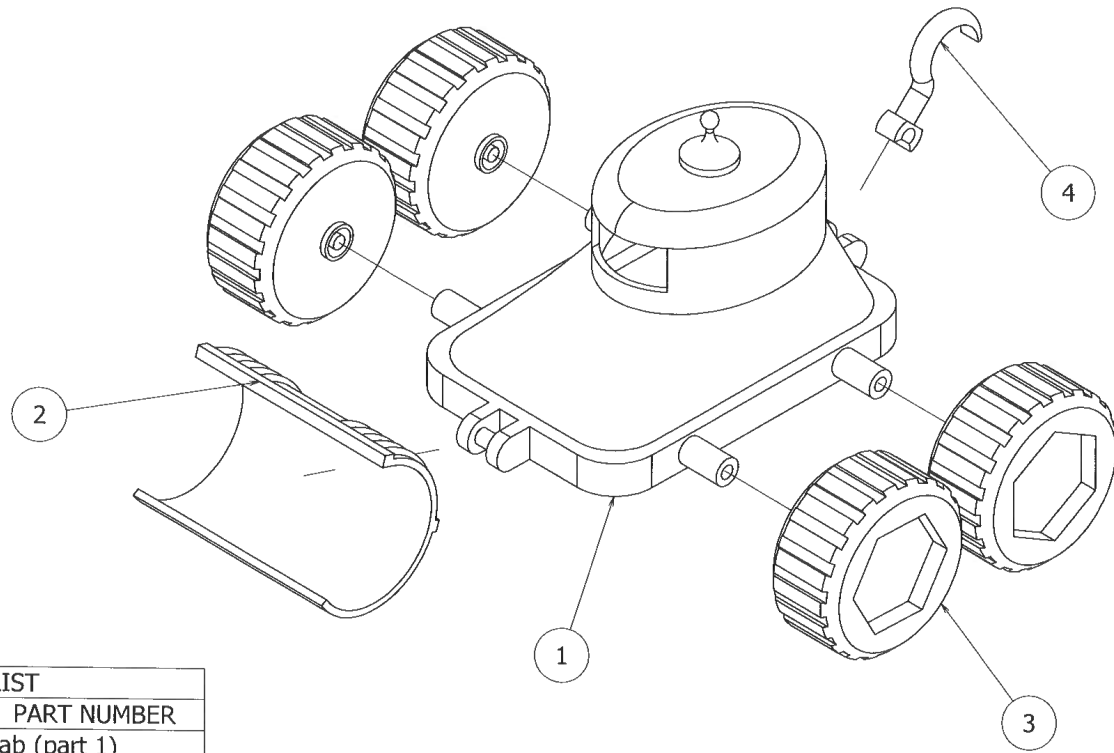
ELEVATION



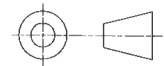
C (1 : 2)



END ELEVATION



PARTS LIST		
ITEM	QTY	PART NUMBER
1	1	cab (part 1)
2	1	bucket (part 2)
3	4	wheel (part 3)
4	1	hook (part 4)



Date: 07/03/2022

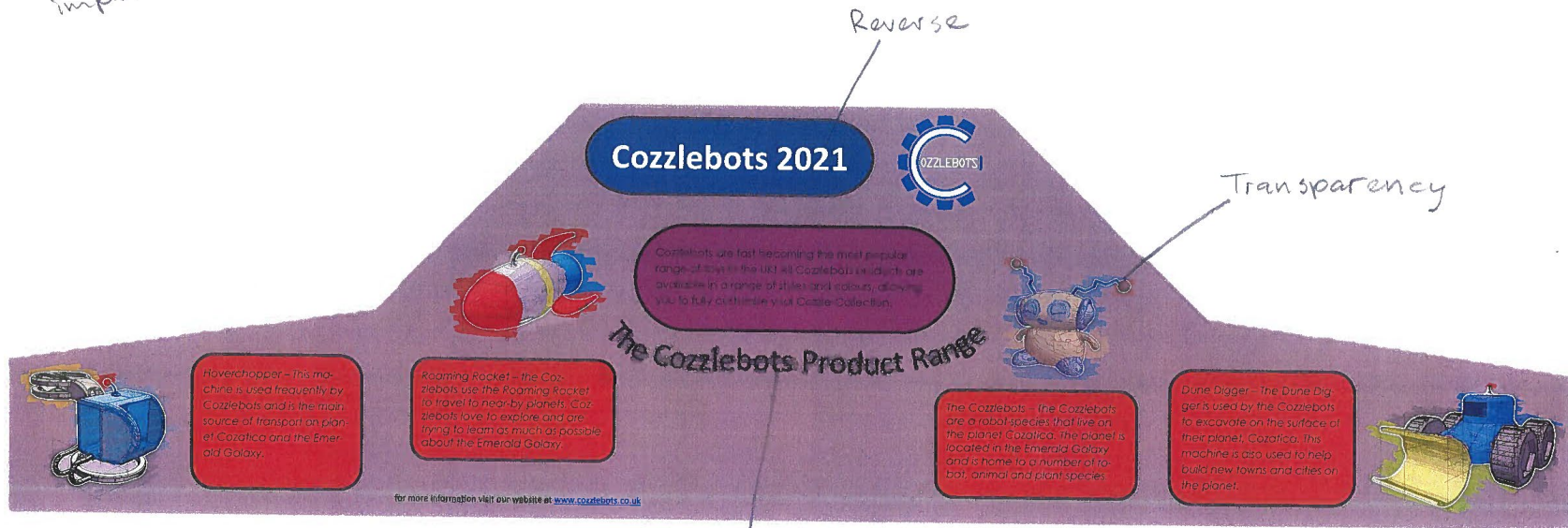
Scale: 1 : 3

All sizes in mm

Title: exploded dune digger toy

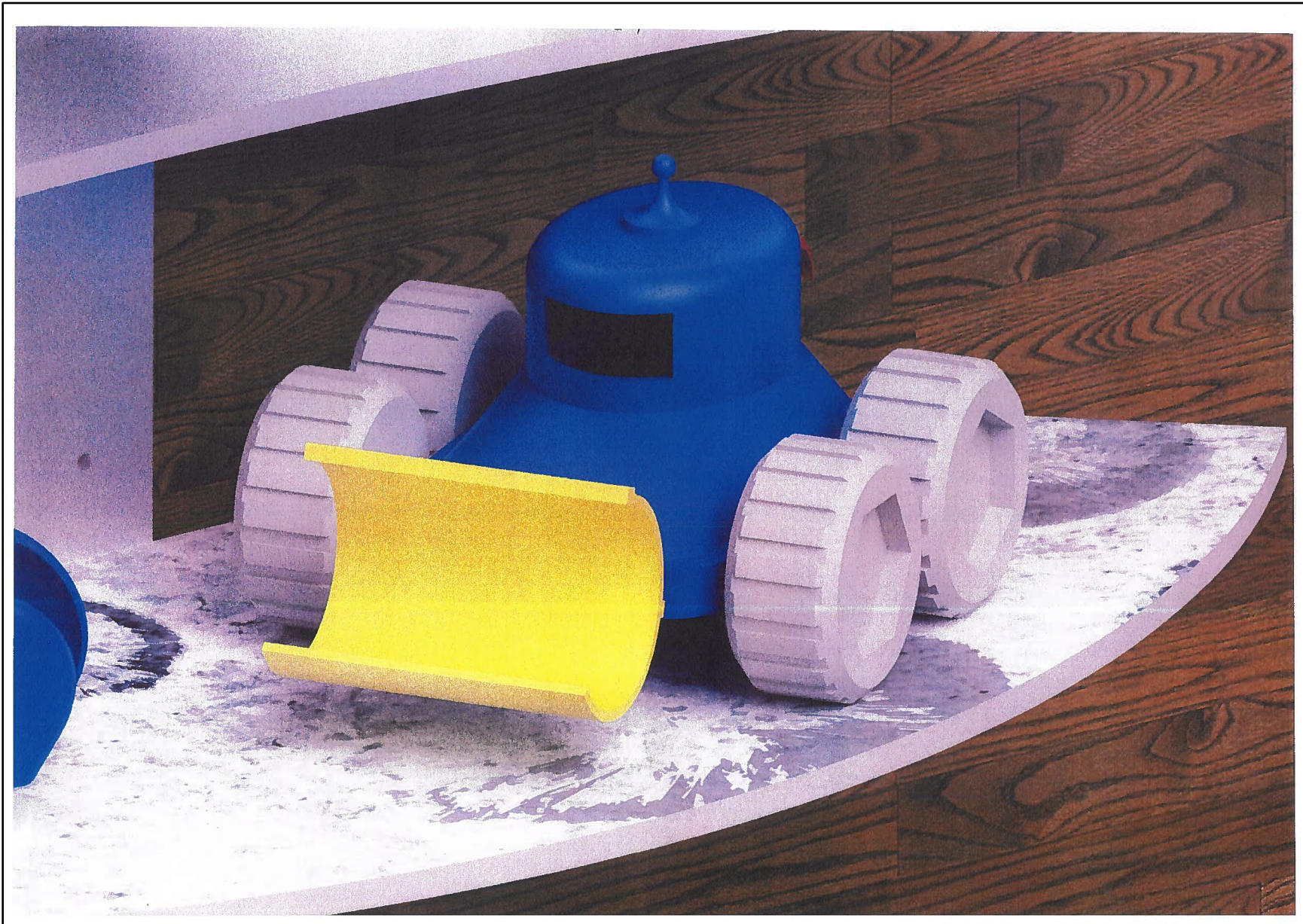
Task 1.1 1.1

Emphasis - Title "Cozzlebots 2021" ~~is~~ is emphasised by the fact that it is the largest element and its at the top of the promotional graphic. It is also ~~has~~ in white text contrasting from other text which further emphasises the importance of the title.

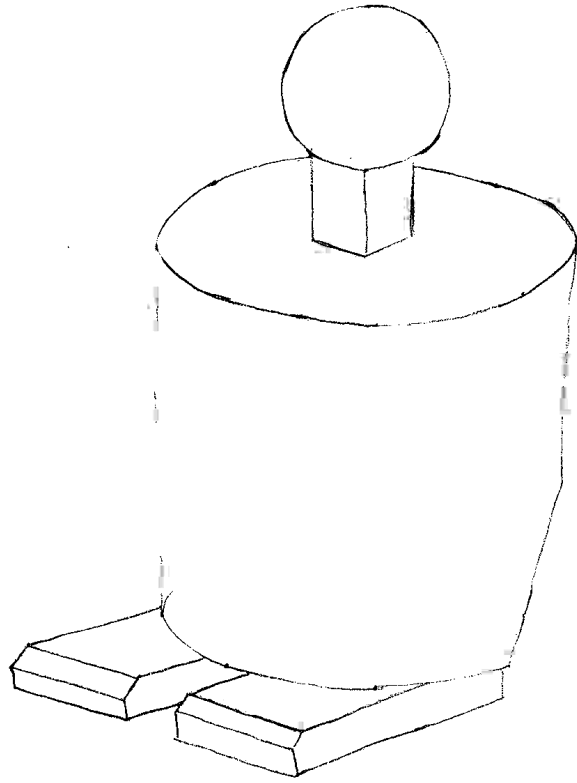


Balance - The three panel information graphic has symmetrical balance because text boxes with text are spread out in the graphic, having 2 on both sides and 1 large ~~text box~~ <sup>text box</sup> in the center.

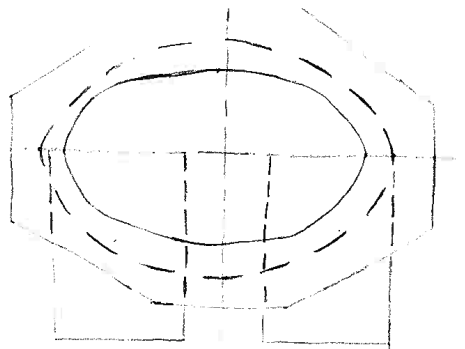




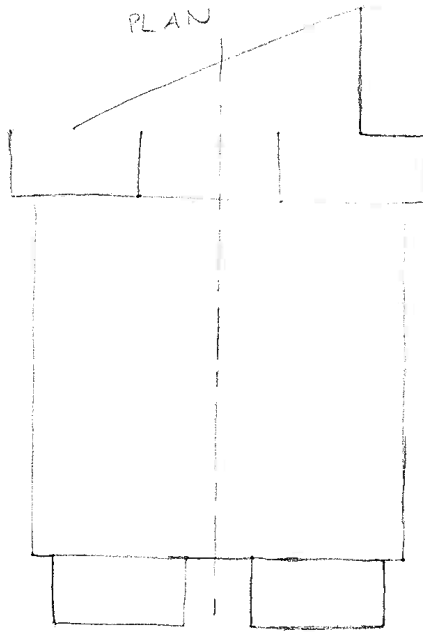
3a)



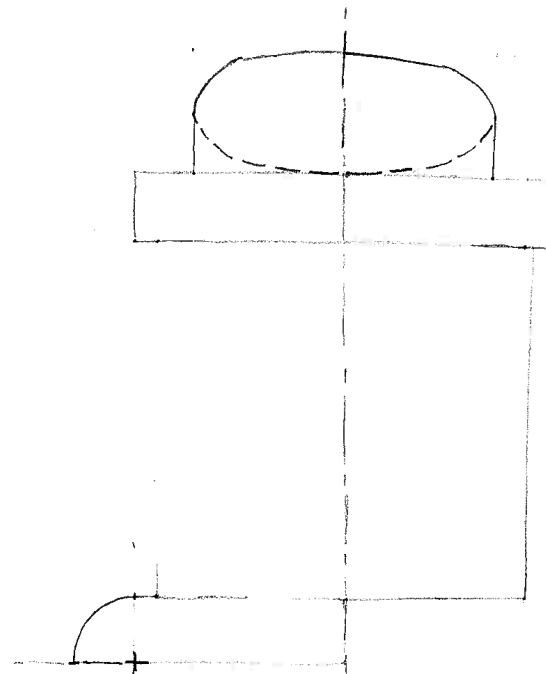
3a) 2.1



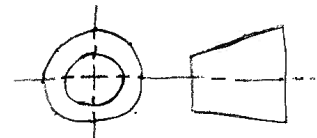
PLAN



ELEVATION



END ELEVATION



Prob. 7.1.1