

**TOTAL MARKS — 40**  
**Attempt ALL questions**

**Question 1**

This question features vocal music in different styles.

- (a) Listen to this excerpt and identify four concepts in the music from those listed below.

You now have 15 seconds to read through the list of features.

<del>Morcent</del> - 3	Renaissance
Madrigal - Eng - Lute	Chorale -
Melismatic	Ayre/Air - voice + lute
Syllabic - word setting	Tierce de Picardie
Time changes	Lied

Insert your four answers on the lines below

Madrigal.

---

Renaissance

---

Syllabic

---

Melismatic

---

The music will be played twice with a pause of 10 seconds between playings and a pause of 40 seconds before part (b).

Here is the music for the first time.

Here is the music for the second time.

- (b) Listen to a different excerpt and identify the type of voice.

~~Mezzo~~ counter tenor

---

Alto.

## Question 2

This question features music for instruments and music for voices.

- (a) Listen to this excerpt and identify four concepts in the music from those listed below.

You now have 15 seconds to read through the list of features.

Tremolando - bee's	Note row
Chamber music - small group	Ground bass -
Chromatic scale - 12.	Diminished 7 <sup>th</sup> - Horrible
Serial -	Sonata - piano + inst
Stretto - fugue - fast entries	Acciaccatura - grace note

Insert your four answers on the lines below.

tremolando.

Acciaccatura

Diminished 7<sup>th</sup>

note row

The music will be played twice with a pause of 10 seconds between playings and a pause of 40 seconds before part (b).

Here is the music for the first time.

Here is the music for the second time.

- (b) Listen to a different excerpt and identify the style of the music.

planchant

- (c) Listen to that excerpt again and identify the tonality.

modal

## Question 2 (continued)

- (d) Listen to this excerpt. Identify the rhythmic concept that describes how the theme is developed.

The music will be played twice.

Here is the music for the first time.  
Here is the music for the second time.

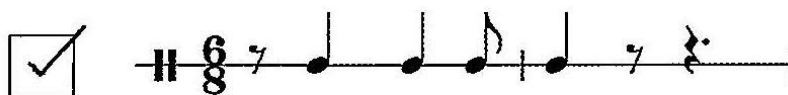
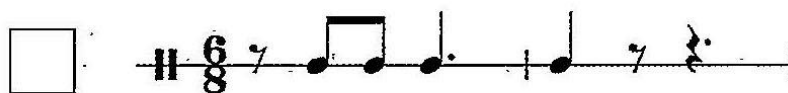
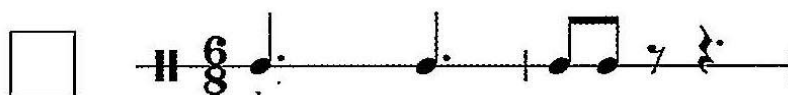
Diminution

- (e) Listen to a further excerpt. Brass chords are heard between each repetition of the theme.

Tick **one** box to identify the correct version of the rhythm played by the brass instruments.

You now have 20 seconds to read through the possible answers.

Here is the music for the first time.  
Here is the music for the second time.



### Question 3

This question features music in different styles.

- (a) In the next excerpt you are required to complete the guide below by inserting appropriate music concepts.

There will now be a pause of 30 seconds to allow you to read through the question.

The music will be played three times with a pause of 20 seconds between playings and a pause of 30 seconds before part (b).

In the first two playings a voice will help guide you through the music. There is no voice in the third playing.

Here is the music for the first time.  
Here is the music for the second time.  
Here is the music for the third time.

1. The harmonic feature in the bass is a/an

pedal

2. The melody is played by a/an

francophone / french horn ~~supranatural / french horn~~

3. The repeated ornament played by the flute is a/an

Mordent

4. This section finishes on a/an

trouée de picarde  
perfect cadence in a major key.

**Question 3 (continued)**

(b) Listen to this excerpt and identify what you hear.

Musique concrète - ~~no~~

Soul music - *gospel*

Electronic dance music

Contemporary jazz

(c) Listen to a different excerpt and write the time signature in the space below.

5/4

### Question 4

This question is based on music for solo piano.

You now have 20 seconds to read through part (a).

- (a) The rhythm of the melody is shown below.

Complete the rhythm in bars 3–5.

Listen to the excerpt which will be played twice.

There will be a pause of 30 seconds before part (b).

Here is the music for the first time.

Here is the music for the second time.

- (b) Listen to the opening of the previous excerpt and complete the sentence below. The excerpt will be played twice.

The major triad heard twice at the opening of the excerpt is followed immediately by a repeated augmented triad.

Here is the music for the first time.

Here is the music for the second time.

**Question 4 (continued)**

- (c) Listen to a further excerpt and insert the missing notes in the box on the bass staff.

You will hear the excerpt **twice**, with a pause of 40 seconds before part (d).

Here is the excerpt for the first time.  
Here is the excerpt for the second time.

Musical notation for question (c) showing a piano excerpt with 7 bars. A box labeled "Notes" is placed over the bass staff in bar 6.

- (d) In this final excerpt from the same piece you are asked to:

- (i) identify the type of scale used;
- (ii) give the enharmonic equivalent of the boxed note in bar 3.  
Re-write this note at the same pitch on the staff below.

You now have 20 seconds to look at the music below.

Musical notation for question (d) showing a scale excerpt with a handwritten answer box for (i) and a staff for (ii).

(i) Type of scale: whole tone scale

(ii) Enharmonic

You will hear the excerpt **twice**, with a pause of 40 seconds before part (e).

Here is the excerpt for the first time.  
Here is the excerpt for the second time.

a	I	ii	IV	V	VI
b	F	G	B	C	D
c	A	B <sup>b</sup>	D	E	F
	C	D	F	G	A

Question 4 (continued)

- (e) Listen to a new excerpt and follow the guide to the music below.  
Here is the music.

*f* major

F/I	F/Ia	G <sup>m</sup> /Ib	Gm/Ic
Root	1st inv	1st inv	2 <sup>nd</sup> Inv.
	Chords	chords	Bass note

You now have 1 minute to read through both parts of the question.

The key is F major.

- ✓ (i) Identify the boxed chords used in bars 7 and 8. You should indicate the chord name or number and, where appropriate, 1<sup>st</sup> or 2<sup>nd</sup> inversion.
- ✓ (ii) The chord used in bar 9 is Gm 2<sup>nd</sup> inversion/Chord IIc.  
Using the rhythm provided write the appropriate bass note to make the chord a 2<sup>nd</sup> inversion.

You will hear the music again, followed by a pause of 2 minutes before the next question starts.

Here is the music.



**Question 5**

This question is based on an excerpt from a song.

Listen and follow the guide to the music on the next page.

Here is the music.

You now have 1 minute to read through the questions below.

- |  |   |
|--|---|
| (a) Write the name of the key in the box above bar 1.                                      | 1 |
| (b) Insert the missing rest(s) on the stave in bar 4.                                      | 1 |
| (c) Insert one tie in the boxed area (bars 1 and 2) to make the music match what you hear. | 1 |
| (d) Insert the missing notes on the stave in bars 14 and 15 using the rhythm provided.     | 1 |

During the next two playings complete your answers, (a) to (d).

The music will be played two more times with a pause of 20 seconds between playings.

You should write all your answers on the guide to the music on the next page.

Here is the music for the second time.

Here is the music for the third time.

You now have 2 minutes to complete your answer. A warning tone will sound 30 seconds before the start of Question 6.

Question 5 (continued)

(a) Key:  
E♭ major

(c) Tie

Musical notation for question (c) showing a tie between measures 1 and 2. The notation is in treble clef, 4/4 time, and E♭ major. Measure 1 contains a dotted quarter note G4 and a half note A4. Measure 2 contains a dotted quarter note B4 and a half note C5. The notes in measure 2 are tied to the notes in measure 1.

(b) Rest(s)

Musical notation for question (b) showing rests in measures 4 and 5. The notation is in treble clef, 4/4 time, and E♭ major. Measure 4 contains a dotted quarter note G4 and a half note A4. Measure 5 contains a dotted quarter note B4 and a half note C5. Measures 6 and 7 contain eighth notes: G4, A4, B4, C5, B4, A4, G4.

Musical notation for question (b) showing notes in measures 6 and 7. The notation is in treble clef, 4/4 time, and E♭ major. Measure 6 contains eighth notes G4, A4, B4, C5. Measure 7 contains eighth notes B4, A4, G4.

(d) Notes

Musical notation for question (d) showing notes in measures 12, 13, 14, 15, and 16. The notation is in treble clef, 4/4 time, and E♭ major. Measure 12 contains a dotted quarter note G4 and a half note A4. Measure 13 contains a dotted quarter note B4 and a half note C5. Measure 14 contains a dotted quarter note D5 and a half note E5. Measure 15 contains a dotted quarter note F5 and a half note G5. Measure 16 contains a dotted quarter note A5 and a half note B5.

**Question 6**

In this question you are asked to comment on **two** excerpts of music.

- (a) Listen to each excerpt. For each excerpt identify at least **two prominent** concepts in each of the following categories:
- **Melody/harmony**
  - **Texture/structure/form/timbre/dynamics**

Both excerpts will be played twice, with a pause of 15 seconds between playings, and a pause of 4 minutes at the end for you to complete your final answer.

You may use the table on *Page 14* for rough working, but your final answer must be written on *Page 15*.

Your final answer could be bullet points or short answers identifying the concepts you have heard.

Here is Excerpt 1 for the first time.

Here is Excerpt 2 for the first time.

Here is Excerpt 1 for the second time.

Here is Excerpt 2 for the second time.

You now have 4 minutes to identify at least **four** concepts in each excerpt.

A warning tone will sound 30 seconds before the start of part (b).

## Question 6 (a) (continued)

## FINAL ANSWER

(i) Excerpt 1

2

In excerpt 1 it featured  
 an Alberti bass on piano  
 at the beginning as well as  
 an anacrusis, obbligato played  
 on piano throughout its concerto,  
 the violins played arco with  
 the flutes playing an inverted pedal.  
 On all instruments, staccato was played.  
 There were sequences, crescendo and  
 sforzando prominent throughout.

(ii) Excerpt 2

2

In the 2nd excerpt anaphoral was  
 played throughout with  
 descending scales present on  
 strings. The instruments  
 played in unison performing  
 a dements of pizzicato on  
 strings and ~~stacc~~ staccato on  
 woodwind and brass. The flutes  
 also had an inverted pedal.  
 The music was atonal and from  
 the Romantic period.

**Question 6 (continued)**

(b) This question has two parts.

(i) Analyse the two excerpts you have just heard.

In your extended answer you should refer to **six similarities/differences** across the following categories:

- Type of work
- Melody/harmony
- Texture/structure/form/timbre/dynamics

(ii) Conclude your analysis with a statement on the **style/period** of each excerpt and **justify** your answer.

You will hear each excerpt **two** more times, with a pause of 15 seconds between playings, and a further **10 minutes** to complete your answers for part (i) and part (ii).

**Rough work will not be marked.**

You should write your final answers on *Pages 18 and 19*.

Here is Excerpt 1 for the third time.

Here is Excerpt 2 for the third time.

Here is Excerpt 1 for the last time.

Here is Excerpt 2 for the last time.

You now have **10 minutes** to complete your analysis and conclusion.

A warning tone will sound 30 seconds before the end of the question paper.

## Question 6 (b) (continued)

## FINAL ANSWER

## (i) Analysis

Comment on six similarities/differences you hear in the excerpts. Your final answer should be a written description of what you have heard and not simply a list of similarities/differences.

4

In both concepts, strings<sup>①</sup> were present both playing arco, ~~and~~ pizzicato + staccato.<sup>②</sup> Sequences<sup>③</sup> were also present in both pieces with the upper woodwind/<sup>strings</sup> playing inverted pedals<sup>④</sup>. Also, both pieces are large scale orchestral<sup>⑤</sup> pieces, playing crescendos + sforzandos.

However, excerpt 2 was through composed <sup>while</sup> ~~with~~ excerpt 1 being strophic<sup>⑥</sup>. There was also a modulation from minor to major in excerpt 2 and not 1.<sup>⑦</sup> Excerpt 1 was also from the Classical era whereas excerpt 2 was from ROM.<sup>⑧</sup> Antiphonal was also present in excerpt 2 and not 1.<sup>⑨</sup>

## Question 6 (b) (continued)

## (ii) Conclusion

Write a statement on the style/period of each excerpt and justify your answer.

2

Excerpt 1 was from the  
classical period as it  
featured a <sup>prominent</sup> solo instrument, no  
percussion and solo.

Excerpt 2 was from ~~the~~  
20<sup>th</sup> century music as  
elements of percussion were  
present and it was highly  
chromatic and atonal.

[END OF QUESTION PAPER]